

The East Ender

Distributed to residents
of Waihi East

DECEMBER 2018

Latest News

Project Martha Hearings

Project Martha hearings were held between 12–20 November. There were five and a half days of hearings during which the commissioners heard from OceanaGold, Waikato Regional Council, Hauraki District Council, Ngati Hako, the Royal Forest and Bird Protection Society of New Zealand, Fish and Game New Zealand, New Zealand Transport Agency, Waihi Community Forum and others, including a number of local individuals. All this evidence is available on Hauraki District Council's website. In total, there were 240 submissions, with 80% in support, 14% in opposition and the remainder neutral or 'not stated'. The three commissioners asked questions of many of those who spoke. The commissioners will now review all the information presented to them before making their decision, possibly before Christmas.

Moresby Avenue office hours over the holiday period

Our Administration Office at Moresby Avenue will be closed at the end of the business day on Friday 21 December and will reopen on Wednesday 3 January 2019. The Community Engagement Line 0800 WAIHIGOLD will be available 24 hours a day throughout the holiday period.

January 2018 East Ender

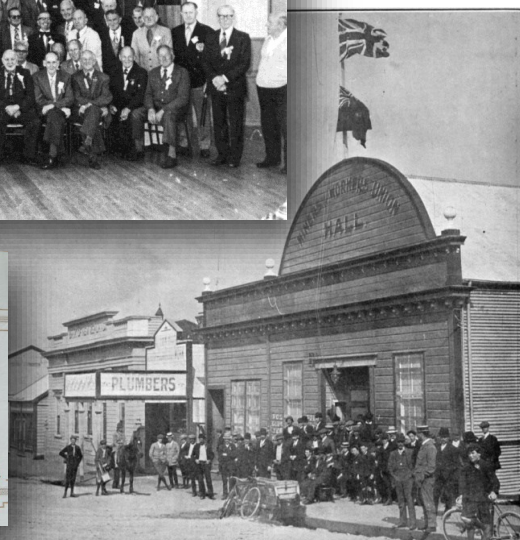
As the beginning of January is a statutory holiday, the January edition of the *East Ender* will be a few days later than usual.



Happy Birthday

This year is the sixtieth anniversary of the Waihi Memorial Hall being constructed. The site was given to the community by the Miners Union. Next time you walk past the hall, have a look at the plaques on either side of

the main doors. In reporting on the 1976 Miners' Reunion, the *Ohinemuri Journal* states: 'The Memorial Hall was free of charge for the Reunion. When the Miners Union ceased to exist in 1952 the residue of their funds was donated to the Memorial Hall Fund with the proviso that the Hall was to be rent-free for any official Miners gathering. This was the first time since 1952 that this proviso has needed to be honoured.' To the best of our knowledge, this is still the only time that a request for free use has been made for 'any official Miners gathering'.



Top: Underground staff from the pre 1952 Martha mine at the 1976 Miners Reunion.

Above right: The original Miners Hall. The library, which still stands in Seddon Street, can be seen in the centre of the picture.

Above left: The Memorial Hall birthday cake, cut at the Waihi Armistice 100 event.

Contact us:

Donna Fisher, Company Liaison Officer
0800 WAIHIGOLD (0800 924 444)


OCEANAGOLD
WAIHI OPERATION



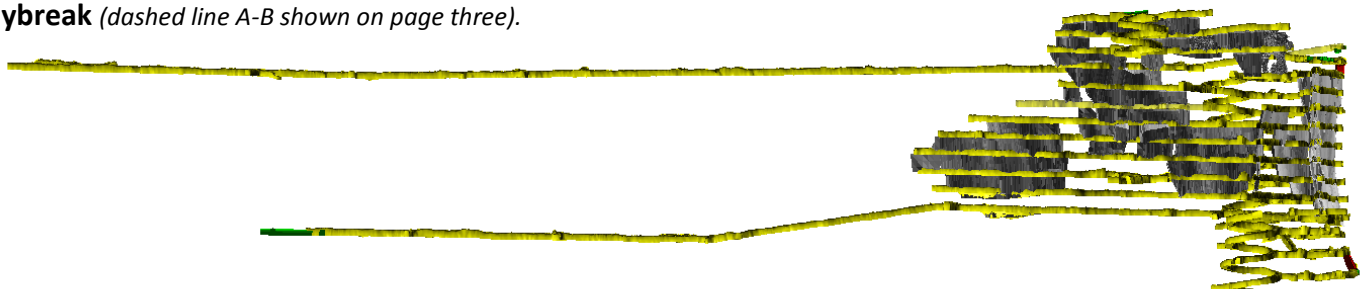


Pit Rim Walkway

As briefly mentioned in last month's *East Ender*, we have placed an exploration drill rig to the east of the Cornish Pumphouse slider beams. This rig will be in place for at least six months, and possibly up to a year. It is working to improve confidence in our Project Martha targets.

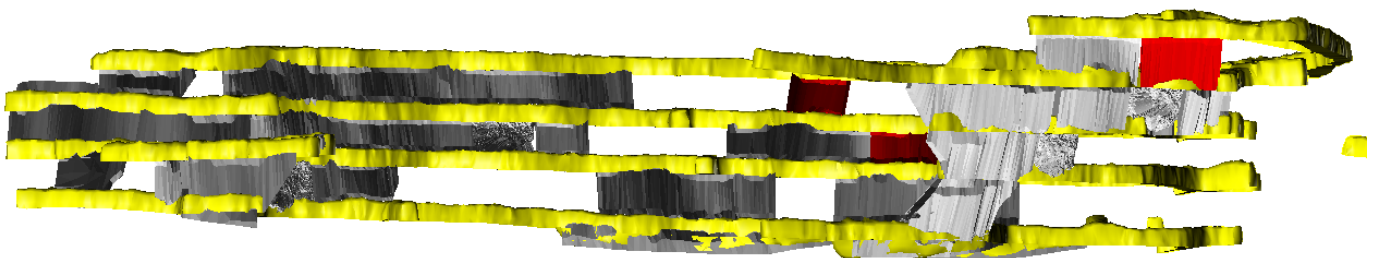
Public access to the Cornish Pumphouse and the Pit Rim Walkway will not be affected. Acoustic cladding has been placed around the drill rig. Should you wish, you will be able to view the rig in operation from the section of the Pit Rim Walkway seen at the right of the picture. We will also place an information panel in this area.

Daybreak (dashed line A-B shown on page three).

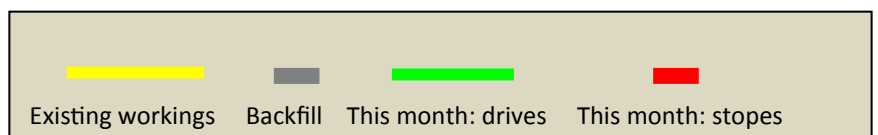


A ————— B

Empire (dashed line C-D shown on page three).



C ————— D



KEY

— Existing mining

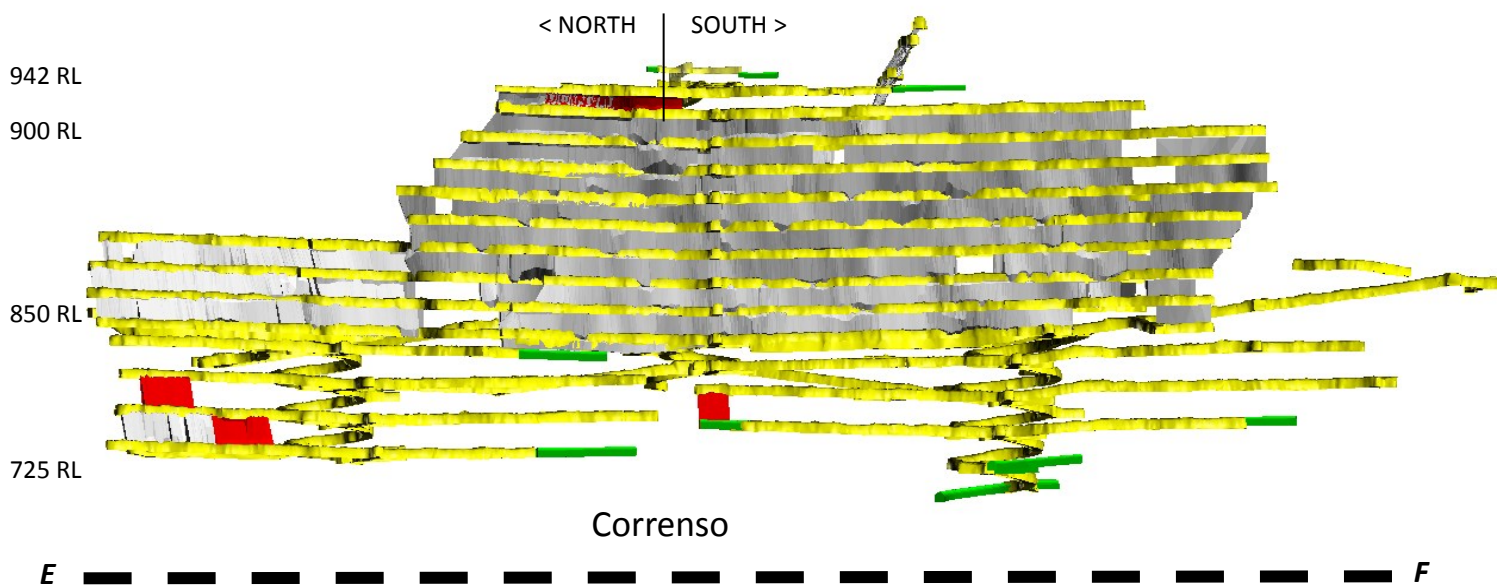
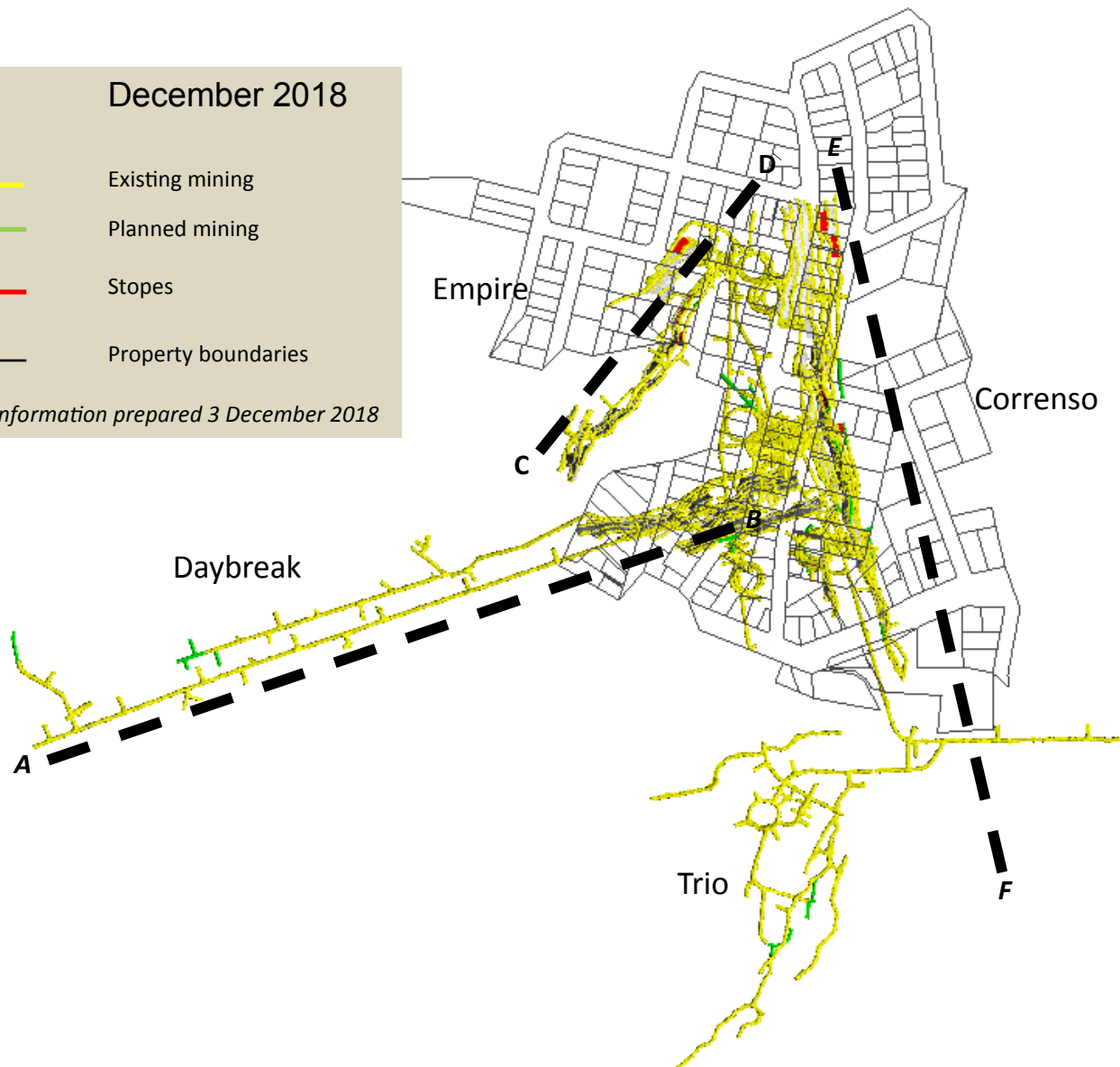
— Planned mining

— Stopes

— Property boundaries

This information prepared 3 December 2018

December 2018



The Favona portal on the surface is 1120 RL, so 942 RL is 178m below the portal and 725 RL is 395m below the portal.

— Existing workings

— Backfill

— This month: drives

— This month: stopes

DECEMBER 2018

CORRENSE NORTH

CORRENSE SOUTH

TRIO

GLADSTONE RD

MATAURA RD

BARRY RD

ROYCROFT ST

KENNY ST

SUPA
(DAYBREAK)

EMPIRE

DOBSON ST

CEPA & SUPA BOUNDARIES

Mine Development Plan

Published at the start of each month as required by Condition 22a of the Correnso Underground Conditions of Consent and Condition 14a of the Slevin Underground Conditions of Consent.



— CEPA Area
— SUPA Area

KEY

- Existing mining
- Planned mining
- Backfill
- Stopes

This information prepared 3 December 2018

0800 WAIHIGOLD (0800 924 444)

www.waihigold.co.nz