

Latest News

Project Martha Hearings

Project Martha hearings will be held in the week starting 12 November in the St James Presbyterian Church Hall on Moresby Avenue. These hearings are open to the public, although only those people who have put in a submission and indicated that they wish to be heard by the independent commissioners are allowed to speak.

Exploration drilling at Martha

We will shortly be placing an exploration drill rig at the eastern end of the Cornish Pumphouse viewing area. This drill rig will be in place for up to a year as it works to improve confidence in the Project Martha targets. Access to the Cornish Pumphouse and the Pit Rim Walkway will not be affected. You will be able to watch the rig in operation from the section of the Pit Rim Walkway next to the poppet head near Seddon Street.

Kauri Die Back Management

It has been announced that several bush tracks on the Coromandel will be closed to the public to combat Kauri Die Back. OceanaGold's exploration drilling activities are not affected by these closures. All equipment, staff and contractors are generally transported by helicopter. The Company has a Department of Conservation approved Kauri Dieback Management Plan that requires all staff and contractors to clean and disinfect their boots and all equipment prior to entering and leaving the bush.

WAIHI ARMISTICE 100



Students from Waihi East School learn about Armistice Day in the Memorial Hall last week.

100 years ago ...

One hundred years ago this month on the other side of the world the Armistice was signed to herald the end of the First World War. In Waihi, a number of events are being held over the three days 9-11 November to commemorate this event and to recognise those who served and those they left behind.

Young People's Day

Friday 9 November 1.00pm. Cornish Pumphouse

Join students from Waihi schools at the Cornish Pumphouse for the dedication of the Peace Wings, starting on the grassy slope next to the rangatira statue.

The wings have been created by students from Waihi College with help from students from Waihi Beach, Waihi Central, Waihi East, Waimata, Waikino and St Joseph's schools. This will be a special afternoon which will remember those who laid down their lives and how important it is to stand up for peace.

They Also Serve: Women in WW1

Saturday 10 November 1.00pm. Waihi Memorial Hall

Join in a special celebration and commemoration of the role of women in World War One; those who served overseas and those who served in so many ways at home. Waihi Ward Councillor Anne Marie Spicer will MC this event. Listen to stories from overseas and close to home. Hear the soldier's view of the women's story. The Tunnelling Company cloak designed and created by Krishna Buckman and the Waihi Embroidery and Quilters groups will be dedicated. This cloak will be worn the next day at the Armistice Centenary National Ceremony in Wellington.

Contact us:

Donna Fisher, Company Liaison Officer
0800 WAIHIGOLD (0800 924 444)

Lest We Forget

Sunday 11 November

Start at dawn and join in the whole day, or select from the day’s events and activities.

At 6.00am three pipers will play at the Tunnellers’ Memorial at Gilmour Reserve. You will have time for breakfast before the Peace Train leaves from the Waihi Station at 8.15am, returning to Waihi in time for morning tea at the Waihi RSA at 9.30am. There will be a church service at the RSA run by Waihi Salvation Army at 10.30am. At 11 o’clock—the eleventh hour of the eleventh day of the eleventh month—the church bell will toll eleven times. This will be followed by two minutes’ silence, and a Waihi Memorial RSA service. NZDF will be represented by two members of the RNZAF who will be with us for the day.

Groups and organisations around the country are being encouraged to join in the nation-wide ‘Roaring Chorus’. Our ‘Roaring Chorus’ will take place as we parade to the Waihi Memorial Hall.

The events in the hall start at midday. They include the reading of a Roll of Honour, an address by Dame Margaret Bazley, and the sharing of community stories. The Waihi Lions Club will present named poppies to descendants of those whose names are on the Poppy Fence. This will be followed by recognition that this is also the 60th birthday of the Waihi Memorial Hall. To close, light refreshments will be provided by Waihi Lions Club.

WAIHI ARMISTICE 100

LOCAL SPONSORS & PARTNERS


INNOVATION, PERFORMANCE & GROWTH






WAIHI VOLUNTEER FIRE BRIGADE


Waihi Floral Art Club


café • bakery • catering





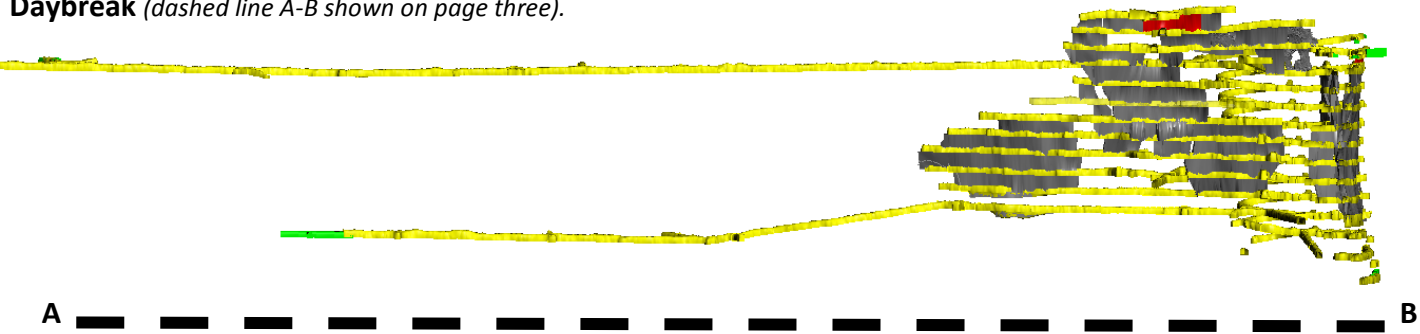



WAIHI • WAIKINO

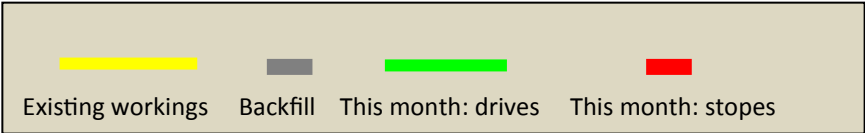
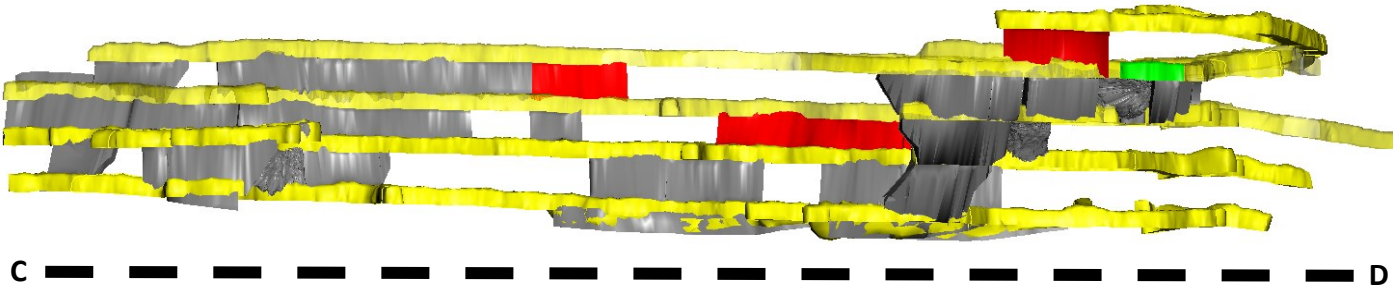


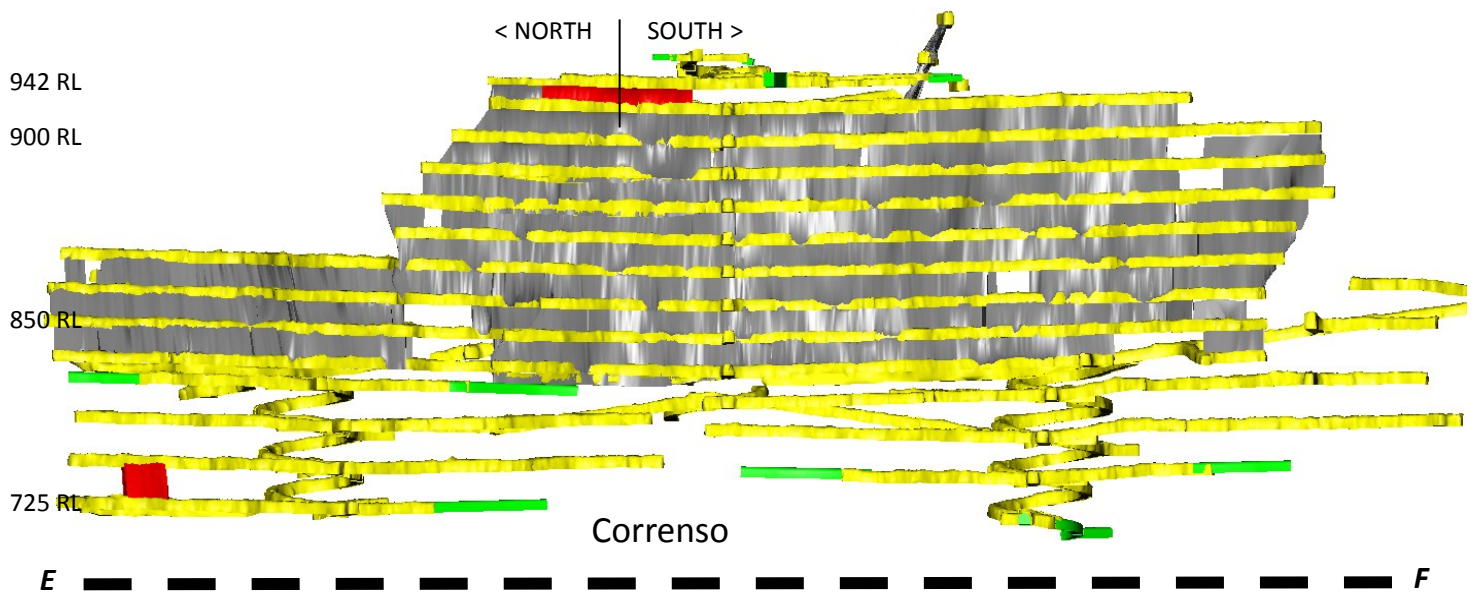
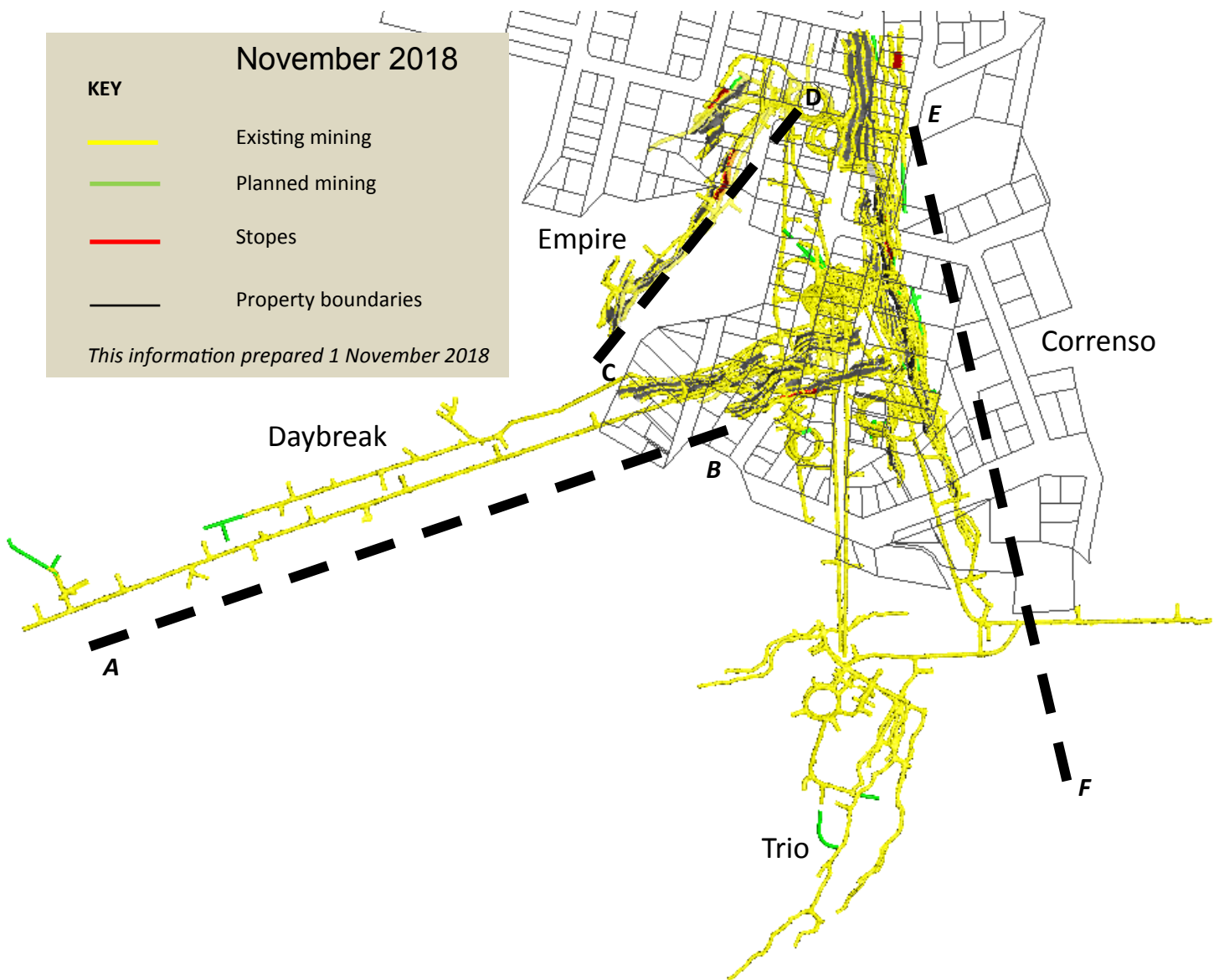


Daybreak (dashed line A-B shown on page three).



Empire (dashed line C-D shown on page three).





The Favona portal on the surface is 1120 RL,
so 942 RL is 178m below the portal and 725 RL
is 395m below the portal.

Existing workings

Backfill

This month: drives

This month: stopes

NOVEMBER 2018

CORRENZO NORTH

CORRENZO SOUTH

TRIO

GLADSTONE RD

MATAURA RD

BARRY RD

ROYCROFT ST

KENNY ST

EMPIRE

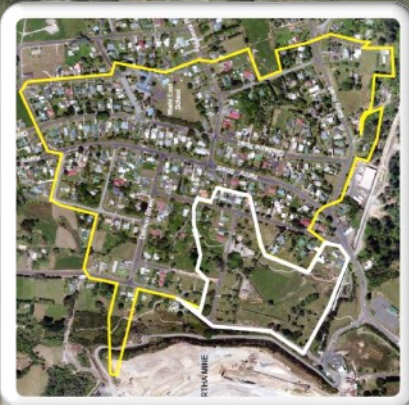
SUPA
(DAYBREAK)

DOBSON ST

CEPA & SUPA BOUNDARIES

Mine Development Plan

Published at the start of each month as required by Condition 22a of the Correnso Underground Conditions of Consent and Condition 14a of the Slevin Underground Conditions of Consent.



— CEPA Area
— SUPA Area

KEY

- Existing mining
- Planned mining
- Backfill
- Stopes

This information prepared 1 November 2018

0800 WAIHIGOLD (0800 924 444)

www.waihigold.co.nz