

## Latest News

### Pit Rim Walkway

Over the next few weeks we will be spreading new gravel on the Pit Rim Walkway. The work will be done in sections and as the weather allows, so different sections of the track will be closed for short periods of time. There will be signs advising of the temporary closure of each section. Take care if you are running or cycling on the new gravel. Sometimes the surface can take a while to 'bed in'.

### Project Martha



Submissions for Project Martha close at 4.30pm on Friday 14 September. The Assessment of Environmental Effects (AEE) and the many volumes of technical reports are now available on our website [www.waihigold.co.nz](http://www.waihigold.co.nz). If you would like assistance with completing your submission, members of Waihi Community Forum are available to help.

### Correnso Community Meeting

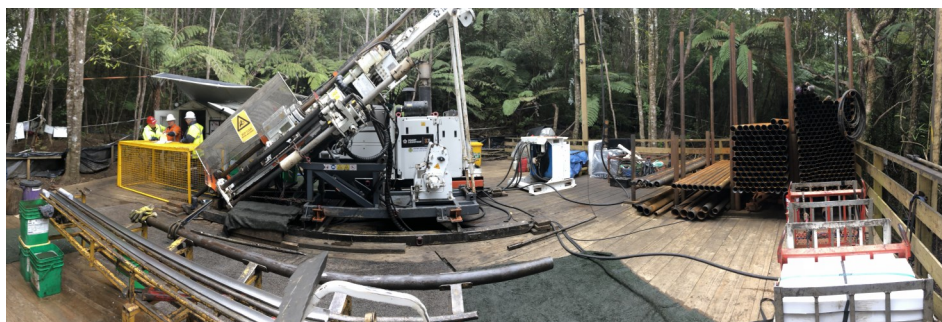
The next Correnso Community Meeting will be held on Thursday 20 September at 4.00pm at the Education Centre, corner of Moresby Avenue and Savage Road. An agenda will be distributed next week.

### Exploration and Archey's frog

Recently there have been media reports about Archey's frog, a small native frog, currently reported only on the Coromandel Peninsula and one other small area.

It has been suggested by some parties that we are endangering the frogs or damaging their habitat.

Before we are allowed to carry out exploration in any Department of Conservation land we have to obtain approval from DoC. If granted, we are given an Access Arrangement (AA) which sets out our operating requirements, including a Kauri Dieback Management Plan and a Wildlife Act Authority.



*Above: Exploration drill rigs are placed on wooden platforms less than one third of a basketball court in size to reduce the impact of the activity. When the platform is removed the area is restored.*

We have been conducting exploration activities in the area for over 10 years. In that time, we have occupied 0.001% of DoC land on the Coromandel. We have moved one frog, as provided by our Access Arrangement. Ecological surveys conducted by independent specialists have found many more frogs. We have had over 40 potential drill sites disqualified, as each has had at least five frogs in an area one third the size of a basketball court. It is possible there are many more frogs at each potential site, but as each is discounted once five have been observed, this information has not been collected. We are currently investigating the possibility of funding a comprehensive survey.

If the independent surveys show that four or less native frogs are found on a plot, the frog locations are marked and recorded with biodegradable flagging tape and GPS. The site may be used provided a six metre buffer zone is possible with each frog location while also ensuring that the buffer connects with habitat outside the plot.

*Continued on Page Two*

### Contact us:

Donna Fisher, Company Liaison Officer  
0800 WAIHIGOLD (0800 924 444)



From Page One

Exploration and Archey's frog, continued

If we are able to fit a drill site within the remaining area we proceed by first installing a sheer polythene fence to prevent frogs entering the site and then clearing the site to set up. If not, we look at alternative sites and then go through the same survey process again. When we leave the site, the area is restored.

OceanaGold is targeting high value deposits capable of being mined by underground methods. This means that if a mineable deposit was located it could be accessed from outside Conservation land with only vent shafts visible on the surface. If we mine, Archey's frog will be safe.

Phone survey

You may get a phone call on your landline or mobile phone from a survey company asking for your opinion on a number of issues relating to mining. This annual survey is part of the data gathered for the Social Impact Management Plan (SIMP) and is commissioned by OceanaGold as part of the Correnso consent conditions. We welcome your feedback and encourage you to participate. This year more mobile phone numbers are being called than landlines as mobiles become more popular and landline use is dropping. How do survey companies get your mobile number? Apparently, they have a 'reverse phonebook' which lists numbers and the area in which the owner lives.

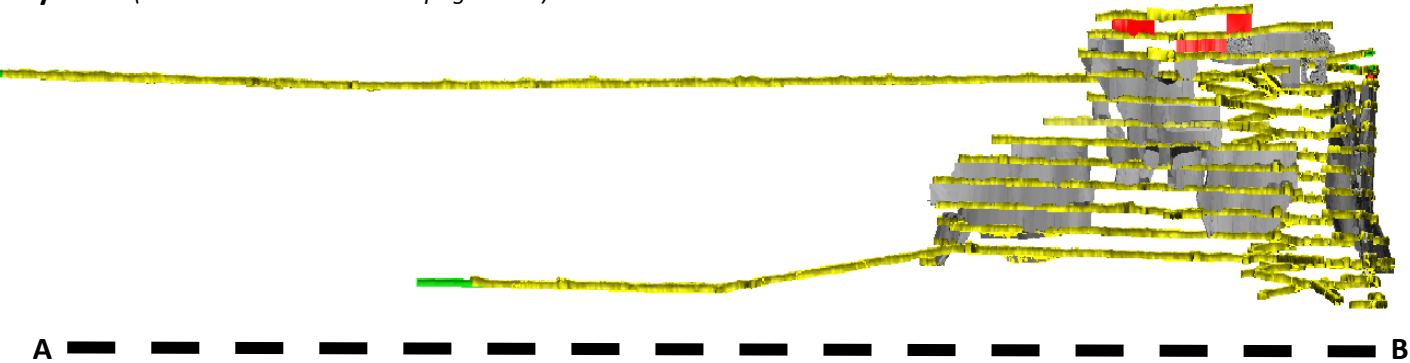
**CORRENZO COMMUNITY MEETING**

**4.00PM THURSDAY 20 SEPTEMBER**

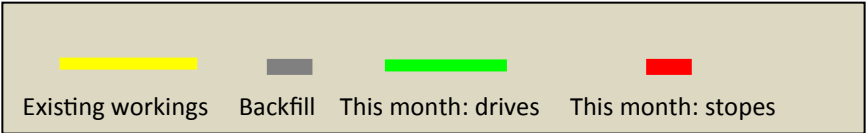
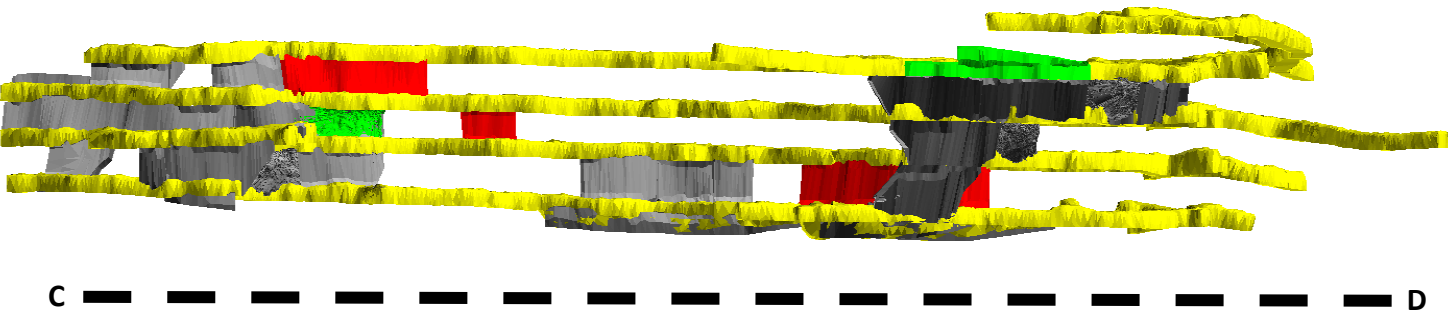
**OCEANAGOLD EDUCATION CENTRE**

**CNR MORESBY AVE & SAVAGE RD**

Daybreak (dashed line A-B shown on page three).



Empire (dashed line C-D shown on page three).



KEY

Existing mining

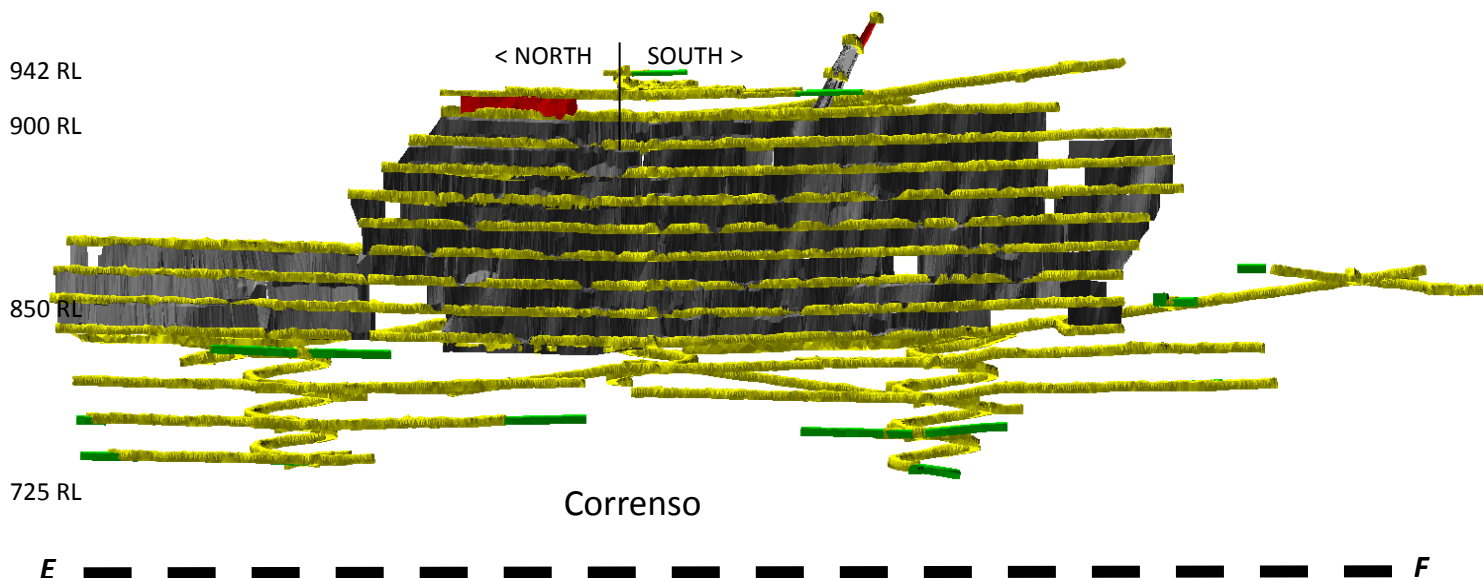
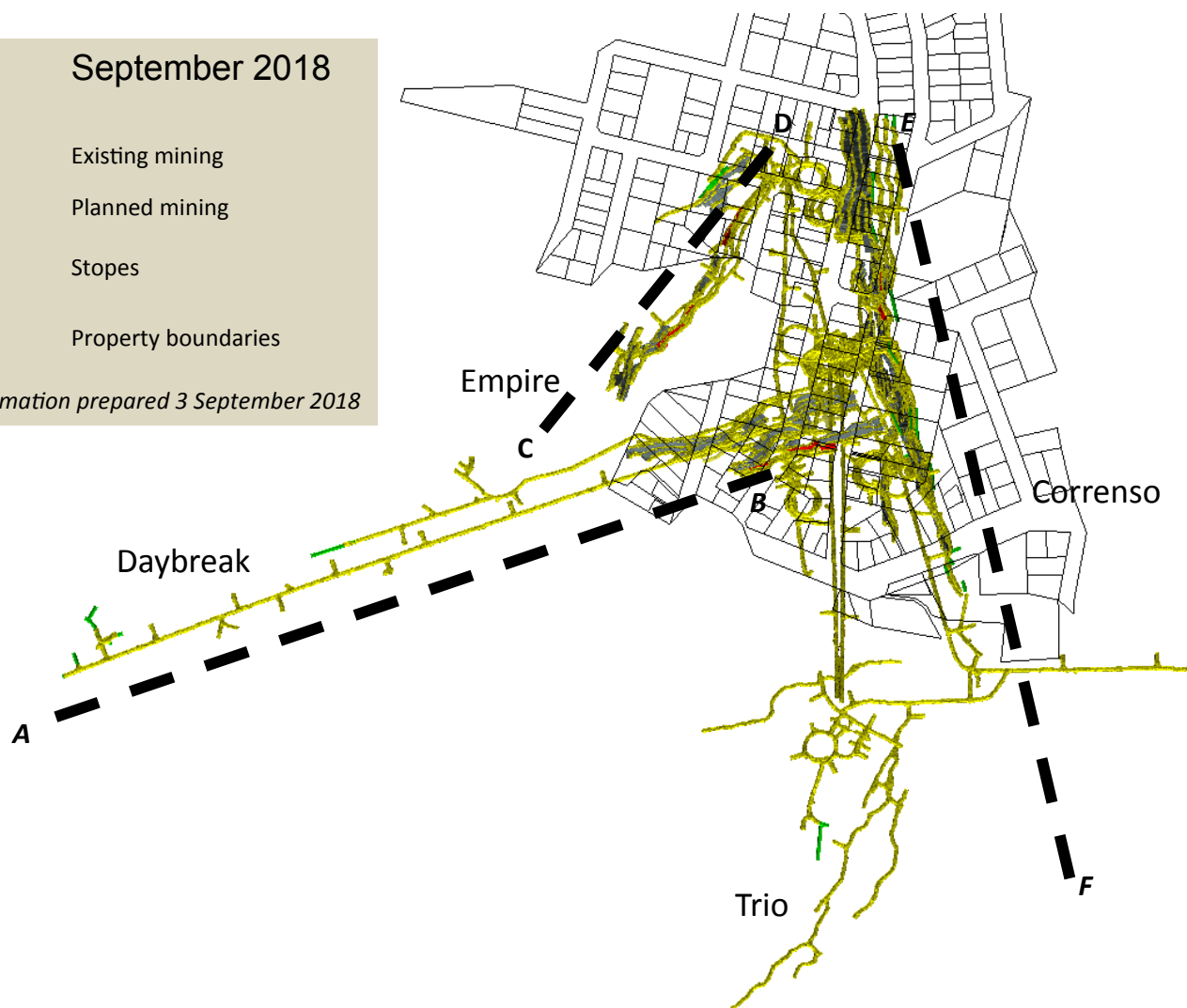
Planned mining

Stopes

Property boundaries

September 2018

*This information prepared 3 September 2018*



The Favona portal on the surface is 1120 RL,  
so 942 RL is 178m below the portal and 725 RL  
is 395m below the portal.

Existing workings

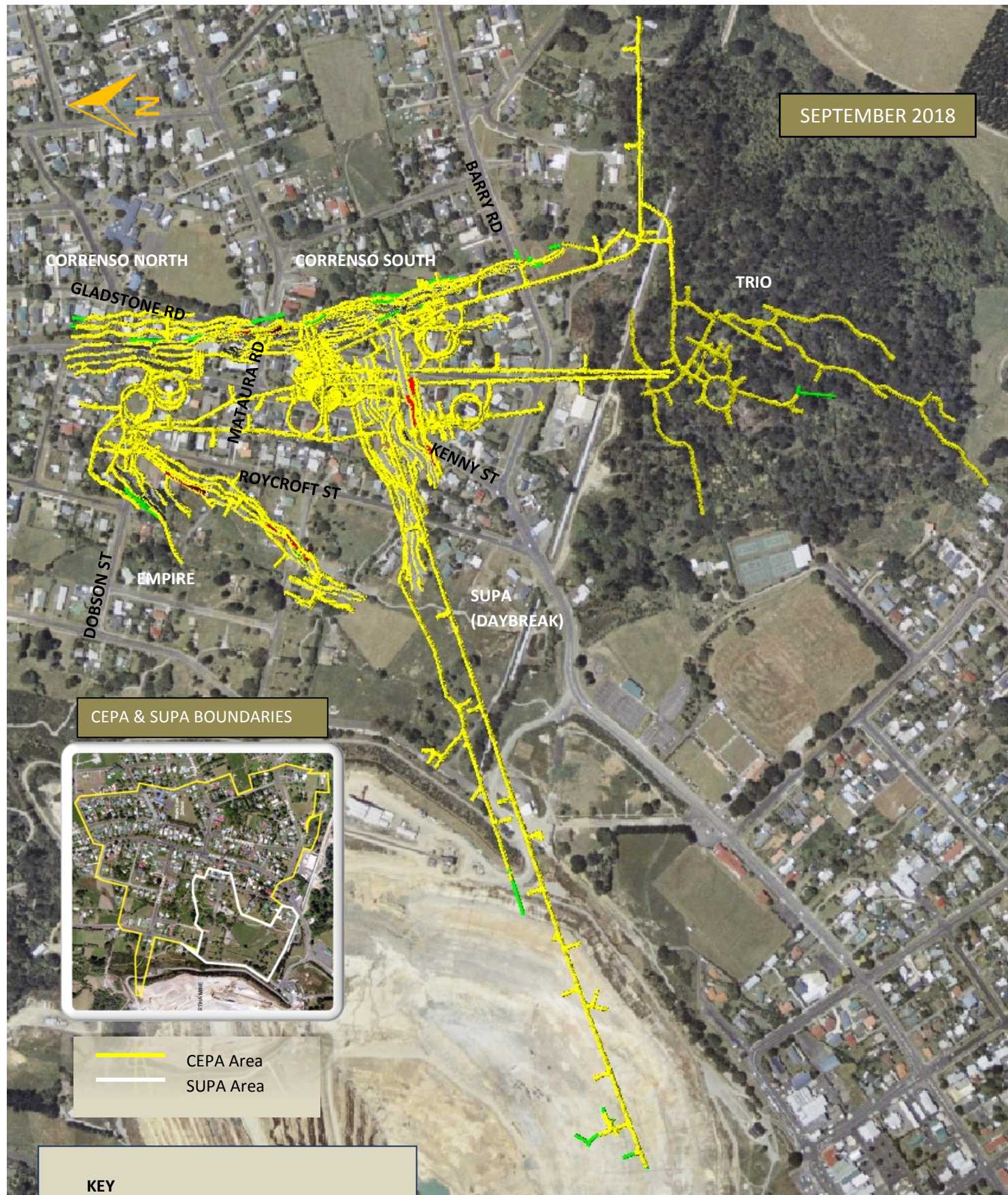
Backfill

This month: drives

This month: stopes



SEPTEMBER 2018



## Mine Development Plan

Published at the start of each month as required by Condition 22a of the Correnso Underground Conditions of Consent and Condition 14a of the Slevin Underground Conditions of Consent.

0800 WAIHIGOLD (0800 924 444)

[www.waihigold.co.nz](http://www.waihigold.co.nz)



This information prepared 3 September 2018