

The East Ender

Distributed to residents
of Waihi East

AUGUST 2018

Latest News

AEP | Letters advising residents about AEP payments for the first half of 2018 should arrive in mailboxes soon. This will be followed by cheques in the next couple of weeks. As we mine in different areas of Correnso/SUPA and at different depths, AEP payments vary between each six month period. Some residents who received a four-figure payment last time may receive less this time, and vice versa. An explanation of AEP can be found on our website. www.waihigold.co.nz/community/amenity-effect-programme

Project Martha | We expect that Hauraki District Council will publicly announce Project Martha in the next week or so. This will be followed by a submission period. We understand that Council will be distributing information widely.

As reported in last month's *East Ender*, the Assessment of Environmental Effects (AEE) and the many volumes of technical reports are now available on our website www.waihigold.co.nz

If you would prefer to read print versions of any of these reports we can provide a loan copy. We won't print copies until we know they are needed, so you will need to contact us on 0800 WAIHIGOLD (0800 92 44 44) and request specific volumes.

Correnso Community Meeting

The next Correnso Community Meeting will be held in September. The suggested date is Thursday 20th at 4.00pm at the Education Centre, corner of Moresby Avenue and Savage Road. This will be confirmed in the September *East Ender*.

Below: Staff swimming in one of the discharge ponds during the recent Walrus Swim.



How's the water?

We often get asked about water treatment on site. With the high rainfall we have in Waihi, how do you deal with all the water on site? Is the water you put in the river clean? What happens in a storm?

The answers to all of these questions can be found on our website. We also dealt with the issue of storm events in the May issue of the *East Ender*.

How clean is the water we discharge from site into the Ohinemuri River? It has to meet all of the requirements of the consent conditions. The water we put into the river, the river water itself, and the creatures which live in it, are regularly monitored.

But perhaps the best answer is the pictures above. We swim in the water that we release into the river. Each year in the middle of winter we hold a Walrus Swim. Staff brave or silly enough to face the cold race down the length of one of the discharge ponds. Apparently this year it was 'quite warm'. The ponds are the last place mine water reports to before being released into the Ohinemuri River.



Left: Monitoring the health of 'In stream fauna' in the Ohinemuri River.

Contact us:

Donna Fisher, Company Liaison Officer
0800 WAIHIGOLD (0800 924 444)


OCEANA GOLD
WAIHI OPERATION

What are we doing about Kauri Dieback?

By now we have all heard about Kauri Dieback and what we can do to slow, or hopefully even stop, its spread through the bush. Kauri Dieback is threatening kauri trees with extinction. The disease can be spread by minute particles of soil, which is why it is important that anybody who visits the bush thoroughly cleans their footwear and gear every time they enter or leave a bush or forest area. The pathogen can remain inactive but viable on footwear and equipment for up to six years. In its active stage it can sense the roots of a kauri tree and ‘swim’ towards it through the soil. Thorough cleaning or disinfecting of footwear is a must.

Already some tracks have been closed to the public, and the Department of Conservation is considering closing some tracks on the Coromandel Peninsula.

We have staff and contractors working bush areas on the peninsula. Our staff disinfect their equipment and boots each time they enter or exit the bush, as well as while they are on site and moving from one area to another. Any equipment we use, including that flown in by helicopter is also disinfected.

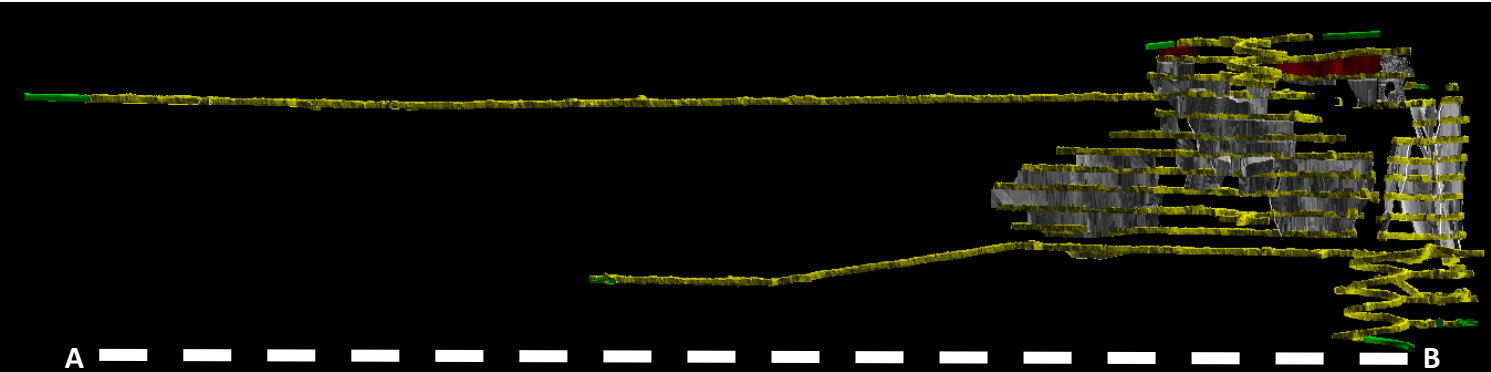
You can help in the fight against Kauri Dieback.

Find out what you can do here: www.kauridieback.co.nz

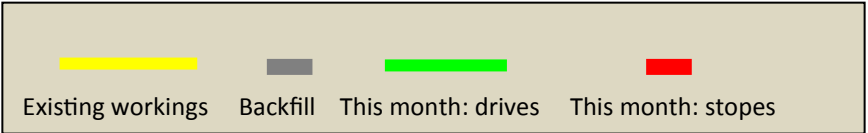
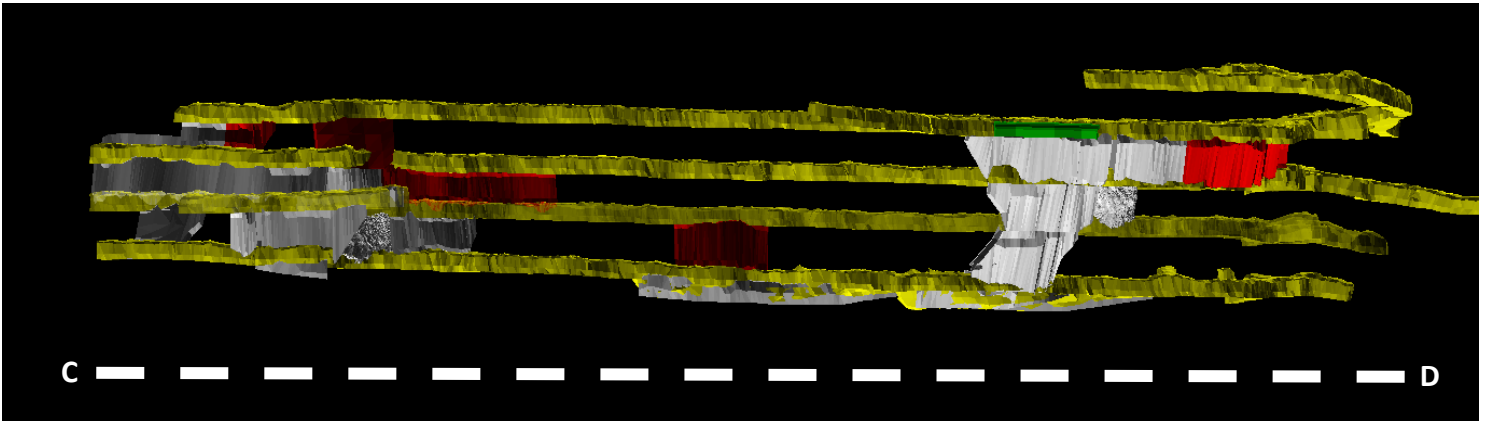
Right: All OceanaGold staff, contractors and visitors who go into the bush—including those who travel by helicopter—are required to disinfect their footwear and equipment before entering and upon leaving.

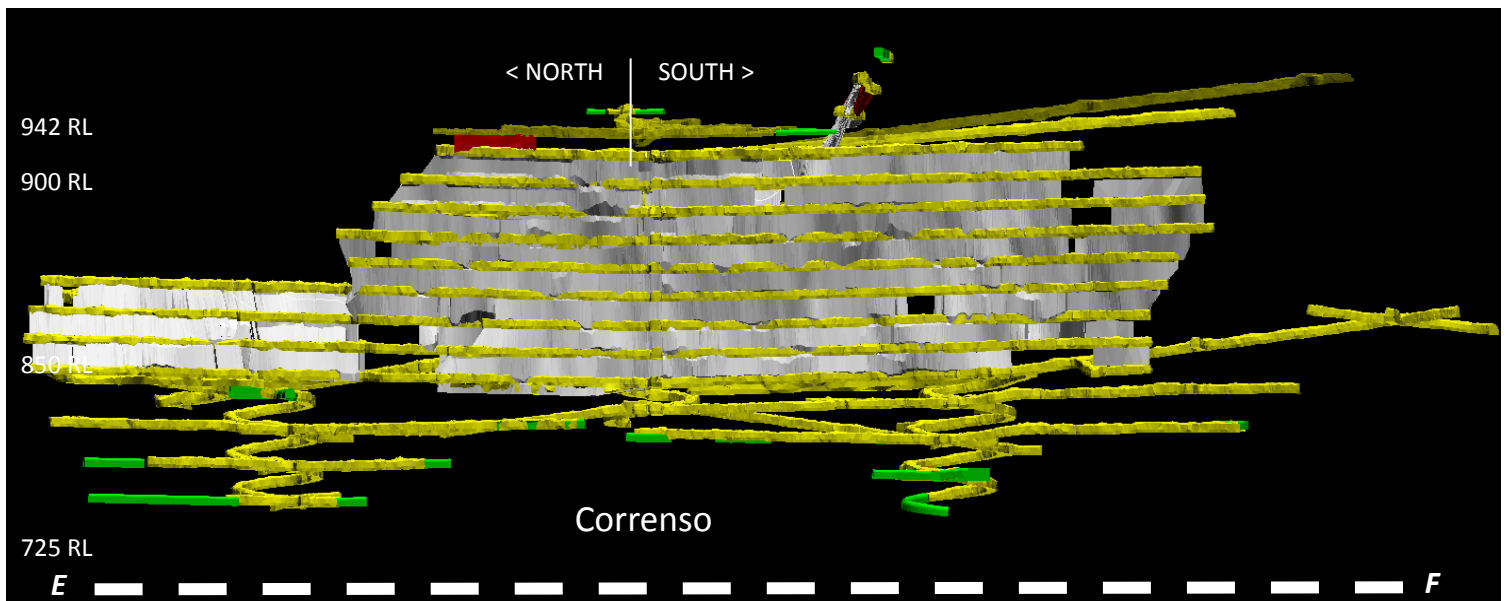
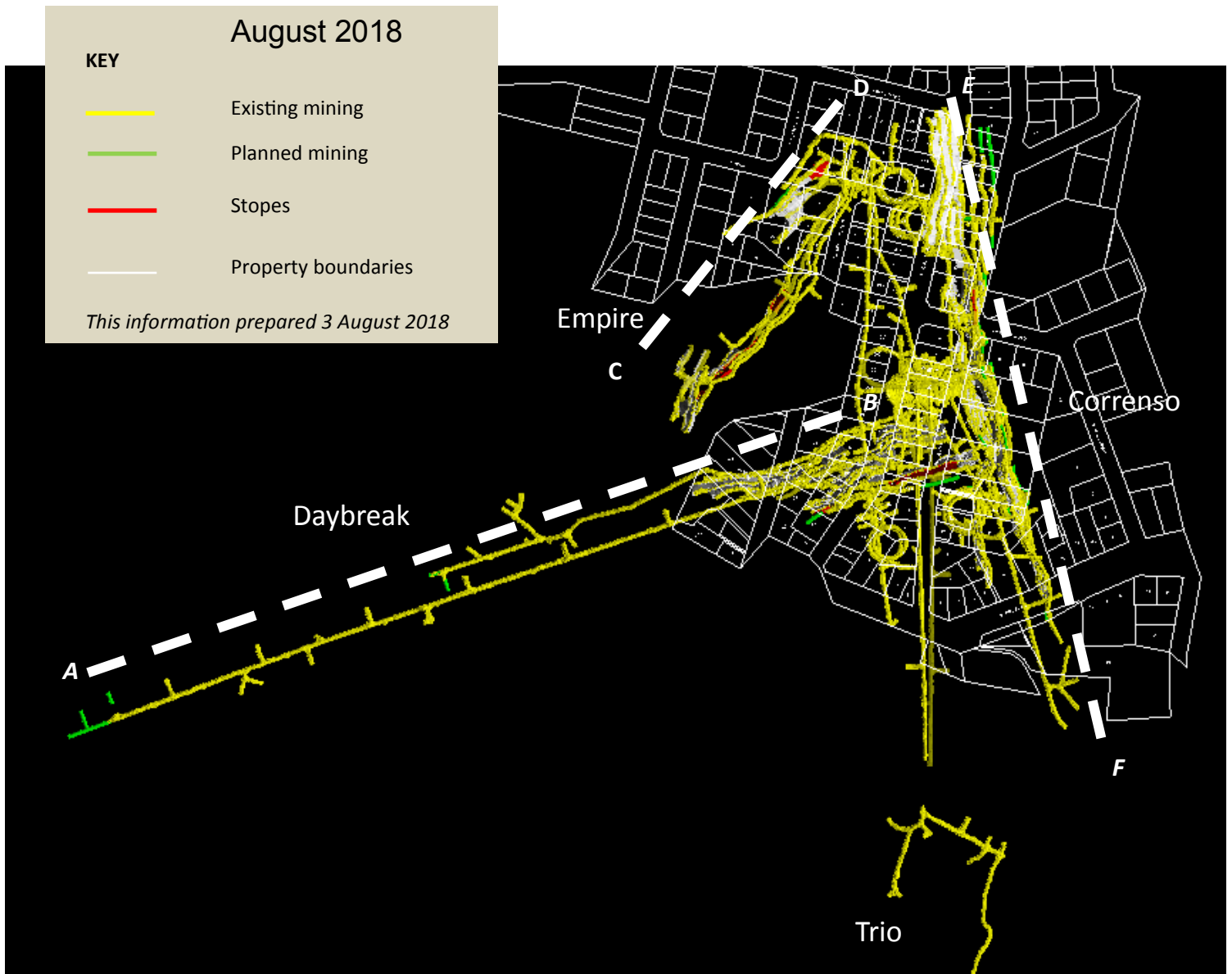


Daybreak (dashed line A-B shown on page three).

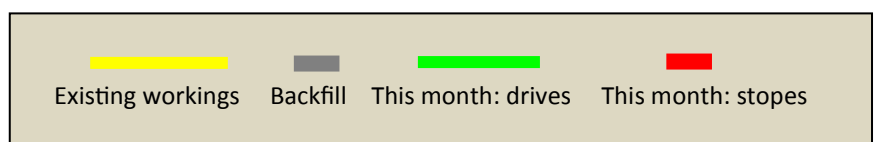


Empire (dashed line C-D shown on page three).





The Favona portal on the surface is 1120 RL,
so 942 RL is 178m below the portal and 725 RL
is 395m below the portal.





AUGUST 2018

CORRENTO NORTH

CORRENTO SOUTH

TRIO

GLADSTONE RD

BARRY RD

MATAURA RD

ROYCROFT ST

KENNY ST

DOBSON ST

EMPIRE

SUPA
(DAYBREAK)

CEPA & SUPA BOUNDARIES



— CEPA Area
— SUPA Area

KEY

- Existing mining
- Planned mining
- Backfill
- Stopes

This information prepared 3 August 2018

Mine Development Plan

Published at the start of each month as required by Condition 22a of the Correnso Underground Conditions of Consent and Condition 14a of the Slevin Underground Conditions of Consent.

0800 WAIHIGOLD (0800 924 444)

www.waihigold.co.nz

