

The East Ender

Distributed to residents
of Waihi East

JULY 2018

Latest News

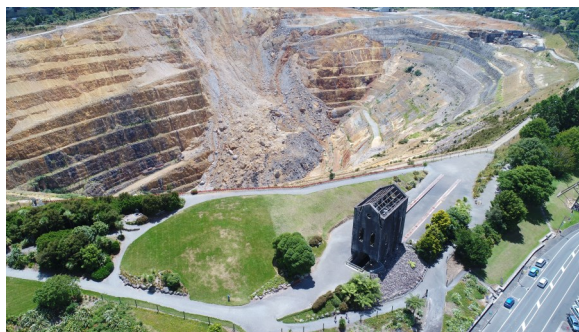


AEP

With the end of June comes the end of the first half of the year. AEP payments will be calculated soon. By the end of July those residents eligible for AEP will receive a letter, and after that cheques will be delivered by hand. If you do not receive a letter by the end of July this means that you are not eligible for AEP this round.

We use BlastHub monitoring results to model the vibration effects that may be experienced at various locations and to calculate payments.

Each six-month period, detailed vibration reports for the locations are exported from BlastHub. The data are filtered to identify the qualifying properties. A qualifying property is one that registered two or more blast events in any month that resulted in a vibration level of 1.5mm/s or more during the reporting period.



Project Martha will address the issues created by the slip on the North Wall and allow the company to access the ore in the pit. We will also mine under the pit floor into area previously worked by miners up to 1952.

Project Martha

After announcing Project Martha to the community in late March, OceanaGold recently submitted the application for this project to Hauraki District Council. You may have seen this reported in a recent edition of the *Waihi Leader*. The Assessment of Environmental Effects (AEE) and the many volumes of technical reports are now available on our website www.waihigold.co.nz

If you would prefer to read print versions of any of these reports we can provide a loan copy. We won't print any copies until we know they are needed, so you will need to contact us on 0800 WAIHIGOLD (0800 92 44 44) and request specific volumes.

Project Martha AEE Final

- A. Legal Description of Properties Supporting Project Martha*
- B. Economics Assessment-RevA_Sense*
- C. Existing Resource Consents Waikato Regional Council*
- D. Visual and Landscape_Boffa Miskell*
- E. Traffic Assessment_Traffic Design*
- F. Noise Assessment_Hegley Acoustics*
- G1. Vibration Assessment with plates and appendices_Heilig*
- G2. Vibration Volume 2_Heilig*
- H. Groundwater Assessment_GWS*
- I. Water Management-RevA_GHD*
- J. Freshwater Ecology Boffa Miskell*
- K1. Heritage Assessment Part 1_RevA_Clough and Associates*
- K2. Heritage Assessment Part 2_RevA_Clough and Associates*
- L. Air Quality Assessment-RevA_BECA*
- M. Geotechnical Underground-RevA_AMC*
- N. Subdivision Plan for Bulltown – Cambridge Roads*
- O. Proposed Land Use Consent Conditions*
- P. Pit Stability Assessment from the Martha Underground Mine_PSM*
- Q1. Pit Stability Assessment for the Phase 4 Cutback, Report and Figures-RevA_PSM*
- Q2. Pit Stability Assessment for the Phase 4 Cutback, Appendices-RevA_PSM*
- R. Ground Settlement Assessment_Engineering Geology Ltd*
- S. Geochemical Assessment_AECOM*
- T. Hydrodynamic Assessment of Pit Lake_Hydr numerics*
- U. Martha Pit Lake Management Strategy-RevA_AECOM*
- V. Pit Lake Limnology Assessment_Hydr numerics*

Contact us:

Donna Fisher, Company Liaison Officer
0800 WAIHIGOLD (0800 924 444)





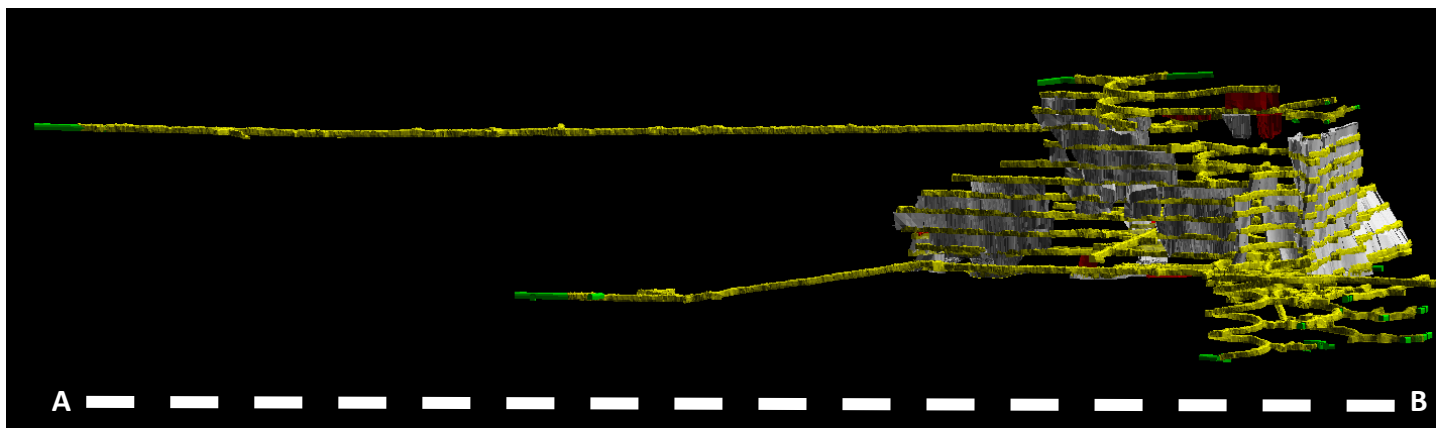
The Waihi Armistice Knitting Army (WAKA) is busy knitting and crocheting poppies in preparation for the centennial of Armistice Commemorations on 11 November this year. They need 2,500 poppies to dress the Waihi Memorial Hall. You may have seen them on Seddon Street on a recent weekend, busily knitting in the winter sun. At OceanaGold we admit we aren't very good at knitting, but we were pleased to be able to offer the group the use of one of our rooms on the rare occasion that it wasn't being used. Like to help? Got some spare wool? Find out more on the Armistice Waihi Facebook page: www.facebook.com/ArmisticeWaihi/

Above: Members of Waihi College Memphis Room dropped in to help the WAKA towards their goal of 2,500 knitted or crocheted poppies.

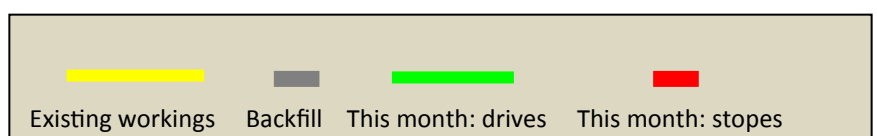
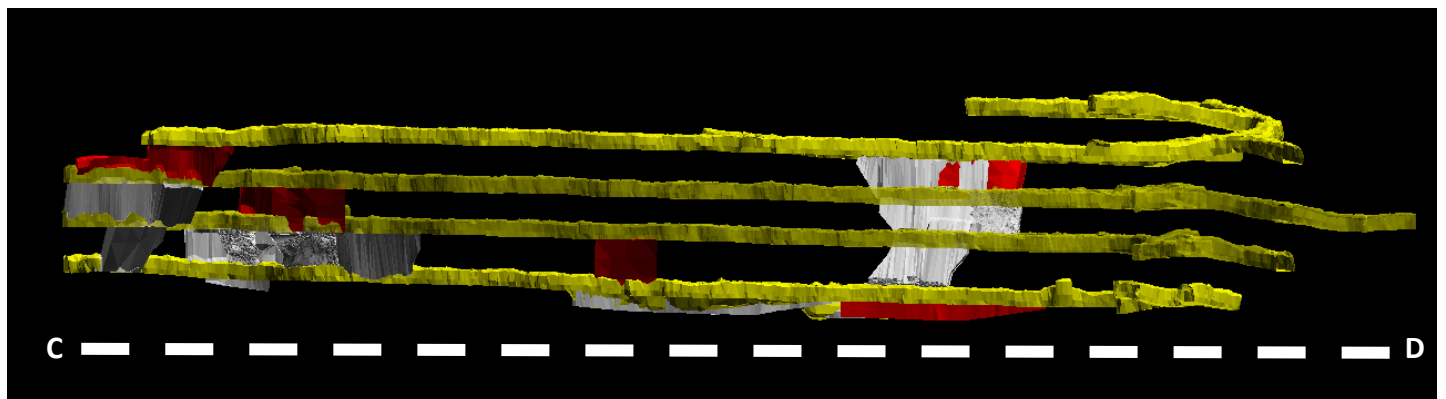
Right: The Waihi Armistice Knitting Army on the street outside Banana Pepper. Great conversation, great coffee, and lots of knitting.

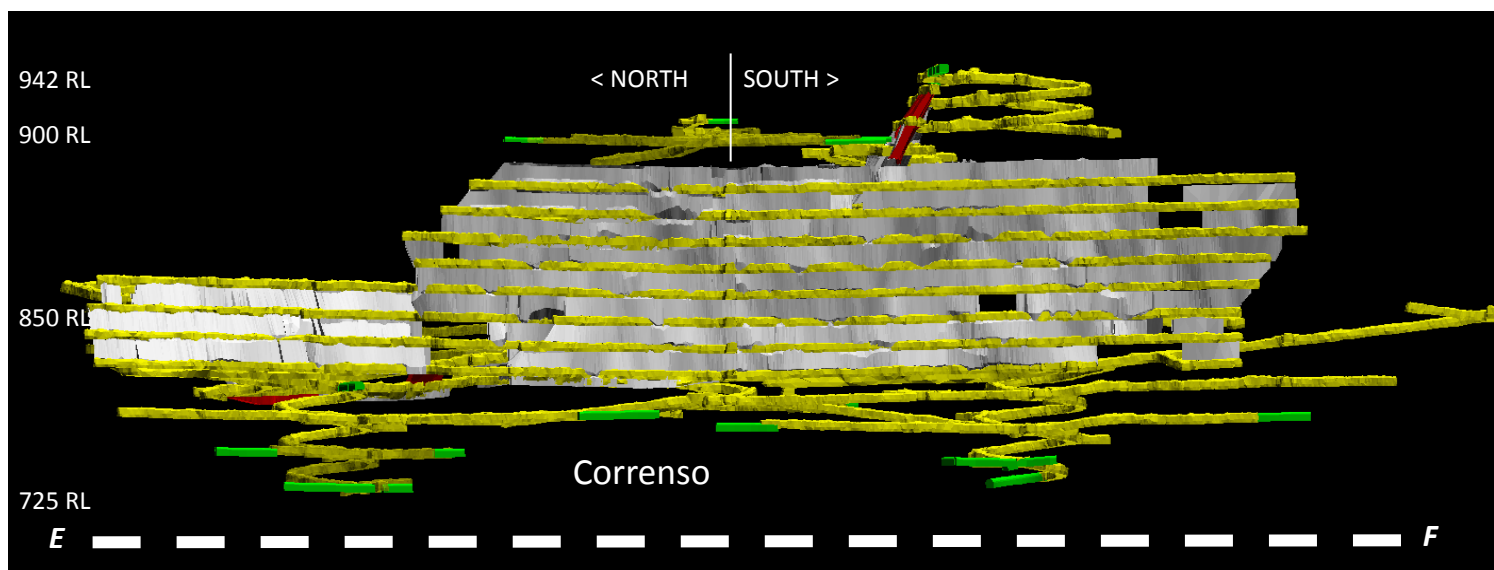
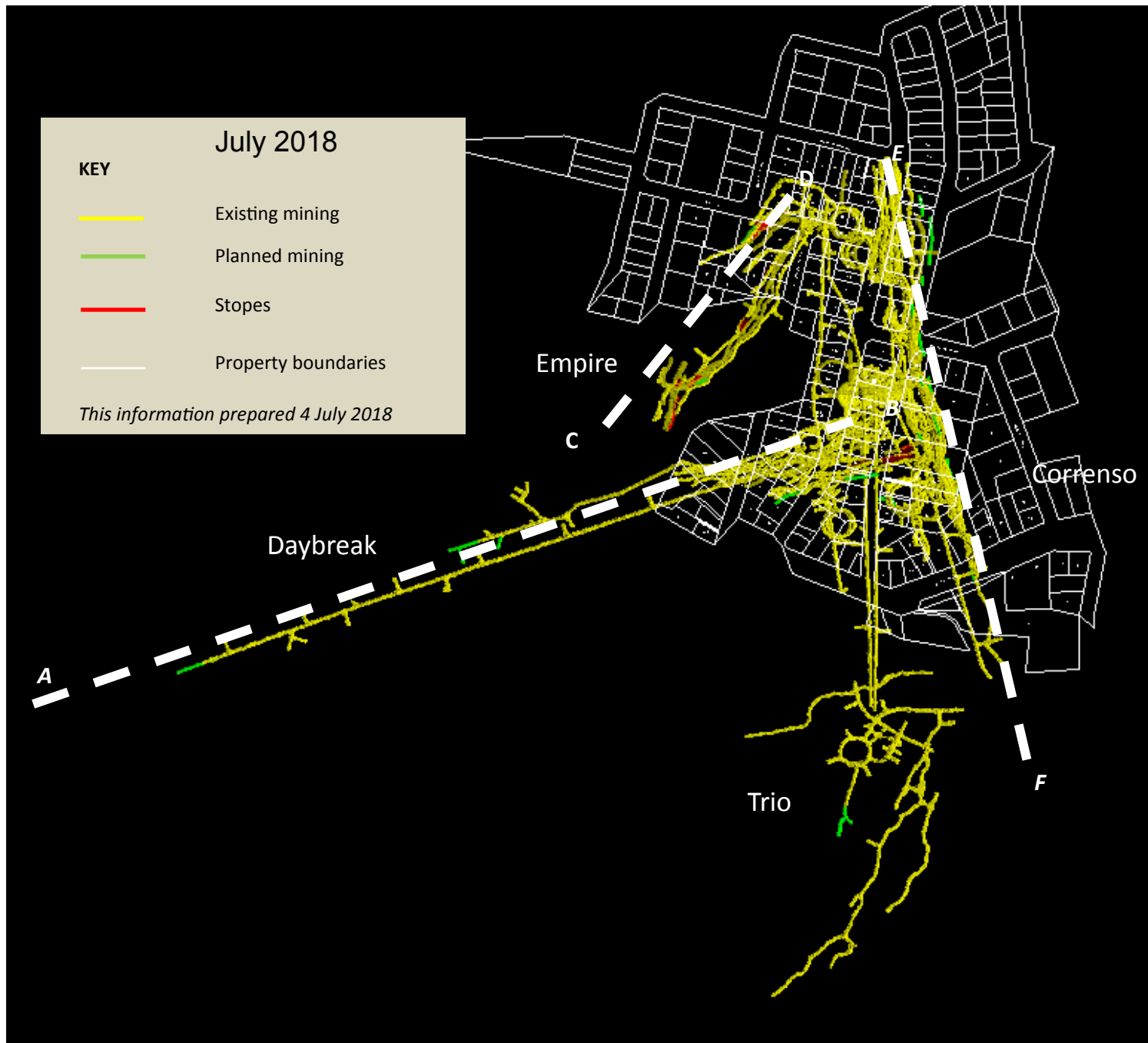


Daybreak (dashed line A-B shown on page three).

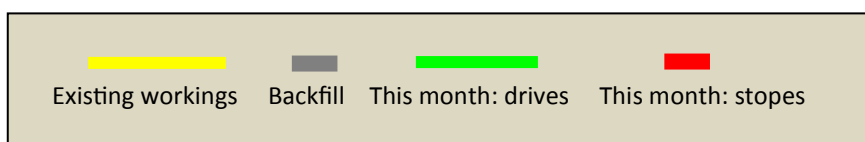


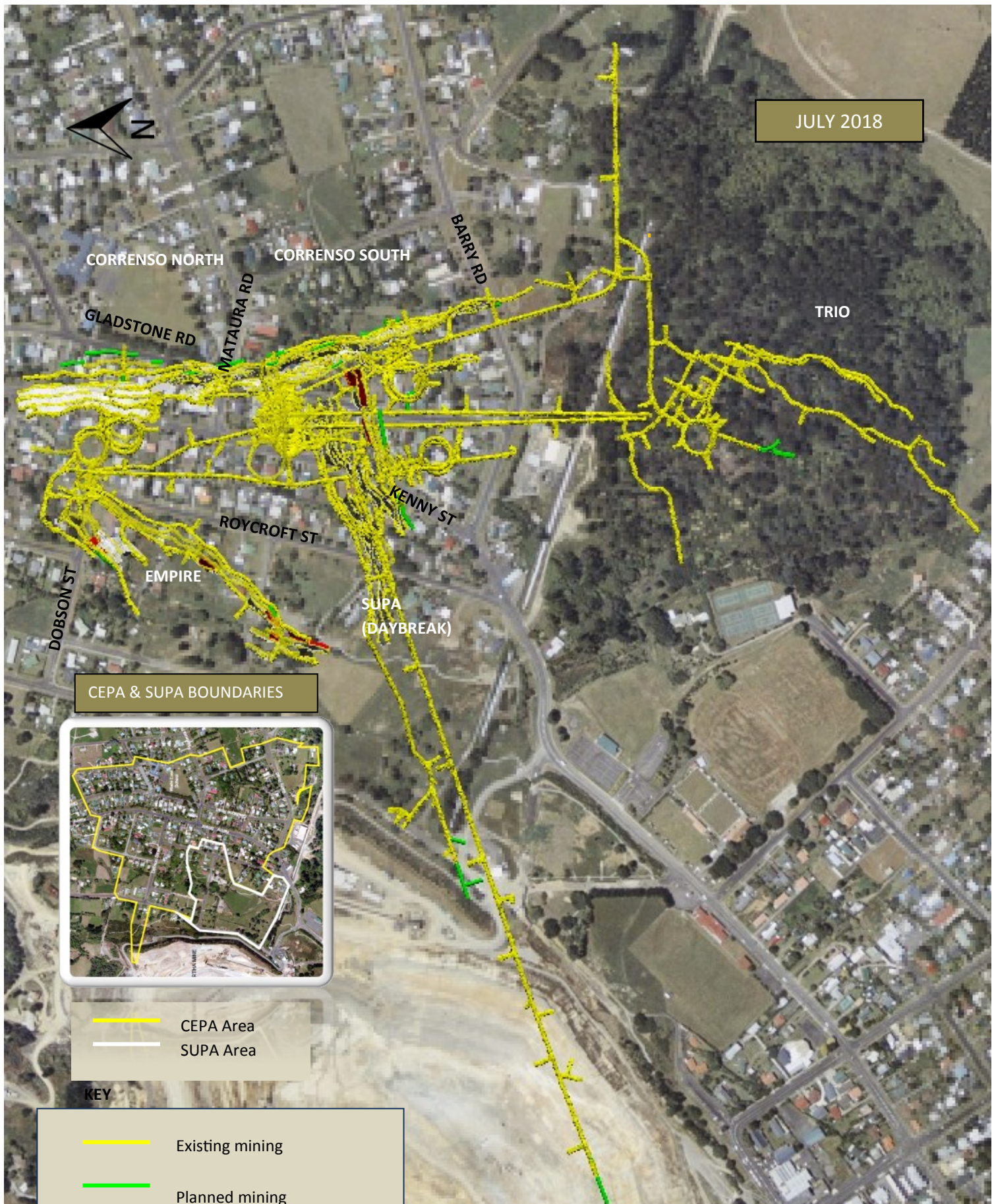
Empire (dashed line C-D shown on page three).





The Favona portal on the surface is 1120 RL,
so 942 RL is 178m below the portal and 725 RL
is 395m below the portal.





Mine Development Plan

Published at the start of each month as required by Condition 22a of the Correnso Underground Conditions of Consent and Condition 14a of the Slevin Underground Conditions of Consent.

0800 WAIHIGOLD (0800 924 444)

www.waihigold.co.nz