

Latest News

Sky Tower Stair Challenge

We have often used the Sky Tower as an example of how deep our mines are under Waihi. Now, six members of the OceanaGold Waihi Mines Rescue team are going to find out just how far that really is when they participate in the Sky City Stair Challenge. Each member of the team will carry 25 kilogrammes of equipment up 1,103 steps over 51 flights of stairs.



The event is an annual fundraiser for Leukaemia & Blood Cancer New Zealand (LBC). Each year firefighters from around New Zealand and international competitors from Australia, the US, Chile and Germany fundraise and compete in this event at Auckland's Sky Tower. You can participate too, not by climbing, but with the fundraising. If you see the team on the street in their gear, we invite you to contribute.



Find out more here.
firefightersclimb.org.nz
www.leukaemia.org.nz/get-involved/our-events



High Rainfall Events

Over the weekend we recorded 350mm of rain at our Baxter Road Processing Plant. This amount of rain can cause slips and flooding throughout the region. We often get asked how the mine site copes with such large volumes of water.

Tailings Impoundment | The tailings impoundments operate with a freeboard of just over three metres, this is the distance between the water level and the crest of the impoundment. If required, the water from TSF1 can be pumped to the Water Treatment Plant. Water from TSF2 is allowed to be discharged into the river.

Collection Ponds | The collection ponds are designed to contain any stormwater runoff. The ponds are large, and have the capacity to contain the volume of run-off generated from within their catchments during a ten-year return period, 72-hour duration storm taking into account a combination of both storage volume and pumping rate. The collection ponds are allowed to overflow beyond the 'ten-year storm' event into the Ruahorehore Stream.

Silt Ponds | Silt ponds collect runoff from operational areas that may carry suspended solids such as clays or soils which cause turbid or cloudy water. They are similar to the ponds that you see at other construction sites and subdivisions around New Zealand. Under normal conditions, suspended solids settle in the ponds by gravity, the water is discharged to the river if it meets the consent criteria, and the silt is removed from the ponds over summer.

continued on page two

Contact us:

Donna Fisher, Company Liaison Officer
0800 WAIHIGOLD (0800 924 444)

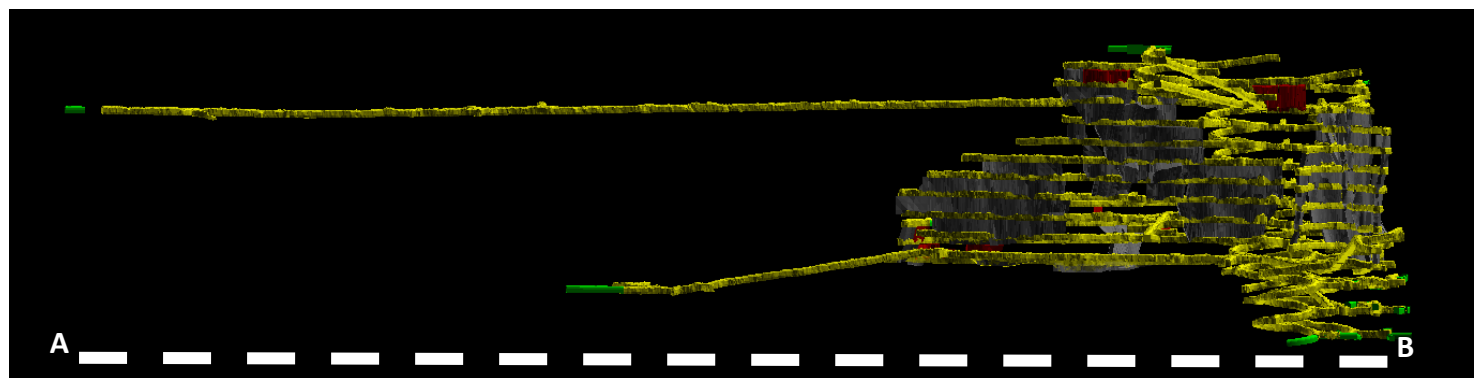
High Rainfall Events. *continued from page one*

In events greater than a ‘two-year storm’ the silt ponds will overflow, however the ponds must not allow more than a 10% increase in suspended solids compared with what is already flowing down the river from upstream. In addition, discharges from the site must not cause an adverse effect on the river, as determined by a comprehensive water and biological monitoring programme.

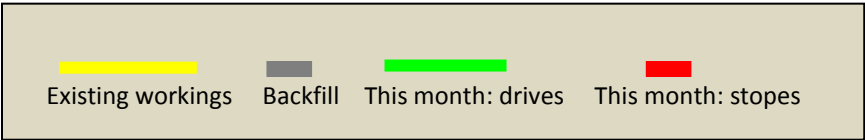
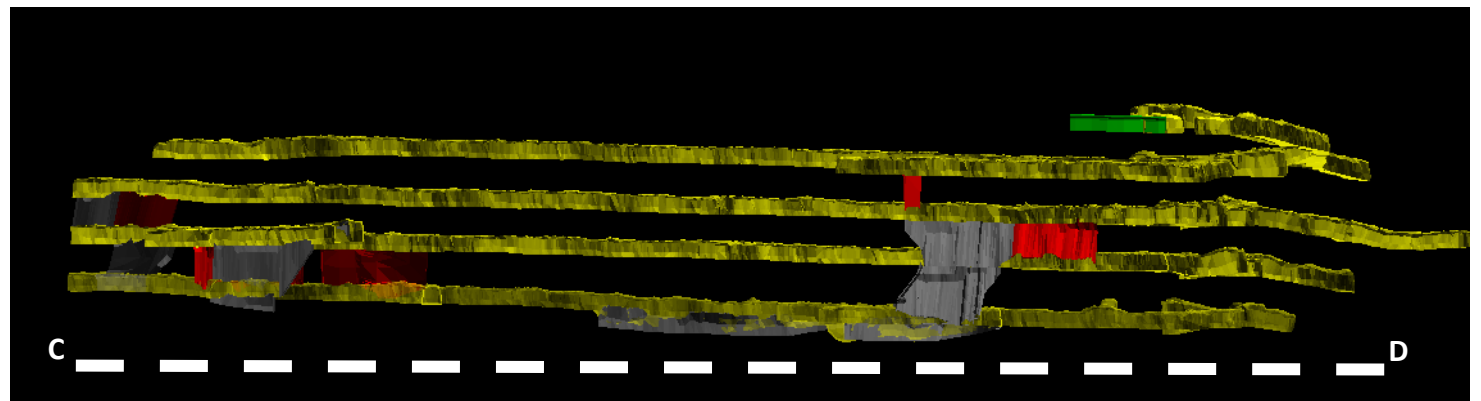
River Monitoring Programme | The site is designed and managed to ensure that any discharges either alone or in combination do not cause adverse effects on the Ohinemuri River. Monitoring of the Ohinemuri River and Ruahorehore Stream is carried out regularly and includes water and sediment quality monitoring and biological monitoring.

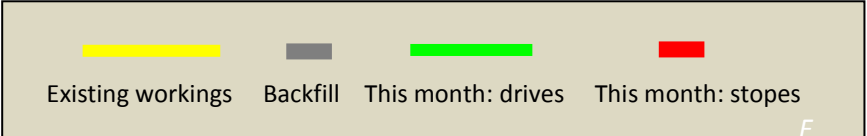
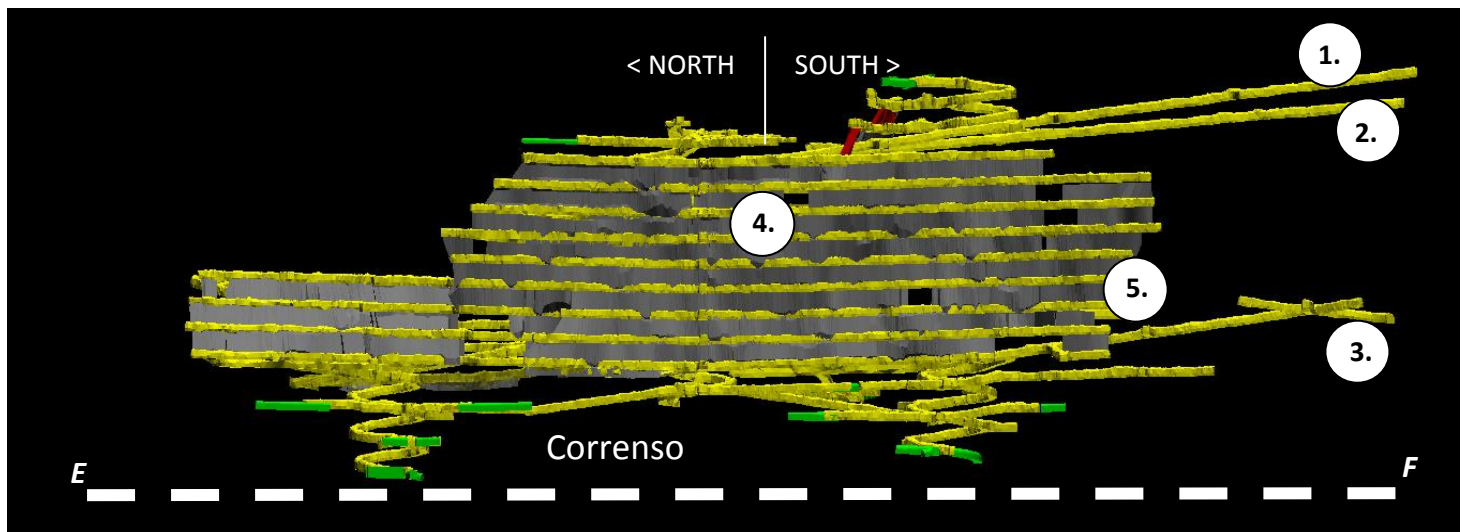
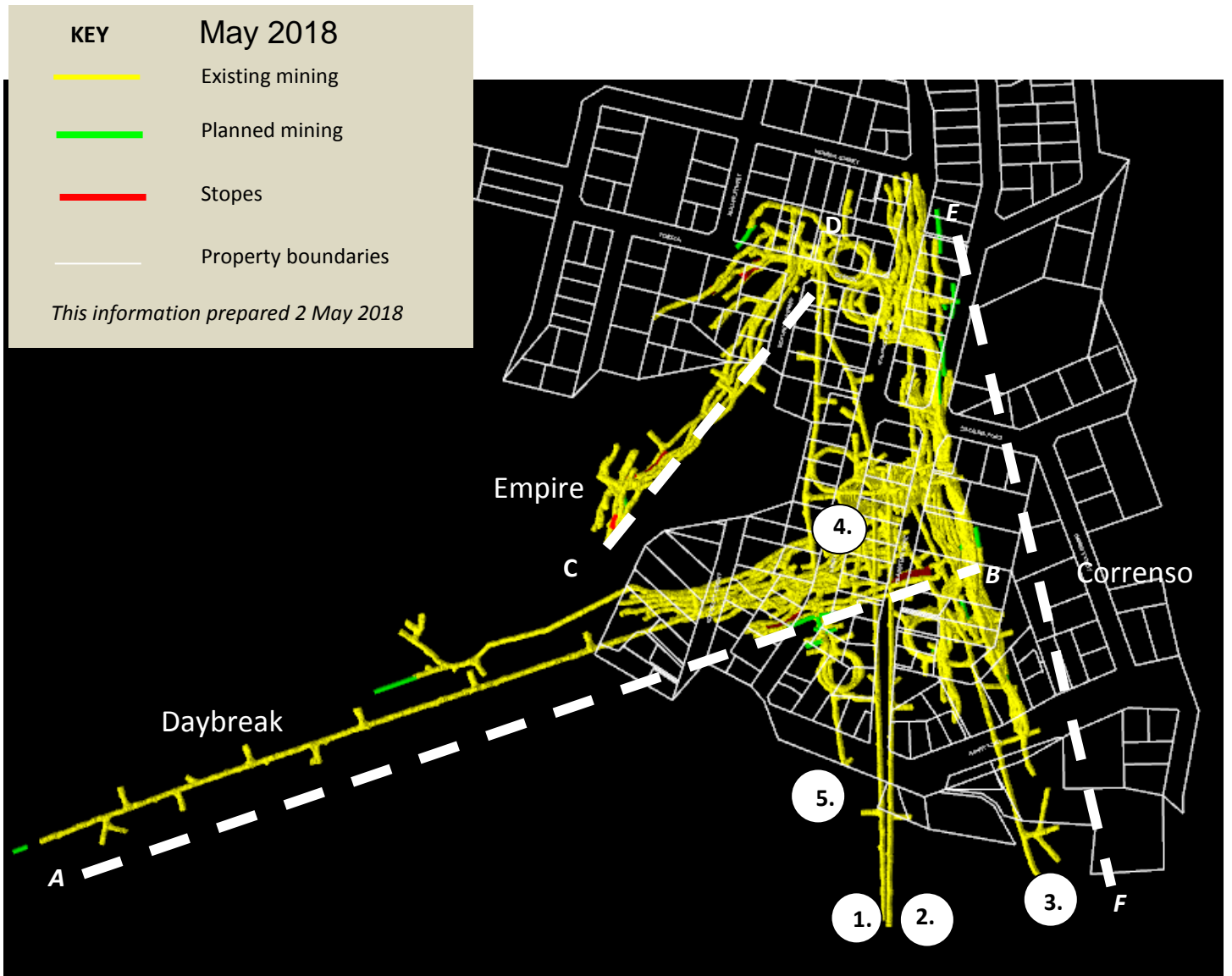
Who checks our performance? | Regulatory authorities Waikato Regional Council and Hauraki District Council monitor site operations to ensure that the environmental conditions set out in the various consents and licences are being met. In addition, Peer Review Panels and consultants engaged by the regulatory authorities provide a further independent check.

Daybreak (*dashed line A-B shown on page three*).



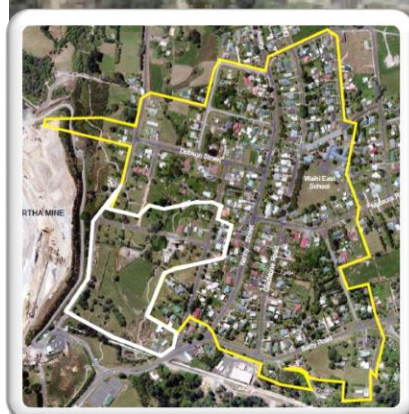
Empire (*dashed line C-D shown on page three*).





MAY 2018

CEPA & SUPA BOUNDARIES



— CEPA Area
— SUPA Area

SUPA
(DAYBREAK)

MDDP DRIVE



DOBSON ST

EMPIRE

ROYCROFT ST

KENNY ST

MATAURA RD

CORRENSE NORTH

CORRENSE SOUTH

BARRY RD

KEY

- Existing mining
- Planned mining
- Backfill
- Stopes

This information prepared 2 May 2018

Mine Development Plan

Published at the start of each month as required by Condition 22a of the Correnso Underground Conditions of Consent and Condition 14a of the Slevin Underground Conditions of Consent.

0800 WAIHIGOLD (0800 924 444)

www.waihigold.co.nz