

Latest News

Trillian Trekkers in Waihi



Above: Simon Dallow checks out our Moresby Avenue office and decides that he prefers the One News desk.

The Trillian Trek may be known to most by its previous name, the Variety Bash. On the first Sunday in March OceanaGold Waihi hosted trekkers for lunch.



In each town, the trekkers donate money to local groups. Waihi Bluelight received a cheque for \$500 before the group headed off for Rotorua.



Exploration drilling

We have a number of drill rigs operating on the surface at various locations in and around Waihi. We also have drill rigs working underground. What are they doing?

We are looking for gold deposits to extend the life of the mine. Exploration is an on-going part of our business. It takes many 'hits' from a large number of drill holes to determine the grade and extent of an ore deposit and work out whether it can be mined. Think of exploration as being a bit like digging up potatoes, but you have to do it with a long stick instead of a spade. If you poke the stick into the ground and don't hit a potato on your first attempt, does that mean there are no spuds in your garden and you should stop? Or, if you poke your stick into the garden three times and hit a potato each time, does that mean your entire garden is full of potatoes? That's what exploration is like, but with very tiny potatoes which you think might be buried very deeply, or which may not be there at all. As an example, it took forty exploration drill holes to 'find all the potatoes' and confirm the extent and grade of the main section of Correnso.



When we conduct exploration drilling from the surface the first 100 metres, sometimes more, is usually of no interest to us as it does not contain mineable quantities of gold. We have the expense of drilling through this ground to access the target area. If we can reach the target areas from underground it is cheaper and quicker as we are beginning the hole at depth. There's also another benefit. Drill holes started at the surface are angled so that they intercept the vertical vein systems prevalent in this area. Drilling from underground means that we can drill shorter holes at right angles to the vein systems to intercept them.

When we say we have had a 'hit' we mean that we have drilled into an area that, when the core is retrieved and analysed, shows significant mineralisation. If we get a 'hit' we then need to decide whether that level of mineralisation makes it worthwhile continuing to drill in that area.

Contact us:

Donna Fisher, Company Liaison Officer
0800 WAIHIGOLD (0800 924 444)

Correnso/SUPA Community Meeting, Thursday 15 March, 4.00pm

As advised by email, the next six-monthly Correnso/SUPA Community meeting will be held at 4.00pm on Thursday 15 March at the OceanaGold Education Centre, corner of Moresby Avenue and Savage Road. This time was decided by those present at the last meeting as being the most convenient. Also, as requested at the last meeting, jam and scones will be served. ☺

Agenda items:

Welcome

- o Matters raised at the last meeting

Item one: Project overview

- o Martha open pit, North Wall
- o Correnso/SUPA
- o Near mine exploration

Item two: Social overview

- o Communication – monthly mine plan
- o AEP

Item three: Environmental overview

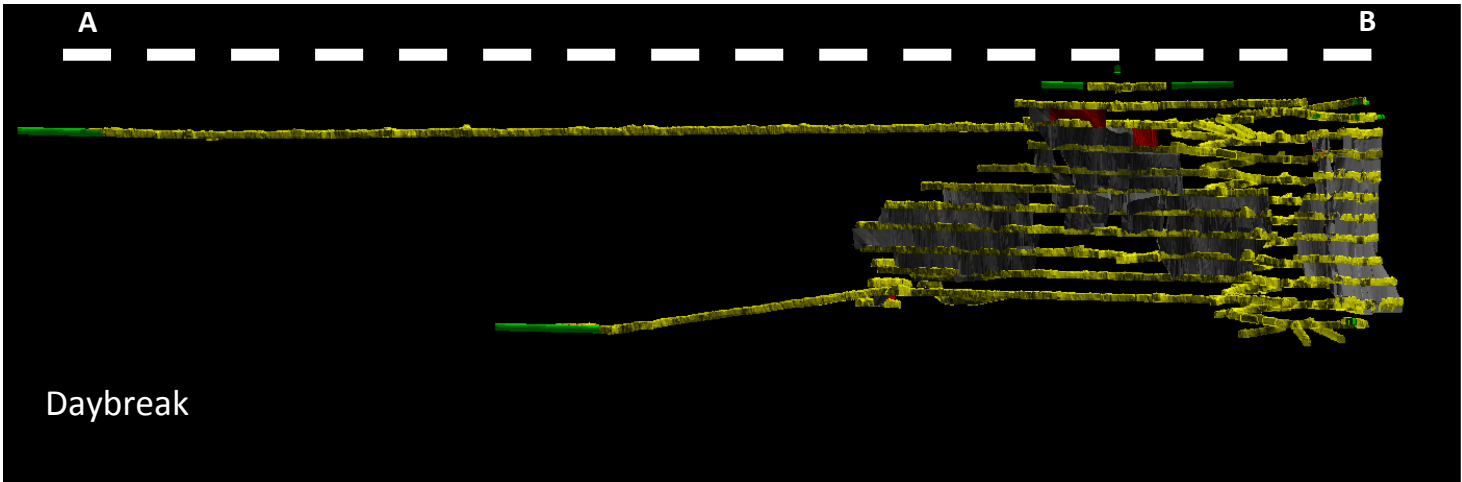
- o Dewatering and Settlement management:
 - piezometer update
 - six monthly settlement survey
- o Vibration management:
 - Six months to date performance

General business

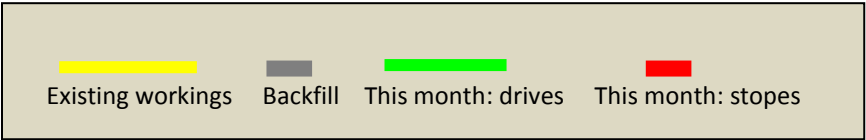
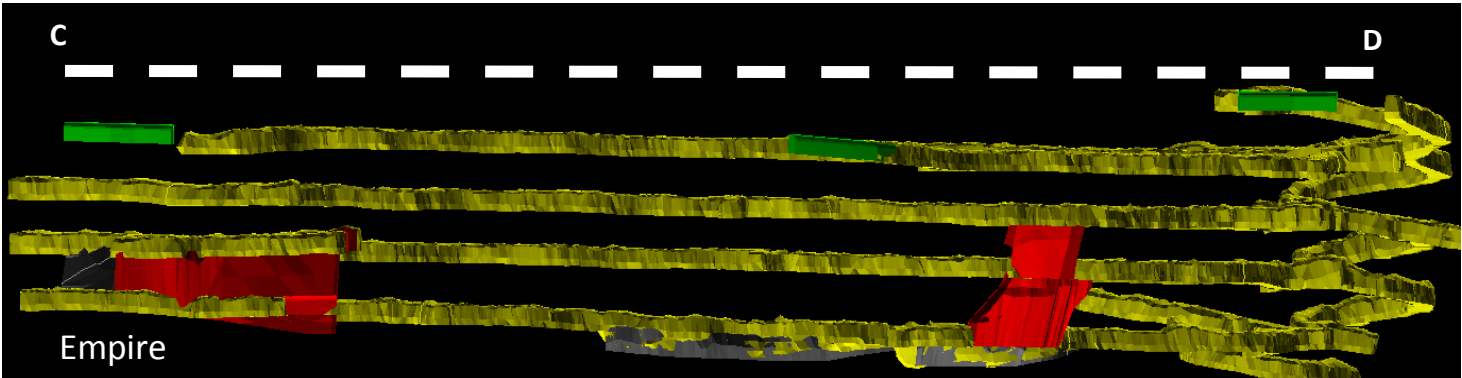


The OceanaGold Board visited Waihi recently and spent time underground talking with a number of staff.

Daybreak (dashed line A-B shown on page three).



Empire (dashed line C-D shown on page three).



KEY

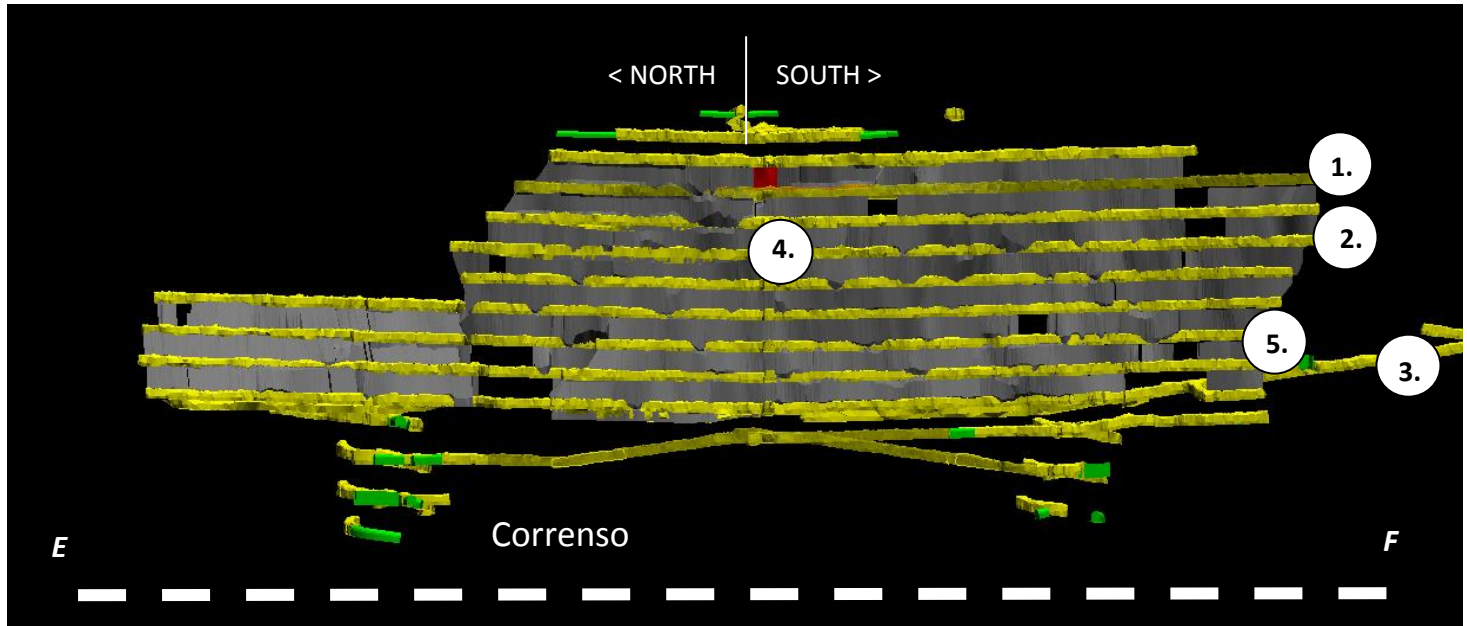
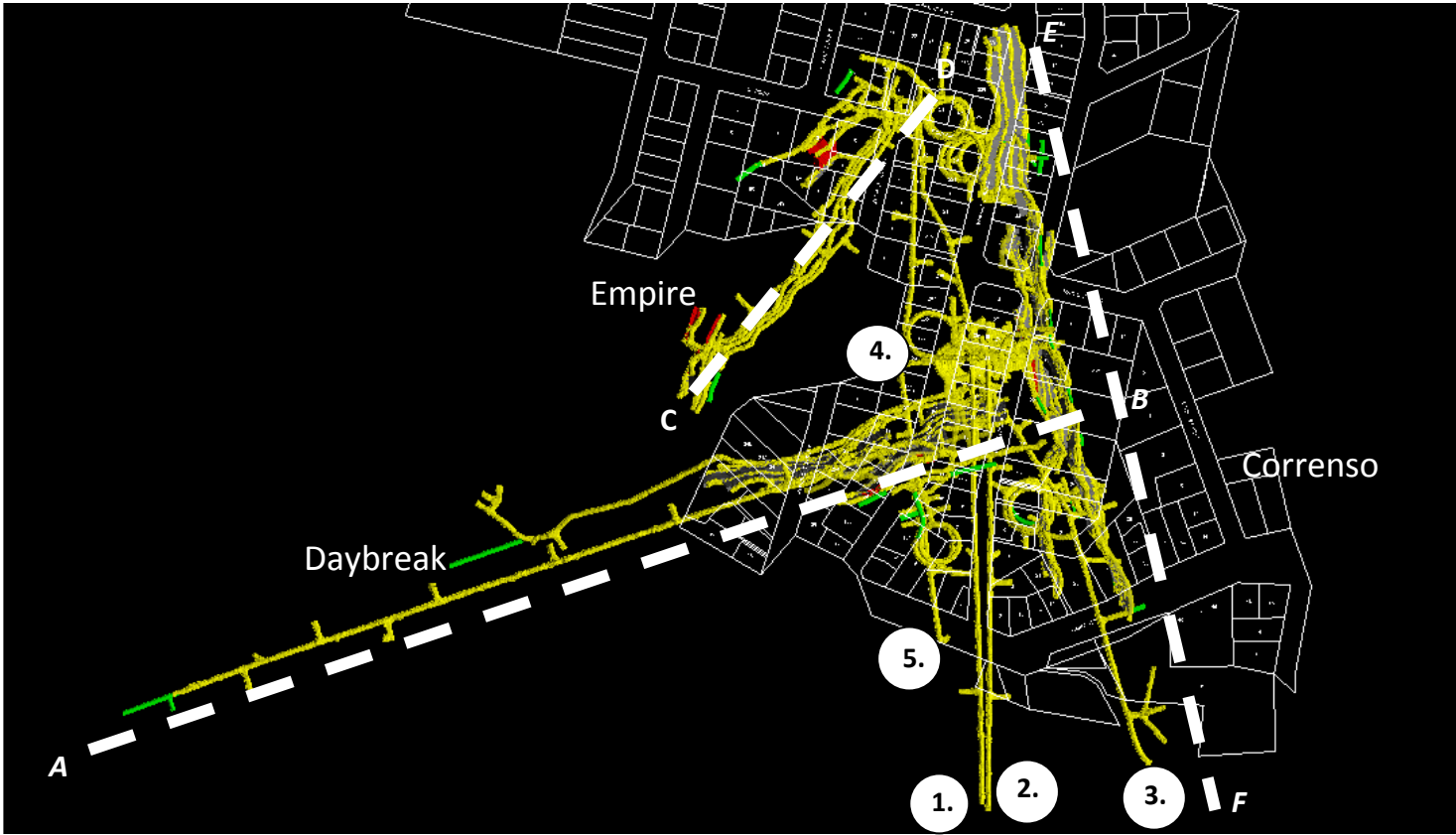
March 2018

Existing mining

This month's planned mining

Property boundaries

This information prepared 2 March 2018



Existing workings

Backfill

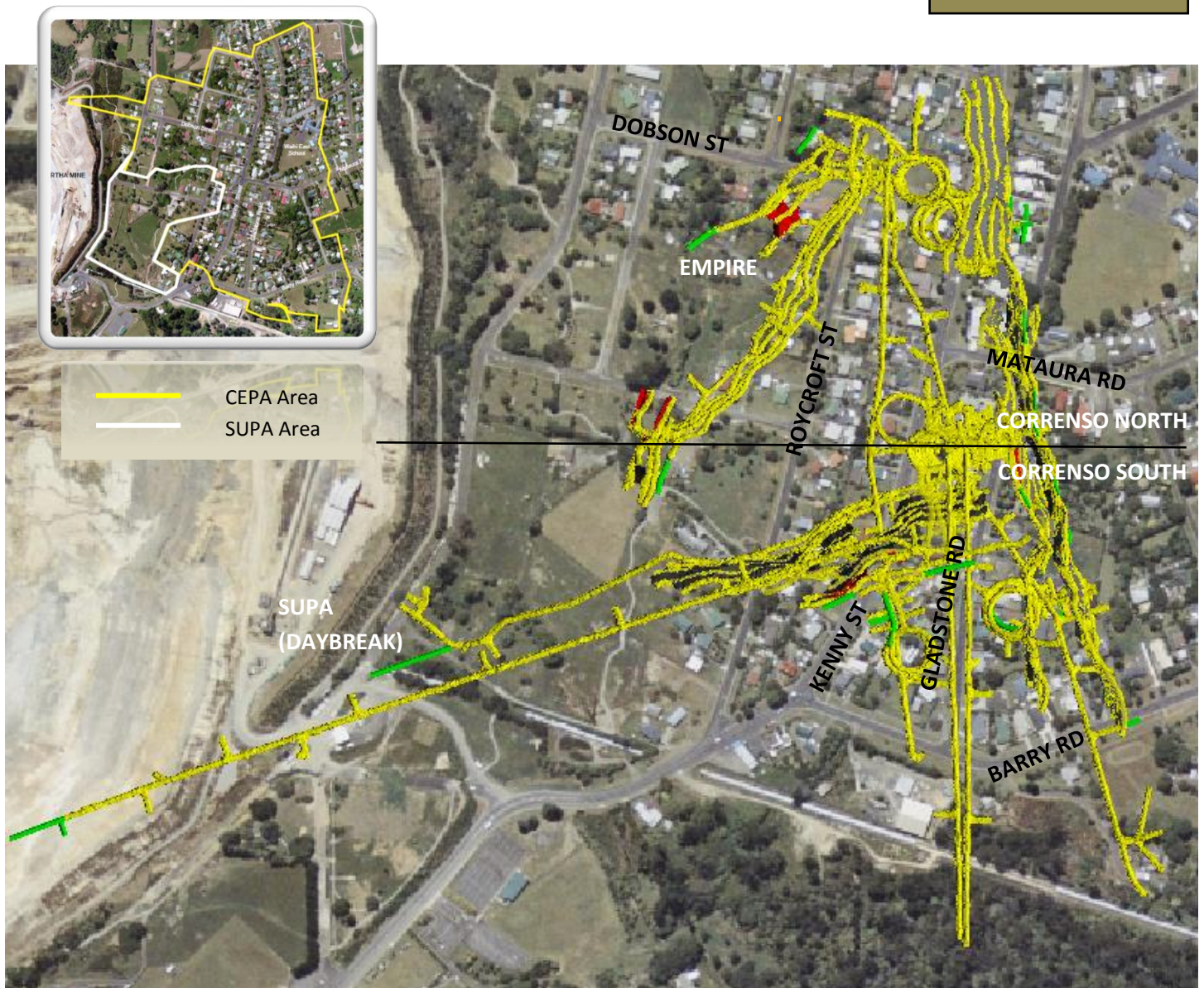
This month: drives

This month: stopes

F

CEPA & SUPA BOUNDARIES

MARCH 2018



KEY

- Existing mining
- Planned mining for this month
- Backfill
- Stopes

This information prepared 2 March 2018

Mine Development Plan

Published at the start of each month as required by Condition 22a of the Correnso Underground Conditions of Consent and Condition 14a of the Slevin Underground Conditions of Consent.

0800 WAIHIGOLD (0800 924 444)

www.waihigold.co.nz