

Latest News

Rooms 6 & 8 come for a visit

In return for all of the help that Room 6 gave us (see main story on this page) we invited them to see our Khaki Miners Christmas Display at the Education Centre. They brought their friends from Room 8 with them.



Thanks Waihi East Primary School

Towards the end of last year we approached Waihi East Primary School for some help. We wanted to enter into an international photo competition which had as its topic: *'How is your organisation using fresh ideas and technologies to shape the mine of the future?'* We thought that the Blast Notification Devices used in Waihi East homes as well as the school and preschools would be a good topic, but we needed help with the photo.



That's where the students of Room 6 came to our assistance. We giggled together through a 30-minute photo shoot to produce the image above. The photo was captured by hovering our drone over the playing field. This image from Waihi has now been chosen to represent all of OceanaGold Corporation's mines from around the world and will be entered into the competition in Canada early in 2018. Thanks Room 6. We'll let you know how we get on.



Contact us:

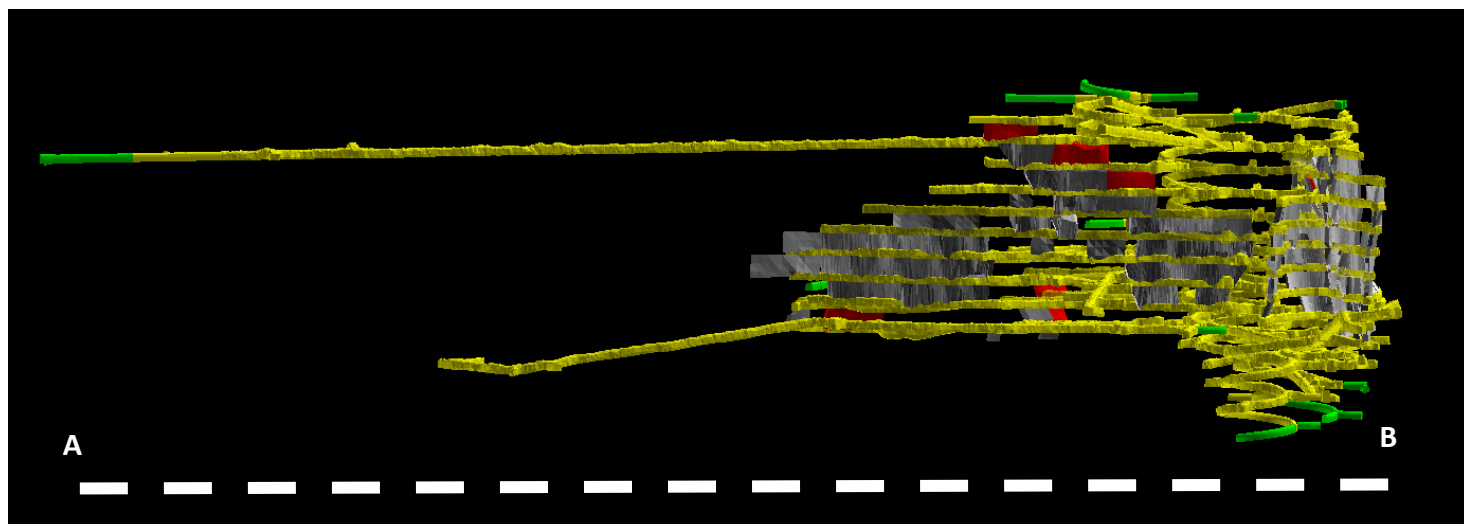
Donna Fisher, Company Liaison Officer
0800 WAIHIGOLD (0800 924 444)

A guide to mining equipment

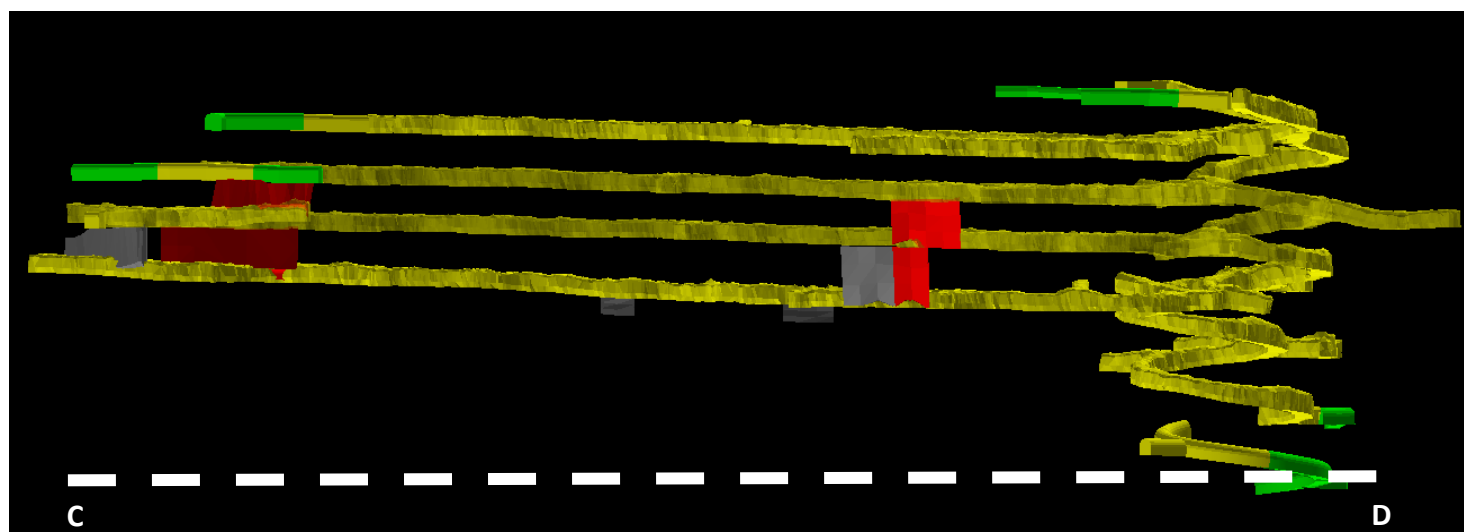
The mining industry is home to a bewildering array of large specialised machinery. Some of it you see, but a lot spends most of its life underground. In the past we have provided photographs and descriptions, so that Waihi East residents can understand what machinery is working hundreds of metres below the surface. Recently we were given the poster on the right, and it's just too much fun not to share. From now on, if we write about a 'squishy bulldozer', you will know exactly what we mean.



Daybreak (dashed line A-B shown on page three).



Empire (dashed line C-D shown on page three).



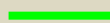
Existing workings	Backfill	This month: drives	This month: stopes

KEY

January 2018



Existing mining

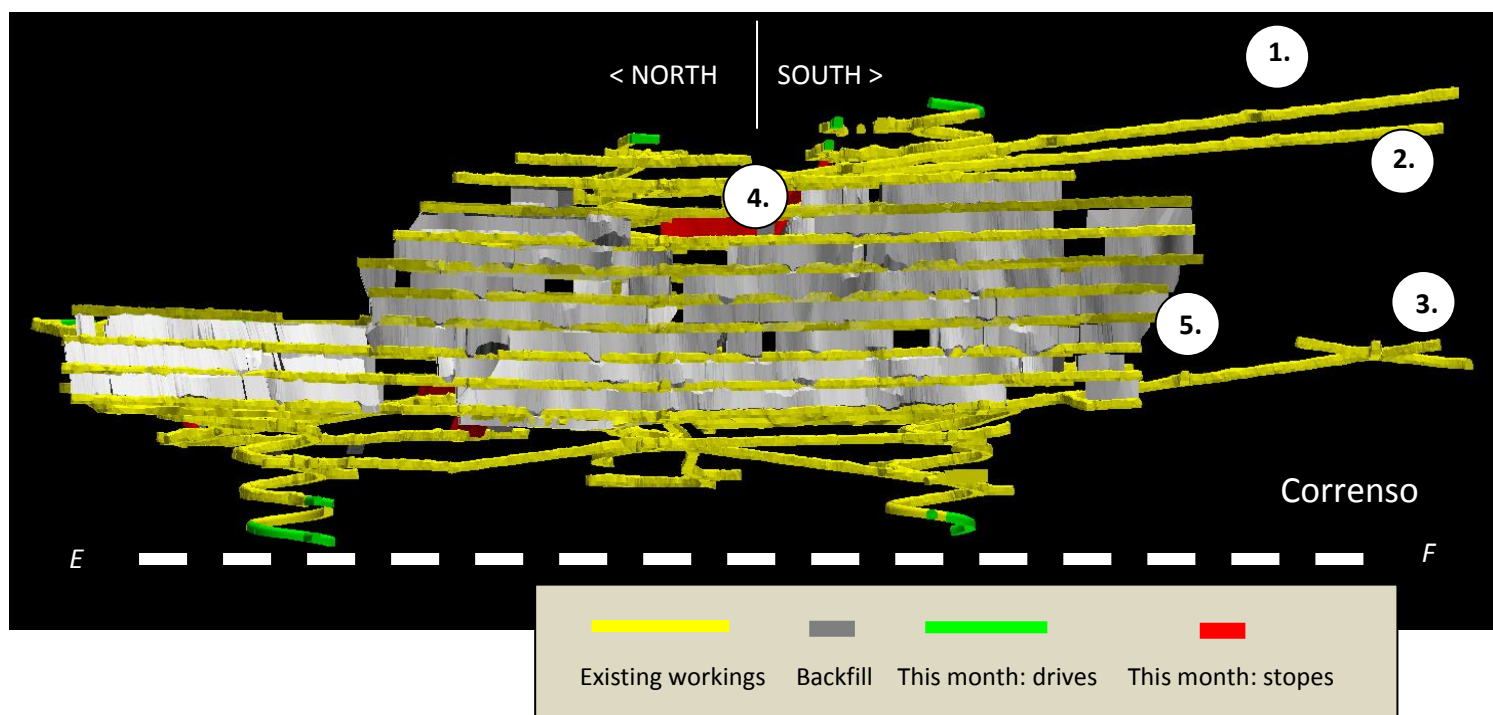
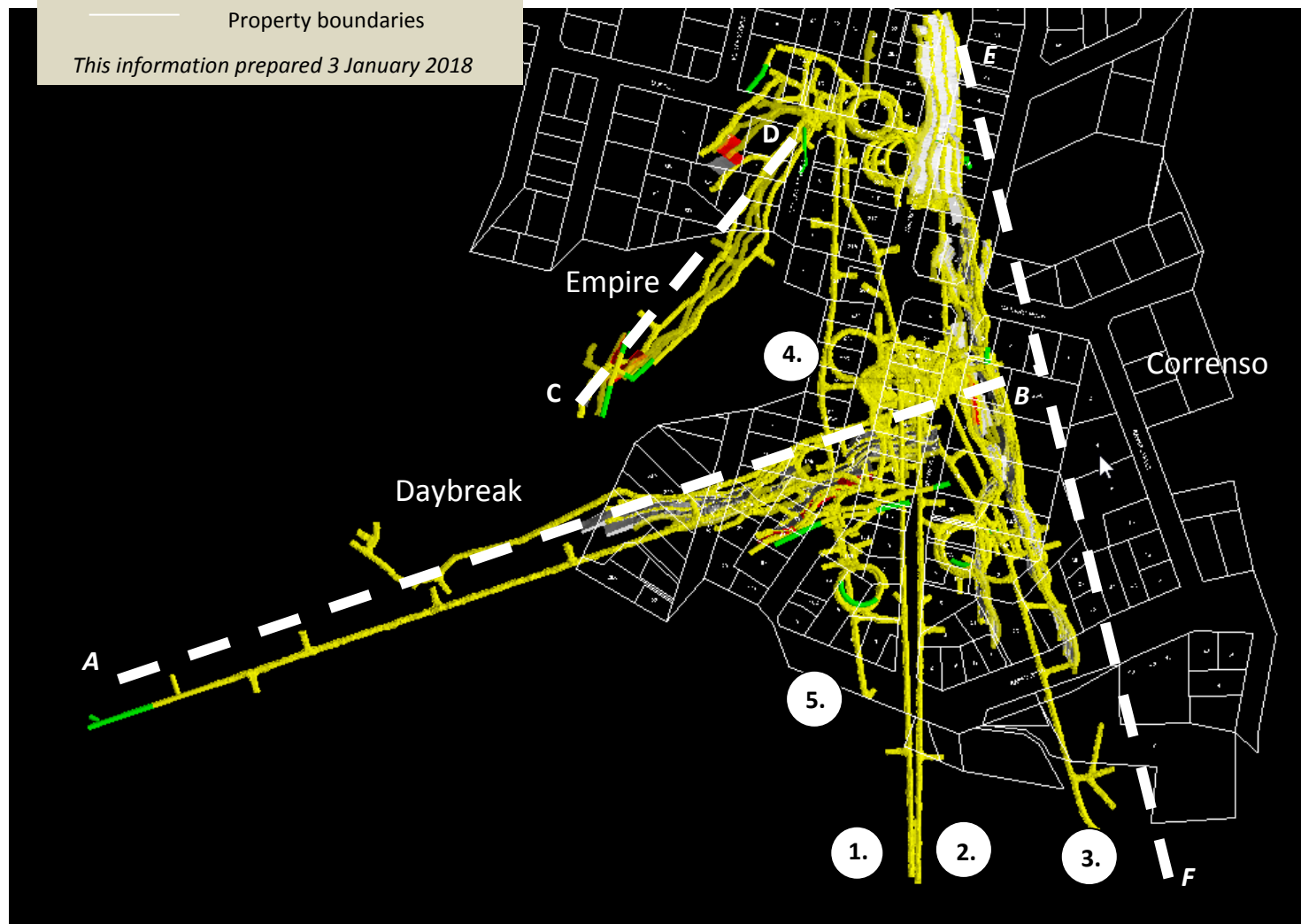


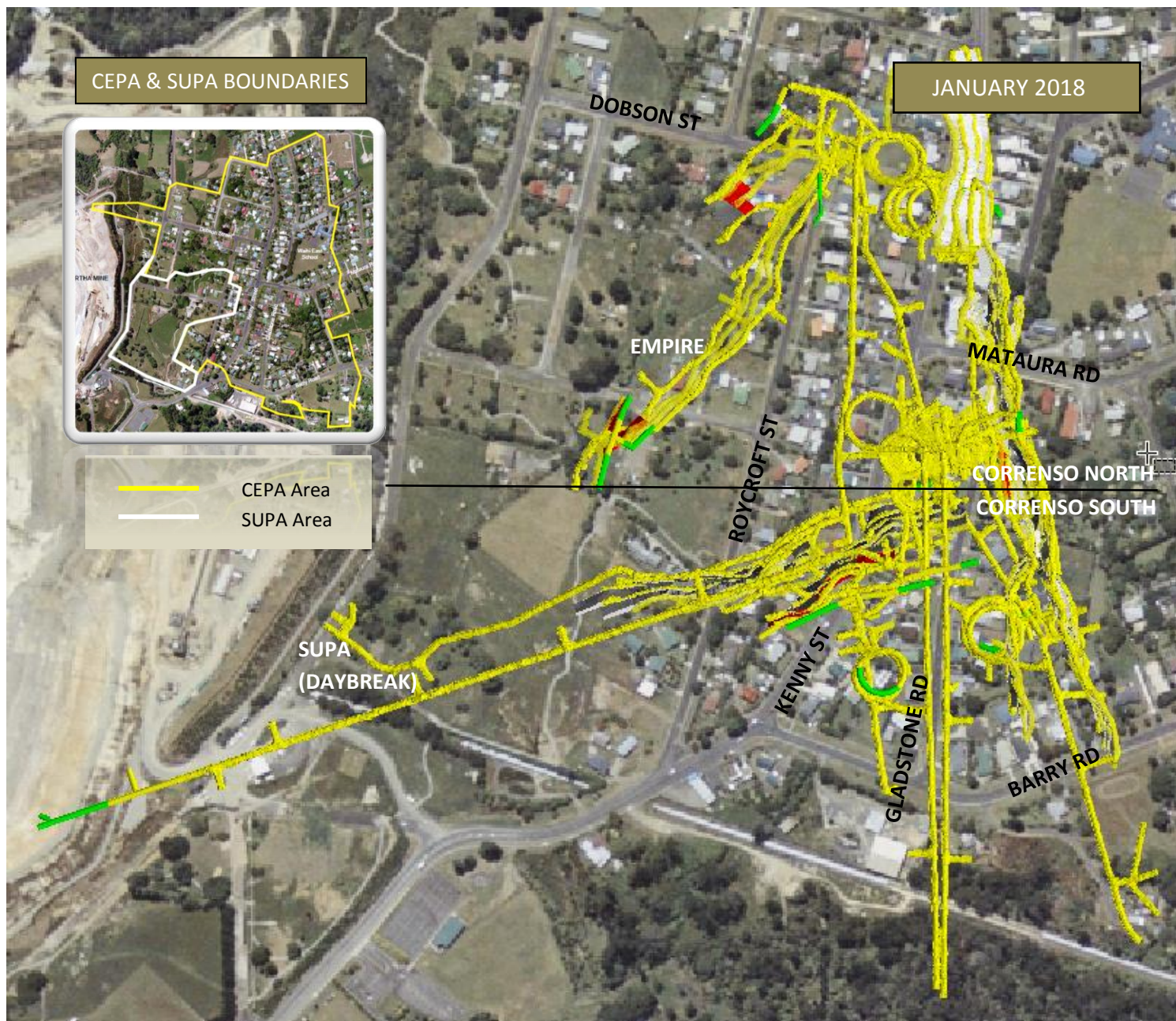
This month's planned mining



Property boundaries

This information prepared 3 January 2018





KEY

- Existing mining
- Planned mining for this month
- Backfill
- Stopes

This information prepared 3 January 2018

Mine Development Plan

Published at the start of each month as required by Condition 22a of the Correnso Underground Conditions of Consent and Condition 14a of the Slevin Underground Conditions of Consent.

0800 WAIHIGOLD (0800 924 444)