

Latest News



Moresby Avenue office hours over the holiday period

Our Administration Office at Moresby Avenue will be closed at the end of the day on Friday 22 December and will reopen on Wednesday 3 January. The Community Engagement Line 0800 WAIHIGOLD will be available 24 hours a day throughout the holiday period.

January 2018 East Ender

As the beginning of January is a statutory holiday, the January edition of the *East Ender* will be a few days later than usual.



How do we contribute to the community?

OceanaGold is the largest gold mining company in New Zealand, with operations at Waihi in the North Island and Macraes in the South Island. The company also owns the Globe Progress mine near Reefton which is now closed and is currently being restored. How do we contribute to the economy of the New Zealand and that of our host communities? Below is data gathered from 2016 as reported by KPMG.

New Zealand

- \$330 million, or 88% of OceanaGold's expenditure on its New Zealand operations reached people and businesses in New Zealand through wages and procurement of goods and services.
- \$42.5 million was paid to government in the form of royalties, corporate tax, permits, licences, rates and annual fees.
- OceanaGold was responsible for 1.1% of New Zealand exports by value, and is the second largest exporter to Australia.
- Community investment and assistance was 2.15% before pre-tax profit. This is four times the London Benchmarking Group's community investment benchmark for Australia and New Zealand and represents \$1299 for each staff member.
- In 2016 81% of employees lived locally at the Macraes site and 59% of employees lived locally to the Waihi site. This resulted in \$64 million of wages and benefits being retained in these regions. This creates flow on effects and stimulates local and regional economic growth.

The average income of OceanaGold employees is double the New Zealand average. Spending by employees within their local region creates flow on effects, raises household incomes, and stimulates local and regional economic growth.

Waihi

- The Waihi site had a staff of 350, equivalent to 4.4% of the total Hauraki workforce, and generated \$29 million in wages and salaries.
- \$210,000 was contributed to local schools, child-care, pre-schools and educational trusts.

Contact us:

Donna Fisher, Company Liaison Officer
0800 WAIHIGOLD (0800 924 444)



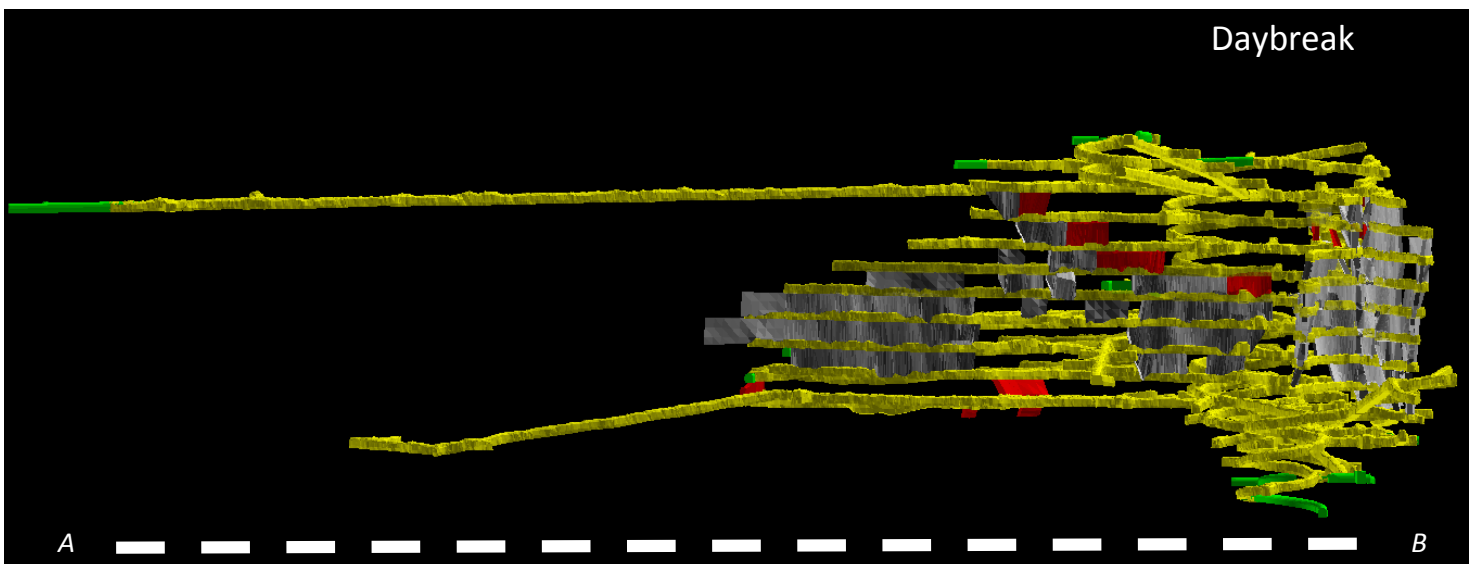
The Khaki Miners Christmas display is available for groups to view leading up to Christmas. Contact us on 0800 WAIHIGOLD (0800 92 44 44) to arrange a time to visit.

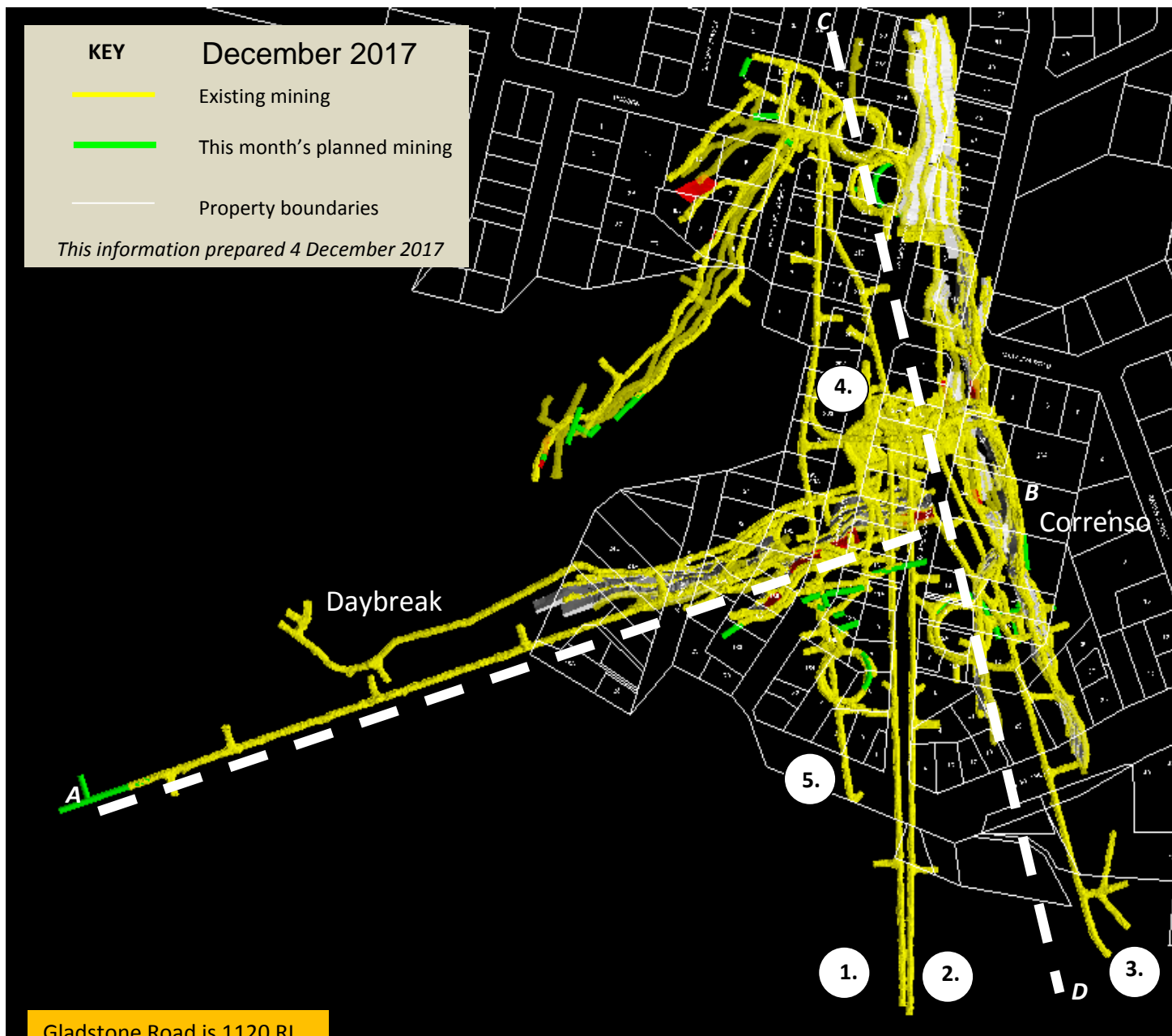


Christmas underground

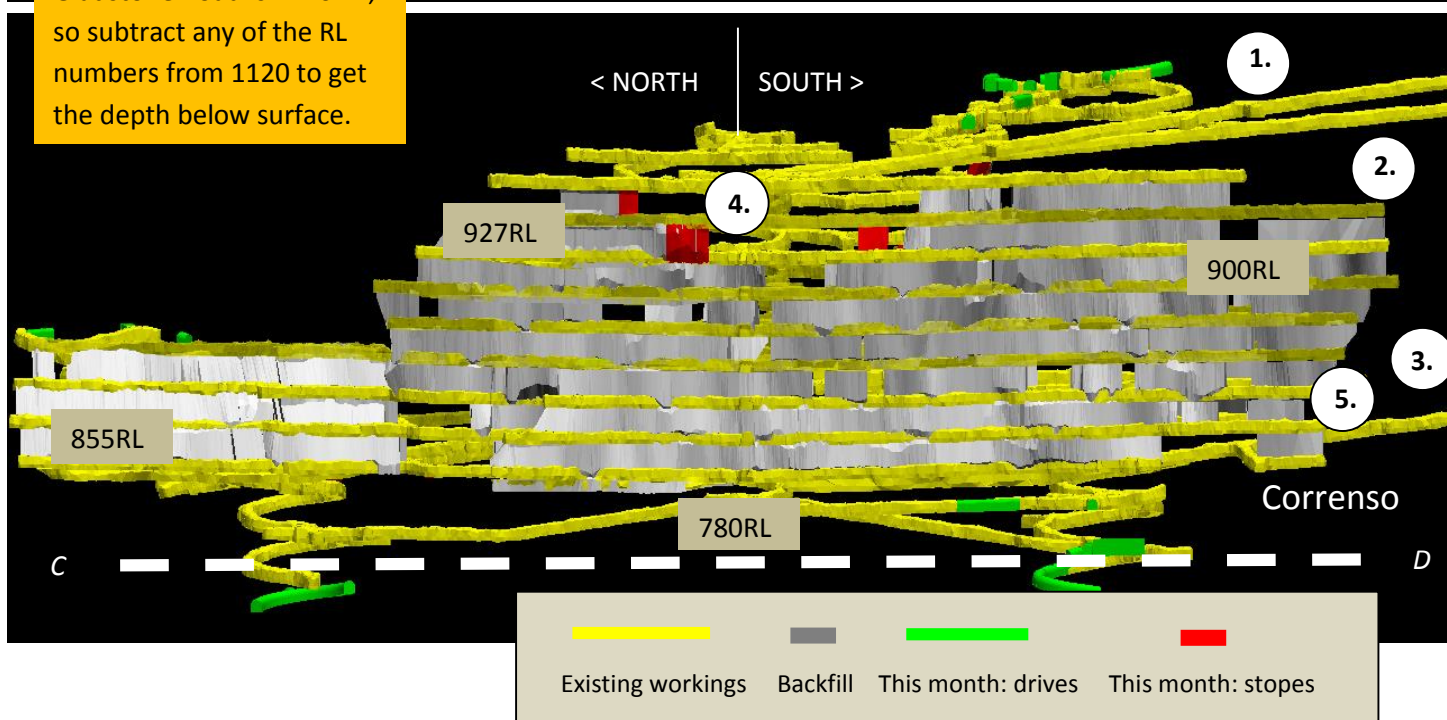
By now we all know the story of the Waihi miners who tunnelled underground during the First World War as members of the New Zealand Engineers Tunnelling Company. The war didn't stop for Christmas. In recognition of the sacrifice made by Waihi men and the wives and families they left behind, Waihi Heritage Vision in partnership with OceanaGold has created an underground Christmas at the Khaki Miners facility downstairs at the Education Centre. Special thanks to McLeay's Shoes, Dillimores Furnishing & Flooring, and the Hauraki Woodcrafters Club for all their help in preparing and presenting this display. The exhibition features letters home from men in France, as well as letters from children to their fathers. It's a poignant reminder for us all of what happened 100 years ago.

The graphic below is a cross section through the underground workings on the dotted line A-B shown on page three. The Correnso cross section follows line C-D.



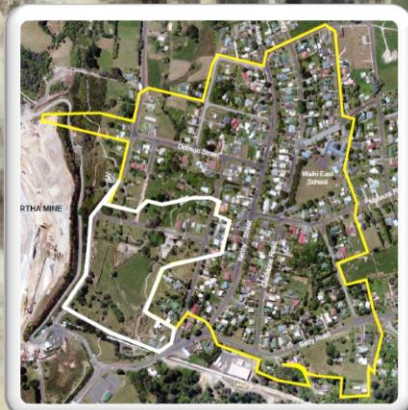


Gladstone Road is 1120 RL, so subtract any of the RL numbers from 1120 to get the depth below surface.



CEPA & SUPA BOUNDARIES

DECEMBER 2017



— CEPA Area
— SUPA Area

DOBSON ST

MATAURA RD

CORRENTO NORTH
CORRENTO SOUTH

SUPA
(DAYBREAK)

POYCROFT ST

KENNY ST

GLADSTONE RD

BARRY RD

KEY

- Existing mining
- Planned mining for this month
- Backfill
- Stopes

This information prepared 4 December 2017

Mine Development Plan

Published at the start of each month as required by Condition 22a of the Correnso Underground Conditions of Consent and Condition 14a of the Slevin Underground Conditions of Consent.

0800 WAIHIGOLD (0800 924 444)