

Latest News

CEPA/SUPA six monthly meeting, Wednesday 27 September, 3.00pm, Education Centre.

The regular six-monthly community meeting will be held at the Education Centre in a few weeks. These meetings provide a forum for the company to detail what has happened at the mine over the last six months and for members of the community to bring up any topics they would like to discuss about CEPA or SUPA. Light refreshments are provided.

Martha North Wall

Work on the Martha mine North Wall has now ended. Over 230,000 cubic metres of material has been removed for the top of the wall. Removing this weight has 'unloaded' the slip and significantly reduced movement. We have been monitoring the wall using a radar system and other devices. The radar provides accurate real time information. A number of prisms were damaged as a result of the North Wall slip. These prisms were used in conjunction with the radar to monitor ground movement. The company has progressively re-established a more robust prism monitoring network.

Sinkholes in Waihi



Almost done. The sinkhole as seen on Friday morning, 1 September.

The sinkhole which was discovered on Tuesday 29 August occurred on land owned by Hauraki District Council. Following the 2001 'house in the hole' event Hauraki District Council and central government commissioned Geological and Nuclear Science (GNS) to conduct comprehensive research of historic mining data complemented with drilling around the Martha open pit and immediate area.

This work confirmed that there were a number of stopes left from historic mining that had not been backfilled and there was the possibility of these voids migrating to the surface and creating subsidence events. A High Hazard Zone was defined and, as a result, a number of houses were removed from the area which we now know as Slevin Park. It is considered safe for members of the public to walk through this area, but not for people to live there. The east of Seddon Street was closed, and houses were also removed from Kenny Street and Brickfield Road.

The recent sinkhole is above the Royal vein between the Martha open pit and the Waihi Rugby Club. On a map, the 1961, 1999, 2001 subsidences and most recent event all line up. It is also worth noting that the most recent sinkhole occurred directly below what used to be Seddon Street before this part of the road was closed after the 2001 event. It is for this reason that the most recent subsidence was described as 'surprising, but not unexpected'.

Continued on page two

Contact us:

Donna Fisher, Company Liaison Officer
0800 WAIHIGOLD (0800 924 444)

From page one

How do these sinkholes form?

When early miners removed gold bearing ore from underground they did not always backfill the voids (called 'stopes' in mining language). Over time, the top of these voids can fall. If this happens often enough and the void is large enough that it does not choke off, it migrates closer to the surface with each fall. When the top of the void gets very close to the surface, the weak rock, clay and topsoil above the void fail and a sinkhole forms. This is what has happened in the recent event. We know from the GNS research that the top 20 metres of the stope was not backfilled and previously an exploration drill hole intercepted a void above this historic stope.

What is to stop this happening again?

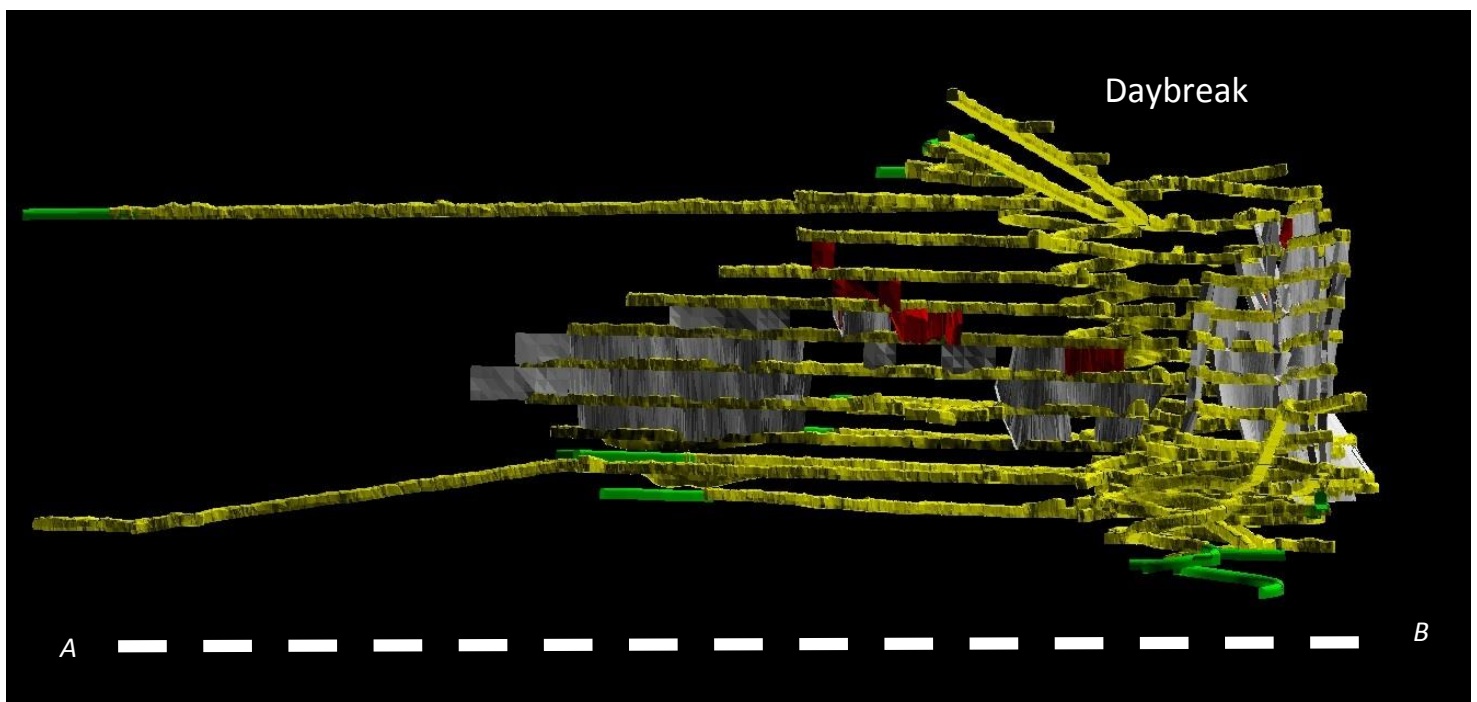
There is the potential for sinkholes to form in the High Hazard Zone as a result of historic mining. This is why these areas have no buildings or amenities on the surface. In modern mining, all stopes are backfilled to ensure that there will be no subsidence now or in future years.

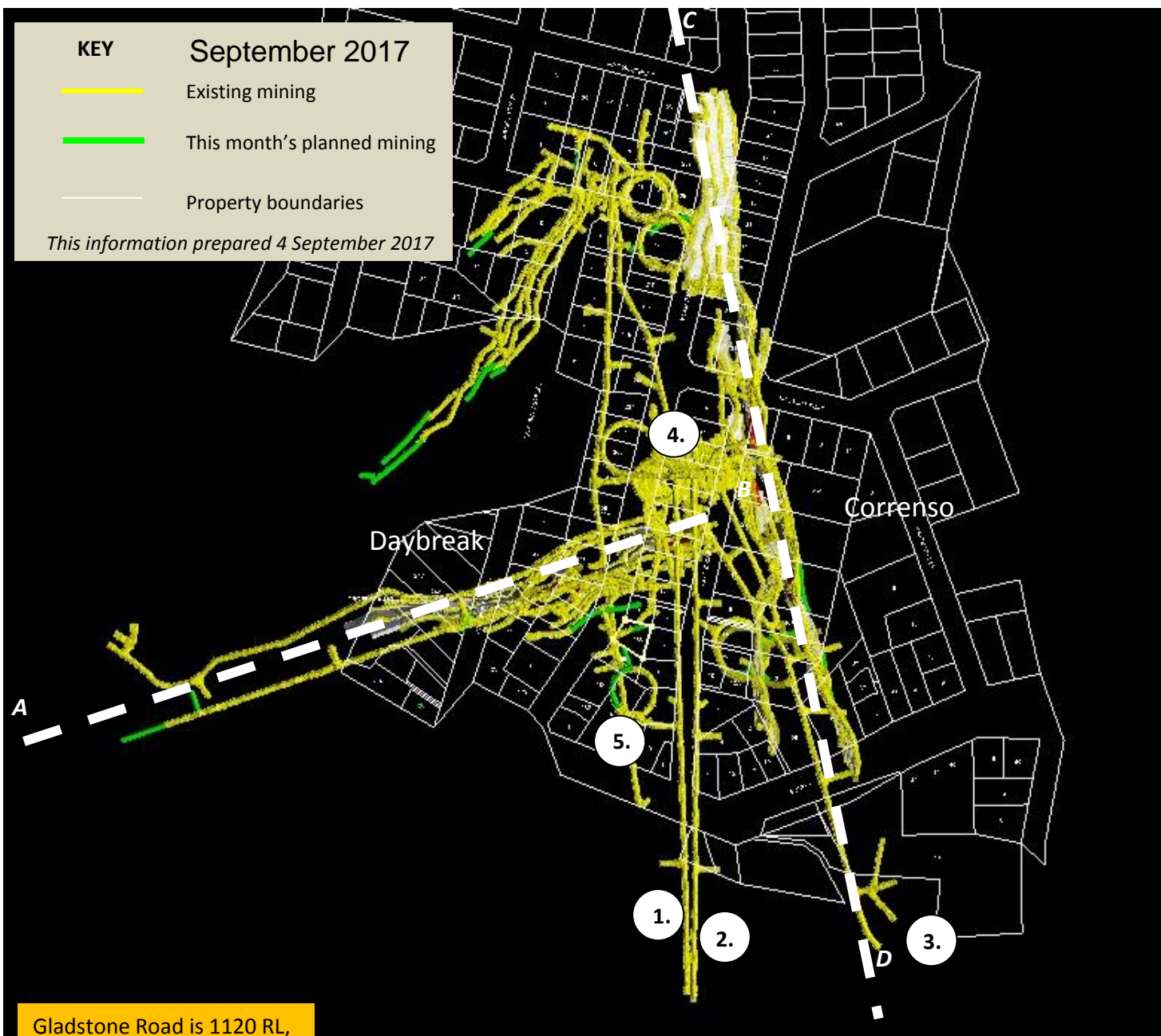
CEPA/SUPA six monthly meeting, Wednesday 27 September, 3.00pm, Education Centre.

Agenda

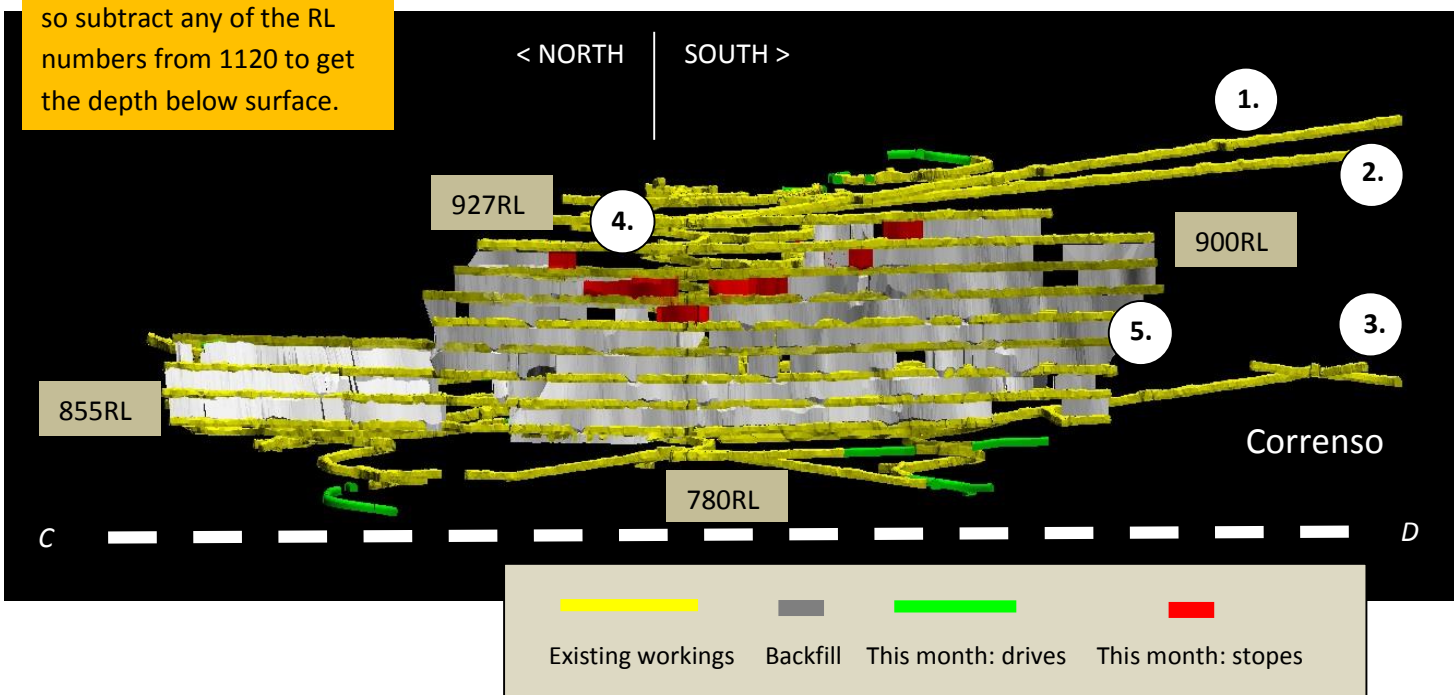
- **Welcome**
- **Matters raised at the last meeting**
- **Item one: Project overview**
 - Martha open pit, North Wall
 - Correnso
 - SUPA
 - Martha Development Drive
 - Recent Royal vein subsidence
 - Near mine exploration
- **Item two: Social overview**
 - Communication – monthly mine plan
 - AEP
 - Social Impact Management Plan (SIMP)
- **Item three: Environmental overview**
 - Dewatering and Settlement management:
 - piezometer update
 - six monthly settlement survey
 - Vibration management:
 - Six months to date performance
- **General business**

We've added the Daybreak workings to our monthly mine plans. The graphic below is a cross section through the underground workings on the dotted line A-B shown on the page three. The Correnso cross section follows line C-D.



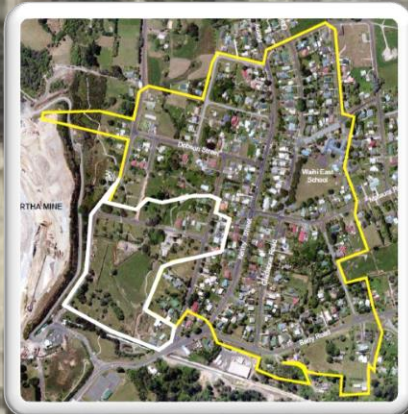


Gladstone Road is 1120 RL, so subtract any of the RL numbers from 1120 to get the depth below surface.

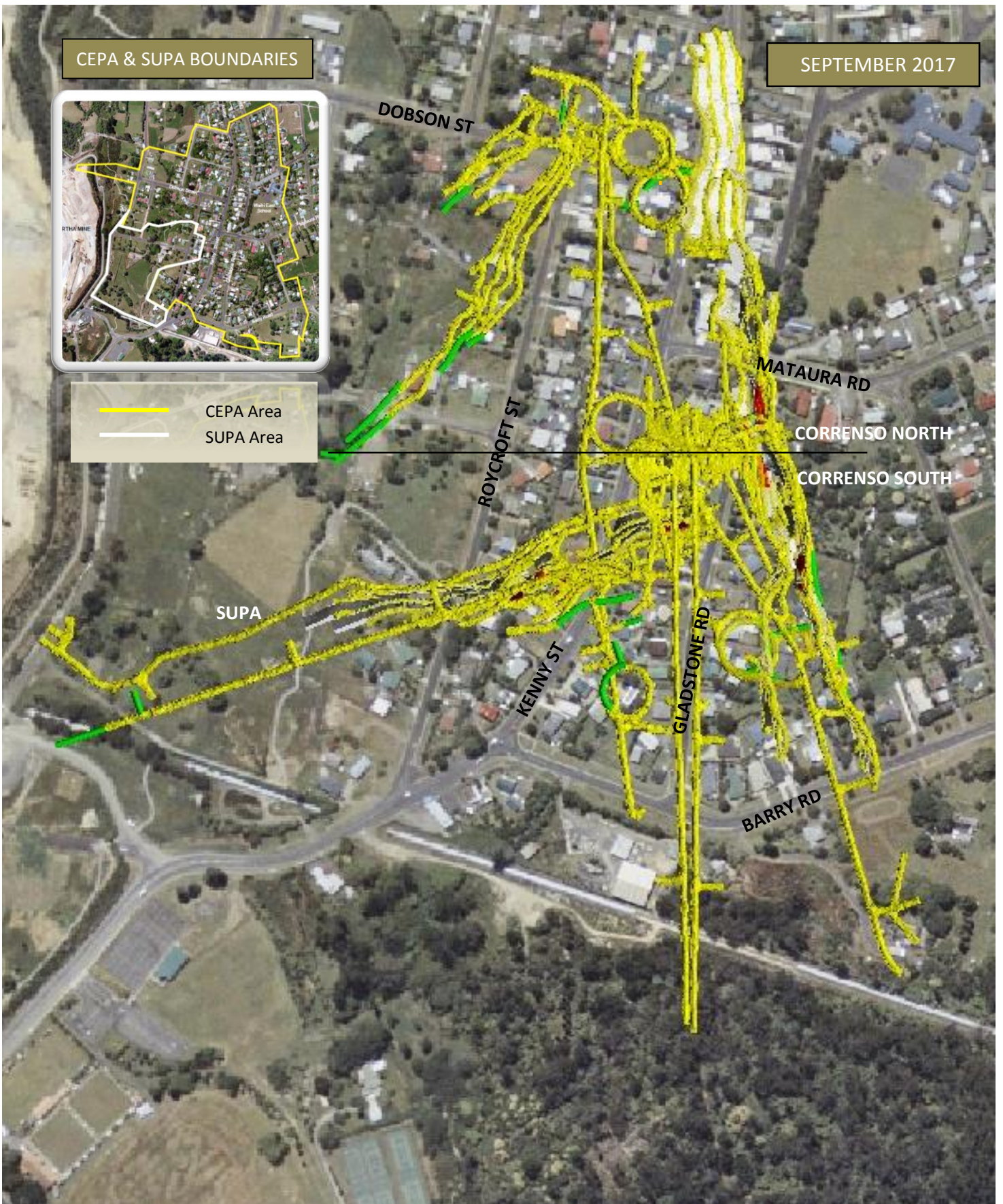


CEPA & SUPA BOUNDARIES

SEPTEMBER 2017



— CEPA Area
— SUPA Area



KEY

- Existing mining
- Planned mining for this month

This information prepared 4 September 2017

Mine Development Plan

Published at the start of each month as required by Condition 22a of the Correnso Underground Conditions of Consent and Condition 14a of the Slevin Underground Conditions of Consent.

0800 WAIHIGOLD (0800 924 444)

