

## Latest News

### CEPA/SUPA six monthly meeting.

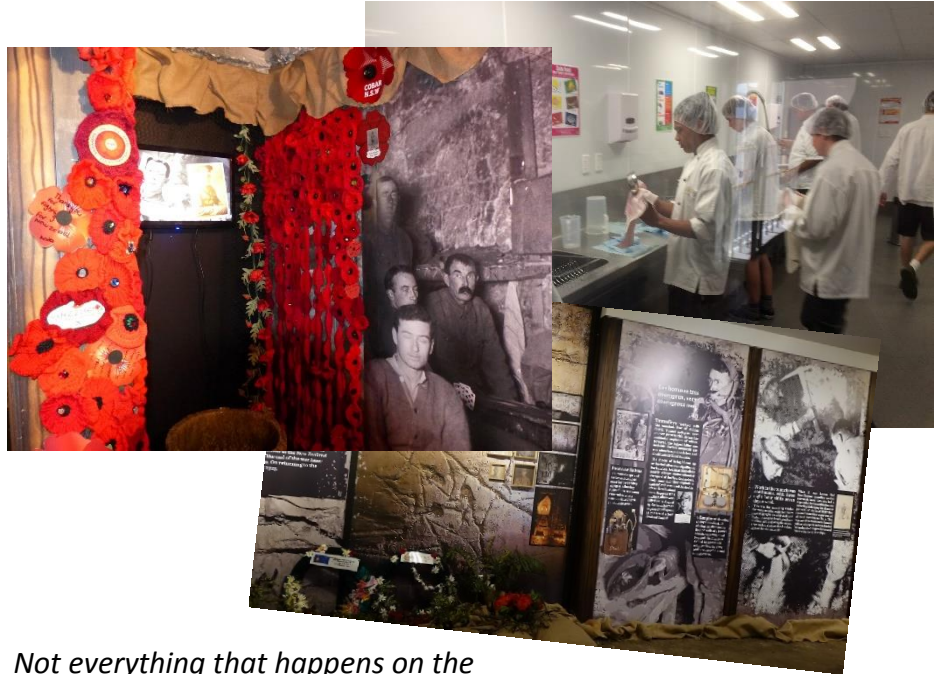
The regular six-monthly community meeting was held at the Education Centre on 27 September. Minutes and an audio recording will be available shortly. We will email those people on our distribution list to advise when these can be downloaded. There was some discussion that attendees at the North Wall residents meeting a few months ago got scones with jam and cream, while Correnso meetings only see biscuits on the table. We have taken this comment on board and will provide scones at the March 2018 Correnso meeting ☺

### Khaki Miners open to the public during Goldfest



The Khaki Miners display will be open to the public on Wednesdays and Fridays at 10.00am during the two weeks of GoldFest. Children accompanied by an adult are invited to join in a range of activities upstairs in the Underground Experience and then downstairs in the new facility. Each session will run for 45-60 minutes and is suitable for all ages. Admission is free.

## Community partnerships



*Not everything that happens on the mine site is about mining. Being as close to town as we are, quite a bit of what we do involves our local community.*

An industrial food grade preparation facility may not look like any part of the mine site you were aware of, but it's here, and fully operational. Housed in the ex NJS area of the company's Moresby Avenue Administration Building, the facility is a joint venture between Waihi College, Pacific Coast Training Institute (PCTI), and OceanaGold Waihi. We provided the space for PCTI to build a kitchen and classroom facility. Waihi College students are there each Wednesday. When the photo above right was taken, students from Tauranga Boys' College were there for the day. The focus of the course is on providing practical training and a pathway to future employment for students who do not intend to go to university.

The company has also provided space for local group Waihi Heritage Vision to establish a permanent home for the *Khaki Miners* World War One Tunnelling Company display. Housed in the basement of the Education Centre next to the big yellow truck on Moresby Avenue, the facility will be part of the programme offered to the 6,500 students who visit the Ed. Centre each year. Check out the sidebar on the left for public opening times during GoldFest.

### Contact us:

Donna Fisher, Company Liaison Officer  
0800 WAIHIGOLD (0800 924 444)

## It's electric: the EV LV

Recently an electric LV (Light Vehicle) headed underground on a demonstration run. The EVLV has a maximum on road speed of 130 km/h. Off road it can manage a continuous 35 km/h and has a climb angle of 45 degrees.

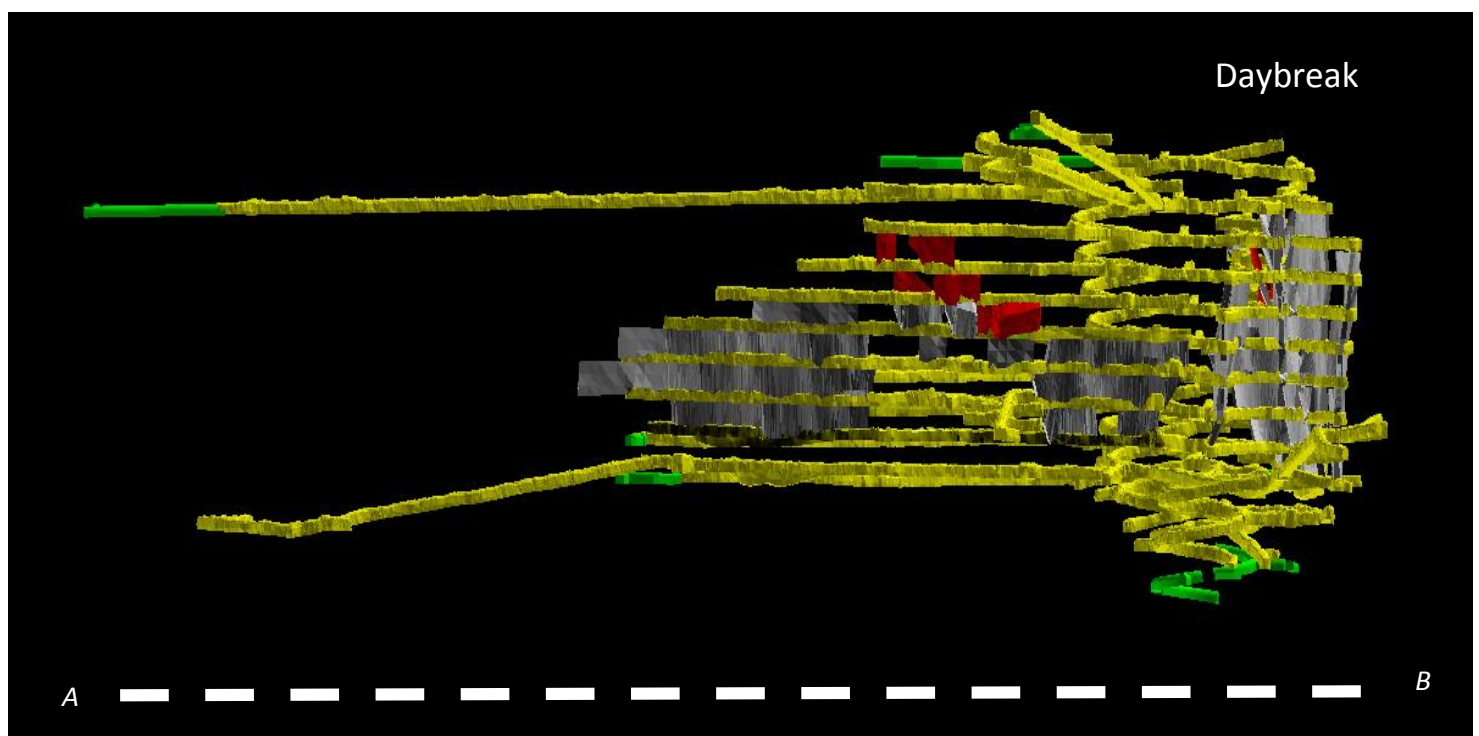
Like all electric vehicles, driving range is comparatively short. With this LV you could expect 150 km on road and 100 km off road. Charging is a quick 60 minutes, while the battery is claimed to last 8000 hours. There's a weight advantage with an EV LV. This machine weighs about 150kg less than a comparable diesel engine ute.

You can't see most of the innovations as they are hidden underneath the conventional Toyota exterior; for example, this machine has no direct mechanical connection between the steering wheel and the front wheels. The steering is 'fly by wire'. Add an app and it has the potential to be autonomous. It could drive itself.

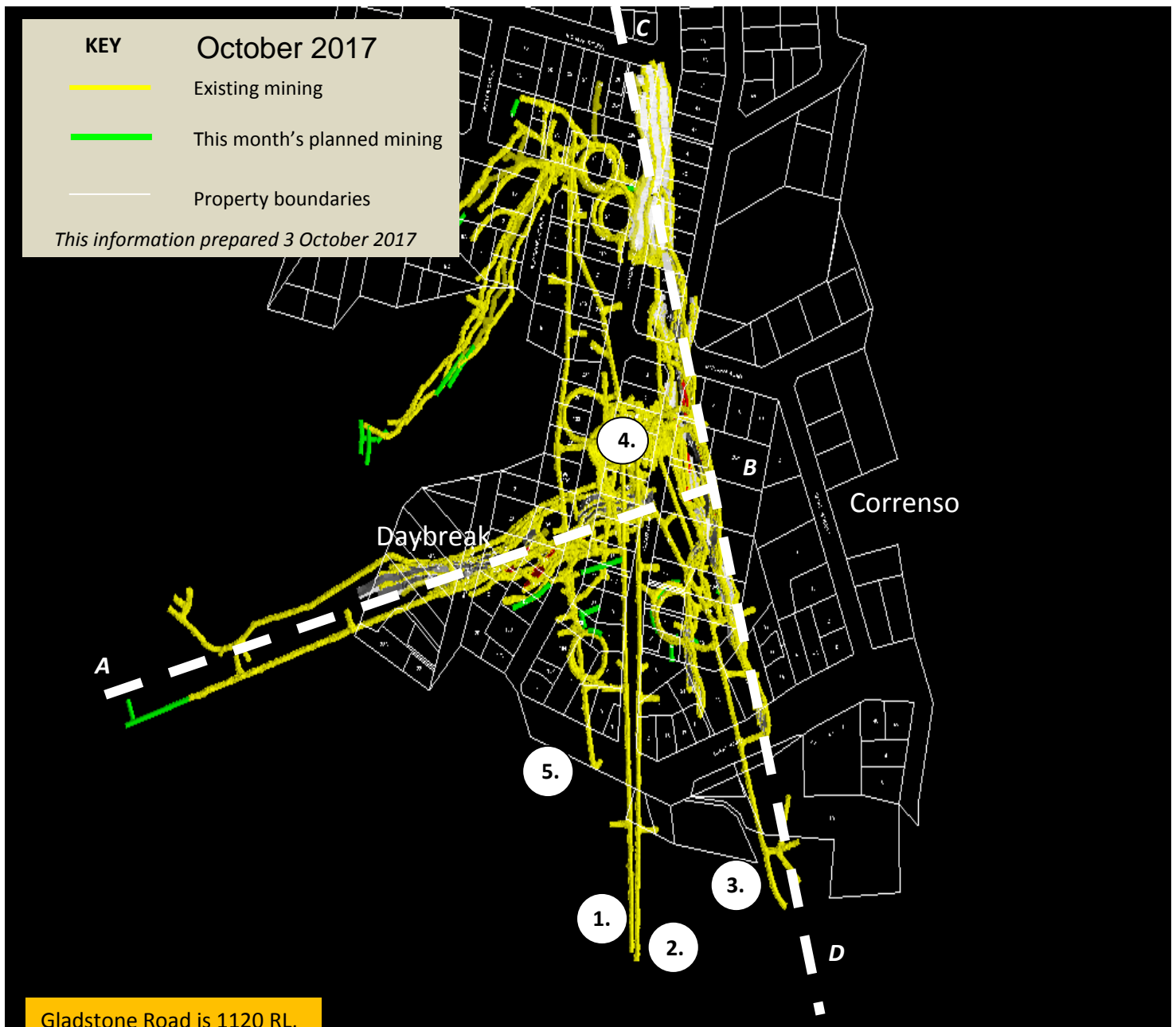
The capital cost of each unit is about double that of a conventional diesel powered LV, so it may not happen any time soon, but the consensus is that EVs will one day become the equipment of choice in the mining industry of the future.



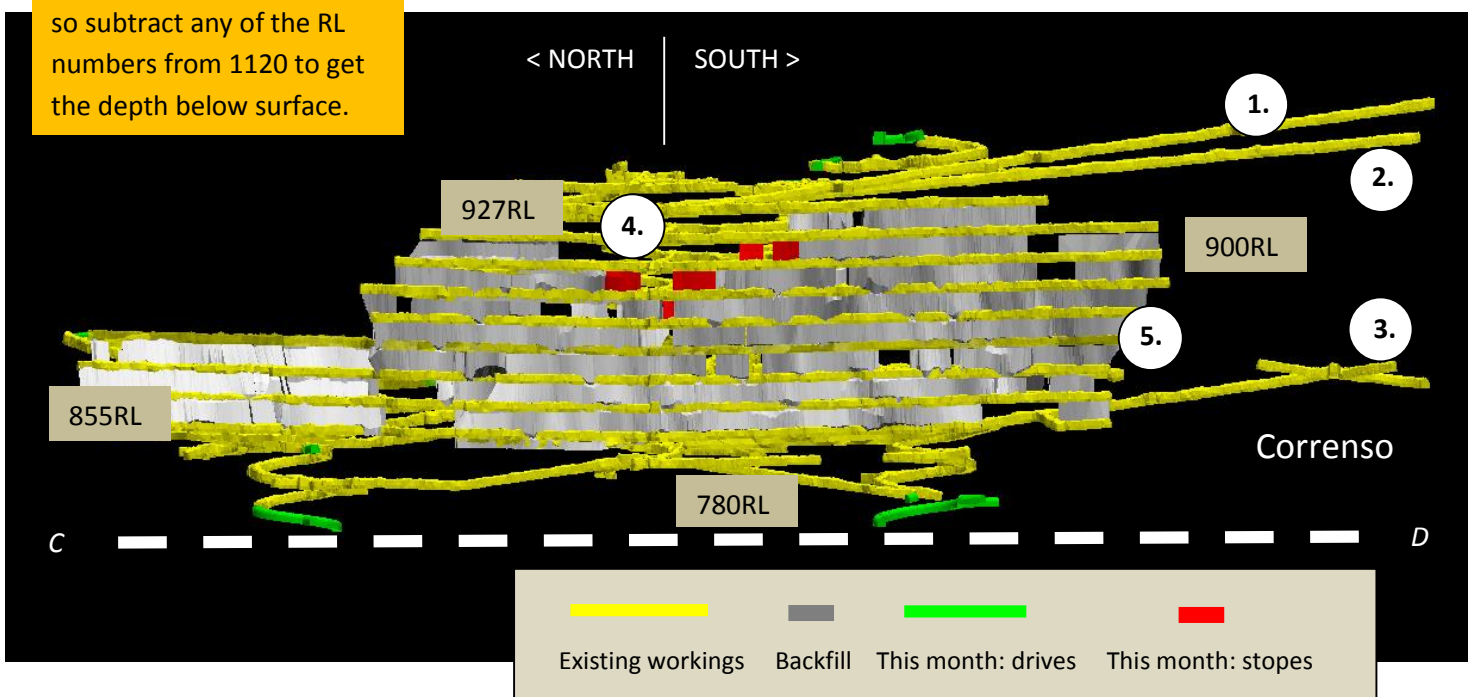
*The graphic below is a cross section through the underground workings on the dotted line A-B shown on page three. The Correnso cross section follows line C-D.*







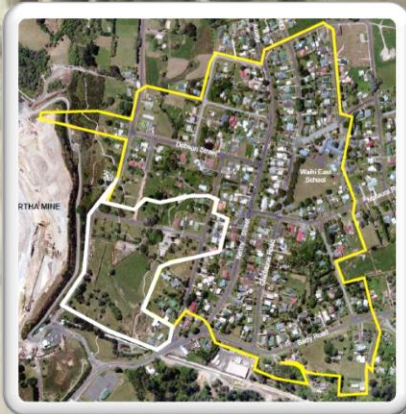
Gladstone Road is 1120 RL, so subtract any of the RL numbers from 1120 to get the depth below surface.



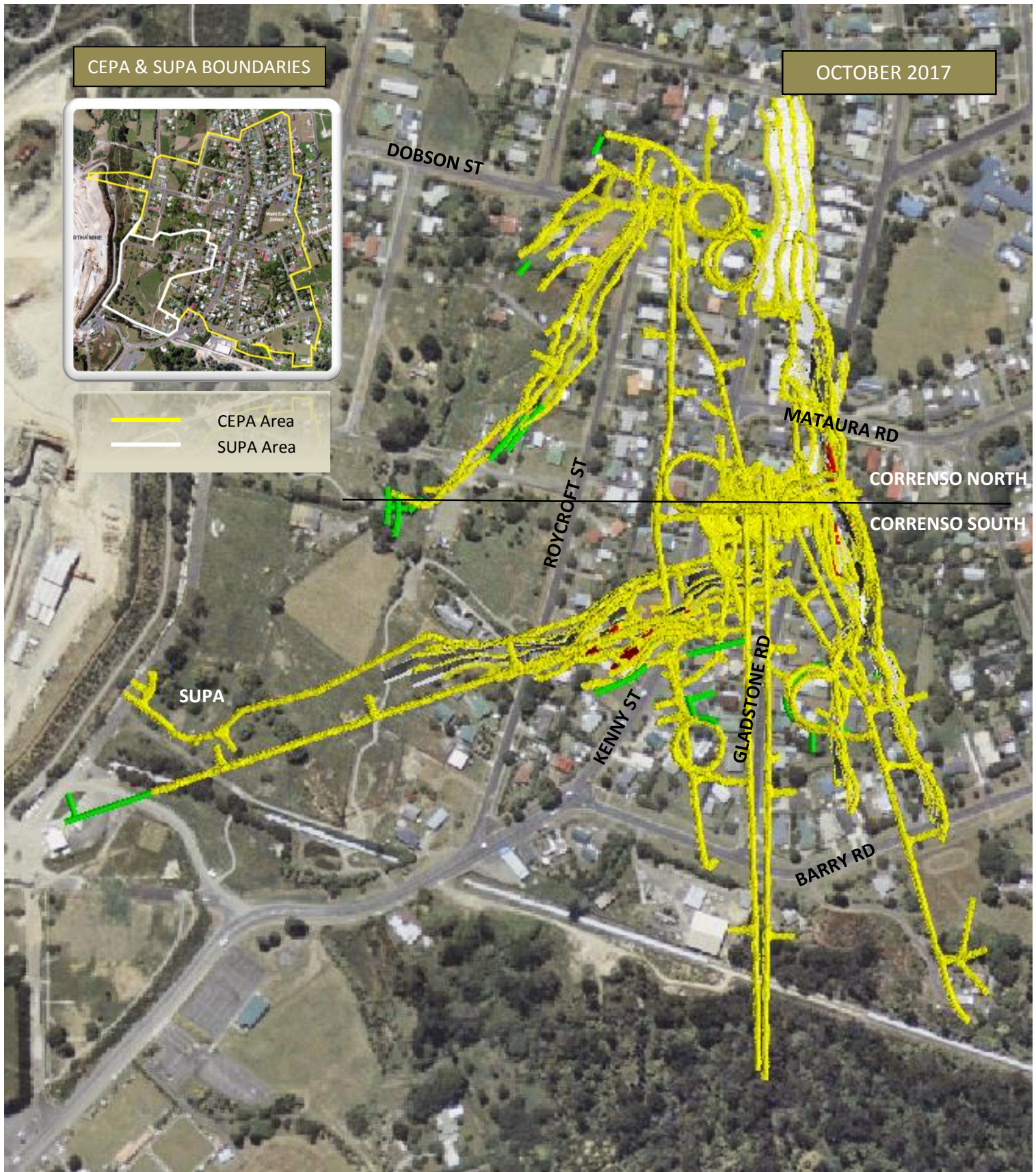


CEPA & SUPA BOUNDARIES

OCTOBER 2017



— CEPA Area  
— SUPA Area



#### KEY

- Existing mining
- Planned mining for this month

*This information prepared 3 October 2017*

## Mine Development Plan

Published at the start of each month as required by Condition 22a of the Correnso Underground Conditions of Consent and Condition 14a of the Slevin Underground Conditions of Consent.

**0800 WAIHIGOLD (0800 924 444)**

