

Latest News

Sponsorships & donations

We regularly provide funds and in kind assistance to local schools, groups and organisations, as well as individuals. We receive applications in writing and our donations and sponsorship committee considers these towards the end of each month. It helps us if applications are received by the middle of each month.

There is a list of criteria that applicants must meet if we are to consider helping. You can find these on our website under the 'Community' button.



To make things easier for people who wish to apply we have put a form on our website. This will provide a prompt for the sort of information we require. You can access the form here: www.waihigold.co.nz/wp-content/uploads/2016/02/Donation-Application-Form-2017.pdf

Last year we provided \$260,000 to schools, groups and individuals. We are pleased to be able to help.

We remember



All photos this page courtesy Jason Urlich

On Sunday 30 July OceanaGold staff joined with members of the Waihi Volunteer Fire Brigade, St John Ambulance, Maori Wardens, Waihi Community Marae, and members of the community to remember Tipiwaiti Stainton, Doug Pourau, Nick Moncur and Jim Murray who died in mining accidents since modern mining began. Special guests were the families and friends of those we have lost.

The event was held at the Miners' Reflective Area at Gilmour Reserve. Plaques were dedicated for each of the men. This area now features the Miners' Reflective Seat, and avenue of plaques for the Pike River 29, and the Tunnellers' Memorial. The new carpark at the George Street entrance to the reserve is a welcome addition to this area.

Thanks to Hauraki District Council for their assistance with installing the plaques and preparing the area for this event.



Contact us:

Donna Fisher, Company Liaison Officer
0800 WAIHIGOLD (0800 924 444)

Reporting on our performance

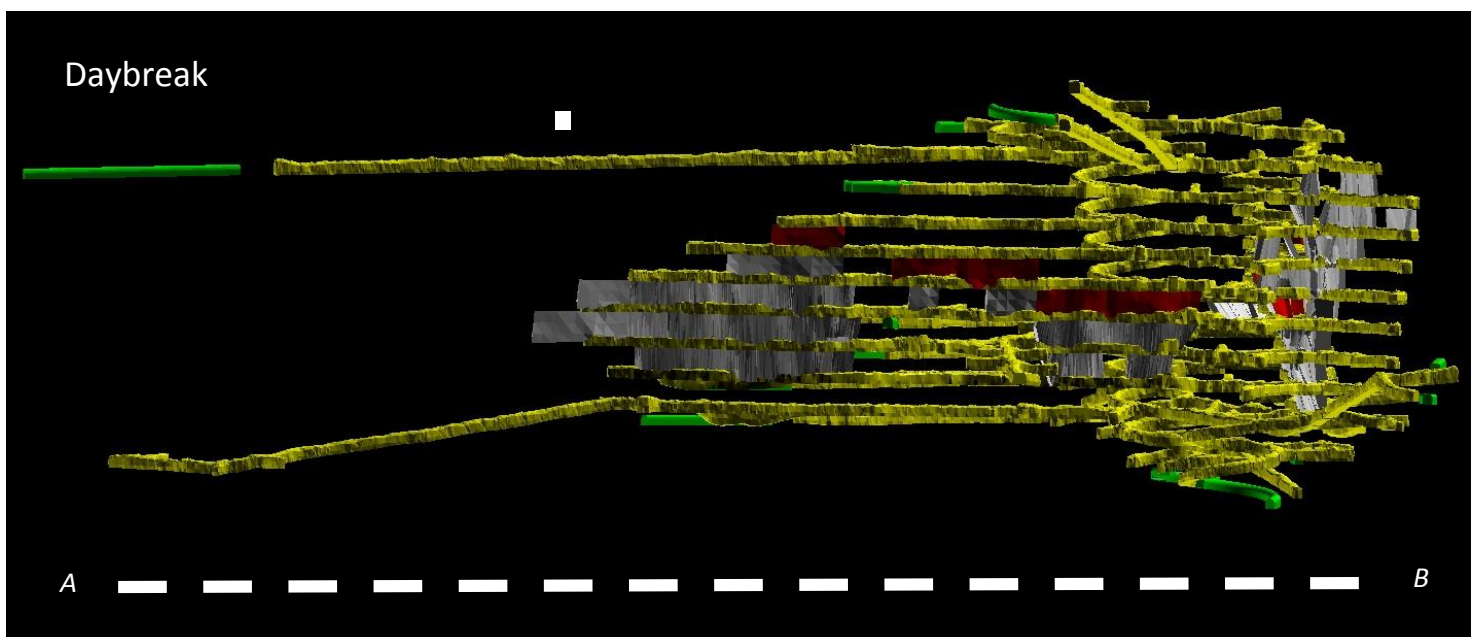


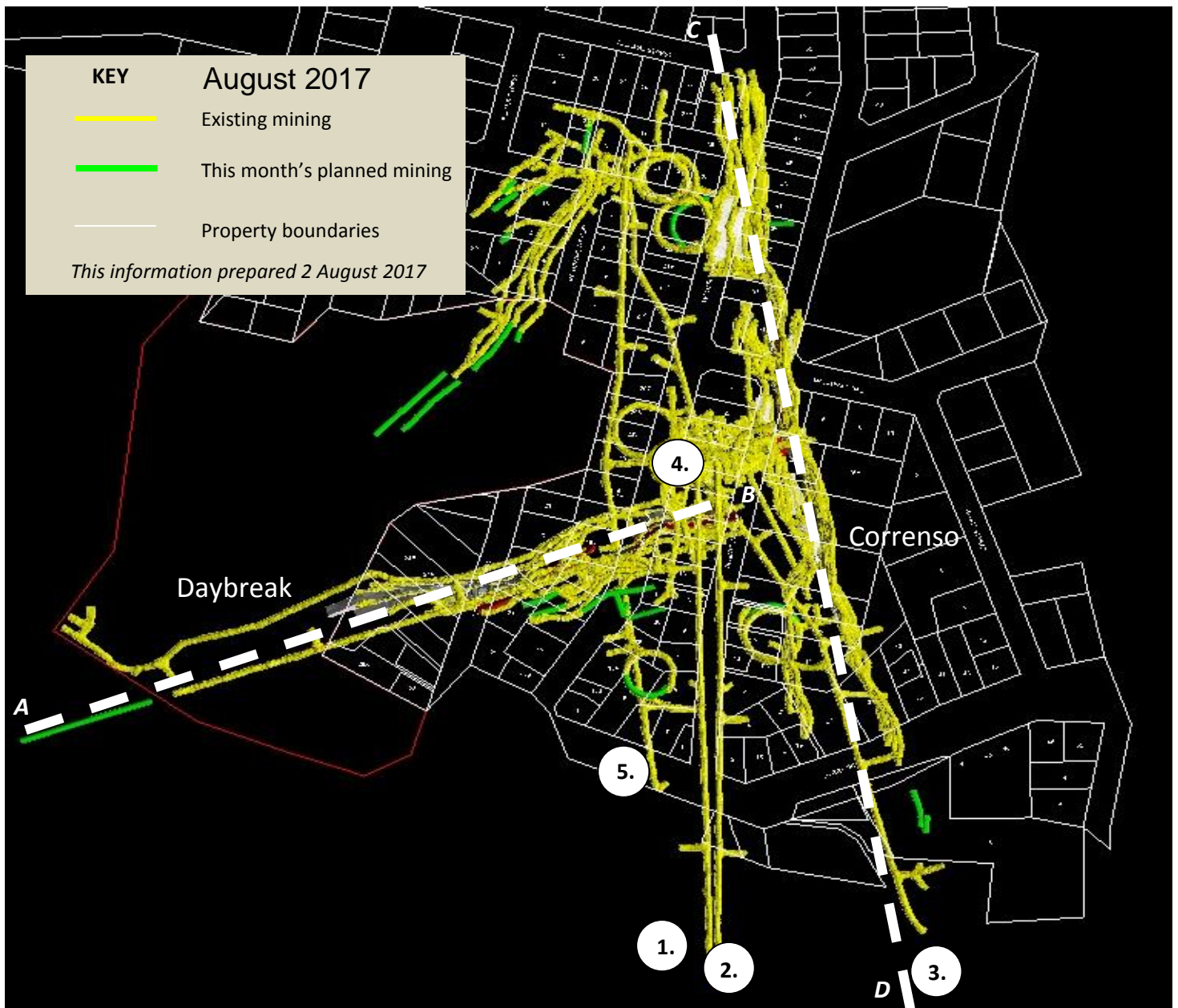
The **OceanaGold Sustainability Report** and the **2017 Fact Book** have both recently been published. The Sustainability Report is an 80-page document which details OceanaGold's operation in New Zealand, the Philippines and the United States. The booklet provides case studies and data from each site, covering topics such as Health, Safety and Environmental performance, contributions to local economies and engaging with local communities.

The 2017 Fact Book provides more in depth data and information on each OceanaGold site.

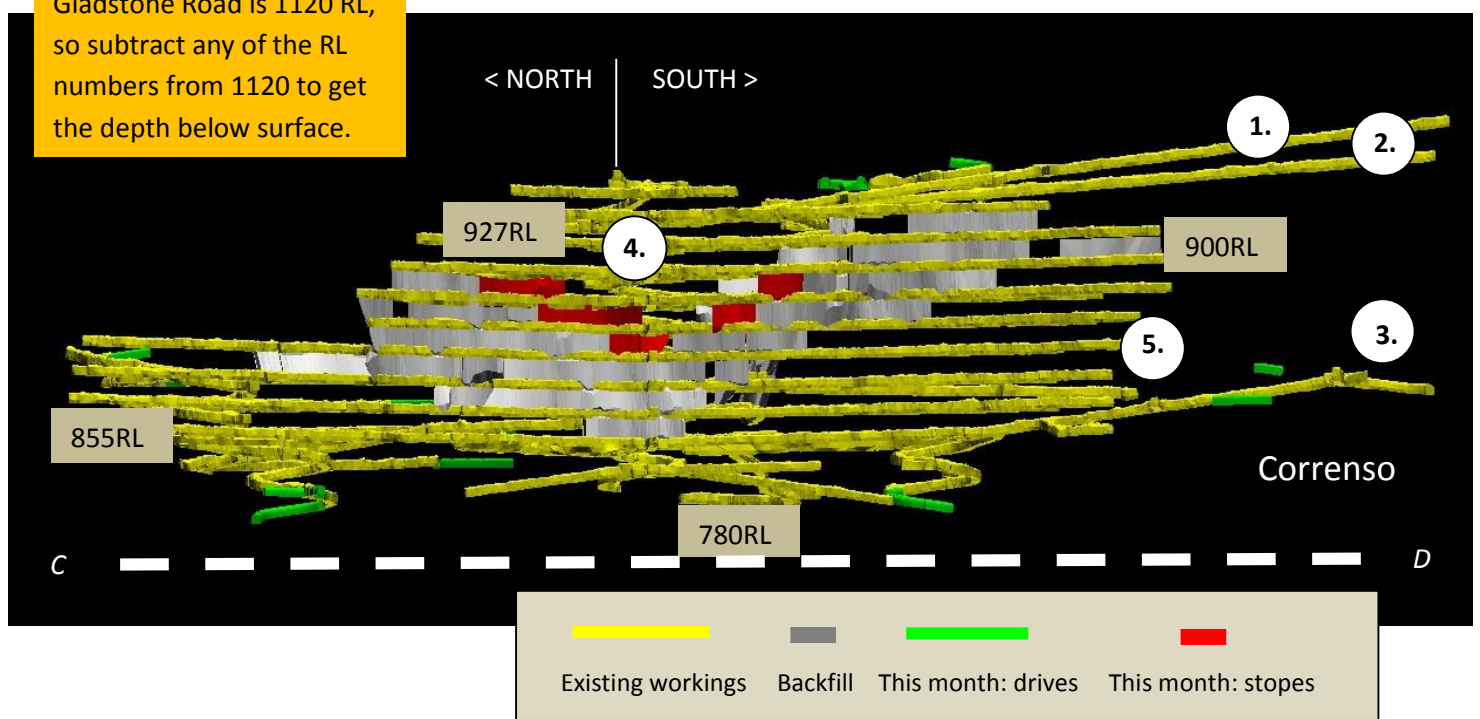
Both documents are available in electronic form on our corporate website www.oceanagold.com
Print copies are available from our administration office at Moresby Avenue.

We've added the Daybreak workings to our monthly mine plans. The graphic below is a cross section through the underground workings on the dotted line A-B shown on the page three. The Correnso cross section follows line C-D.



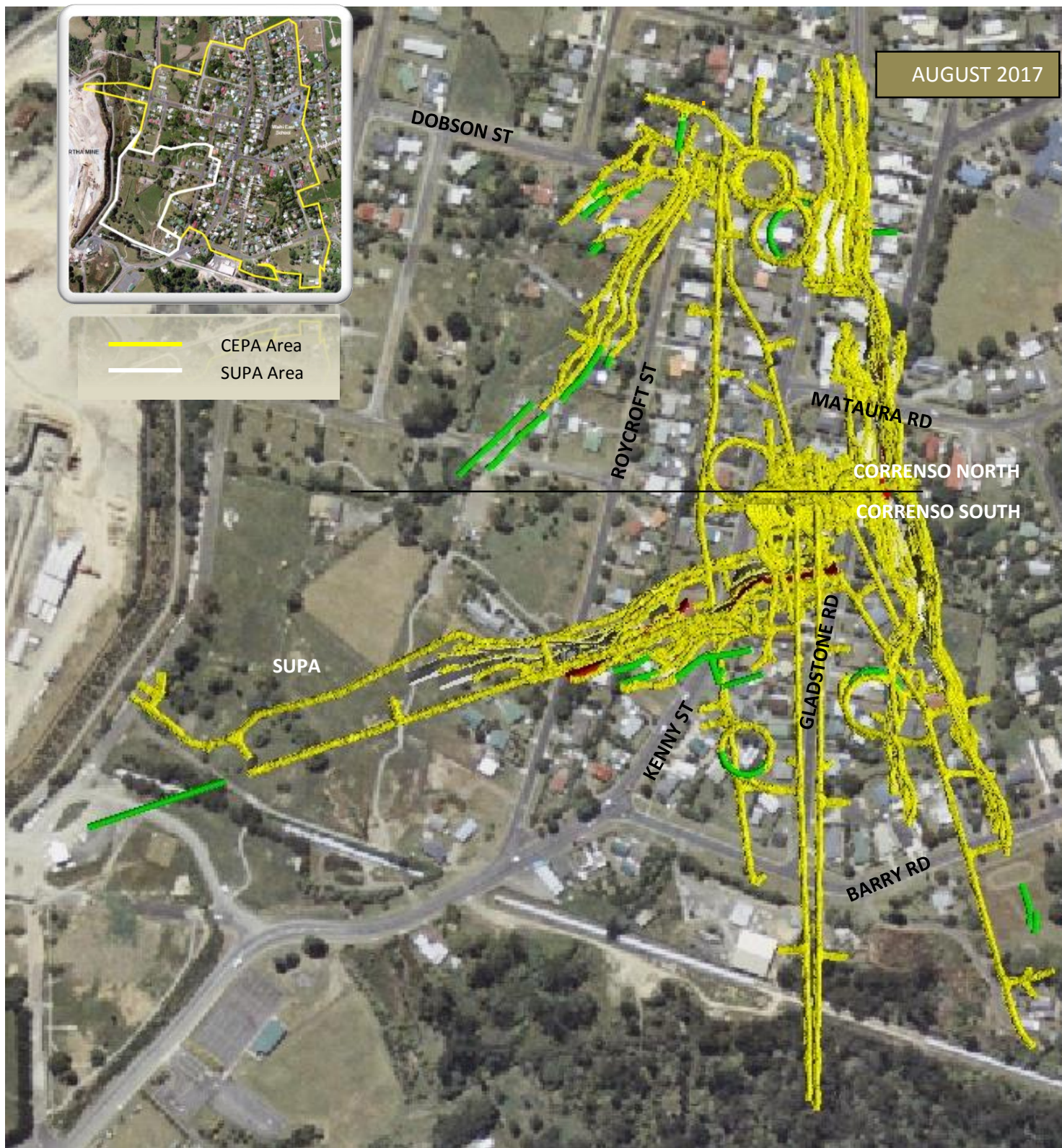


Gladstone Road is 1120 RL, so subtract any of the RL numbers from 1120 to get the depth below surface.



CEPA & SUPA BOUNDARIES

AUGUST 2017



KEY

- Existing mining
- Planned mining for this month

This information prepared 2 August 2017

Mine Development Plan

Published at the start of each month as required by Condition 22a of the Corrensen Underground Conditions of Consent and Condition 14a of the Slevin Underground Conditions of Consent.

0800 WAIHIGOLD (0800 924 444)