

Slevin Underground Project Area – Community Meeting

Monday 21 November 2016

The following is a record of the Slevin Underground Project Area Community meeting held at 12pm on 21 November 2016. Where possible, we have tried to capture individual contributions at the meeting but these do not purport to be verbatim notes. Printed copies of these notes, and a compact disc (CD), for those who would like to listen to the actual discussion at the meeting, are available from the i-Site, the Gold Discovery Centre, HDC Service Centre at the Library, and Oceana Gold office. The minutes are also emailed to attendees (or as Kit explained, the minutes from the last CEPA meeting were too big to email so a link was sent to people so they could download them from the Website). The minutes are available two weeks from the date of the meeting.

Tim welcomed everyone and noted that this is the first community meeting around the SUPA project. This meeting is required to be held in the first month. The next meeting will be held in conjunction with the next CEPA meeting in March 2017. Tim then introduced Louise Fielden the independent secretary. Louise has been working for Tim for 5 years as PA and Case Manager.

Project overview

Purpose of meeting



Under Condition 32 of the SUPA consents we are required to hold a community meeting 'within one month of the first exercise of this consent'.

Meetings are then required to be held every six months.

Future Correnso and SUPA community meetings will be held together.

The next meeting will be March 2017.

The meeting must be chaired by an independent chairman and the minuted by an independent minute taker.

Kit said: This should be a comparatively short meeting because we don't actually have that much to say because we haven't started SUPA yet. The consent conditions say that within a month of starting we have to have a meeting. We are then required to have a meeting every six months and it makes sense to have the SUPA meeting and the Correnso meeting at the same time because you are the same people. The next meeting will be in March 2017 and by that time of course we will have things to talk about and explain what we've been doing. We have the same conditions, the meeting has to be chaired by an independent chairperson and minuted by an independent minute taker and this is the first time with Louise who has been approved by Council as an independent minute taker.

Purpose of meeting



The consent states that the purpose of the meeting is to:

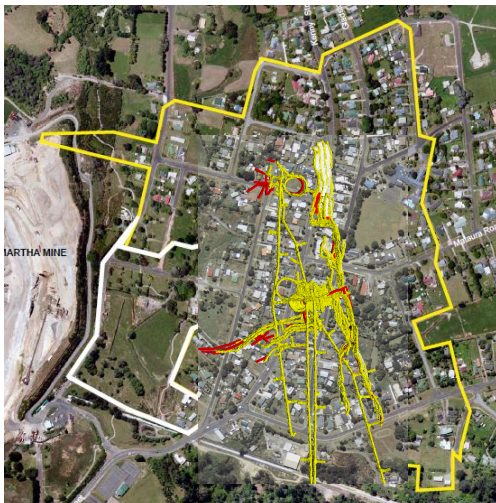
- a) Present information from the preceding six months on the following:
 - i. A description of the mining activities provided for under this consent that have been undertaken;
 - ii. A summary of relevant environmental results;
 - iii. Progress with the IRP property purchase programme;
 - iv. Progress on any matters raised at the preceding meeting;
- b) Receive feedback from the meeting attendees on the consent holder's activities and progress on the matters listed above.

3

Respect • Integrity • Teamwork • Innovation • Action • Accountability

This Slide shows what we're supposed to do in the meetings – a description of mining activities, right now we aren't mining but I'll explain to you where we're going, a summary of relevant environmental results, we haven't done anything yet so we don't have any results, progress with IRP and I'm going to show you exactly the same slide that I showed you at the September CEPA meeting because nothing has changed, and progress on any matters arising. We haven't had a preceding meeting but if you've got something you want to talk about that's fine and of course if you have any feedback we're more than happy to talk about that.

Slevin Underground Project Area



- » Area between Correnso and open pit
- » Most of the land owned by OceanaGold
- » Owners/occupiers of private properties have agreed to the project
- » Was processed non notified
- » Similar conditions as CEPA
- » Accessed from Correnso workings
- » No 'surface expression'
- » Scheduled start late 2016

4

Respect • Integrity • Teamwork • Innovation • Action • Accountability

The outline in yellow is Correnso. The outline in white is the SUPA area. As I explained at the last CEPA meeting we already owned about half of the SUPA area and we talked to the people who owned the residential properties in the area and they were going to sell to us which meant that they were moving out. This meant we were able to apply for a non-notified consent. That was consented by council on 21 October 2016. So we are heading into SUPA, we're in this area because we've found something of interest here. So that boundary (between CEPA and SUPA) will pretty much, for all intents and purposes, disappear.

Donna said: Can you point out where Roycroft Street is?

Kit said: Roycroft Street is here and Kenney Street is here.

Tim said: So Roycroft Street heads up into the SUPA area and Slevin heads west?

Kit said: Yes and that's the area where people walk through and will know well as it's the Slevin Park area. You can see why we're heading that way when you see this, so we've found something here.

Tim said: What are the red lines Kit?

Kit said: This is the map that people will be familiar with as it goes in the Eastender once a month. The red lines are this month's work. The yellow indicates work already done, the white is backfill. We've started showing backfill on these maps and the red is what's happening at this time. Probably the thing that most people haven't realised is that we've now got more than one spiral decline. There's this one which is Main Central (Mataura Rd / Gladstone Rd) and one at Dobson Street intersection.

Complaints procedure



Condition 45 requires us to communicate our complaints procedure if there are any new procedures.

The complaints procedure remains the same.



Kit said: The other thing we have to re-explain is our complaints procedure. Donna is the company liaison officer and you can get hold of her by ringing 0800 WaihiGold (0800 924 444) between 9am and 4pm. If you ring outside that time you will go to an answerphone, or if you don't want to leave a message because it's urgent then you will go to the gatehouse at Kenney St. If it is urgent they will contact whoever has the phone at that time. If you are outside that 9am to 4pm time you are here, you ring us. If your call doesn't require an immediate response, ie if it's something like a tree needing chopping down, you can leave a message, Donna picks it up and we respond. But if it's something like, "A tree is starting to fall down onto my house right now and I need some help", and it's outside the 9am to 4pm time and an immediate response is requested then it gets answered.

Why do we not answer the phone 24 hours a day? Because for those of us who have the phone at weekends or at night time we get a number of crank calls and it got to the stage that we were losing a ridiculous amount of sleep. We noticed that we got more crank calls during school holiday time. Sometimes people would ring at 11 o'clock at night to tell us that a tree needs to come down in the next 6 months. So it's not that we don't want to hear from you, it's just that some of us have a life as well. You will always get through to us if you need to.

Tim said: So Kit what's the mechanism? If someone is going to leave a message do they get given the option to leave a message, or push a button?

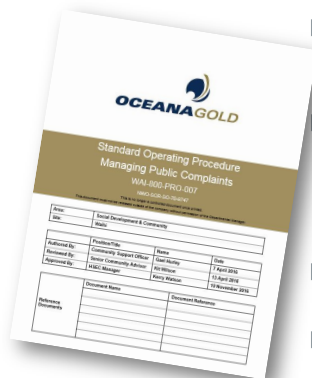
Kit said: Yes, you get to listen to me say, "You've reached the 0800 line" and basically what I tell people is if it's urgent then ring the gatehouse, press 1, and if it's not then leave us a message. Donna gets to work at 7am and I get to work at 7.30am. The first thing Donna says to me after "good morning" is, "We've had this number of calls, or complaints". That's the first thing that happens and then we take that to the management meeting at 8.30am. It may feel sometimes as though we're not paying any attention to people but we are.

So Donna picks up her messages at 7am, we talk about them at 7.30am or at the very latest 8am, the managers get them at 8.30am if it's something the managers need to deal with.

Complaints SOP



PURPOSE



- ▶ To ensure public complaints are managed in a sensitive, timely and consistent manner and to identify corrective actions where appropriate
- ▶ To ensure compliance with Martha Mine Extended Project Resource Consents and Conditions, Hauraki District Council 3.4(a)(g), Waikato Regional Council 13.0 Schedule 1, 7.0, and Mining Licence (ML 32 2388).
- ▶ To ensure compliance with Correnso Underground Mine Conditions of Consent 80-83.
- ▶ To ensure compliance with Slevin Underground Project Area (SUPA) Conditions of Consent 41-45.

6

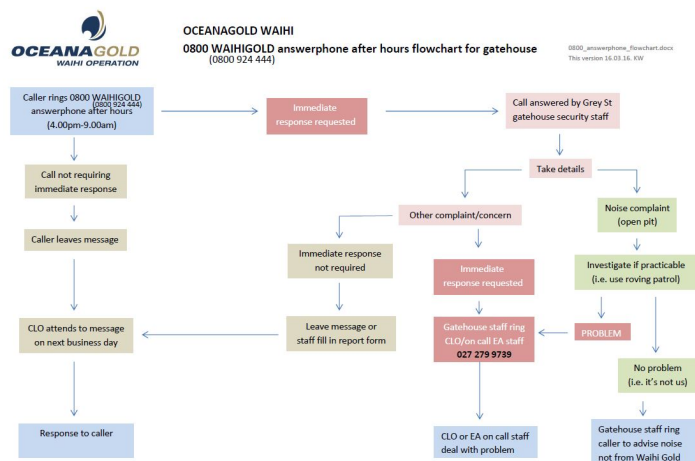
Respect • Integrity • Teamwork • Innovation • Action • Accountability

We have a standard operating procedure. Mark (Buttimore – HDC) and I have been corresponding about this procedure recently. This procedure is designed to ensure compliance with those consent conditions. I'm not going to bore you with this as it is about 10-12 pages long but it basically explains everything we have to do. Everything we do on site has a standard operating procedure. This is one of those things.

Tim said: In terms of the consent conditions and the complaints procedure are there any questions?

There were no answers from those present.

Complaints procedure



7

Respect • Integrity • Teamwork • Innovation • Action • Accountability

Kit said: I think the three folks that are here would ring us straight away anyway. Or maybe not even go through the 0800 WaihiGold number, just ring us. You've probably got one of our other numbers.

Eric S said: Don't need it.

Independent Review Panel



IRP Property Purchases (as at April 2016)

- 14 applications received by WCF that were assessed by Independent Review Panel.
- 6 properties sold during the process – several of these with top-up and withdrew from the IRP process.
- Remaining 8 were reviewed by OGC and 5 were accepted. Of these 5, 3 settled and 2 no longer wished to proceed so withdrew from the process.
- Budget remaining: approx. \$2m

8

Respect • Integrity • Teamwork • Innovation • Action • Accountability

Kit said: I've got nothing to report because nothing has changed or happened. This is the same slide that I showed in September. Donna is there anything we can say about what's happening with the Community Forum and IRP?

Donna said: With the IRP we're holding off doing another round because properties are going on the market and selling within three or four days. So we're actually holding off because we only have a limited budget for IRP purchases that has to last for the entirety of the whole Correnso project so we are holding onto those funds until either the market drops again and people want to get out or there's any new projects coming up that may require some more purchases. But at the moment there's quite an in-depth study on the property market in Waihi and the property market in Waihi is really, really good at the moment and so there isn't really the need. 14 people last time applied and from the time they applied to the time that the IRP got together to discuss who would be purchased six properties sold on their own and of the eight that they reviewed five were accepted and three settled and then two people withdrew anyway so at the moment that's what's happening with the IRP. Nothing for now.

Kit said: It would be fair to say that when we first started IRP it was because the Waihi property market was somewhat depressed and there were people who, for whatever reason, wanted to get out and couldn't. But what we're finding now, and Doug Saunders from Telfer Young has shown us that there is no problem selling properties at the present time. It's not that we don't want to do it but the need hasn't been there.

Donna said: And the only other thing with the Community Forum is that we have \$150K left in the Streets Ahead Fund and we're now calling for members of the public to put forward their ideas for this. We've also developed a form that you can get off the Community Forum website and you can make a suggestion with that form. Don't just come up with an idea, there's a list of things you need to investigate before putting your form in and just do a little bit of work on your ideas. We've had probably four or five ideas that we're now going to break off into groups and investigate the feasibility of those ideas. So watch this space because we only have \$150K left we're thinking of maybe getting a project going that we can apply for external funding from, for example, the Lotteries Commission, maybe dovetail other community projects but it is obviously all based in the east end of town, the money won't be spent anywhere else. So if you have any ideas go to the website and read through the criteria.

Tim said: Thanks Donna.

Kit said: I've actually been to the last two forum meetings, and it's not part of what I do but I've been because other people haven't been available, and they are remarkably enthusiastic, busy, energetic people who are looking for ideas. And they're just hanging out to be shown the next amazing ideas so they can get stuck in and do something.

Donna said: The only other thing I should mention is that Anne Marie Spicer was our chairman but as you probably all know she's been elected as a ward councillor for Waihi so because of that she has had to step down from her chairman role because she was a community representative so she's stepped down and we're now filling the role of one of the two HDC people on the Community Forum so her, with Max McLean, are the two council representatives and we've elected a new chairman and that lady's name is Belinda Bourke and she will be really good as she is a very good community member, she's very active, she was instrumental in getting the playground done at the school out of the Streets Ahead Fund. We've just elected two new on the Community Forum but I can't announce who they are yet because we have only just had the election but they are good people.

Tim said: So there's five in total?

Donna said: Yes there's two Oceana Gold representatives which are myself and Kerry Watson (and Kit when Kerry can't attend) and the two council representatives (Max and Anne Marie) and the rest are community and one, Bavesh Ranshod, who is from the outer Waihi area and we have a co-ordinator.

Kit said: The other thing is and Donna's has referred to it, there is \$150K that needs to be spent. I've looked at the diverse range of suggestions and there's no doubt that some people are going to be disappointed that their one suggestion didn't happen but there's a whole load of stuff that needs some serious consideration. If you look at our website, take the time to have a look at the Forum website as well www.waihicommunityforum.co.nz.

So no change at all in IRP but maybe in March 2017, but if the property market stays the same we won't have much to say then.

Communications

Communications

9
Respect • Integrity • Teamwork • Innovation • Action • Accountability

Kit said: We've run into trouble with the distribution of the Eastender. We will deal with that, Jeanine will find out why some people are missing that. And we have the Update that appears in the Waihi Leader.

If I could just very briefly explain the CSAMT and the gravity surveys (covered in the last Update) because although we're doing that predominantly within Waihi east there will be gravity surveys at this end of town as well. So the CSAMT, all that happens is we run 100m long pieces of wire down the road frontage between the footpath and road and we have what look pretty much like coffee cups with terminals on the top of them and then a couple of kilometres away out in the farmland on the other side of town out in the rural area we put a couple of electrodes in the ground and we zap those electrodes and we pick up the signal at this end on the wires with the little receivers and all that does is it tells us by the speed with which that electric current comes from outside of town to here, the resistivity of the rock which tells us how dense the rock is which then allows us to make educated guesses about what sort of rock it might be which then allows us to determine what if anything else we are going to do. If you add that to gravity surveys, now gravity we tend to think of as

constant but it turns out it's not. Gravity has very minute variations so the gravity on the top of Everest is different to the gravity at the bottom of the Marianas Trench. The gravity here is different apparently to the gravity on the top of Mount Te Aroha just by a tiny fraction which you and I would never notice. If you want to lose weight I can tell you the places to go to to get measured. And the way we measure it is really simple - it's just a box very much like a car battery with a couple of terminals on the top and a couple of dials and bits and pieces and inside there is the most sensitive spring in the world with a weight on it. All they do is let the spring go and they measure how fast the spring goes and how it accelerates and how long it extends. And so what will happen is there will be people, there could be one standing outside your house, with a box. They put it on the ground and they'll stare at it for 45 minutes or so and twiddle a few dials and move on and it's because they're measuring gravity at your place and then moving on. Between CSAMT and gravity that then gives us an understanding of the sort of rock that we've got underground which again allows us to determine whether it's worth having another look and if you've got your update from the Waihi Leader you will have seen there's a little map which is not contours it's colours, and in this case it goes from the cold purple colours right through to the hot reds, and that then allows us to determine "where to from here". But we'll fix the problem with the Eastender.

Tim said: So the problem with the Eastender is the physical delivery, is that right?

Kit said: Yes. We deliberately hand out the Eastender as in we now print 700 copies, of which we distribute 650 of them because people have said they prefer them in their letterbox to seeing them online and I understand that. But what we're finding is every now and then we have a hiccup and the hiccup in this particular case is some people have missed out on the most recent Eastender which would have gone out two weeks ago and that's a problem that we will deal with. It's always going to be online but I understand why people prefer to hold it in their hand and we'll continue to deliver it and figure out what the problem is and see where we go from here.

Tim said: Do the CSAMT and the gravity survey mean Oceanagold is looking to do more underground mining in the east of Waihi?

Kit said: Or it could mean looking to do no mining because it depends on what we find from here. When we get that map and it shows us what sort of rocks are there that will then allow us to say, "Well there's not point going there" or, "It's worth a sniff", or, "Maybe we should think about putting a rig there". This is just one tool in the arsenal that we have. Some of you may remember a few years ago we actually flew a helicopter over the town with something that looked like a big inverted clothes line thing hanging underneath it, a similar sort of thing. So this is just one way of figuring out. It doesn't mean more mining, it could mean no more mining in that area. I should say also we aren't the only people that are doing that. Newcrest is doing the same thing back up here at the top of one of the roads up here somewhere. So it's not just us at the present time.

Tim said: Thank you Kit. Any other questions about that?

Eric Rhodes said: Don't you use that helicopter anymore?

Kit said: It's great for much bigger areas and obviously really spectacular when it flies across but this (CSAMT) allows us to refine things and it's also a lot cheaper than a helicopter.

General Questions

Helga said: There was a person digging a little hole and putting something on the side of the road in the dirt.

Russell said: Every six months Bruce Morrison brings around a crew and they have to do a settlement survey across Waihi, from the settlement mark which was probably what you saw being installed. They go from mark to mark and compare the relative elevation.

Helga said: there was also a person coming back and went from one to another.

Russell said: So they work from one to the next.

Helga said: I didn't read anything about it which is why I was wondering what they were doing.

Tim said: Helga where was that?

Helga said: In Kenney Street.

Tim said: So Russell why would they be putting in another settlement marker because there's markers there already isn't there?

Russell said: There's already a network of markers so for several reasons. One is they may find that they've got too big a range and they might want to put one in the middle and it can give better definition. But more commonly the set-up is already there and they've gone round and found one has been removed in some way. Now, lawnmowers going particularly shallow can take one out. Road works is the most common reason. The old one may have deteriorated because they are normally in concrete with a small pin. If it's broken in some way then they might have needed to replace it.

Kit said: So that's what I see on Moore Street when I go down to get my lunch. It looks more like a roofing nail, a nail with a washer on it.

Russell said: Most of them are pounded into kerbing. You'll see little sprigs.

Kit said: And the reason for that is that we have a de-watering and settlement regime that we have to adhere to and what Bruce and his team are doing is making sure that we are adhering to that because if we're not people like Mark (HDC) would certainly have something to say very quickly.

Tim said: If you sucked a whole lot of water out of the ground then the nail would go down?

Mark said: It's differential settlement you're really looking for. On our website, which I've just approved, we have the de-watering settlement plan and that has detail about the settlement markers in it.

Tim said: Excellent. Are there other questions?

Glenis said: With the SUPA being a non-notified application and approved through the Independent Commissioner but without public notification, if there was something else discovered around the Correnso area would that also be applied for as a non-notified application or would it become a public notification?

Tim said: Is that a Mark answer or an Oceana answer?

Kit said: In this particular case it was non-notified because we had approached all the property owners and they had agreed to sell therefore we were about to become the owners of all those properties therefore there was nobody who was going to complain, complain isn't the right word, about that area therefore there was no reason to do it anything other than non-notified. If there was something else that would have to be assessed on the merits of the application and the area that it was in. So it's not possible to actually answer that Glenis. It just happens that in this particular case, because we already owned half the land because it was in the Slevin Park area and the other property owners were willing to sell to us, that's how that worked so (in future) who knows?

Tim said: That's a good question Glenis. I wanted to ask, so that was all of the property owners in that area?

Donna said: Yes there were eight properties and all apart from one signed off. Seven of them sold and one had the option to sell but decided they wanted to stay. So if there had been properties like in the Correnso area where there's drives going under, I think then it would have gone as notified because those people were affected but because all the affected parties had signed off it was allowed to go through. The effects would be less than minor and also very consistent with the effects people are already feeling with Correnso.

Tim said: And the SUPA area is within the extended, or larger, CEEPA area originally and was reduced down to the CEPA area?

Kit said: Yes.

Eric Schmidt said: You have to understand what people are thinking. It is not only the mine under your house or under your property, that's not the point. You've got the vibration all around and that's why people are pissed off that they don't have a say.

Tim said: So Eric you're saying that the vibration extends beyond that area and they didn't have a say?

Eric Schmidt said: Yes.

Glenis said: I've had that same feedback.

Tim said: Kit are the requirements that you have to comply with under the consent conditions, in terms of the environmental feedback and the progress on mining, are the numbers and requirements all the same as we're used to with CEPA?

Kit said: It would be easiest to say that the consent condition for SUPA is, and correct me if I'm wrong here Mark, is almost an identical carbon copy of the Correnso consent conditions. The blast vibration requirements are the same, the reporting is the same. All the stuff that I know about that affects our team is the same. Mark you might want to correct me, is there anything that's different?

Mark said: The biggest difference this time round is the need for a void management plan because the mine's going to head into areas of old workings and old stopes and drives. There is a standard in the Worksafe area of responsibility about stand-off distances and what safety measures have to be taken. The void management plan is more focused on ground stability and making sure we don't get slumps or caves or whatever. So the company is now required to drill ahead in "rays" - so up, along, down and out to the sides - to check where the voids are and there are certain distances they have to stay off them. So that's a big difference and adds to the cost of mining.

Tim said: Thank you Mark. Other than that Mark it's pretty much the same conditions and framework?

Mark said: Yes, there were about eight separate standard operating procedures or management plans that need approval. The rehab bond needs updating, the rehab plan needs updating and I've got one approval to sign off when I get back to work and then I think the company has met all the pre-conditions.

Tim said: Right ok. So going back to your point Eric and yours Glenis, about people being pissed off that they didn't have a say because it's going to happen and they're still affected by vibration, do you agree that the numbers in terms of the metres per second of the vibration are the same? Are you saying that it's just there might be more of them because there's a bigger area of mine?

Eric Schmidt said: We don't know. We didn't mind at the moment, we will monitor.

Tim said: So Kit the criteria, the metres per second with the vibration etc all stay the same?

Kit said: Yes they do.

Tim said: Might it be the case that people experience more often vibration because of there being another area?

Kit said: I'm not really the person to offer an opinion but it's never stopped me offering an opinion. My opinion would be that because we're heading towards the pit and away from most peoples' houses it will be no different to what they experience now.

Tim said: Russell what do you think?

Russell said: Well it's the same vibration monitors, the same limits, the same number of blasts per day. They have to be at the same time as the Correnso blasts so we can't blast five minutes later. So the duration that people are exposed to vibration is no different. The biggest thing probably is that it might extend the mine life.

Tim said: Right, I read that but I can't remember how long it would be extended by?

Kit said: Well at the present time we think that we might have nine months' of work in SUPA.

Tim said: With an overlap with CEPA?

Kit said: It doesn't mean an extra separate nine months to the end of CEPA, it means that we do nine months and I'm not sure how long that would necessarily add to the mine life in total, and I doubt that people underground know that either because it depends on where they're going and how they're doing it.

Glenis said: Can I just ask does that mean those blasts in the SUPA mine are in addition to the ones in Correnso mine? Or does Correnso blast and then SUPA blast at a different time? Or do SUPA and Correnso blast at the same time? Are there more blasts?

Kit said: When you say, "When Correnso blasts" there could be three, maybe four, headings blasting at the same time, up to nine. So we don't just blast in one place at one time. We've got that blast window and we let them all off at the same time.

Russell said: 15 is the record, all within that window.

Kit said: So it just means that they will happen at the same time in the same window.

Glenis said: So does that create a bigger impact?

Russell said: We're still limited by the millimetres per second total so the engineers have to keep that in mind when they're doing their design. So there's various mitigations they can do if they have several developments headings they can actually stagger the delays so that, as people know sometimes when the development blasts go off they're bang, bang, bang, bang but if they think they might have slightly more vibration then they actually stagger it slightly so that part of the blast goes up half way in between so it sounds more like a machine gun.

Kit said: The consent conditions regarding blast vibration are the same so it just means that the area has moved slightly to the west but the consent conditions remain the same and the operation remains the same in terms of the way we do things.

Tim said: And a question on your line Glenis, so the potentially the blast could cover a wider area if it's in Correnso and in SUPA but you're saying heading towards the open pit, so people are less likely to feel it Kit?

Kit said: I'm assuming that because it's moving further away, it's not moving towards people it's coming back this way. I have no basis for that other than general knowledge.

Glenis said: Does it mean because there's more voids from old mining that that would increase an effect or decrease an effect?

Kit said: It means we've got consent conditions that give us a rolling average. I better explain this, and stop me if I get this wrong. Although the blast vibration limit is 5mm/second you can't do 20 blasts at 4.5mm/s because we have a rolling average, and Mark would soon be on our case. A rolling average is either 2 or 3mm/s. That means that if you do a 4.5mm/s you've got to do some 1mm's otherwise you don't get that rolling average. So irrespective of whether there's a void there or an old tunnel, or whatever it is, we've still got to get that rolling average based over the period of time otherwise we're in trouble. So we are constrained by the consent and that's what gave us the confidence to do this non-notified because in our world nothing has changed. The area has moved a bit but nothing's changed.

Tim said: Glenis are you coming to the vibration workshop this afternoon?

Glenis said: I don't know, it depends on work commitments.

Tim said: Because that question, about whether the voids will make more vibration or less, would be great to ask John Styles, the independent vibration expert because he's talked before about the density of the ground.

Tim asked: When are you going to start mining in the SUPA area?

Kit said: I don't know.

Tim said: Well if you don't know who does?

Kit said: The underground people know.

Tim said: Have you got a window?

Kit said: I would hope before Christmas.

Mark said: I've got to step in here and say I don't know when the company is physically going to start but once I give the approval to the Void Management Plan, which has been the most technically complex document, they are able to start when they choose. So I will have that approval through this afternoon, theoretically they could start tomorrow.

Kit said: So if you were at your office now instead of being here we could start this afternoon.

Tim said: So council sign off today and then Kit you're saying hopefully before Christmas and Jeanine you're saying it will be announced in the Eastender.

Jeanine said: Definitely because we have to put forward where we're going to be in the month coming. It'll be in red in the Eastender. I'll send you a copy.

Tim said: So it won't be before the next Eastender comes out then?

Kit said: Well the next Eastender is due out two weeks from now. It could be that it's started.

Mark said: Just for your information, council's geotechnical groundwater settlement expert is due over today from Australia and one of the things he's going to be looking at is the interface between Correnso and SUPA just to make sure everything's kosher and OK, along with about 25 other jobs he's got for us.

Donna said: And if you are one of the people that gets texts from me in the morning then I will actually say in the text if we are blasting in the SUPA area.

Tim said: Donna, so you will text people when you've started in SUPA?

Donna said: Well, those people that get the texts.

Jeanine said: Or look on our website, it will be there as well.

Russell said: You won't feel it any different. We're 6 metres away from the boundary at the moment, we'll be (working in 3 meter steps i.e.) 3 metres away, on the boundary and 3 metres past in the next three blasts so the difference in relative feel 300m away is negligible.

Helga said: Across from the rugby field there was this big area where they were drilling, it (the machinery) was all removed, but now something else has appeared.

Kit said: Yes it's back again, the same thing (exploration drilling) and they are dotting all over the place. There is one at the west of the pit, in fact it's sort of north west. There is one in Bernie's yard, which is on Martha Street. There is another one by the rugby club between the rugby club and the open pit and there are several underground. Given the choice we'd prefer to put them underground because we're already that deep, we don't need that first 150m of rock and also they can operate 24/7 and it doesn't matter what the weather's doing.

Helga said: It was my understanding from the last meeting, it was said they would disappear and we don't need it any more and now all of a sudden it appears again.

Kit said: Yes I do think I actually said that. The idea is we're looking as fast as we can to see what we can find. And so what happens is rigs often go back to the same place so it's exactly the same thing, it's a drilling rig.

North Wall

While you're here if I could briefly explain what we're going to do on the north wall. The north wall, as you probably know, is continuing to "fritter" (using the geologist's and engineer's term), with bits of material continuing to come off there. This week we'll be starting work there and what we're going to do on the piece of Bulltown Road where it sneaks across the top of the north wall there is we'll be moving all the topsoil in that area. All of that topsoil will come down closer to Bulltown Road. So the first thing we'll do is move the boundary fence out as far as we can and then we'll probably also, although we haven't figured it out yet, put some sort of geotech cloth fence up there and then we'll be making a very high bund, a 4m high topsoil bund, we'll then hydro seed that which is the spray grass, we'll then also plant it and that means we've got the topsoil there, we've got a visual barrier, it also becomes a noise bund, we'll move the clay and other bits

and pieces behind that as well which gets us down to the rock. That's going to take us about 3 weeks to do. That also involves chopping down a few trees as well. So if you travel Bulltown Road you will see things change there. Then when we get down to the rock the next part happens in terms of drilling and blasting and working on there but the idea is we're taking as much weight as we can off the top of the north wall because the more weight we take off the top the less of a problem it is. Some of that material will be put on the rom pad, that's the pad over by the crusher on the other side, some of it will be pushed over the side and the technical term for that is side casting. So that's happening now, it will start this week.

Tim said: Is the north wall going to be laid back or you don't know what it's going to end up looking like?

Kit said: We don't know. The technical reports have come through and we aren't privy to those technical reports. But the initial part is to take that weight off the top and then figure out where to from there.

Glenis said: Because you take the topsoil off and then you start going into rock will that end up being like a layback at some stage? Does that require consent?

Mark said: I'm still working on the detail of that but essentially the technical design work we haven't seen yet. We've seen the concept design that involves, as far as I can work out, taking off about 650,000 tonnes of rock. The current areas of cracking and weakness that will be improved by taking weight off are basically on the north west and north east of the failure. The technical design has to be approved by the independent peer reviewer so the sooner the company gets that design to the peer reviewer the sooner the actual blasting can be assessed. For the preparation works they very definitely can go ahead and do those within the current consent and licence conditions. For the blasting, which has more effects, they probably can go ahead in terms of the existing conditions but we are requiring Oceana to submit an assessment of effects to comfort us that they can do the works within those conditions. If they can't it potentially becomes a consent variation.

Glenis said: Where will the rock go?

Kit said: Onto the rom pad or into the pit. So either it will be moved onto the rom pad beside the crusher and we'll just put the stockpile back there that we used to have, remember when the pit was working there was a big stockpile there?

Glenis said: So if you push it into the pit will that make it harder to go back into the pit if you ever wanted to look?

Kit said: One would assume so but I'm just repeating what I've been told. I'm not sure where it would be pushed into the pit.

Glenis said: Would you be allowed to push it into the pit? I know with the slip that it's doing it naturally.

Kit said: Yes, apparently we can.

Mark said: Yes it is and it's not just pushed into the pit, there's some science to it. The more weight they get falling back against the north wall the more stable the wall will become, so it acts as a buttress. So while we think of them chucking rock into the pit, it will be slightly more technically done than that.

Meeting Process

Tim said: Kit, do you remember at the last meeting on 15 September, the CEPA meeting, we had that conversation about start time for the meeting I noticed that in the October Eastender you asked people for feedback about the start time, because we're only going to have one meeting now. Did you get any feedback?

Kit said: No and the thought is, if we don't get any feedback, we'll stay with the 2.30pm time. Also we could alternate – so we could do March at 2.30pm and September at 5.30pm/6pm, so that at least you get to one of them.

Tim said: So the next SUPA meeting will be combined with the CEPA meeting and it's likely that will be at 2.30pm in the middle of March?

Kit said: Yes and as people have figured out the only reason this one is at 11am is because we've got the vibration workshop this afternoon and it made sense to combine the two while you were in town.

There were no further questions or comments so Tim thanked all for attending and closed the meeting.

The meeting concluded at 12.00pm.

Attendance Register	
Eric Schmidt	Helga Schmidt
Eric Rhodes	Glenis Gentil
Mark Buttimore	Kit Wilson
Russell Squire	Donna Fisher
Jeanine Wiki	Danielle Crawford
Phil Salmon	
Tim Clarke	Louise Fielden