

Latest News

Blast Vibration Workshop

A reminder about the Blast Vibration Workshop which will be held at **1.00pm, Monday 21 November at the Education Centre**. If you wish to attend, but have not yet let us know, please get in touch.

Jeannine.wiki@oceanagold.com
0800 WAIHIGOLD (0800 924 444)

SUPA Meeting

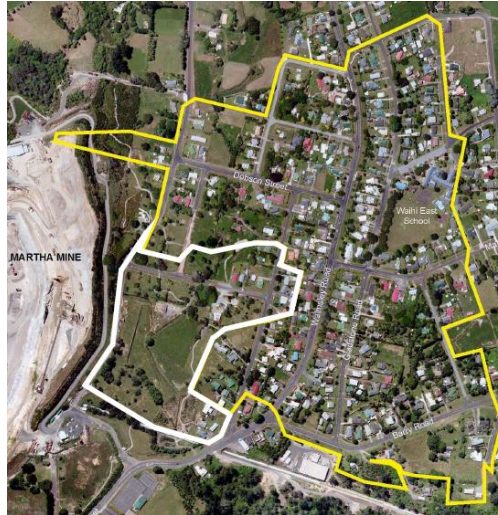
Community Consultation Meetings for SUPA will be held every six months as required by the consent conditions. These meetings will be held in conjunction with the Correnso Community Meeting, so the next one will be in March 2017.

We are required to hold the first SUPA meeting within a month of starting work. We propose to hold this at **11.00am, Monday 21 November at the Education Centre**. This is the same day as the Blast Vibration Workshop.

As this will be our first meeting there will be little in the way of mining activity in the SUPA area to report on, but for anybody interested, we can detail the consent conditions, give an indication of our mining plans for this area, and answer any questions you may have.

As usual, minutes from the meeting will be available via email, and hard copies may be picked up from the iSite and Hauraki District Council Service Centre.

Slevin Underground Project Area



Left: The white border shows the Slevin Underground Project Area (SUPA) which OceanaGold applied for consent to mine by underground methods from the existing Correnso mine.

Last month we reported that our exploration programme had identified extensions of the Daybreak, Christina and Empire veins that go beyond the current Correnso consent boundary. These extensions are located to the west of the Correnso mine between the current workings and the Martha open pit, shown in white above. It is anticipated that this will add approximately nine months to our current mine life.

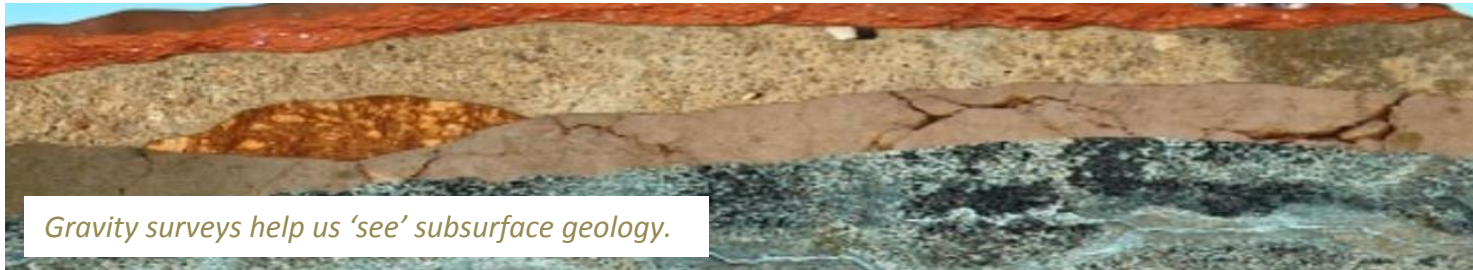
We applied to have the consent to mine this area considered 'non notified' by the Independent Commissioner appointed by Hauraki District Council as all of the directly affected parties (those immediately above the proposed activities) had agreed to the proposal. The Independent Commissioner agreed to this request, and after considering the application, released a decision approving the consent application just before Labour Weekend.

The consent conditions are very similar to the Correnso conditions currently in place.

The consent conditions are very similar to the Correnso conditions currently in place. This includes similar limits on blast vibration, the timing of blast events and AEP payments. As with Correnso, we are also required to have a Vibration Management Plan and conduct vibration monitoring. There are similar requirements for the Dewatering and Settlement Plan, Community Meetings, and the provision of a complaints procedure.

Contact us:

Donna Fisher, Company Liaison Officer
0800 WAIHIGOLD (0800 924 444)



Gravity surveys help us 'see' subsurface geology.

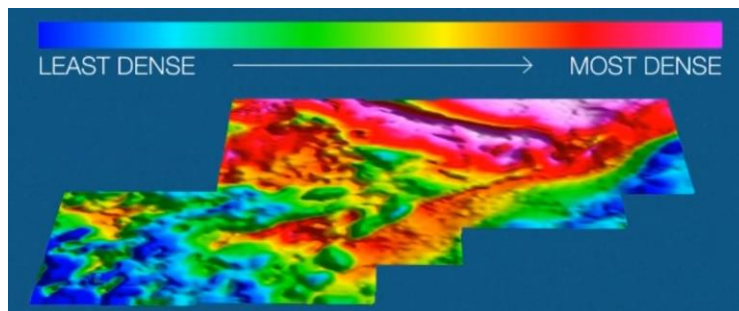
Gravity Surveys

Over the next few weeks, geophysicists working for OceanaGold Waihi will be carrying out gravity surveys along some streets in Waihi East.

Gravity surveying measures the change of rock density by looking at changes in gravity. This process provides us with a sub-surface geology of a surveyed area so we can 'see' what is underground.

What are we doing?

A portable gravimeter the size of a small suitcase is placed on the ground at points along a predetermined route. The operator records a reading at each point before moving on to the next. Once there are enough readings recorded, the data is processed by computer to create a detailed map of the surveyed region. The processed gravity maps define regions of rocks and minerals with different densities by assigning colours. The red end of the spectrum indicates more dense rocks, the green end indicates lighter rocks. Interpretation of this data helps us gain an understanding of what mineral types and resources may be found in the surveyed area.



How does it work?

Like all matter, the Earth generates a gravity field that can be measured using specific instrumentation. The Earth exerts a constant pull of gravity which we experience as things either falling, or being held to the ground. The force of gravity is not the same at all points around the planet, it varies at different points. Mountains and ocean trenches can affect the earth's local gravity field. These, as well as the composition of elements within the Earth's crust all cause micro-variations in gravity. We measure these micro-variations by using a gravimeter which works by recording the downward acceleration of mass from the minute fluctuations of a finely balanced spring which is extremely sensitive to incredibly small fluctuations in gravity.

Armed Offenders Squad on Gladstone Road

The Armed Offenders Squad was in action on Gladstone Road recently, but it wasn't due to local criminal activity.

Members of the squad were in Waihi using a property owned by OceanaGold to practice their skills. The house used is currently empty and scheduled to be demolished as it is not economic to refurbish and cannot be rented out in its current condition.

Donna and Jeannine spent time visiting immediate neighbours to explain what was about to happen. The last thing we wanted was any local resident choking on their breakfast cornflakes as an armed man in black crept along the next door fenceline.



Members of the Armed Offenders Squad were in a property on Gladstone Road recently using an OceanaGold house to practice their skills and tactics.

BLAST VIBRATION WORKSHOP | MONDAY 21 NOVEMBER | 1.00PM | EDUCATION CENTRE

We will contact those who have already indicated they wish to attend. There is plenty of room for more people.

Contact Jeannine Wiki Jeannine.wiki@oceanagold.com or phone us on 0800 WAIHIGOLD

November 2016

KEY

- Existing mining
- This month's planned mining
- Property boundaries

This information prepared 2 November 2016

Code Red

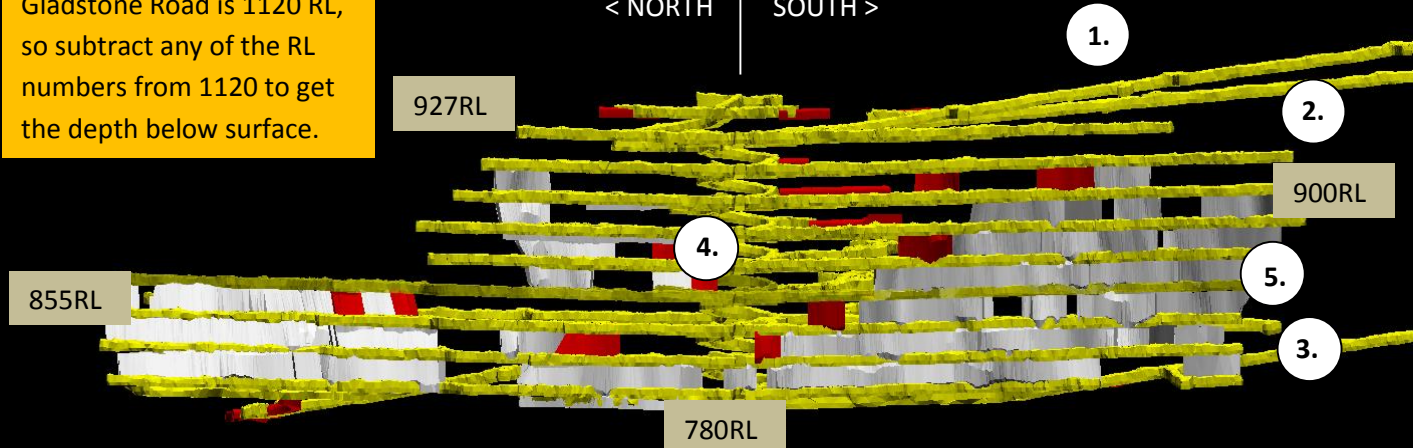


OceanaGold Mines Rescue attended the recent Code Red Emergency Services Open Day at Morgan Park. The foam generator they took with them was a big hit with kids of all ages.

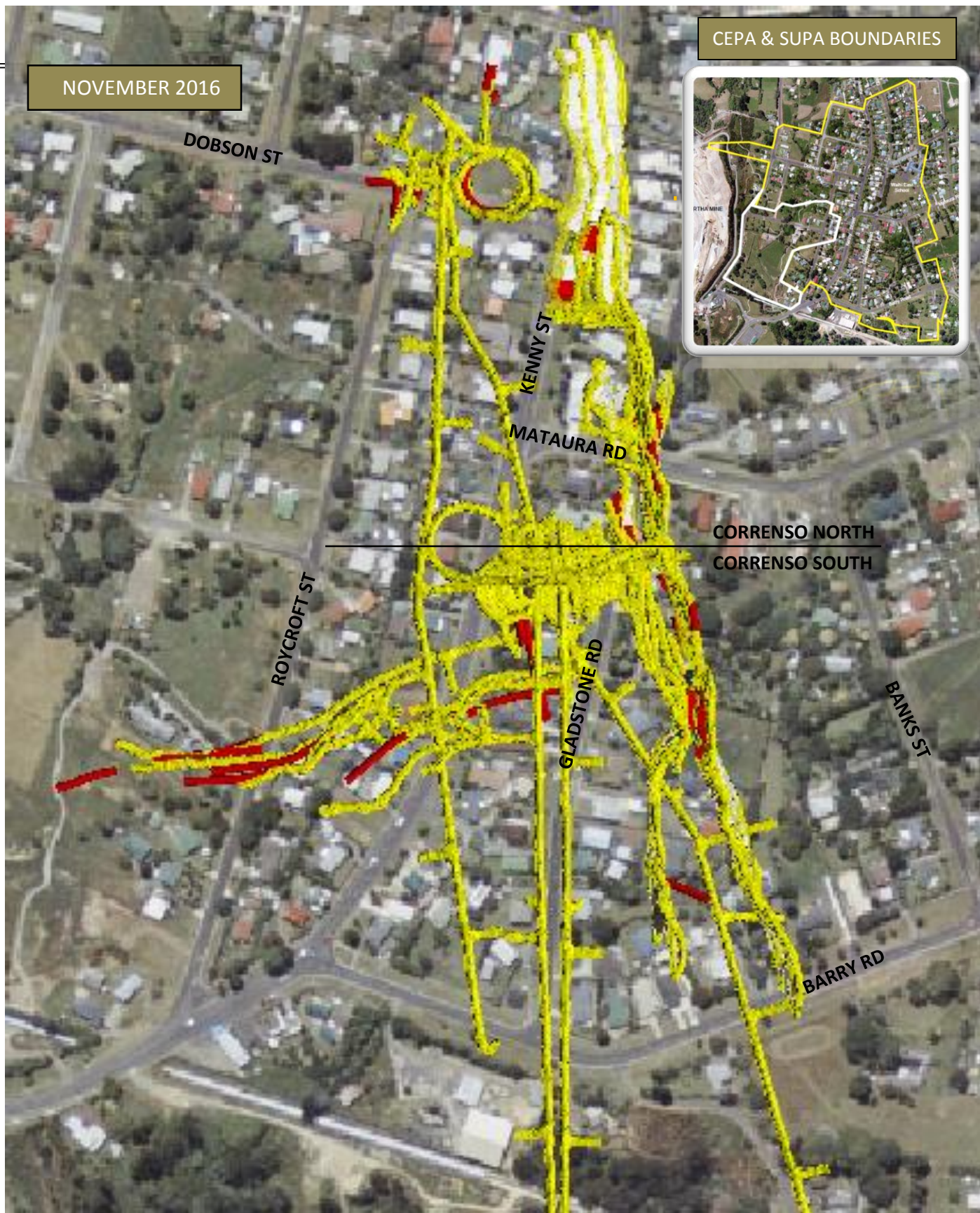


Gladstone Road is 1120 RL, so subtract any of the RL numbers from 1120 to get the depth below surface.

< NORTH | SOUTH >



Existing workings Backfill This month: drives This month: stopes



KEY

- CEPA Area
- SUPA Area
- Existing mining
- Planned mining for this month

This information prepared 2 November 2016

Mine Development Plan

Published at the start of each month as required by Condition 22a of the Correnso Underground Conditions of Consent and Condition 14a of the Slevin Underground Conditions of Consent.

0800 WAIHIGOLD (0800 924 444)