

## Latest News

### Correnso Community Meeting: Thursday 15 September, 3.00pm

The next Correnso Community Meeting will be held on Thursday 15 September at the Education Centre, corner of Moresby Avenue and Savage Road at 3.00pm. As usual written copies of the minutes and audio recordings on disc will be available approximately two weeks after the meeting. Please note that this date is different to that advised in the August East Ender.

### Blast Vibration Workshop

In the last issue we asked if members of the community would be interested in attending a Blast Vibration Workshop similar to those which were run last year. We have had a small number of people register their interest, but not enough to make it worthwhile to get all of the presenters to Waihi. If you would like to attend, but have not yet let us know, please get in touch. [Jeannine.wiki@oceanagold.com](mailto:Jeannine.wiki@oceanagold.com)  
0800 WAIHIGOLD (0800 924 444)

### Pit Rim Walkway

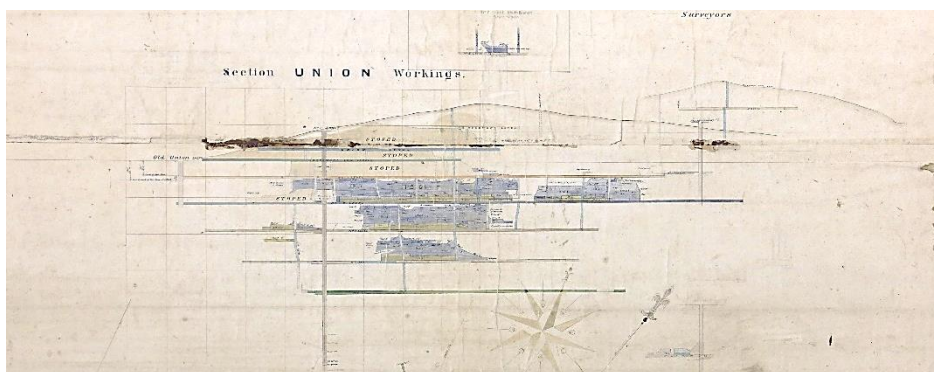
Regular users of the Pit Rim Walkway will be aware that we have recently rerouted the path away from Pitt Street. We had originally put the first detour after the rock fall down Pitt Street, but residents have informed us of ongoing issues with people attempting to take short cuts through their properties. For this reason, this section of the walkway now follows Savage Road and Cambridge Road. The route is clearly signposted. Apologies for any inconvenience this may cause.

## Underground work resumes



*Above: All work activities have resumed underground.* | Regular shifts and all activities resumed underground on night shift, 4 August, a week after the tragic death of one of our colleagues in late July.

## Mapping it all out



*Above: One of the original maps from the Waihi area.* | We have quickly got used to digital maps like the ones the mining engineers provide us for the *East Ender*, but not too many years ago they were hand drawn on linen or parchment-like paper. Many have survived, but lots have also been lost around the country. Currently there is a programme underway to catalogue and digitise all of the historic maps around New Zealand.

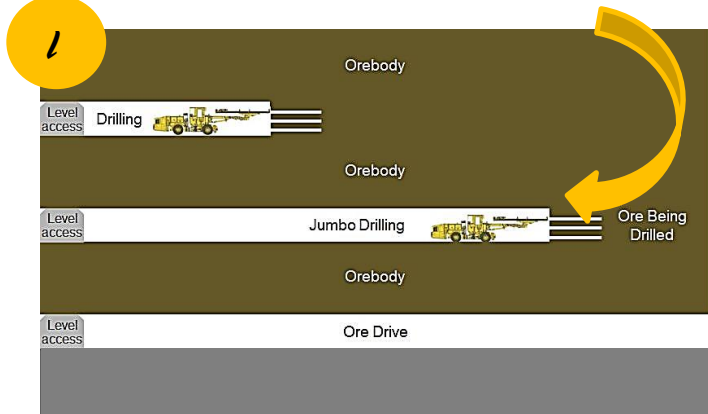
### Contact us:

Donna Fisher, Company Liaison Officer  
0800 WAIHIGOLD (0800 924 444)

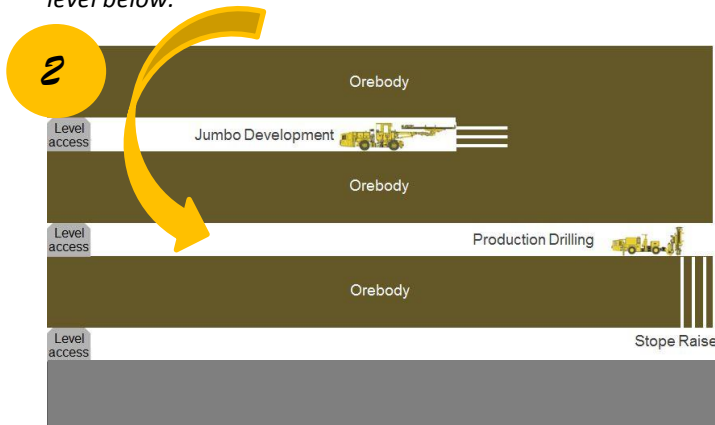
## Mining 'bottom up'

Starting this month, the cross section graphic on page three will feature the areas we have backfilled as Correnso has been developed. Here is an explanation of backfilling we ran in the January 2015 edition of the *East End*.

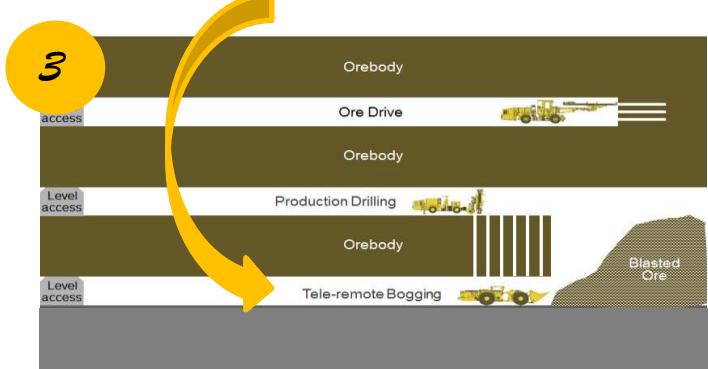
Drilling machines called Jumbos drill into the orebody. The drill holes are charged and blasted to create tunnels on each level.



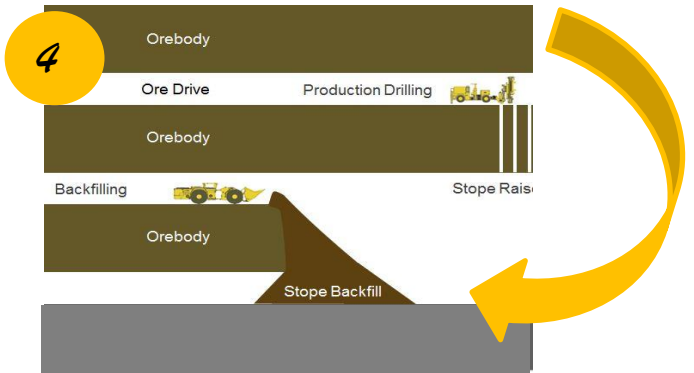
A production drill called a Solo drills holes between the levels. These holes are charged and blasted with production - or stope - blasts. The blasted rock ends up as a broken rock pile on the level below.



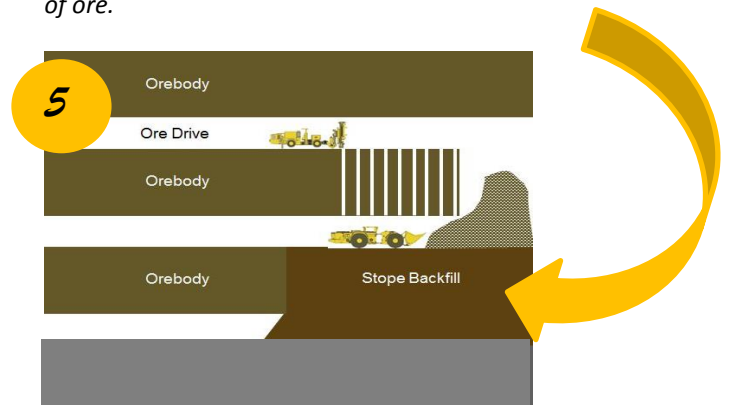
A low front end loader called a Bagger removes the broken rock which is taken to the surface. This process continues until all of the material has been removed. The Bagger is worked by remote control.



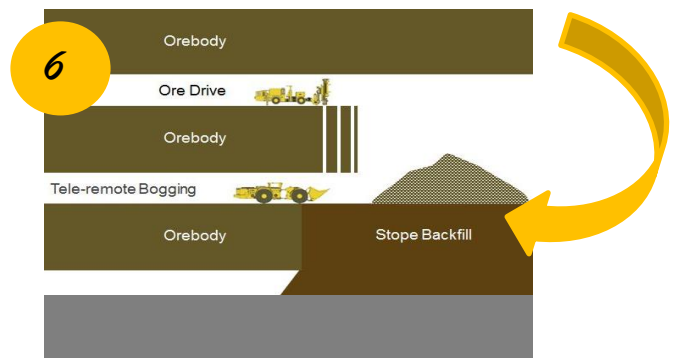
When the stope is completely mined out backfill is tipped into the void area. This is usually done from the level above. The backfill material is non-gold bearing material which miners call waste rock. This was mined during the development phase.



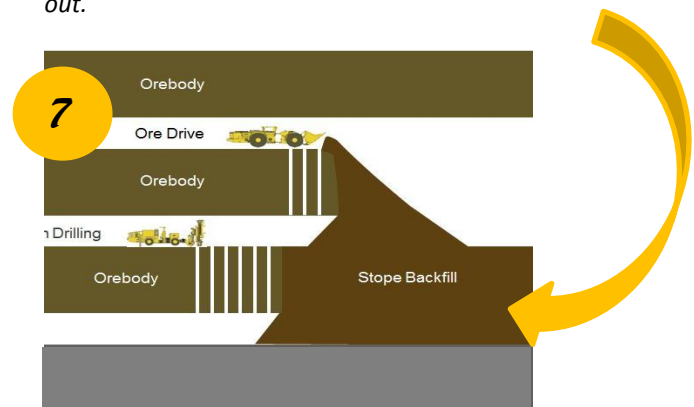
The mined out stope is completely filled with waste rock. Mine vehicles drive on top of this material to mine out the next panel of ore.



The newly mined ore is loaded out and trucked to the surface.



The process starts another cycle as the stope is backfilled with waste rock and panels of ore are charged, blasted and loaded out.





## Changes to graphics

Last month we had two requests relating to the graphics on Pages Three and Four which we are able to accommodate.

The cross section graphic on Page Three below will now feature areas that we have backfilled.

The second request concerned the small map on Page Four showing the CEPA boundary. We can't show the boundary on the larger map as it would be well off the page, but it was also impractical to update the small map each month showing the most recent mining activity when this information is shown on the full page graphic. This has proved to be confusing for a few people, so we have decided to remove any workings from the small boundary map. This means if you want to see where we are planning to be this month, look at the full page map. If you want to check where the CEPA boundary is, use the small image at top right on Page Four.

September 2016

### KEY

- Existing mining
- This month's planned mining
- Property boundaries

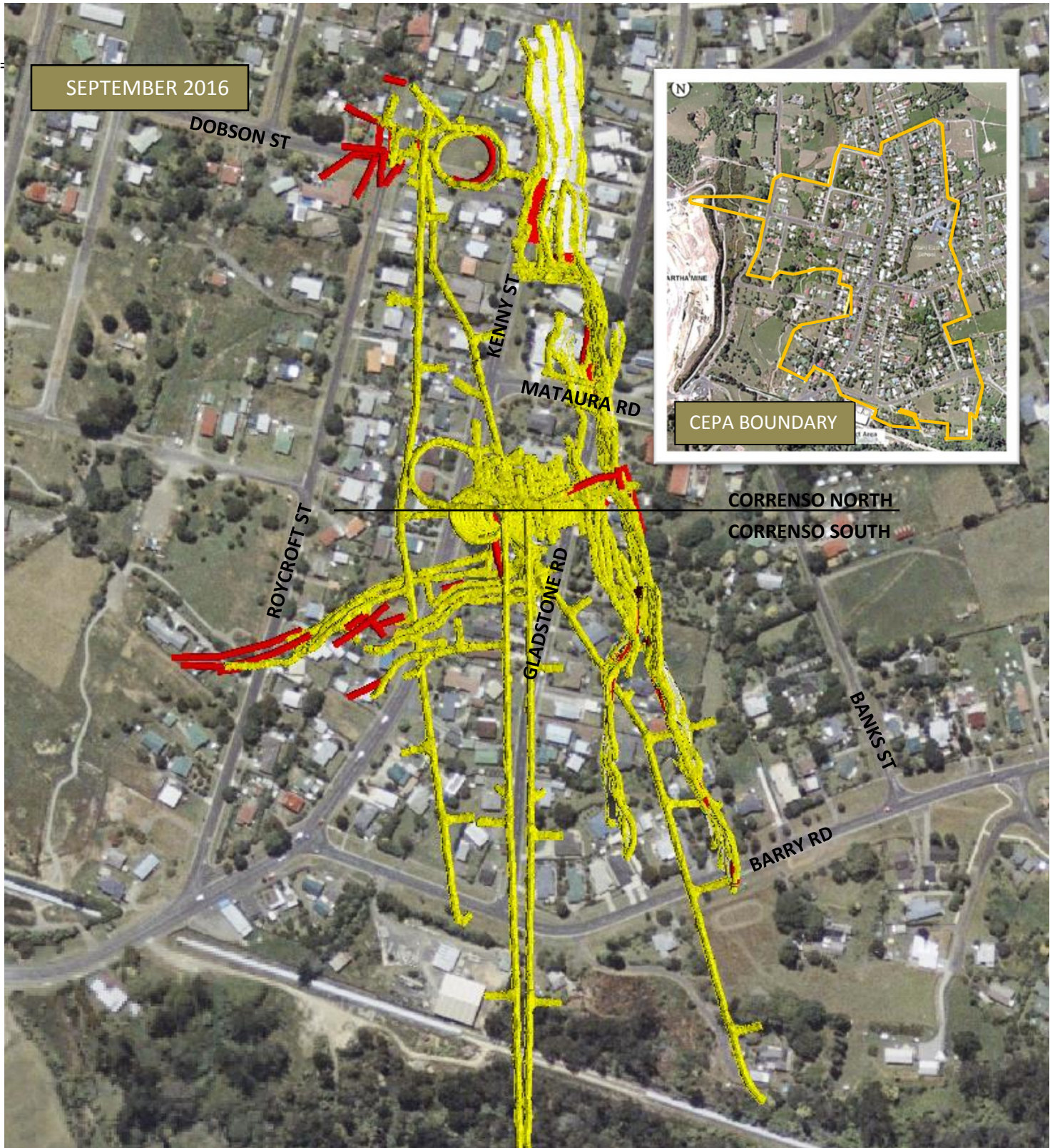
*This information prepared 2 September 2016*



Gladstone Road is 1120 RL, so subtract any of the RL numbers from 1120 to get the depth below surface.







#### KEY

- CEPA Area
- Existing mining
- Planned mining for this month

*This information prepared 2 September 2016*

## Mine Development Plan

Published at the start of each month as required by  
Condition 22a of the Corrense Underground  
Conditions of Consent

**0800 WAIHIGOLD (0800 924 444)**