

The East Ender

Distributed to residents
of Waihi East

JUNE 2016

Latest News

What's happening at Martha?

It may look as if nothing is happening at Martha mine after the April 26 rock fall which saw around two million tonnes of rock slip from the north wall.

'Since the initial slip more rock has fallen, and we expect some more to come down yet.'

Since the initial slip more rock has fallen, and we expect some more to come down yet. The tension in the surrounding rock is redistributing, as this happens there will be smaller rock falls from the north wall.



We are conducting a number of technical appraisals to determine the best way of dealing with the problem. We need to determine the best way of leaving a stable wall, and we need to ensure that we can do that work safely.

Until we receive and consider all of these reports it is still too early to determine when access to the open pit will be regained and how this will happen.

Whatever the final decision on the pit, there will need to be some significant remedial work on the top of the north wall, and this in turn will require us to remove material from the top to reduce the weight.

Waihi East School Playground



Above: Waihi East School students try out the new playground shortly after the opening ceremony.

We are pleased to have been part of the Waihi East School playground project. If the opening day enthusiasm is anything to go by, it will be a very popular facility. The playground was funded by Waihi Gold through the 'Streets Ahead' programme administered by the Waihi East Community Forum.

0800 WAIHIGOLD

Our 0800 freephone is available 24 hours a day. During the week between 9.00am and 4.00pm it will be answered by one of our staff. Outside of these hours and over the weekend you can leave a message, or be put through to security staff if there is an issue which needs to be dealt with immediately. All calls are logged, whether you talk with one of our staff or leave a message. All complaints and concerns about mine operation effects such as vibration or noise are logged into a database and form part of the agenda for each morning's management meeting. In January and July a report detailing all complaints and concerns from the previous six months is sent to Waikato Regional Council and Hauraki District Council. This process is followed irrespective of who takes the initial call, or if you leave a message. If you do leave a message and want us to call you back please indicate this. We will get back to you by the next working day.

Contact us:

Donna Fisher, Company Liaison Officer
0800 WAIHIGOLD (0800 924 444)



The Deprivation Index

You may have read the June 2 Update in the Waihi Leader in which we addressed some of the recent comments made about the gold mining industry. One of the criticisms was that as Waihi has a high deprivation index, this shows that mining does not contribute to the local economy.

What is NZDep?

NZDep was developed by health researchers for use in planning the provision of health services. The information is derived from census data. A low score means 'less deprived' while a score closer to the maximum of 10 indicates a 'more deprived' area. The index was never designed to compare one area with another or for use outside the health area. It is prone to widespread misuse.

What does NZDep measure?

The Deprivation Index measures nine variables. They include such things as whether you own your own home, what qualifications you have, whether you have a job, or have been on any sort of benefit over the last year, how many people in each bedroom in your house and if you have a car or phone.

The Deprivation Index is affected by a wide range of interwoven factors, most of which are outside the influence of employers. Some of these situations exist as a result of a wide range of current and historical social, political and economic factors.

' ... most of the blocks facing Port Road in Whangamata score 9 or 10 ... '

How do we measure up?

Waihi has a high deprivation index score of 8.8. Many areas in the middle of the town score between 8 and 10.

Interestingly, most of the blocks facing Port Road in Whangamata score 9 or 10, and those around Queen, Pollen and Mackay Streets in Thames score 8 and 9. The hill blocks along the bypass route above Whangamata score 3, as do several areas in the Kauaeranga Valley.

It is not possible to average out these scores and use them to compare one location or town with another. If it was, we would be asking why a tourist town like Whangamata has such high scores and why the tourism industry has not 'contributed more' to the town.



Above: Understanding cause and effect. Many of the streets around Otago University have a high deprivation index score, but it would be incorrect to state that the university is 'responsible' for the rating. The factors contributing to an NZDep score are much more complex than a simple cause and effect relationship.

What can a large employer do?

Many of the contributions a large employer makes to a community are not measured by NZDep. Waihi's rating does not reflect many of the benefits of the presence of mining, just as Whangamata's rating does not reflect the benefits of the tourism industry.

In Waihi we provide annual donations or sponsorships for many clubs, groups and organisations in the community. This has no effect on the Deprivation Index score because the index is not designed to measure this data.

Where to from here?

Should we be reducing our assistance to local organisations and sponsorship of events, and instead target our funding, for example, towards increasing the qualifications of young people in Waihi? This would improve the deprivation index rating. Would it be better for the town as a whole? If we assist the community should we only target initiatives that will decrease the deprivation score?

Some indicators of social deprivation have much broader causes. Benefit levels are heavily influenced by government policy, and home ownership and bedroom occupancy by the affordability of housing. These are issues for local and central government to address.

There will always be different views on how best a major employer such as OceanaGold can best partner its community. That's useful, but it is an incorrect interpretation of the data to state that the high 'level of deprivation' in the town means that the mining industry therefore does not contribute to the town's economy.



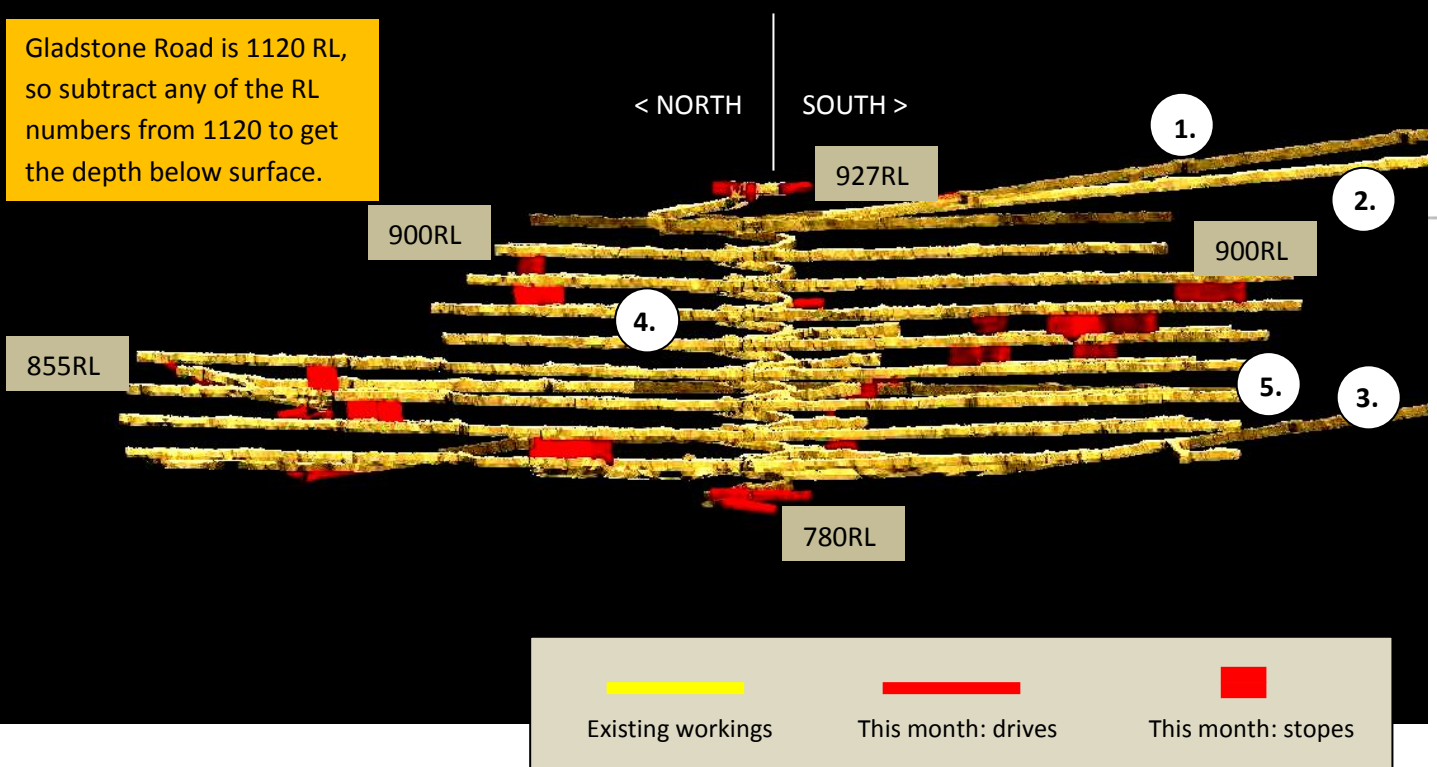
Sky Tower on the same scale



Gladstone Road is 1120 RL, so subtract any of the RL numbers from 1120 to get the depth below surface.

< NORTH

SOUTH >



JUNE 2016



KEY

- CEPA Area
- Existing mining
- Planned mining for this month

This information prepared 2 June 2016

Mine Development Plan

Published at the start of each month as required by
Condition 22a of the Corrensen Underground
Conditions of Consent

0800 WAIHIGOLD (0800 924 444)