

Recent News

CORRENSEN COMMUNITY MEETINGS

The regular six monthly Corrensen Community Meetings were held on March 8. The afternoon meeting was attended by 14 members of the public. Four people attended the early evening meeting.

Minutes from the meeting were emailed to everybody on the *East Ender* contact list. Print copies are available at the iSite and Council Service Centre along with audio recordings on DVD.

When we first started these meetings they were attended by larger numbers and we ran two meetings on the same day to accommodate as wide a range of people as practicable.

Now that we have been meeting for a few years and mining at Corrensen is well underway the numbers have dropped off markedly.

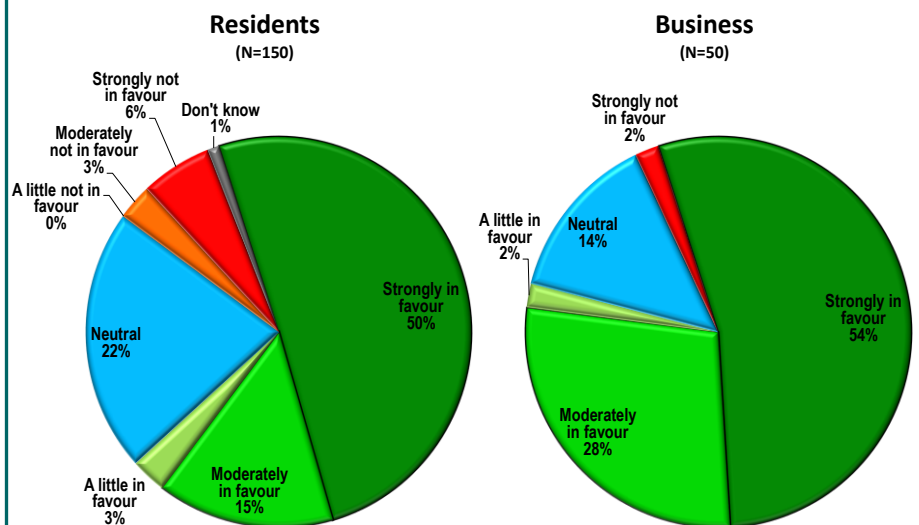
We still need to have six monthly meetings. The consent conditions require this, and the meetings have proved a useful way of providing residents with information and answering questions.

What we are currently considering is whether there is still value in holding two meetings presenting the same material just a couple of hours apart, especially when the early evening meetings now attracts very few participants.

Perception survey results

Last year we contracted a professional independent research company to poll the local community on their perceptions of our activities. The survey was conducted by telephone, calling people on a mix of landlines and their mobile phones over the period 21 October to 6 November 2015. A random sample of 150 residents aged 18 or over living in Waihi and surrounding areas was contacted, and the results tabulated by the research company. The data from the survey forms part of the SIMP, the Social Impact Management Plan, which is currently with Hauraki District Council. Some of the poll results were presented at a recent BA5 and also at the recent Corrensen Community meetings. In this *East Ender* we present a selection of the data.

Opinions about Corrensen Underground Mine



A sample size of 150 for the size of our community is not large by polling standards. That was to reduce the burden on the Waihi community of participating in surveys, although feedback from the survey was that people very largely appreciated the opportunity to have their say. The maximum margin of error for this size of survey is plus-or-minus 8%, which compares with the plus-or-minus 3% typically quoted for national polls of 1000 people. The survey also covered a complementary sample of 50 business owners and senior managers in and around Waihi. These people were also interviewed by telephone, over the same period.

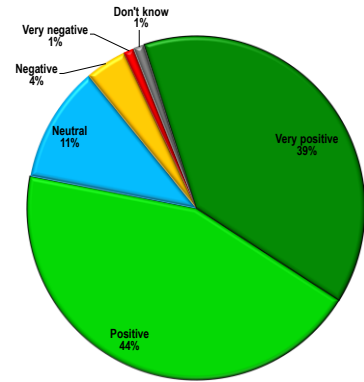
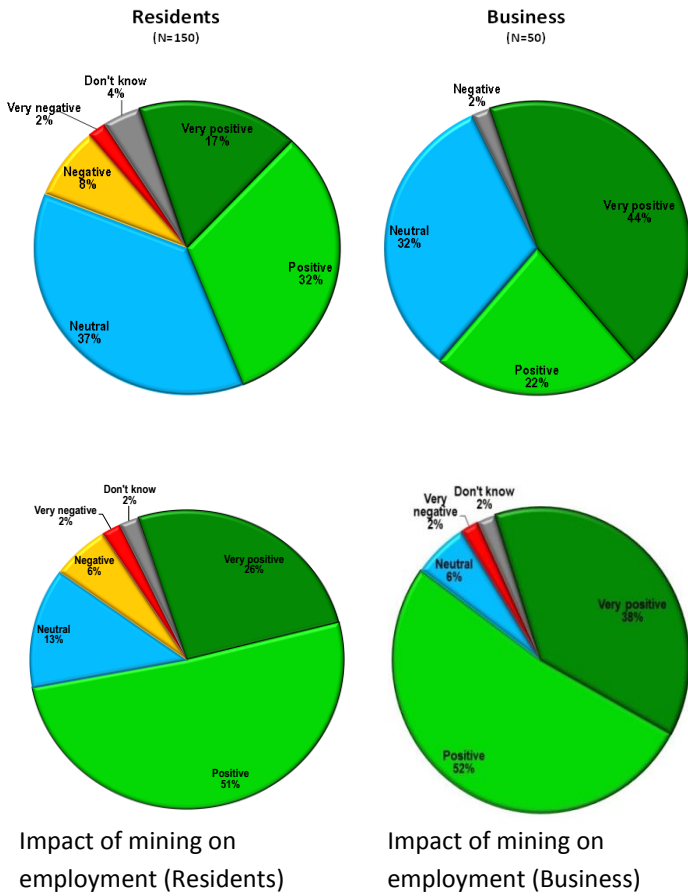
Contact us:

Donna Fisher, Company Liaison Officer
0800 WAIHIGOLD (0800 924 444)

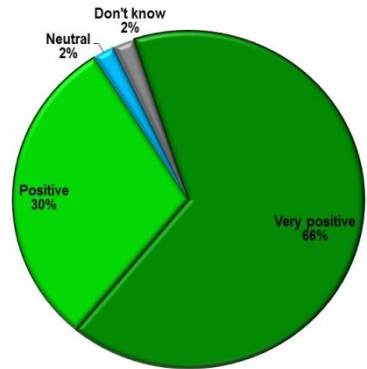
Perception survey results

(continued)

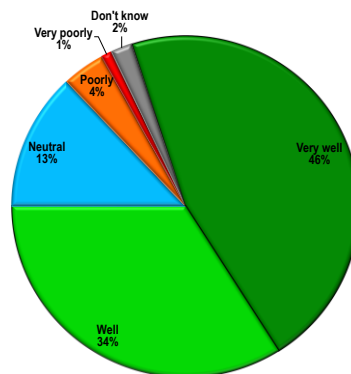
Impact of mining on your health and wellbeing



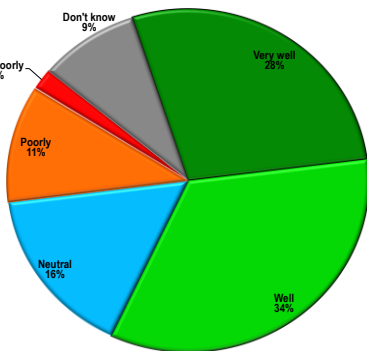
Impact of mining on the economy (Residents)



Impact of mining on the economy (Business)

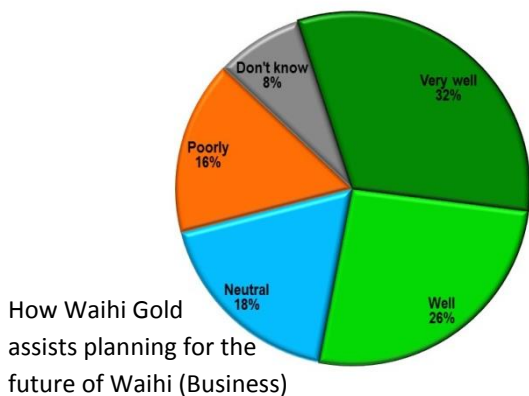
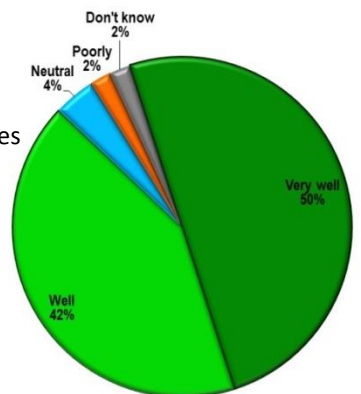


How Waihi Gold manages relationships with the community (Residents)



How Waihi Gold assists planning for the future of Waihi (Residents)

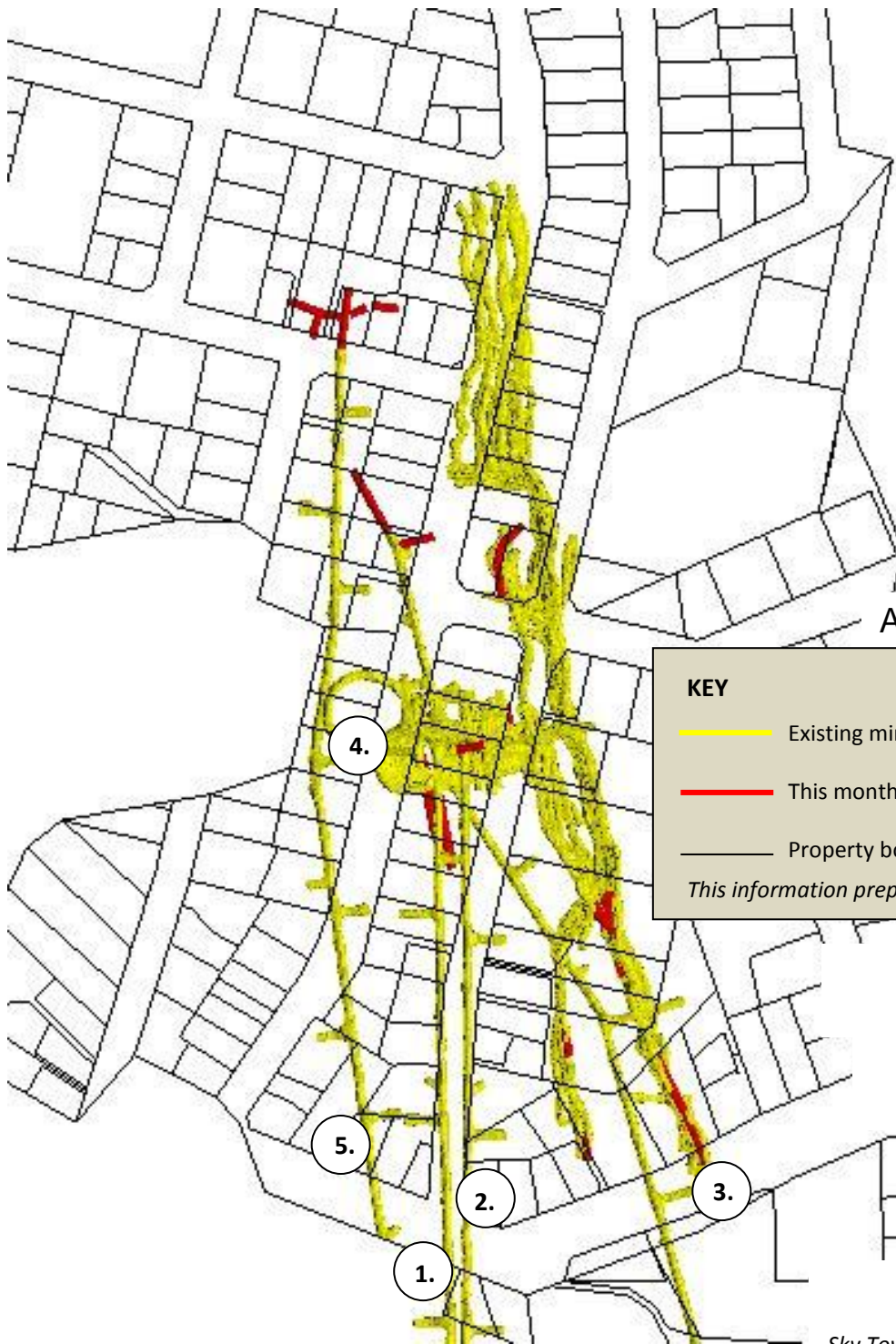
How Waihi Gold manages relationships with the community (Business)



How Waihi Gold assists planning for the future of Waihi (Business)

www.waihigold.co.nz

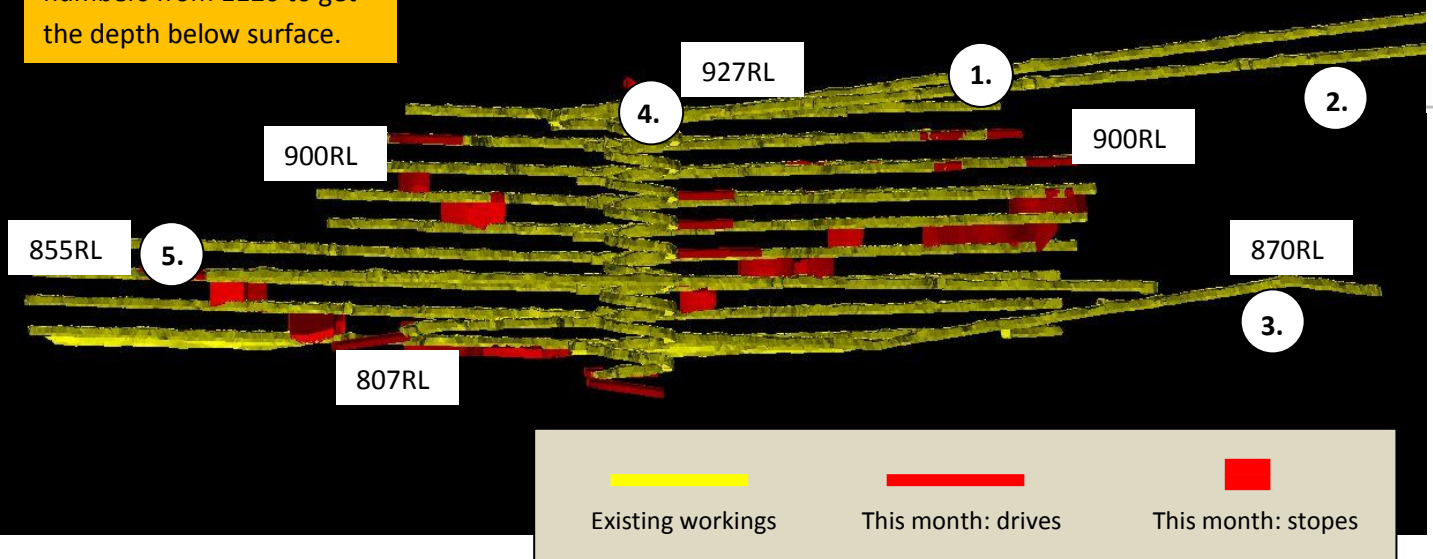
Our new website is now live. The website address is the same, as is much of the content, but we have refreshed some of the functions. If you use the site to find blast times, you can scroll down the home page to find this information with one click.



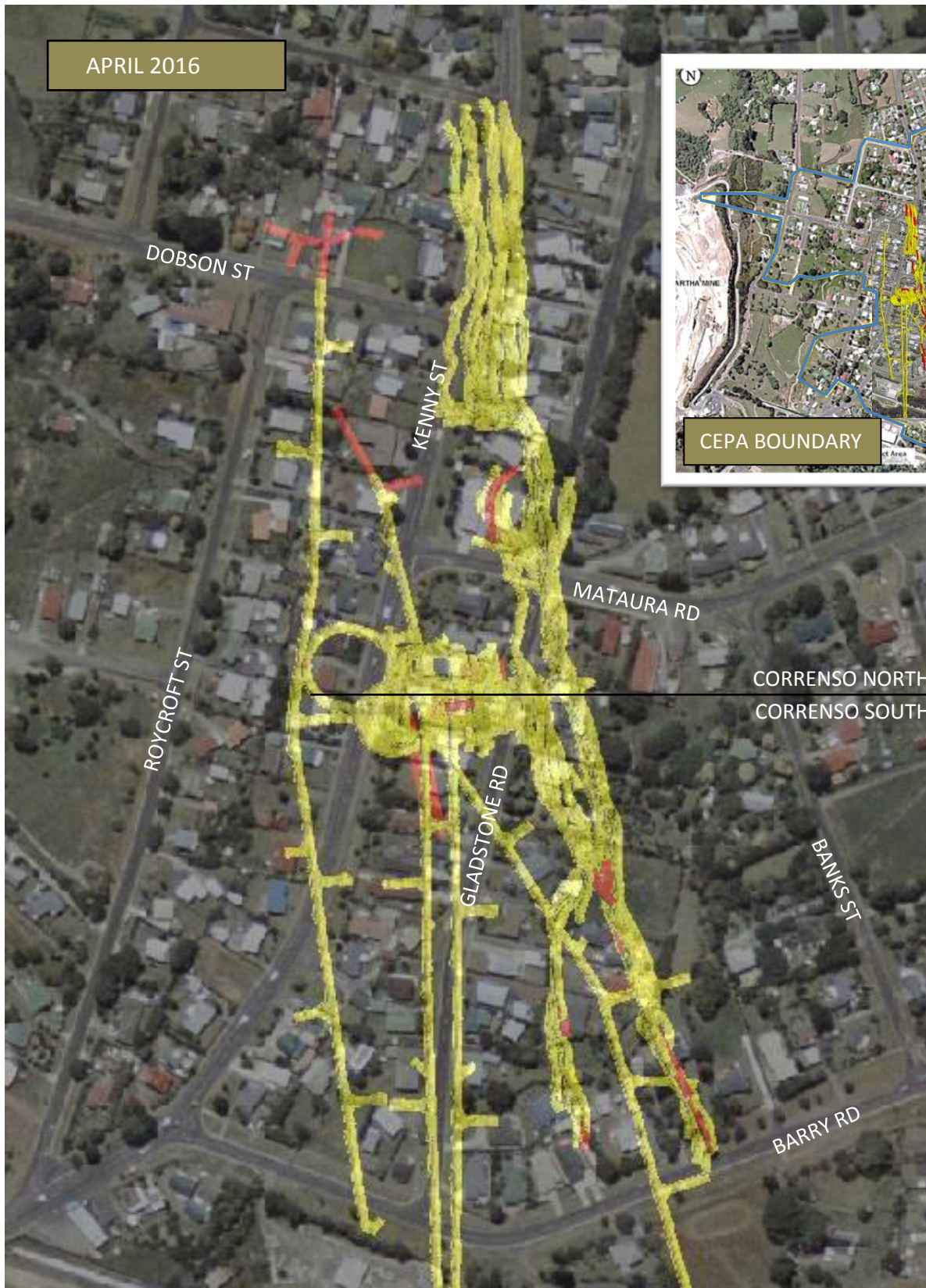
Sky Tower on the same scale



Gladstone Road is 1120 RL, so subtract any of the RL numbers from 1120 to get the depth below surface.



APRIL 2016



KEY

- CEPA Area
- Existing mining
- Planned mining for this month

This information prepared 4 April 2016

Mine Development Plan

Published at the start of each month as required by Condition 22a of the Corrensen Underground Conditions of Consent

0800 WAIHIGOLD (0800 924 444)