

Recent News

Underground Experience



Above: The first group of Waihi East residents visiting the Underground Experience on August 3.

We have been conducting regular underground tours of Correnso for Waihi East residents for some time now. We know that not everybody wishes, or is able, to travel underground, but they are still interested in learning more about the operation.

For this reason, we have now started offering Waihi East residents underground tours on the surface. Confused? We have an 'Underground Experience' activity at the Education Centre. It is as close as you will get to being underground without actually being there. This means that if you are not walking too well, or even using a mobility scooter, we can still take you 'underground'. Thousands of school students have participated in this activity, now it's the turn of Waihi East residents.

A number of Waihi East people indicated on the recent questionnaire that they would like to visit the Underground Experience and Jeannine has been contacting them to arrange a suitable time. If you live in Waihi East and would like to visit, please contact us on 0800 NEWMONT

Changes to Top Up

The Background: As detailed last month, Top Up was introduced in March 2012 and was designed to address the potential issue of house prices in Waihi East falling immediately following the Correnso announcement. Top Up involves Newmont Waihi Gold agreeing to pay the difference between a 'fair price' asked by the vendor and a 'fair offer' presented by a prospective purchaser. The original programme covered the larger Golden Link Project Area (GLPA) and an area north of the Martha open pit for the Martha Extensions Project (MEP), although properties closest to planned underground mining activity were given preference over those further away.

During the programme to date, 103 Top Up applications have been received and 87 approved. 62 purchases have been completed with three in progress.

During the programme to date, 103 Top Up applications have been received and 87 approved. 62 purchases have been completed.

The changes: During the consent process the GLPA was reduced to the Correnso Exploration Project Area (CEPA), but the Top Up area remained the same. The slip in the open pit meant mining activity was stopped. As a result, we reduced the Top Up area to more closely align to the CEPA boundary, while also including areas north of the Correnso boundary and between the open pit and CEPA.

In hindsight, we realise that these changes were made too quickly. We appreciate that some parties may have entered into negotiations on the basis that Top Up was available. To enable these negotiations to be completed we have temporarily returned the Top Up boundary to its earlier position. This will remain until 31 August, after which time the reduced area will be in effect. We trust this additional time will allow those people to complete the sale or purchase.

As we have previously stated, the Top Up programme was always intended as an interim measure, and was introduced as one part of a programme package designed to 'even out' any potential property market effects of the Correnso announcement. As the mine develops it will be phased out.

CORRENZO COMMUNITY MEETINGS
WEDNESDAY 9 September 2.00pm & 5.30pm

Contact us:

Donna Fisher, Company Liaison Officer
0800 NEWMONT (0800 639 6668)


NEWMONT

Blast Vibration Workshops



Above: Newmont Waihi Gold Underground manager Charlie Gawith and independent acoustic and vibration consultant Jon Styles from Auckland present material at the workshop.

The recent Blast Vibration Workshops provided those attending with a wide range of information. Here's a summary of some of the material presented.

- People notice vibration at higher frequencies
- Buildings are more responsive to movement at lower frequencies
- Correnso blast vibration is high frequency
- You may feel or hear Correnso blast vibration, but it is not at a level that can cause cosmetic or structural damage to buildings

How can you be sure that the levels of vibration generated by blasting at Correnso will not damage residential property?

- Low limits of blast vibration permitted relative to international standards
- Monitoring of blasts at several locations
- Frequency of blast vibration is high

Why does blast vibration feel more obvious inside?

- Little noise associated with vibration outside
- Quieter inside, less 'masking noise'
- Higher frequency vibration is often perceived as reradiated noise (e.g. rattles)
- Badly fixed, loose, or missing piles can magnify effects of vibration

How do common vibration levels compare with those generated by Correnso? (2 mm/s for development, 3mm/s average for production blasts)

Trucks

- 0.6mm/s @ 15m away from inside house
- 2.21 mm/s @ 30m away from outside house

Trains

- 0.4mm/s @ 10m away from inside concrete building
- 2.8mm/s @ 12m away outside apartments

Blast Notification Coasters

Many readers will be aware of the Tsunado Blast Notification Device we have been trialling. This is a small device that plays a short piece of music before an underground blast. We have had several delays due to technical issues, and now we are not able to continue with the roll out of this particular notification device. The two companies providing the device and the transmitting capacity have not been able to reach agreement on ongoing provision of service. This has meant we have had to source alternative technology.

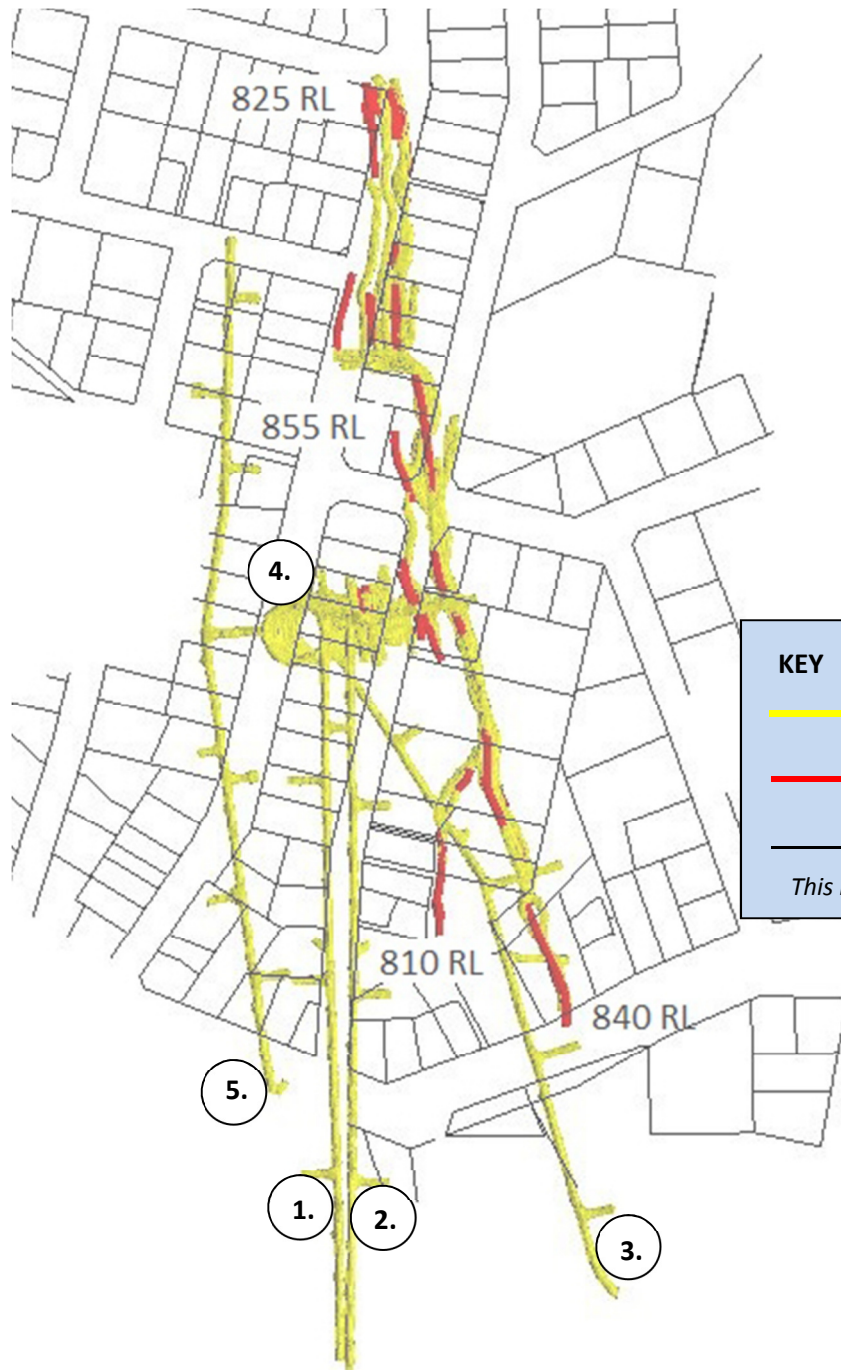


The BNC plugs in to an ordinary power point. It features an on-off switch on the back of the unit.

We now have an alternative. It is something you may be aware of if you have ever ordered a meal at a restaurant and been given a vibrating coaster to place on your table which buzzes when your order is ready.

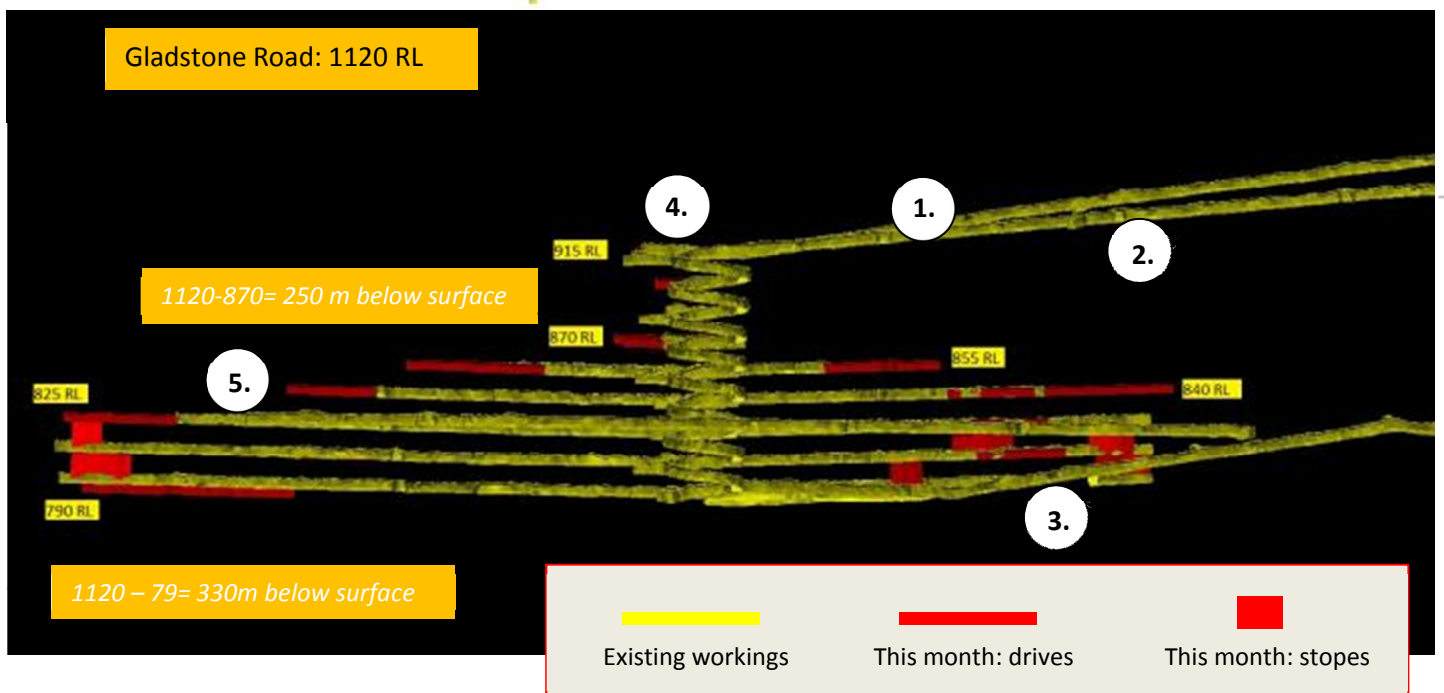
With the help of an Auckland company we have modified the coasters to play music and to plug in to an ordinary power outlet. The units have also been fitted with an on/off switch so you will be able to leave the coaster plugged in to the wall but turn it off if you do not wish to receive blast notifications. We have named these Blast Notification Coasters, or BNC for short.

We have trialled the units in various areas in Waihi East with good results. Over the next two months we will progressively provide residents with this device. Our apologies for the delay in providing this service.

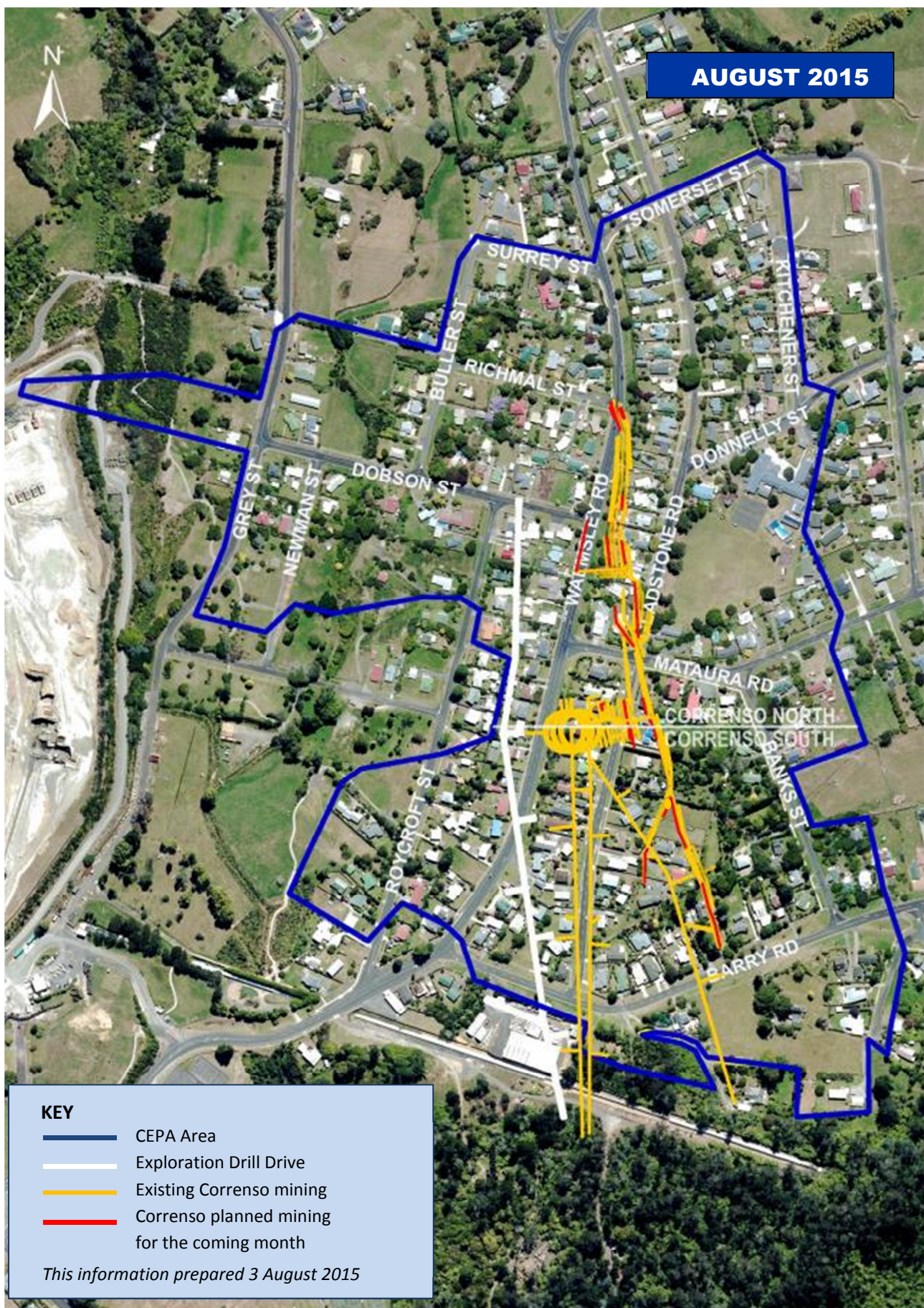


August 2015

Sky Tower on the same scale



AUGUST 2015



Mine Development Plan

Published at the start of each month as required by
Condition 22a of the Correnso Underground
Conditions of Consent

0800 NEWMONT (0800 639 6668)