

Recent News

Blast vibration workshops



We held the next series of Blast Vibration Workshops on Thursday 2 July at Newmont's Education Centre, inviting those people who had indicated in the recent questionnaire that they wished to participate. 40 people attended in total.

As with the workshops held in March this year, Jon Styles from the Styles Group in Auckland presented information on what vibration is, how it is measured and how people perceive it. He also addressed the issue of how we can be sure that levels of vibration generated by the Correnso operation will not damage residential property.

Consulting engineer John Crabtree explained the various loads on residential properties. He discussed the effects of environmental factors such as wind, temperature variation and ground movement due to seasonal moisture content.

Newmont Waihi Gold Underground manager Charlie Gawith explained the consent conditions relating to vibration and how these conditions were put into practice underground. To finish, Andrea Durie, External Affairs manager, briefly detailed the process followed when people expressed concern about their properties.

Top Up programme



The Top Up programme was introduced in March 2012. This programme was designed to address the potential issue of house prices in Waihi East falling immediately following the announcement of the Correnso underground mine. Put simply, Top Up involves Newmont Waihi Gold agreeing to pay the difference between a 'fair price' asked by the vendor and a 'fair offer' presented by a prospective purchaser. The difference is paid to the purchaser who then passes that on to the vendor along with the sum originally offered. This programme covered the original larger Golden Link Project Area (GLPA) and an area north of the Martha open pit for the Martha Extensions Project (MEP), although properties closest to planned underground mining activity were given preference over those further away.

During the programme to date, 99 Top Up applications have been received and 84 approved. 62 purchases have been completed.

During the consent process the GLPA was reduced to the Correnso Exploration Project Area (CEPA, indicated by the blue line on the map on the back page), but the Top Up area remained the same.

Earlier in 2015 a slip in the open pit meant mining activity ceased while assessment of potential re-entry options occurs. As a result, the Top Up area is now being reduced to more closely align to the CEPA boundary, while also including areas to the north of the Correnso boundary and between the Martha open pit and CEPA. This means the Top Up area excludes the Martha Exploration Area (MEP), as well as those on the fringes of the GLPA. This is the first time the Top Up area has been modified.

The Top Up programme was always an interim measure, and was introduced as one part of a programme package designed to 'even out' any potential property market effects of the Correnso announcement. As the mine develops it will be phased out.

Contact us:

Donna Fisher, Company Liaison Officer
0800 NEWMONT (0800 639 6668)



Underground mining at Correnso

This is what a typical stope looks like as we mine out the ore body. The void (or stope) we create and work in is usually smaller than the ore body as we are mining the higher grade ore and leaving uneconomic material. As we work we dig out the roof of the stope and fill in the floor with waste, so the area we mine 'moves' upwards through the ore body.



A drill rig bores a series of parallel holes into ore bearing rock. The holes are filled with explosives which are detonated.



After the blast the ore bearing rock falls to the bottom and is loaded onto trucks. The same trucks bring waste rock back down from the surface.

This 50 tonne loader is being operated by remote control. It is loading out ore while driving on top of waste rock that has been used to fill the stope below. As the operation continues the open stope seen here will be filled with waste rock and the operation will move up to the next level. When the stope is mined out it will have been backfilled almost to the top.





July 2015

KEY

- Existing mining
- This month's planned mining
- Property boundaries

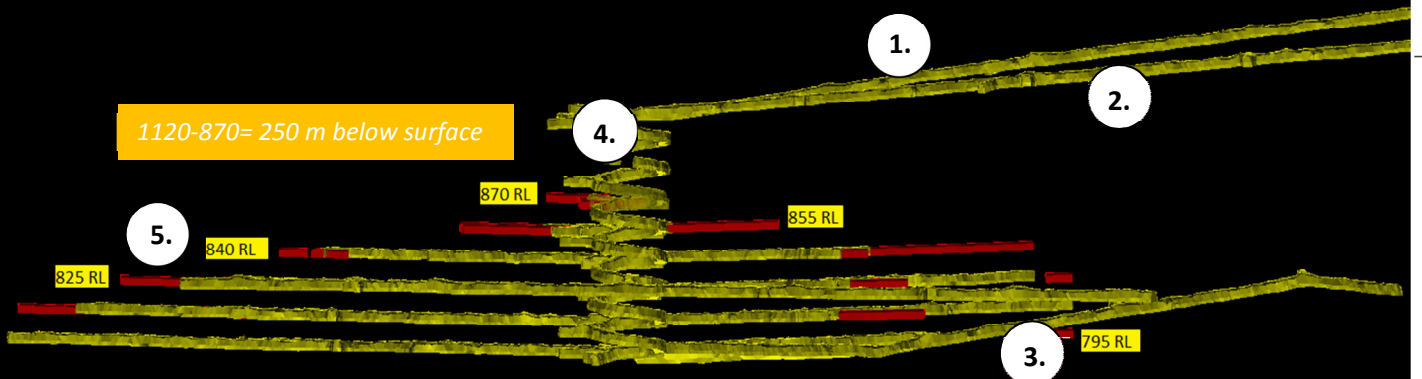
This information prepared 1 July 2015

Sky Tower on the same scale

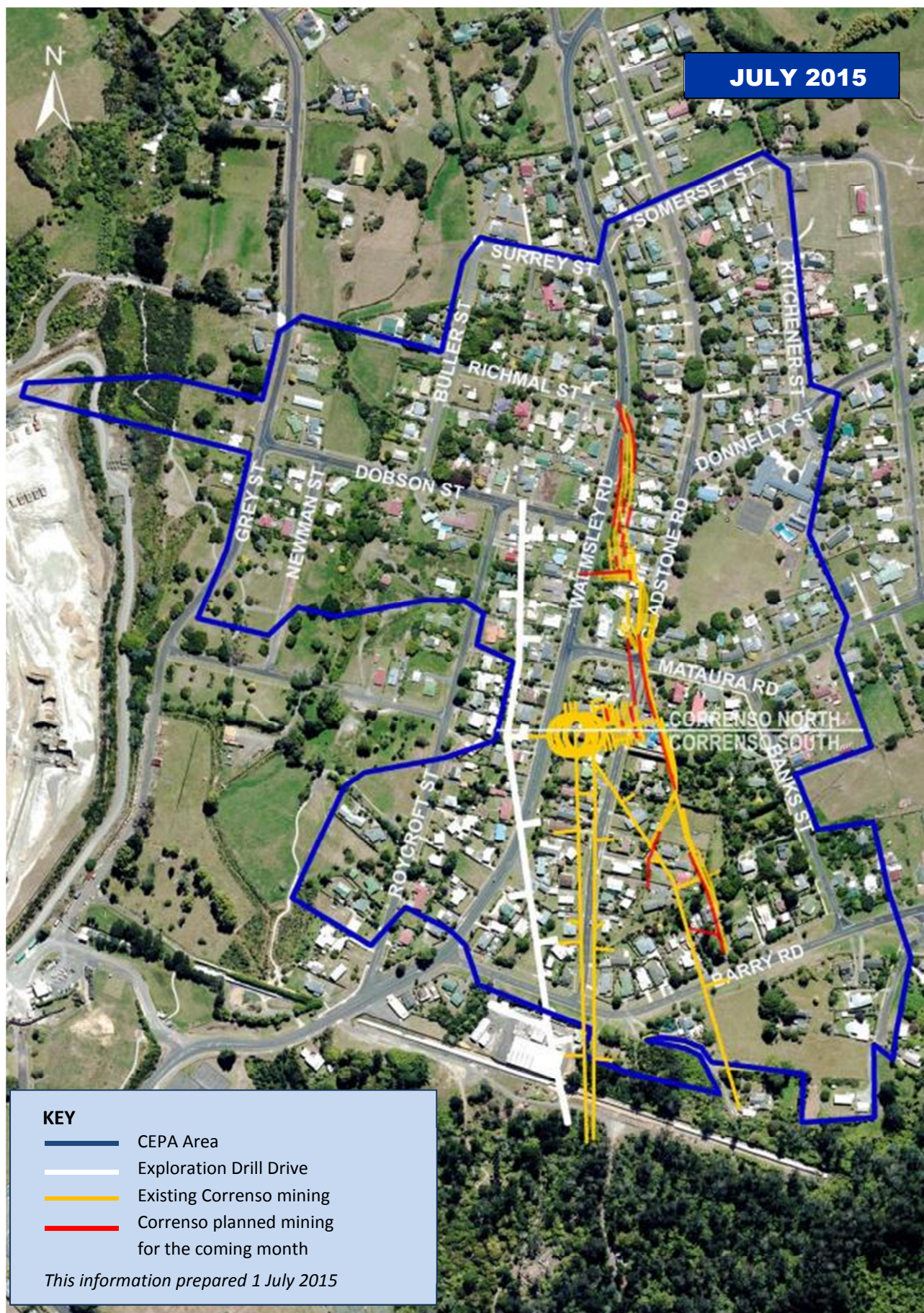


Gladstone Road: 1120 RL

1120-870= 250 m below surface



1120 - 795= 325m below surface



Mine Development Plan

Published at the start of each month as required by
Condition 22a of the Correnso Underground
Conditions of Consent

0800 NEWMONT (0800 639 6668)