

## Recent News

### **Newmont sells Waihi Gold to OceanaGold**

As you will most likely be aware by now, Newmont Mining Corporation is selling its Waihi Gold operations to OceanaGold. The *Update* in the *Waihi Leader* of May 7 provides a range of information related to the sale.

A quick summary:

OceanaGold is purchasing Waihi Gold Company Ltd. This includes all of the assets currently owned by Newmont; the Martha and Correnso mines, milling facilities, exploration tenements, and various properties in and around Waihi. This includes a number of residential properties. Waihi Gold Company Ltd will still be the landlord for tenants, but that company will now have different owners.

Existing contracts with NZ suppliers remain in place.

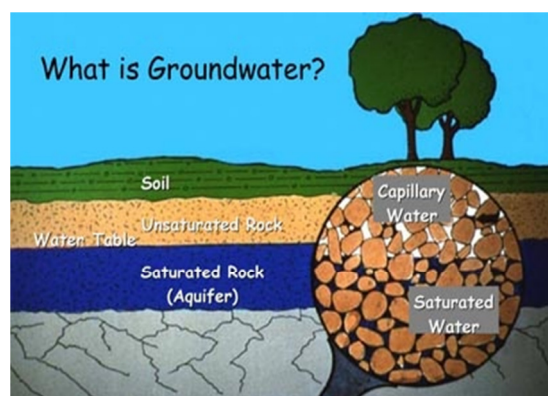
Operating conditions are set in the various consents. These relate to the site, not the owner, and do not change just because of a change in ownership.

Bonds are set for the site, not the owner. Closure bonds and conditions set by local regulators for Martha and Correnso, and site closure will remain the same.

Operating consent conditions will remain unchanged. This includes vibration and noise limits, and hours of work. All other consent conditions will remain the same; for example, the Property Programme, the Independent Review Panel (IRP) and Waihi Community Forum (WCF) funding, and Amenity Effects Programme (AEP) payments.

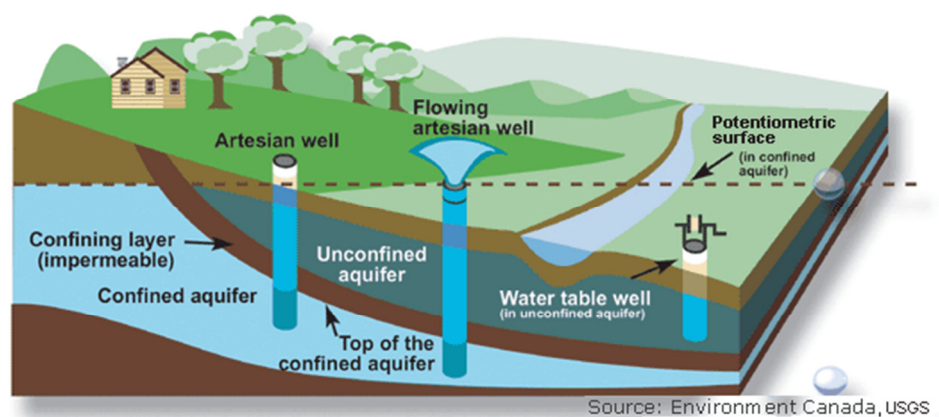
## **The water beneath our feet**

We tend to think of the ground beneath our feet as being just rock. There is also a significant amount of water which is found in cracks and small spaces. This water is called groundwater. It is stored underground, but it also moves slowly through geological formations which are called aquifers.



In many areas we rely on groundwater for domestic use and irrigation. Sometimes water from an aquifer comes to the surface as a spring, but usually we access the water by drilling down through the top layers of soil, clay and rock until we locate the groundwater layer.

Often there is more than one aquifer in the ground underneath us. The diagram below shows two different aquifers with water wells drilled down into each of them. The dark brown rock is impervious, that is, it does not allow water to flow through it and acts to confine and channel the aquifer. The light brown rock is porous and allows water to flow through.



In the diagram groundwater in the confined aquifer (surrounded by impervious rock) is under pressure and flows to the surface in an artesian spring. Water in the unconfined aquifer would need to be pumped to the surface.

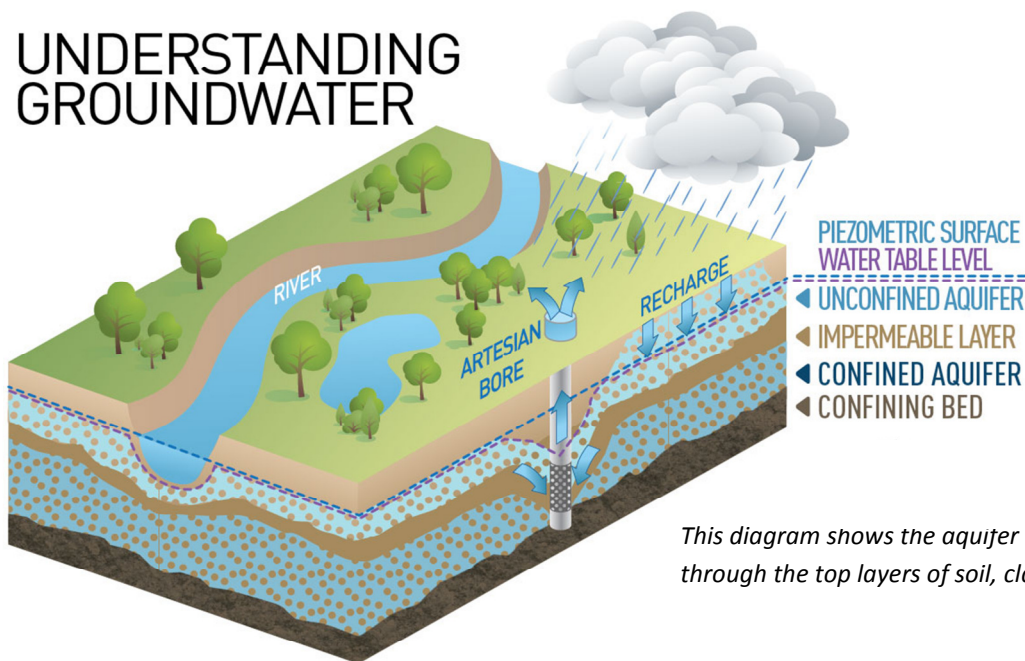
The aquifer is recharged by rainwater. Gravity moves the groundwater downhill following the contour of the impervious rock layers. *(continued on Page 2)*

Find out more  
[www.waihigold.co.nz](http://www.waihigold.co.nz)

Contact us:  
Donna Fisher, Company Liaison Officer  
0800 NEWMONT (0800 639 6668)

**NEWMONT**

# UNDERSTANDING GROUNDWATER



*This diagram shows the aquifer being recharged by rain seeping through the top layers of soil, clay and porous rock.*

## How does this relate to Correnso?

The 'basement rock' in this area is andesite. It extends to considerable depth and has very low permeability. This means water flows through it very slowly. Above this is a series of younger volcanic deposits of various thicknesses and permeability which allow water to travel more quickly in geological terms, but still very slowly at around one centimetre a day. This underlying geology results in a number of aquifers between the surface and the top of Correnso.

Aquifers and the resulting water tables are part of the structure of the ground. Without water present, soils and clays can compress and shrink. Add water and they expand. We see this on our sections and in our gardens when we have dry summers and wet winters. Cracks appear when the ground is dry because the ground is contracting. It will expand again once wet.

## Why measure groundwater?

Accurate and regular monitoring of groundwater levels in all aquifers above Correnso is an important part of mine management. It is also a consent condition. Correnso consent No. 27 requires a groundwater and settlement management plan which can be found on our website.

## How do we measure groundwater?

We use piezometers at various locations to measure groundwater depth. The *Update* of 30 January 2014 (available on our website) explains what piezos do and how they work.

## What do the measurements tell us?

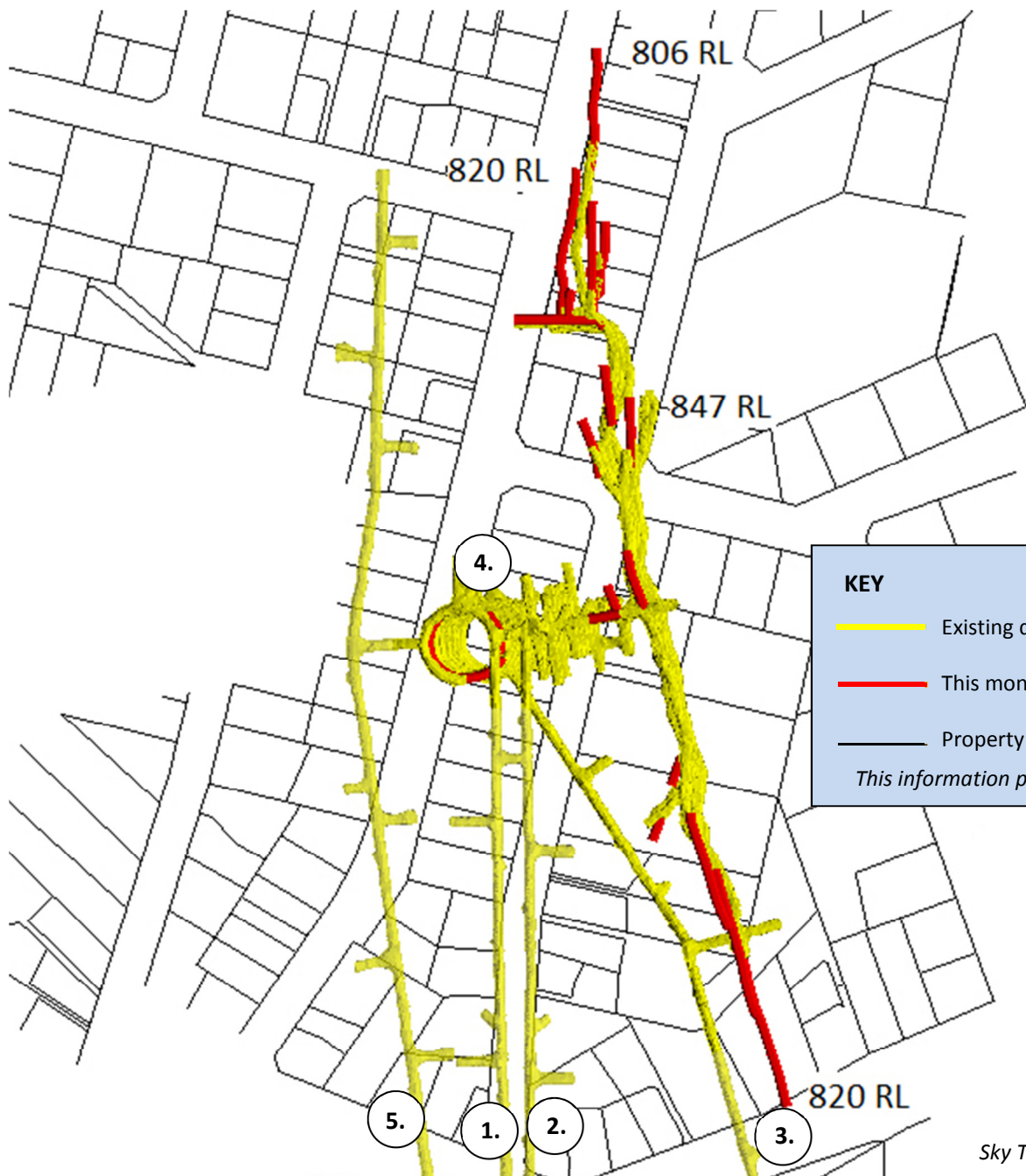
The data we are getting from the various piezometers confirms several things.

- The upper water layers are affected by rainfall and respond in the same way as non-mined areas. They rise soon after a rain event, and fall if there has been no significant rain for a period of time.
- The lower aquifers are affected by rainfall, but not as quickly. They exist independent of short term weather conditions.
- Mining activity has an effect on the aquifers above Correnso. It is within predictions and will not cause damage.



## Tsunado blast notification device roll out

Jeannine and Donna have been out knocking on doors in the Correnso area offering residents a Tsunado blast notification device. They will be visiting everybody in the Correnso area, starting with residents directly above the stopes. They will work outwards, but this is going to take some time. If you want a Tsunado device, you are in the Correnso area as shown on the map on the back page, and don't get a visit before stope blasting starts, please contact us. **0800 NEWMONT (0800 639 6668)**

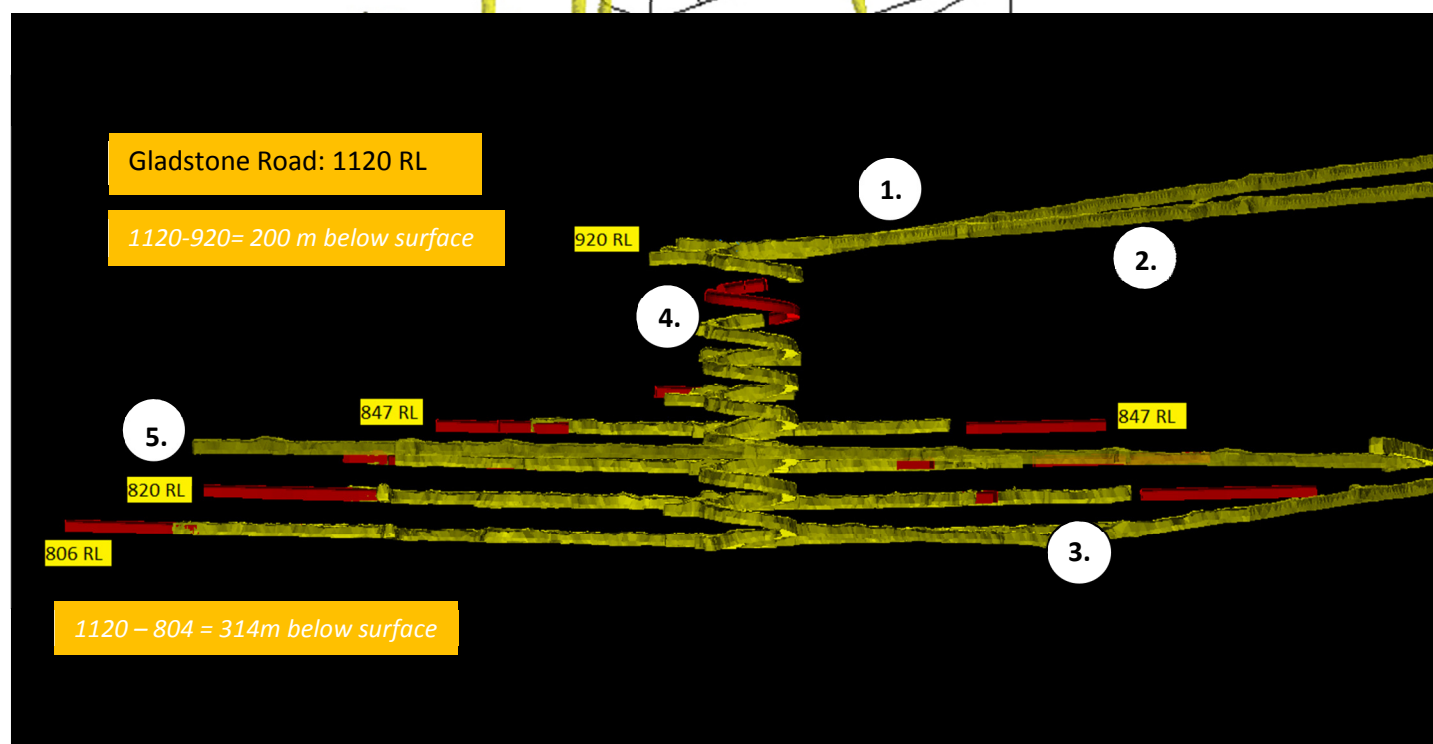


May 2015

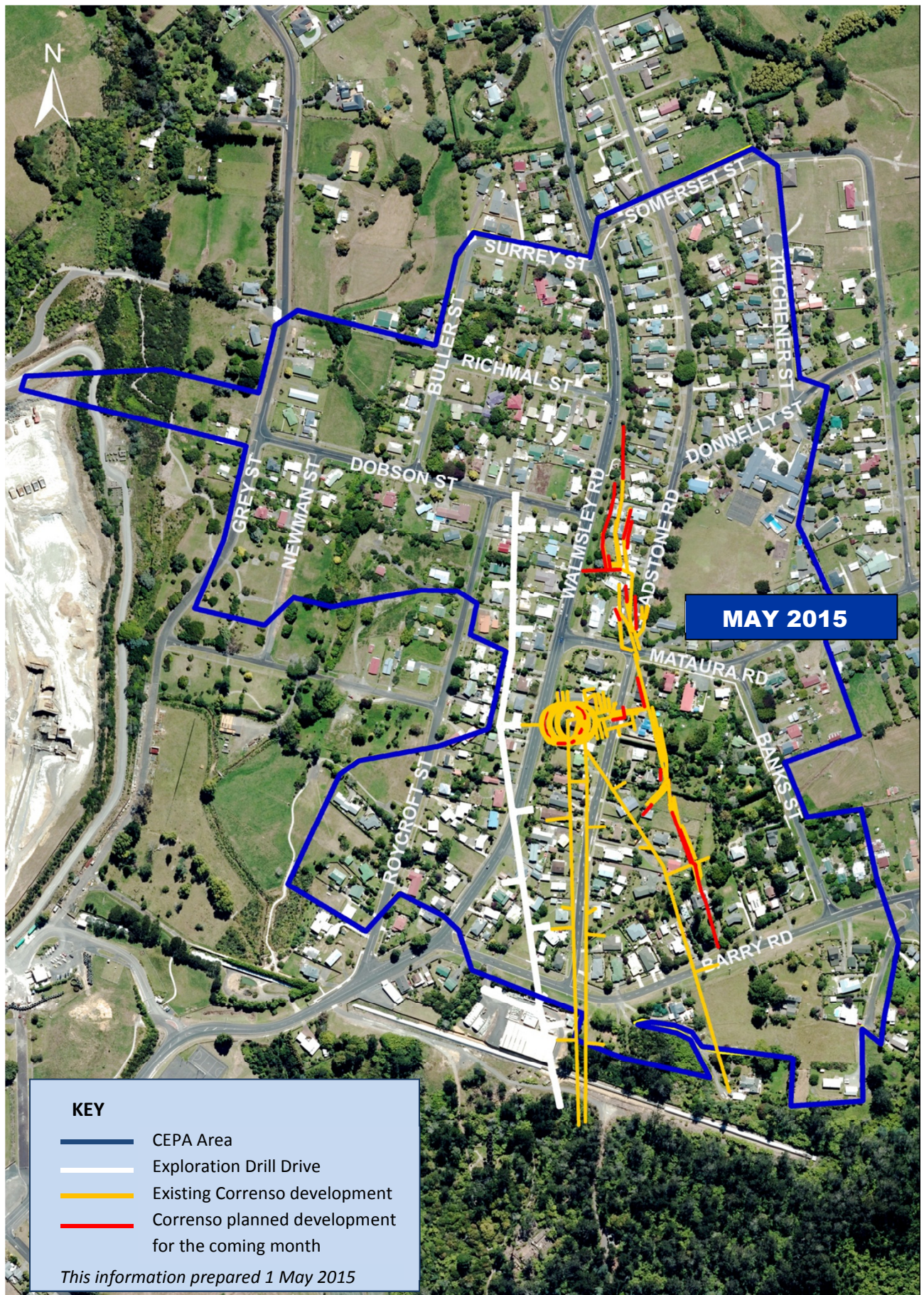
# KEY

- Existing development
  - This month's planned development
  - Property boundaries
- This information prepared 1 May 2015*

Sky Tower on the same scale







## Mine Development Plan

Published at the start of each month as required by Condition 22a of the Correnso Underground Conditions of Consent

**0800 NEWMONT (0800 639 6668)**