

Gold FM radio segment

For the last few years we have been answering questions in the weekly Gold FM radio segment on Thursday, and more recently, Wednesday mornings.

The idea was to provide a forum for people to ask questions about the planned Correnso mine development and for us to provide information in a timely manner.

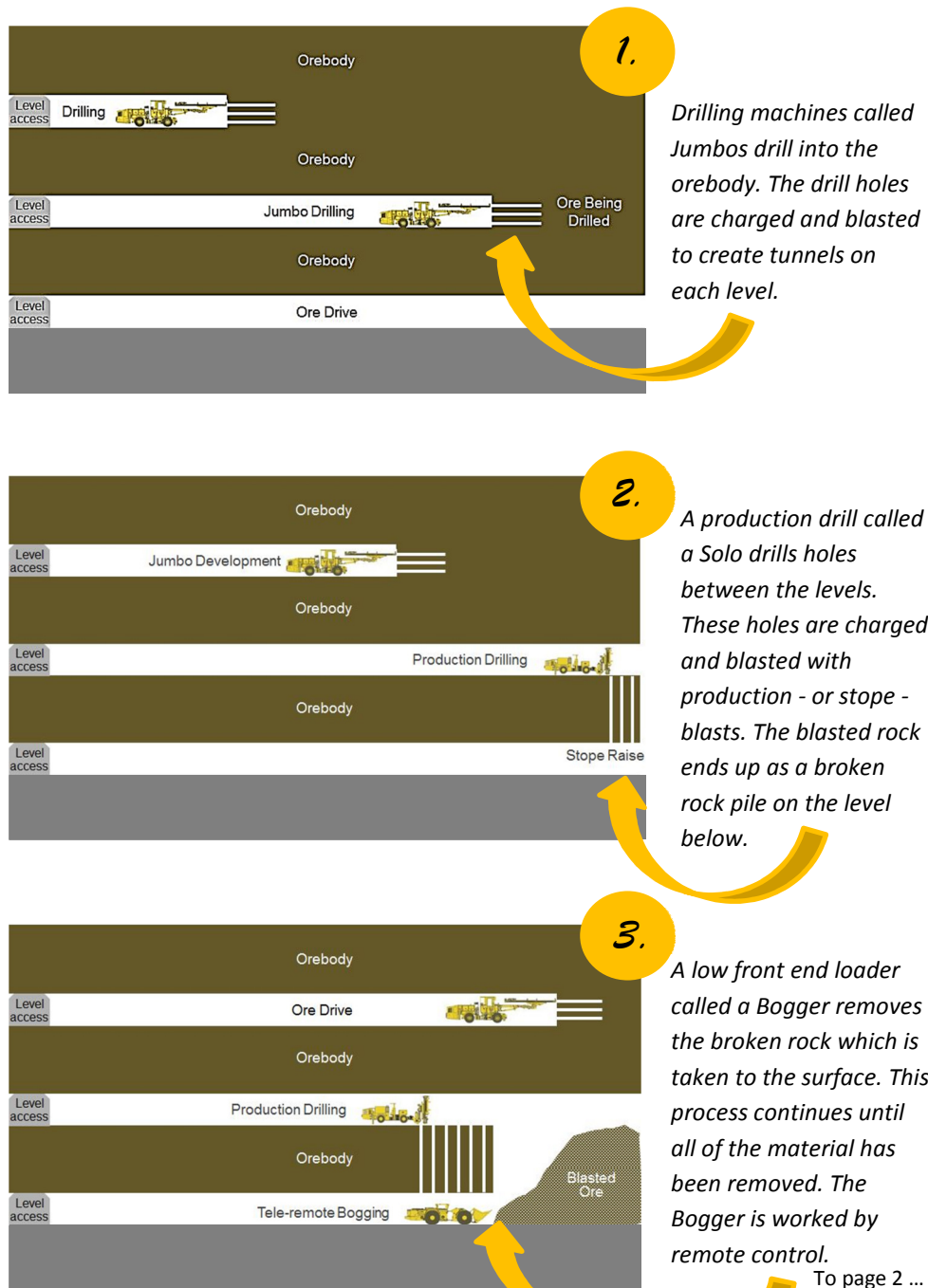
Now that Correnso is operating and the questions have reduced, starting in February we plan to reduce the radio sessions from weekly to monthly. We will schedule the segment to appear the week after the East Ender appears, so this will usually be the second Wednesday of the month.

If you have questions relating to the content of the East Ender or other specific questions please get them through to Gold FM before the day of the broadcast. As the questions we receive often require us to do some research or talk with other staff we will not be answering questions received on the day, and we will answer these in a subsequent session. The other public forum in which you may wish to present your questions are the Correnso Community Meetings. The next meeting is in March.

As usual, if you have a question or concern that you feel requires an immediate response, please do not hesitate to contact us on 0800 NEWMONT (0800 639 6668).

How can you mine 'bottom up'?

The concept of Correnso being mined 'bottom up' has proved to be a difficult procedure for us to explain. Below and over the page are the graphics presented to the November Correnso Community Meetings by underground manager Charlie Gawith. These graphics are a representation of a vertical slice through the mine.



Find out more
www.waihigold.co.nz

Contact us:
Donna Fisher, Company Liaison Officer
0800 NEWMONT (0800 639 6668)

NEWMONT

Underground machinery

Boggers, Jumbos, tele-remotes; it can all get a bit confusing. Here are the main vehicles used underground.



A Jumbo (above) is a large drilling machine with two drill arms (below) and is used to drill holes which are charged and blasted to create development drives.



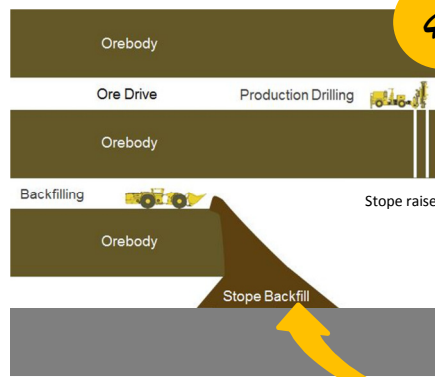
Production drilling is undertaken by a Solo drilling machine (below). These look just like a Jumbo, but have one drilling boom.



Ore and waste rock is loaded onto underground trucks by a Bogger (below). The driver can operate this machine from a distance by remote control.

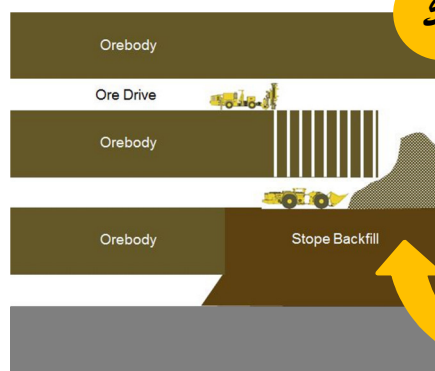


How can you mine 'bottom up'? *from page one*



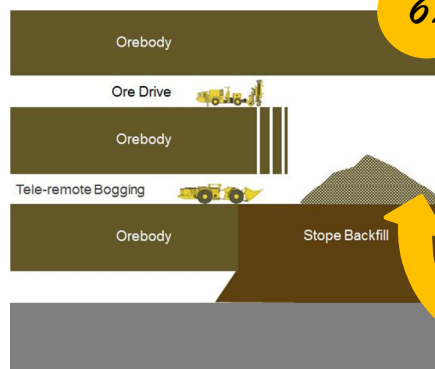
4.

When the stope is completely mined out backfill is tipped into the void area. This is usually done from the level above. The backfill material is non-gold bearing material which miners call waste rock. This was mined during the development phase.



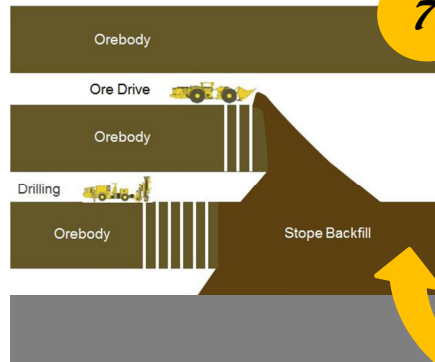
5.

The mined out stope is completely filled with waste rock. Mine vehicles drive on top of this material to mine out the next panel of ore.



6.

The newly mined ore is loaded out and trucked to the surface.



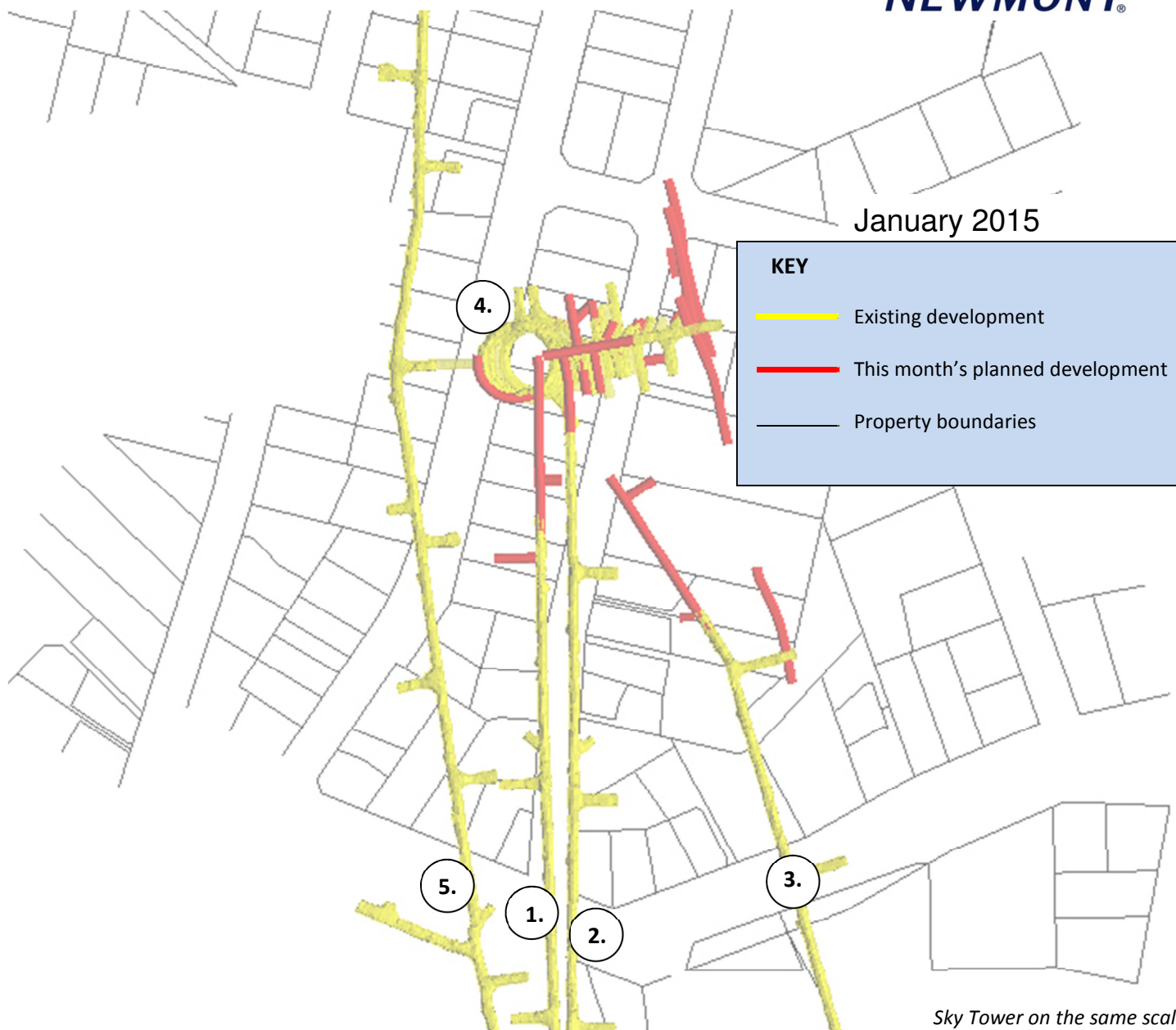
7.

The process starts another cycle as the stope is backfilled with waste rock and panels of ore are charged, blasted and loaded out.

Correnso Development



January 2015



Sky Tower on the same scale



Gladstone Road: 1120 RL

1120-915= 205m below surface

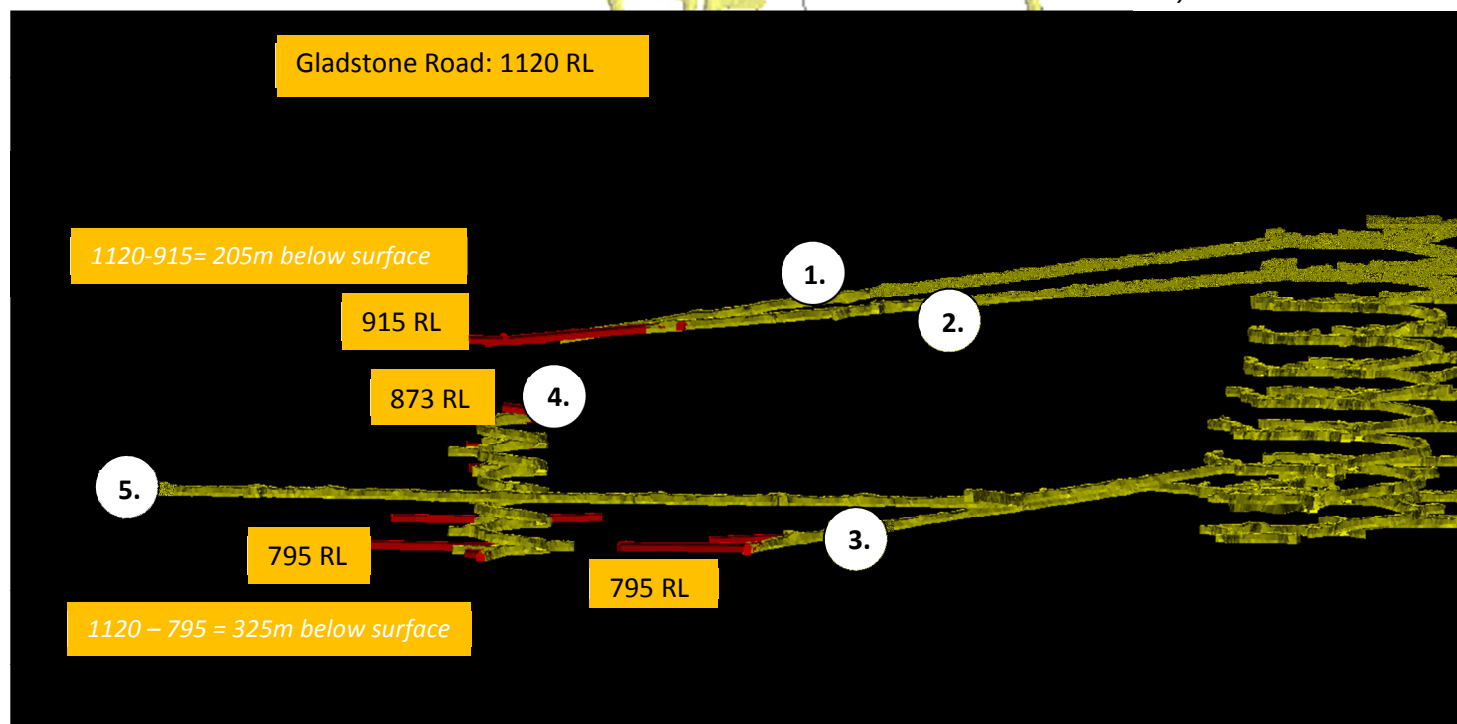
915 RL

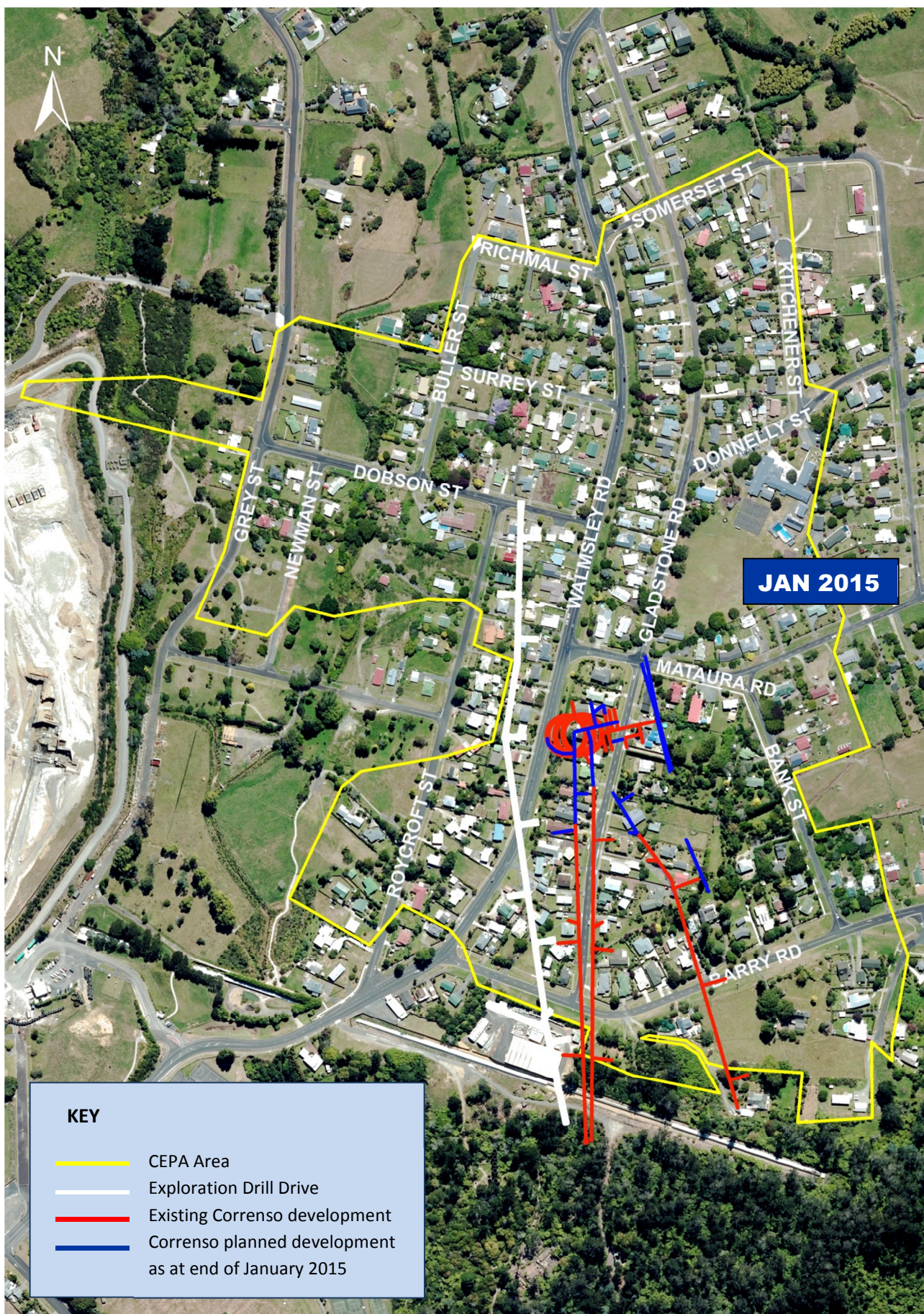
873 RL

795 RL

795 RL

1120 - 795 = 325m below surface





Mine Development Plan

Published at the start of each month as required by Condition 22a of the Correnso Underground Conditions of Consent

0800 NEWMONT (0800 639 6668)