

## Latest News

### A few SIMPle questions

You may have received a phone call on your landline or mobile phone from Phoenix Research who are randomly selecting residents and asking if they would be prepared to participate in a survey.

Each year we get an independent survey company to ask people who live in Waihi and the local area how they think we are doing, what we can improve on, and how things are in Waihi. The data collected forms part of the Social Impact Management Plan (SIMP) which is required as part of our consent conditions. You can find the previous SIMP on our website on the 'Reports and Plans' page. [https://www.waihigold.co.nz/wp-content/uploads/2016/02/2016-SIMP-Annual-Monitoring-Report\\_Final.pdf](https://www.waihigold.co.nz/wp-content/uploads/2016/02/2016-SIMP-Annual-Monitoring-Report_Final.pdf)

The survey is anonymous. OceanaGold gets a table of the results, but we don't know who said what. The survey company will ask you for your name so, if you wish, you can go into a draw to win one of three \$100 Prezzi Cards. They don't pass that information on to us.

If you get a phone call from Phoenix Research, we would encourage you to complete the survey and let us know what you think.

## Union Hill



Most locals know of the great walk from Kenny Street around the base on Union Hill to Clarke Street. Some regularly add Gilmour Reserve to their route, walking past the Tunnellers' Memorial and around Gilmour Lake. Others head around the base of Black Hill.

Regular walkers will have noticed that the cyanide tanks on Union Hill are now much more obvious. A number of invasive exotic tree species like wattle, privet and pine have been removed. This initiative is a partnership between OceanaGold and Waihi Heritage Vision. For some time, the heritage group had been concerned about the growth of large tree species around the historic foundations on Union Hill. Not only were they obscuring the historic remnants, but their roots had the potential to damage hundred year-old foundations.

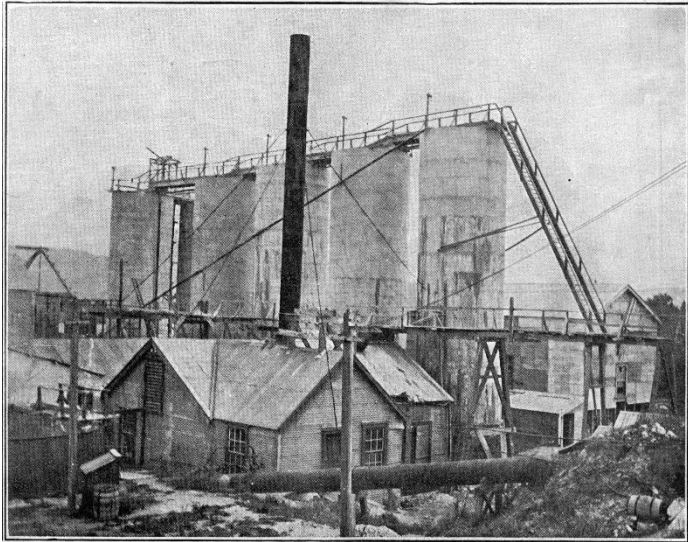


Now, OceanaGold and Waihi Heritage Vision will share their resources in a plan of work that will see large weed species controlled. Part of the plan will also see paths upgraded and interpretive signs placed at strategic locations. The intention is to retain the wilderness aspect of the area but at the same time provide ease of access and relevant information about Union Hill's rich history and current activities. Photographs from the area's past can be found on page two.

### Contact us:

Donna Fisher, Company Liaison Officer  
0800 WAIHIGOLD (0800 924 444)





WHERE GOLD IS EXTRACTED FROM THE ORE: NEW FERRO-CONCRETE PNEUMATIC TANKS AT THE WAIHI MINE, AUCKLAND.  
Photos. by W. Wilson.

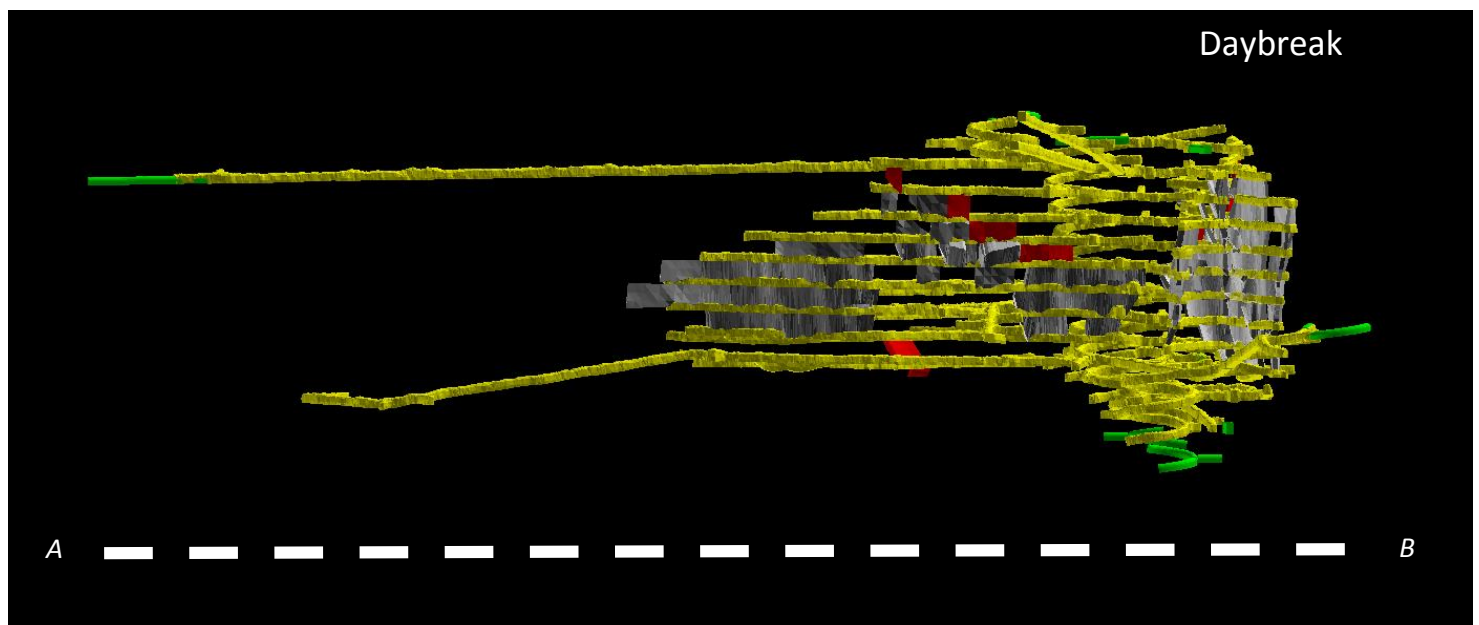
*Left: We know them as ‘the cyanide tanks’, but they are more correctly referred to as air agitation tanks.*

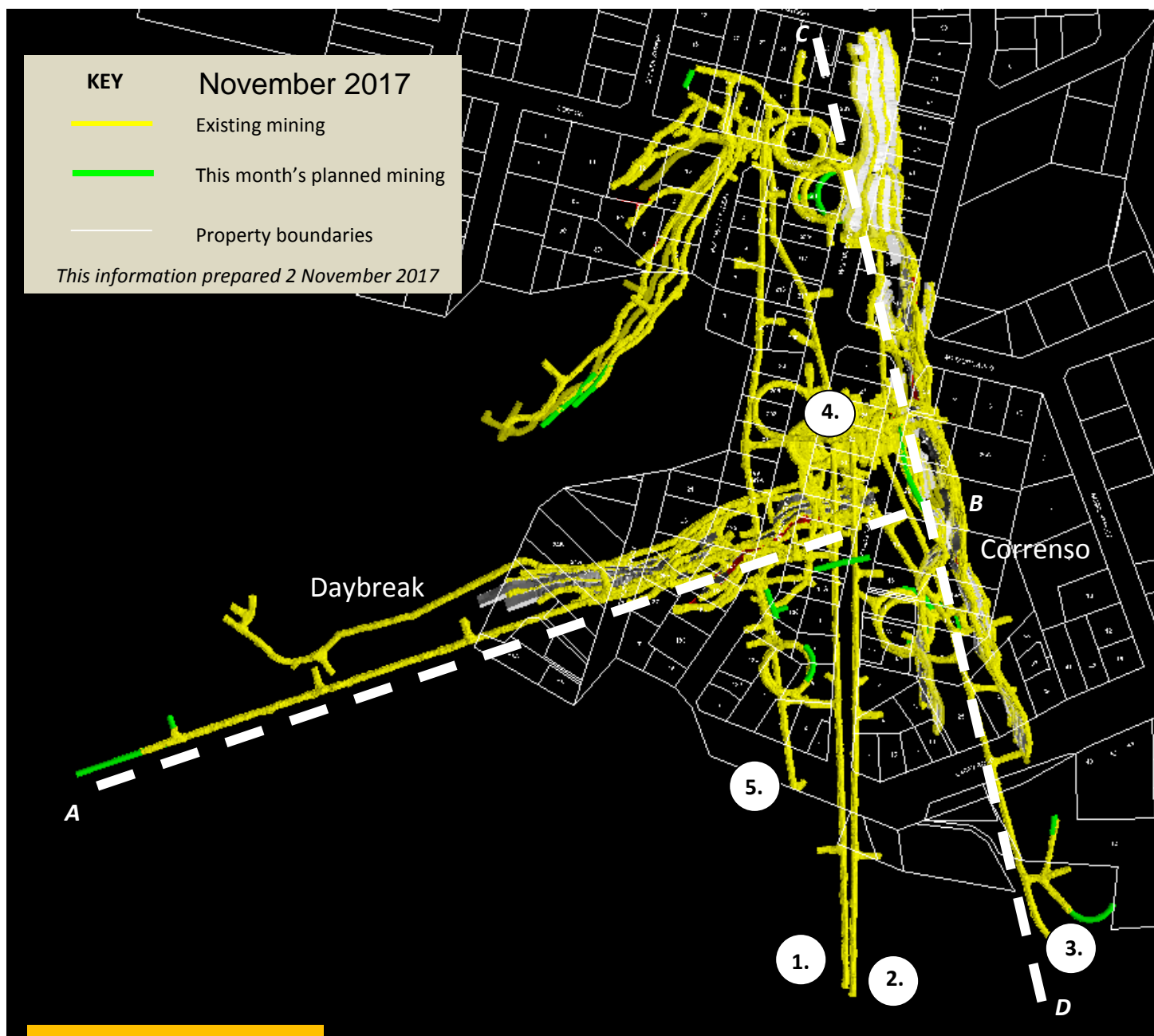
*Bottom left: The incline on Union Hill around 1899.*

*Bottom right: Union Hill and the Waihi Battery around 1897.*

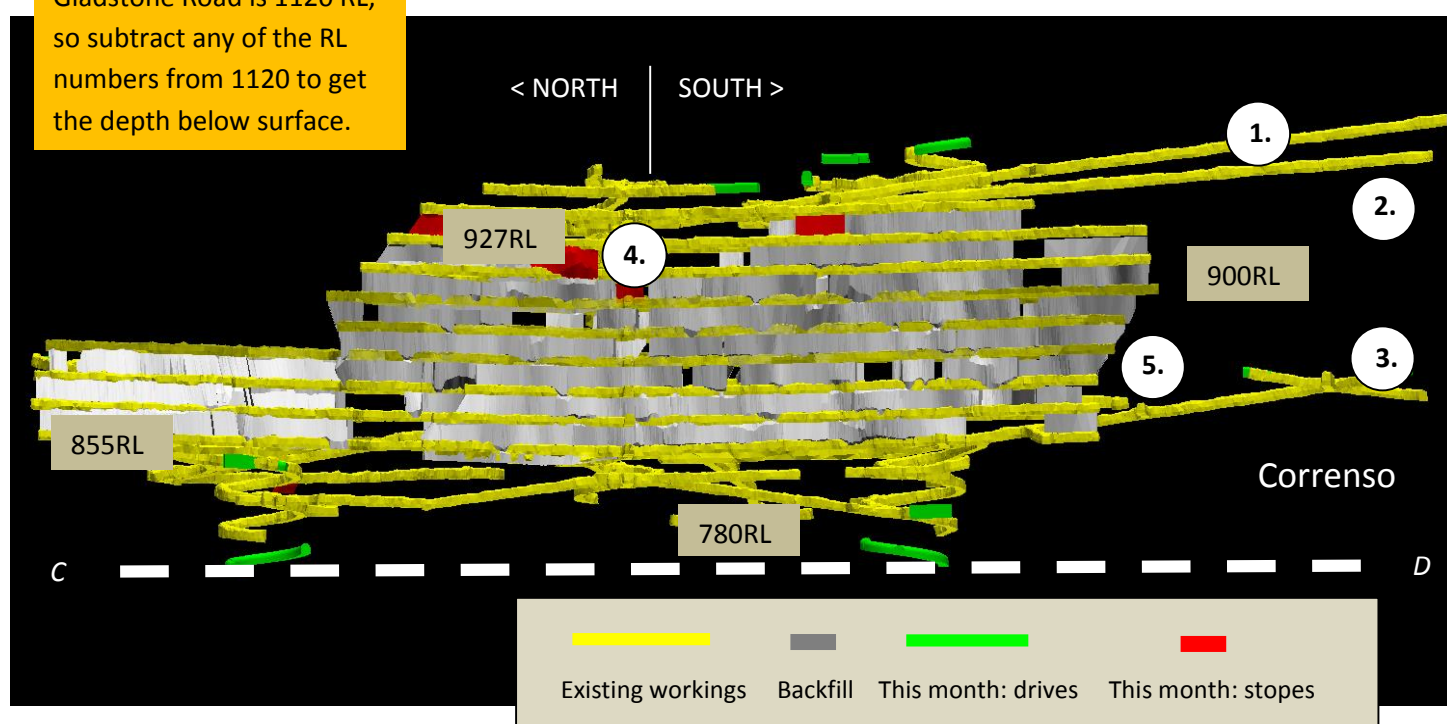


*The graphic below is a cross section through the underground workings on the dotted line A-B shown on page three.  
The Correnso cross section follows line C-D.*

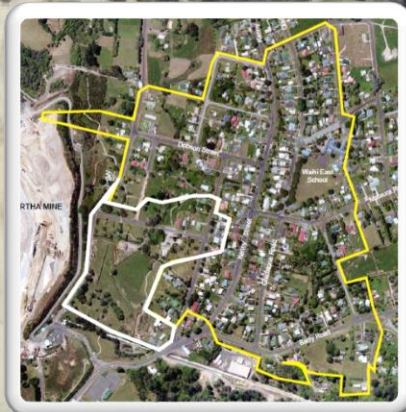




Gladstone Road is 1120 RL, so subtract any of the RL numbers from 1120 to get the depth below surface.







— CEPA Area  
— SUPA Area



## KEY

- Existing mining
- Planned mining for this month
- Backfill
- Stopes

*This information prepared 2 November 2017*

## Mine Development Plan

Published at the start of each month as required by Condition 22a of the Correnso Underground Conditions of Consent and Condition 14a of the Slevin Underground Conditions of Consent.

**0800 WAIHIGOLD (0800 924 444)**