

Latest News

Special Event: 30 July

On Sunday 30 July, mine staff and their families will be gathering at the Miners' Reflective Area at Gilmour Reserve to dedicate a plaque to our colleague Tipiwai Stainton who died underground in July of last year.

Tip will not be the only person we remember on that day. Since modern mining activity started in Waihi there have been another three tragic accidents resulting in loss of life. Over forty years ago, in 1976, Jim Murray was killed in an accident on what was then Martha Hill. Nick Moncur lost his life in 1999, and Doug Pourau died as a result of an accident in the Martha open pit in 2000.

All of these men will be remembered on Sunday 30 July. A plaque for each man will be placed adjacent to those already in place in memory of the Pike River 29. Family members of each man have been invited to attend. Members of the public are most welcome to join us on this day.

Activities start at 2.00pm at the Miners' Reflective Area, Gilmour Reserve. You can access this area by walking past Gilmour Lake, by using the George Street entrance for the reserve which is currently having a new parking area constructed, or by parking at the bottom of Clarke Street and walking a short distance to the reserve.

AEP

The first half of the year has ended. That means it is time for us to calculate AEP payments. This takes quite a while. When the amounts have been calculated and the cheques printed we hand deliver them to recipients. This will happen in August. About two weeks before that, we send a letter to those people who will be receiving payments, advising of the payment amount they can expect.

Each AEP payment period we get asked about eligibility and payment criteria. We reported this in the February *East Ender*. For those people who no longer have access to this information, here it is again.

The Programme

The AEP establishes an arrangement between OceanaGold and residents identified as experiencing some effect on amenity despite the mining operations being conducted within consent compliance limits.

An initial, one-off enrolment payment of \$500 is made to qualifying residents who join the programme, with additional payments made each six months for the life of the mine if that property qualifies within that period. The payment is calculated based on measured effects as monitored and recorded by OceanaGold during the preceding six months.

Eligibility

Monitoring results identify properties where the AEP qualifying criteria have been triggered.

Participation is voluntary and residents will be contacted by OceanaGold staff if it is determined that qualifying criteria have been met at their address.

While the majority of residents are happy to receive AEP payments, we understand that some may choose not to be part of the programme. However, a resident who initially decides not to join the programme will have the option of joining at any subsequent time as long as the qualifying criteria have been met.

(continued on page two)

Contact us:

Donna Fisher, Company Liaison Officer
0800 WAIHIGOLD (0800 924 444)

AEP

(continued from page one)

Qualifying criteria

- Tenants of rental accommodation must have lived at the address for a minimum period of six months before they will be enrolled to receive AEP payments.
- Two or more blasts in one month with ground vibration equal or greater than 1.5mm/s in magnitude.

Payment Rates

Payments are based on OceanaGold Waihi's monitoring results and a schedule of rates that increases payments with increasing magnitudes of vibration.

While the payments will vary depending on the mine-related effects experienced, a 'minimum' payment of \$250 has been established that will apply to all qualifying residents in any six-month period.

Rates are adjusted annually in line with the Consumer Price Index (CPI).

Tax Liabilities

IRD has issued a product ruling which states that payments received by persons under the AEP are not taxable income and it is not necessary for you to declare this money. Work and Income advises us that qualifying residents receiving national superannuation or a benefit should talk with their case manager prior to receiving any payment.

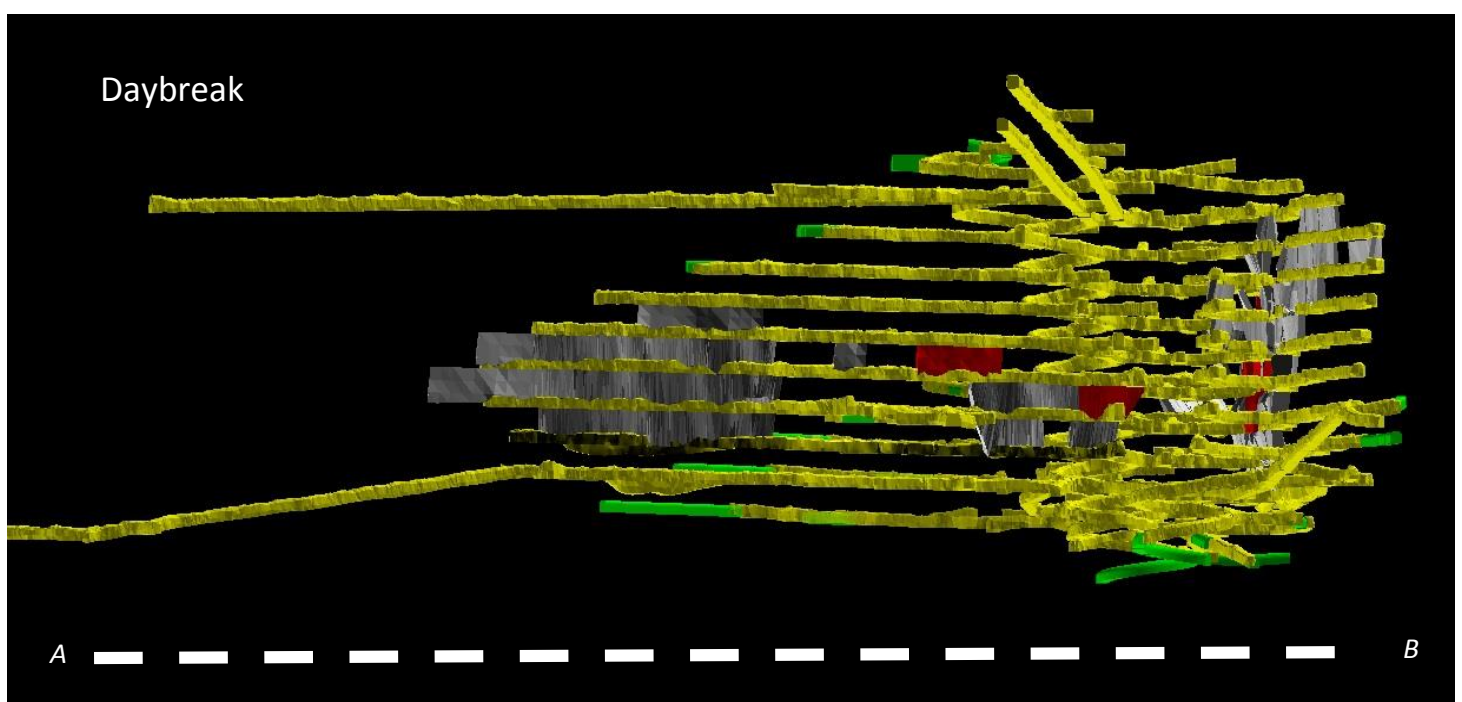
How is AEP calculated?

We use BlastHub monitoring results to model the vibration effects that may be experienced at various locations and to calculate payments.

Each six-month period, detailed vibration reports for the locations are exported from BlastHub. The data are filtered to identify the qualifying properties. A qualifying property is one that registered two or more blast events in any month that resulted in a vibration level of 1.5mm/s (peak particle velocity) or more during the reporting period.

It is important to note that just because you got an AEP payment for the last period, this does not mean you will receive a payment for this six-month period. Our operations in the mine move, and this has an effect on vibration levels measured at surface and any consequent payment.

We've added the Daybreak workings to our monthly mine plans. The graphic below is a cross section through the underground workings on the dotted line A-B shown on the page three. The Correnso cross section follows line C-D.

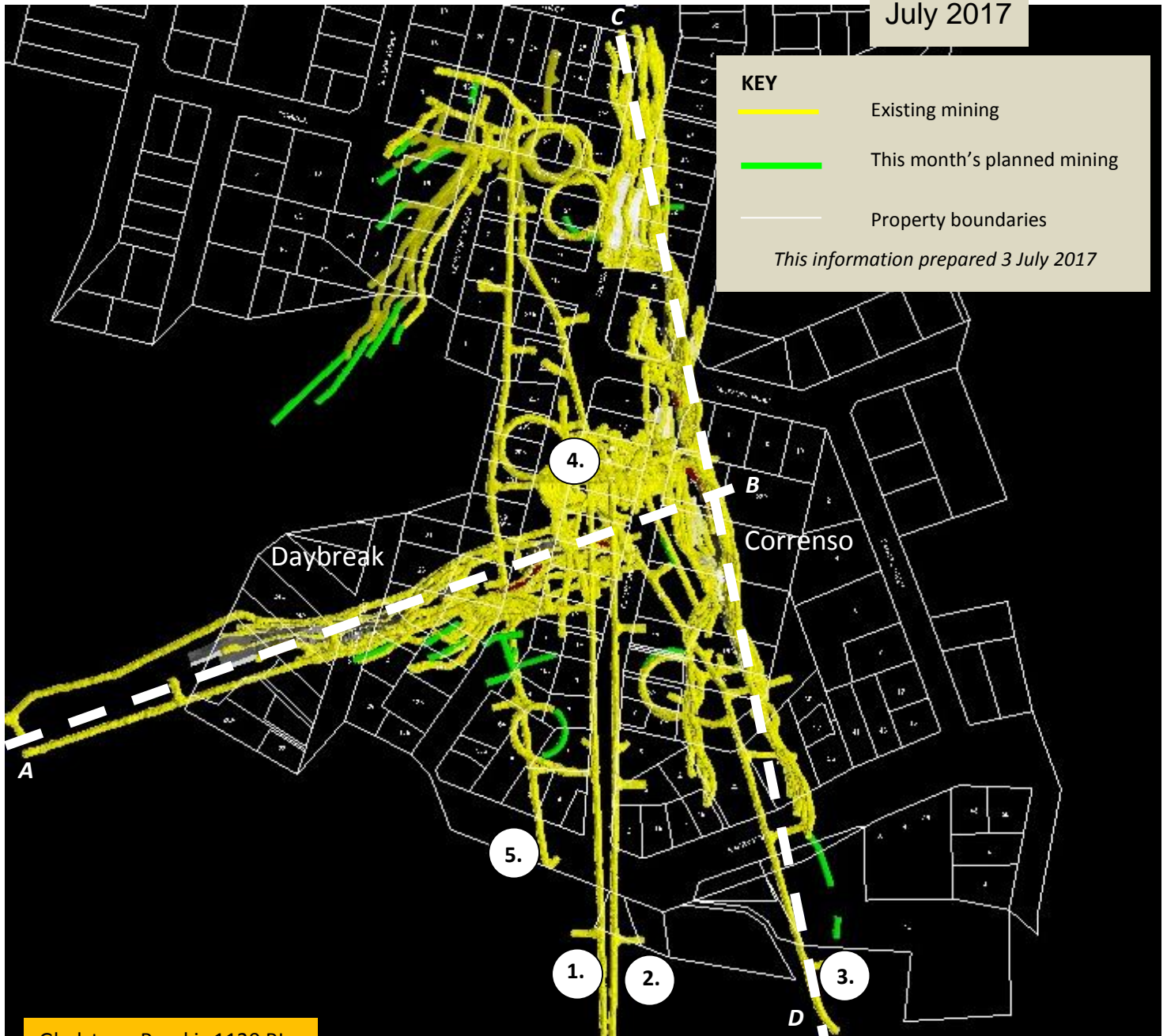


July 2017

KEY

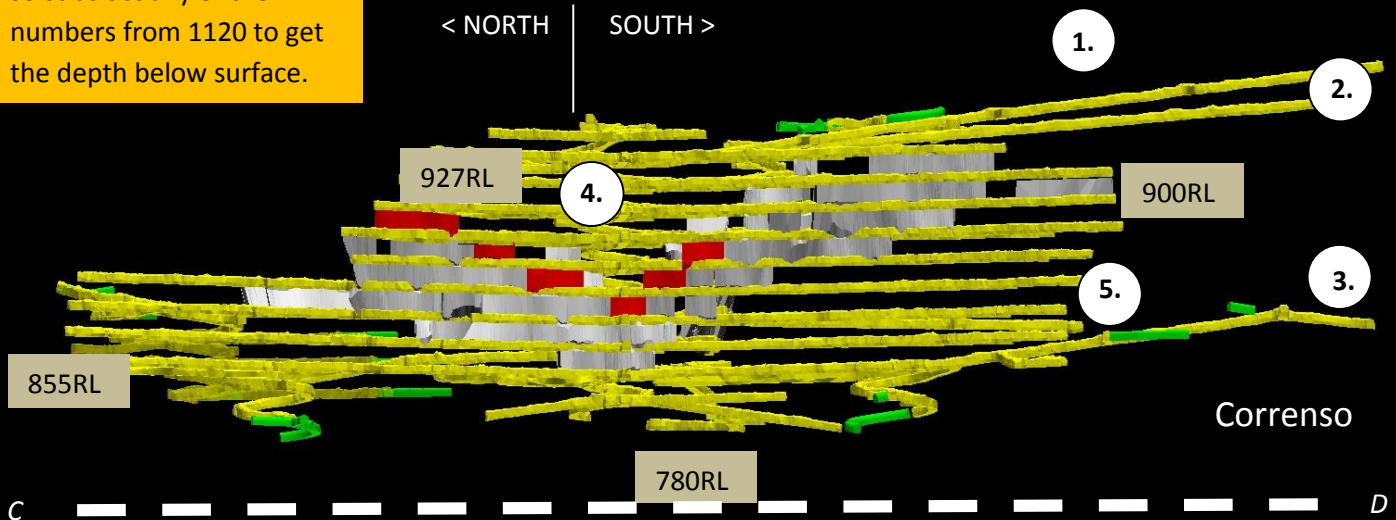
- Existing mining
- This month's planned mining
- Property boundaries

This information prepared 3 July 2017



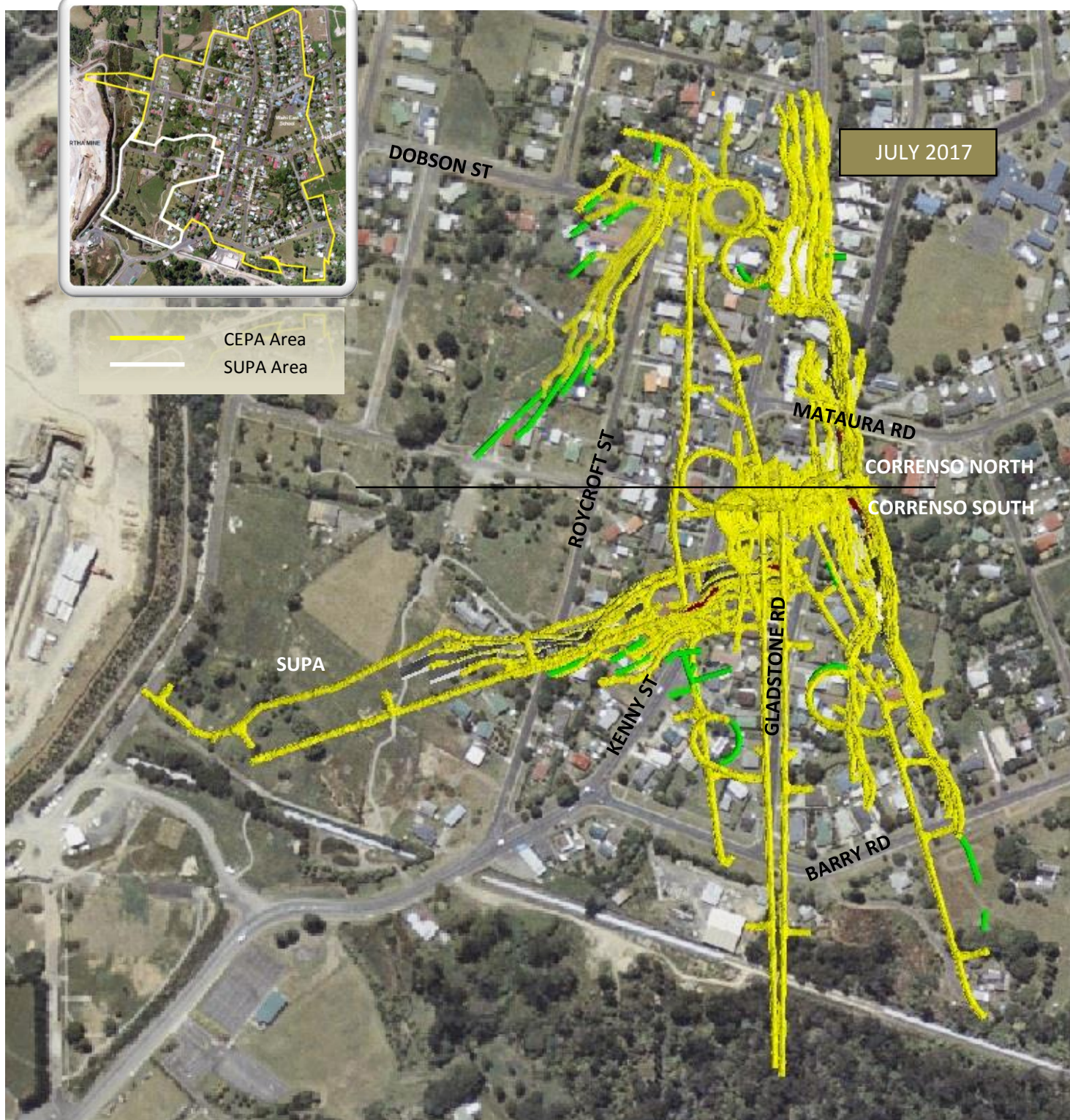
Gladstone Road is 1120 RL, so subtract any of the RL numbers from 1120 to get the depth below surface.

< NORTH | SOUTH >



Existing workings Backfill This month: drives This month: stopes

CEPA & SUPA BOUNDARIES



KEY

- Existing mining
- Planned mining for this month

This information prepared 3 July 2017

Mine Development Plan

Published at the start of each month as required by Condition 22a of the Corrensen Underground Conditions of Consent and Condition 14a of the Slevin Underground Conditions of Consent.

0800 WAIHIGOLD (0800 924 444)