

PROPOSED CHANGE TO THE MARTHA MINERAL ZONE

In July 2021, OceanaGold shared details of a proposed change to the Martha Mineral Zone.

The existing Martha Mineral Zone, as defined within the Hauraki District Plan, allows for surface mining within its boundaries. The proposed expansion of the Martha Pit, as part of the Martha Open Pit Project, would first require a change to the District Plan to increase the boundary to include all the land parcels necessary to support the expansion (this is inclusive of areas required for rehabilitation).

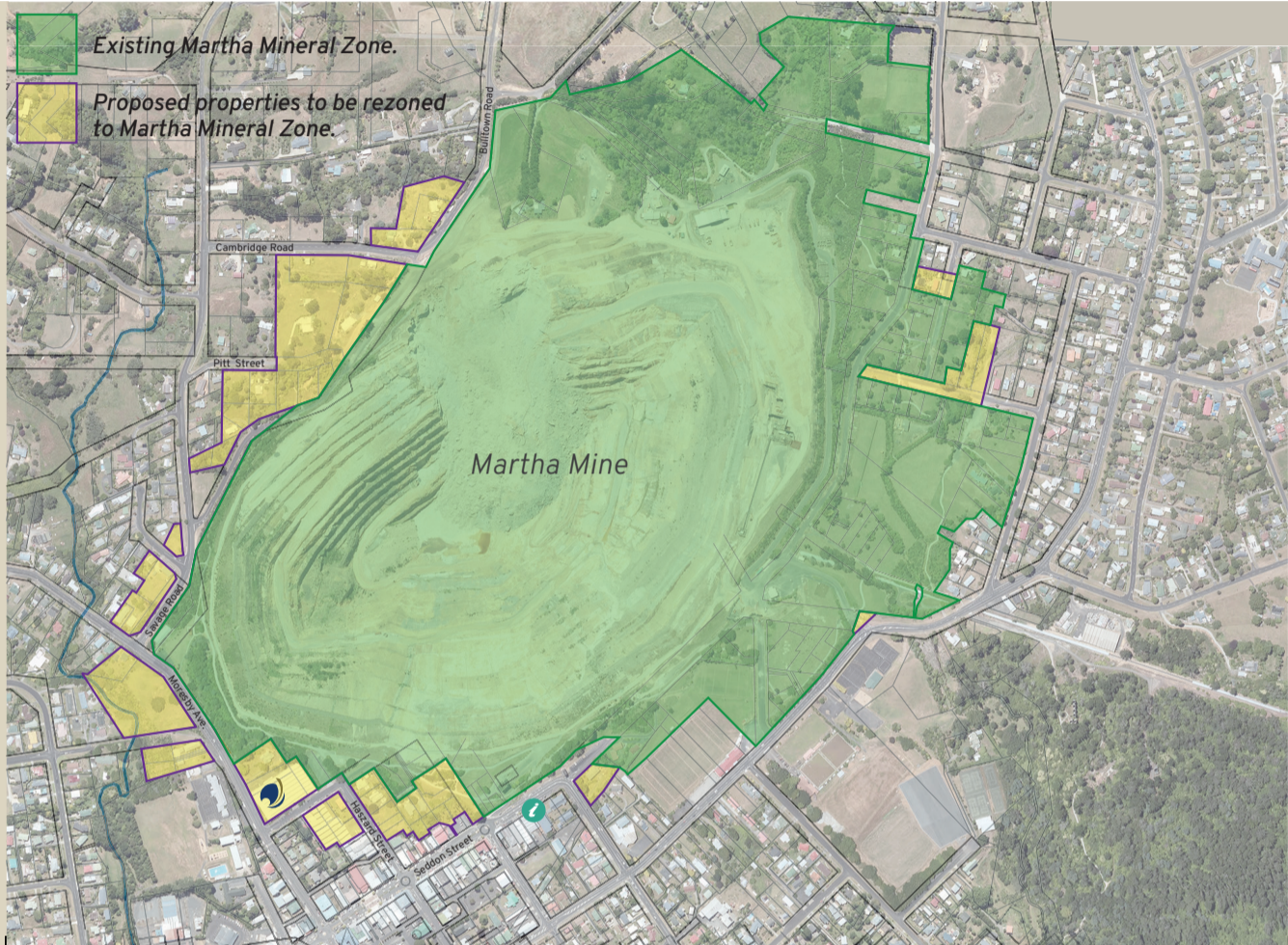
Our application for this change has been lodged, and we are now in the process of returning our "Request for Information" (RFI) from the Hauraki District Council (HDC) in support of our application.

In complex applications like this, once the application has been formally accepted, regulators often request additional information in specific areas once their technical experts have reviewed the application.

As shown in the diagram, the Martha Mineral Zone is proposed to be expanded in the vicinity of Moresby Avenue, Pitt Street, Haszard Street, and Seddon Street.

No privately owned land will be rezoned as part of the plan change application.

OceanaGold will shortly be lodging our response to the RFI in support of an application to the HDC for a change to the District Plan.



Extending the life of mining in Waihi was a key commitment OceanaGold made to the New Zealand Government when the company acquired the Waihi Operation in 2015.

A CHANGE TO THE MARTHA MINERAL ZONE DOESN'T MEAN WE CAN MINE

Any mining activity is controlled by the Resource Management Act and resource consents would still need to be sought should the plan change be approved.

Once the application, and supporting responses to RFIs, have been reviewed by the HDC, it will be publicly notified. Anyone, including members of the public, businesses, community groups, and councils

will be given the opportunity to make a submission on the plan change request.

Once the HDC has had time to review the application in its entirety, we will provide further details on the next steps involved in the application process. This includes how you can have your say through public submissions.

IF YOU HAVE ANY QUESTIONS OR CONCERNS, PLEASE CONTACT US.

Community Engagement Line: 0800 924 444 | Project Information Office: 86 Seddon St., Waihi.

Email us via our website: www.waihigold.co.nz