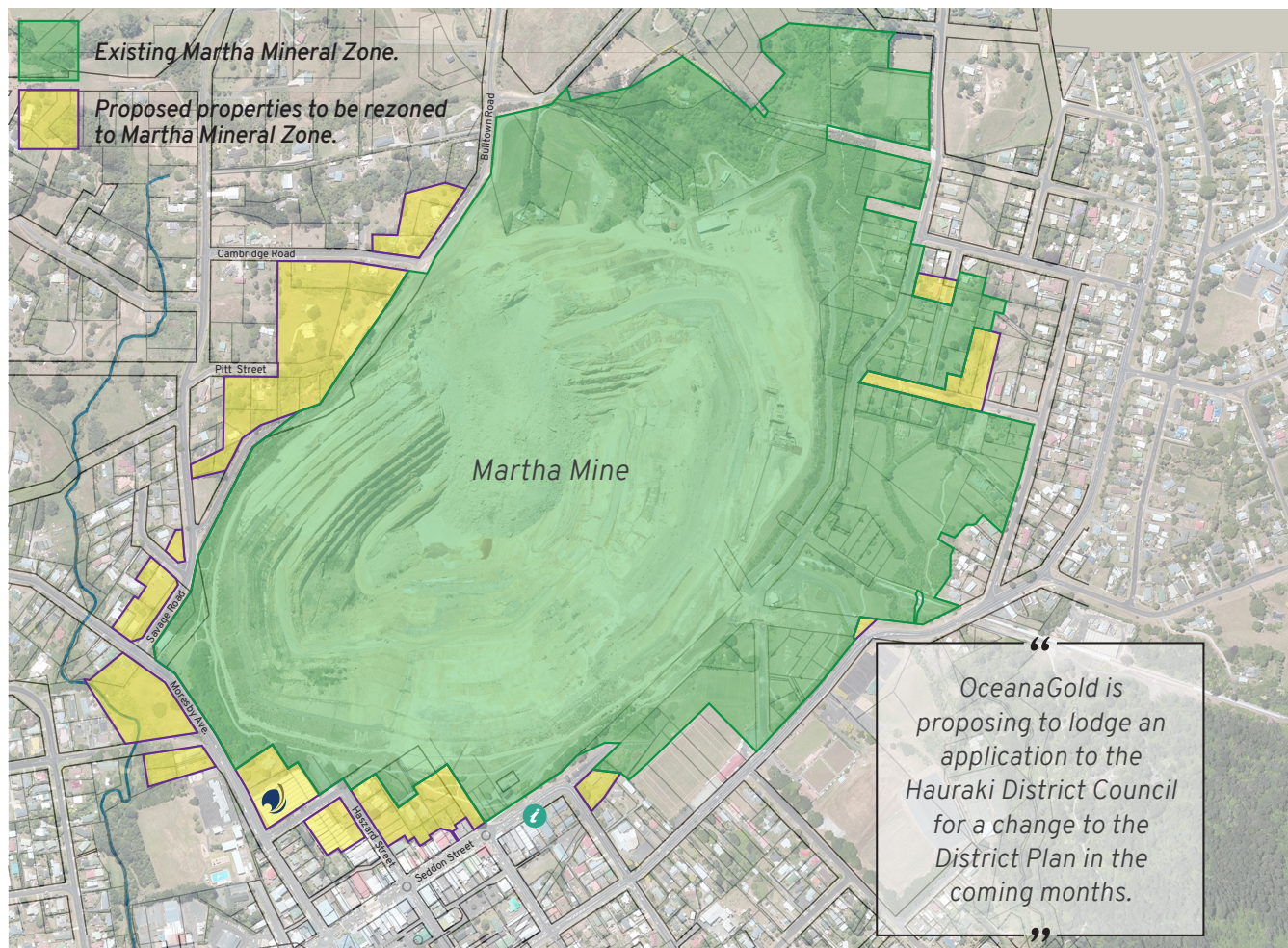


## Proposed Change to the Martha Mineral Zone

The existing Martha Mineral Zone, as defined within the Hauraki District Plan, allows for surface mining within its boundaries. The proposed expansion of the Martha Pit, as part of the Martha Open Pit Project, would require a change to the District Plan to increase the boundary to include all the land parcels necessary to support the expansion (this is inclusive of areas required for rehabilitation).



As shown above, the Martha Mineral Zone is proposed to be expanded in the vicinity of Moresby Avenue, Pitt Street, Haszard Street, and Seddon Street.

No privately owned land will be rezoned as part of the plan change application.

A change to the Martha Mineral Zone doesn't mean we can mine. Any mining activity is controlled by the

Resource Management Act and resource consents would still need to be sought after the plan change has been approved.

Anyone, including members of the public, businesses, community groups, and councils can make a submission on a plan change request. Once the application has been made, it will be publicly notified.

## Heritage New Zealand Visit

On the 13th and 14th of July, Waihi Heritage Vision and OceanaGold co-hosted Bev Parslow (Area Manager Mid Northern) and Robin Byron (Senior Conservation Architect) from Heritage New Zealand.

Bev and Robin led a presentation at the Waihi Memorial Hall to members of the public about heritage preservation and conservation aspects. Part of the visit involved local landmarks and buildings, including St. John's Anglican Church, the Cornish Pumphouse, the Goldfields Railway Heritage precinct, and the Waihi Gold Dredging Plant and Tramway.

Bev and Robin also toured the OceanaGold processing plant before heading to Union Hill, where Warwick Buckman (Chair of Waihi Heritage Vision) and Russell Squire (OceanaGold Senior Environmental Advisor) explained current preservation and protection plans in place for the Union Hill mining artefacts.

Our thanks go to Warwick from Waihi Heritage Vision for hosting and organising the visit, Bev and Robin from Heritage New Zealand for presenting and making the time to see so many aspects of Waihi's history, and to Russell for providing insight into how we are helping to manage these mining artefacts into the future.



Community Engagement Line: 0800 924 444  
Project Information Office: 86 Seddon St., Waihi  
Email us via our website: [www.waihigold.co.nz](http://www.waihigold.co.nz)