

PROPOSED CHANGE TO THE MARTHA MINERAL ZONE

The existing Martha Mineral Zone, as defined within the Hauraki District Plan, allows for surface mining within its boundaries. The proposed expansion of the Martha Pit would first require a change to the District Plan to increase the boundary to include all the land parcels necessary to support the expansion (this is inclusive of areas required for rehabilitation).

OceanaGold lodged an application to the Hauraki District Council (HDC) for a change to the District Plan, which has now been publicly notified

WHAT IS BEING PROPOSED?

The key changes to the Martha Mineral Zone include:

- Expanding the area covered by the Martha Mineral Zone to include additional properties owned by OceanaGold (which are currently zoned Residential, Low Density Residential or Town Centre).
- Updating the introductory text for the Martha Mineral Zone to further outline the expectations for activities occurring within the zone.
- Updating the zone provisions to ensure adverse effects associated with any new mining activities are appropriately managed, including by:
 - Managing potential amenity effects (e.g. noise and vibration);
 - Ensuring that the Martha Pit is appropriately rehabilitated at the completion of mining activities; and,
 - Recognising the cultural associations with the Martha Pit (Pukewa).
 - Addressing the interface between the Martha Mineral Zone and the adjacent Town Centre and Residential zones.

A change to the Martha Mineral Zone doesn't mean we can undertake new mining beyond what is already authorised. OGNZL would still need to make applications for resource consents to authorise any future expansion of the pit, and as has been the case previously, OGNZL would expect any such resource consent application for pit expansion to be subject to a full public notification and hearing process.

WHAT IS A PRIVATE PLAN CHANGE REQUEST?

A private plan change request is a formal application made to the Hauraki District Council to change the Hauraki District Plan in some way - for example, a change to the zoning of properties or changes to the rules that apply in a particular zone. Any person can make a request to change the Hauraki District Plan.

There are specific requirements set out in the Resource Management Act 1991 (RMA) regarding the preparation

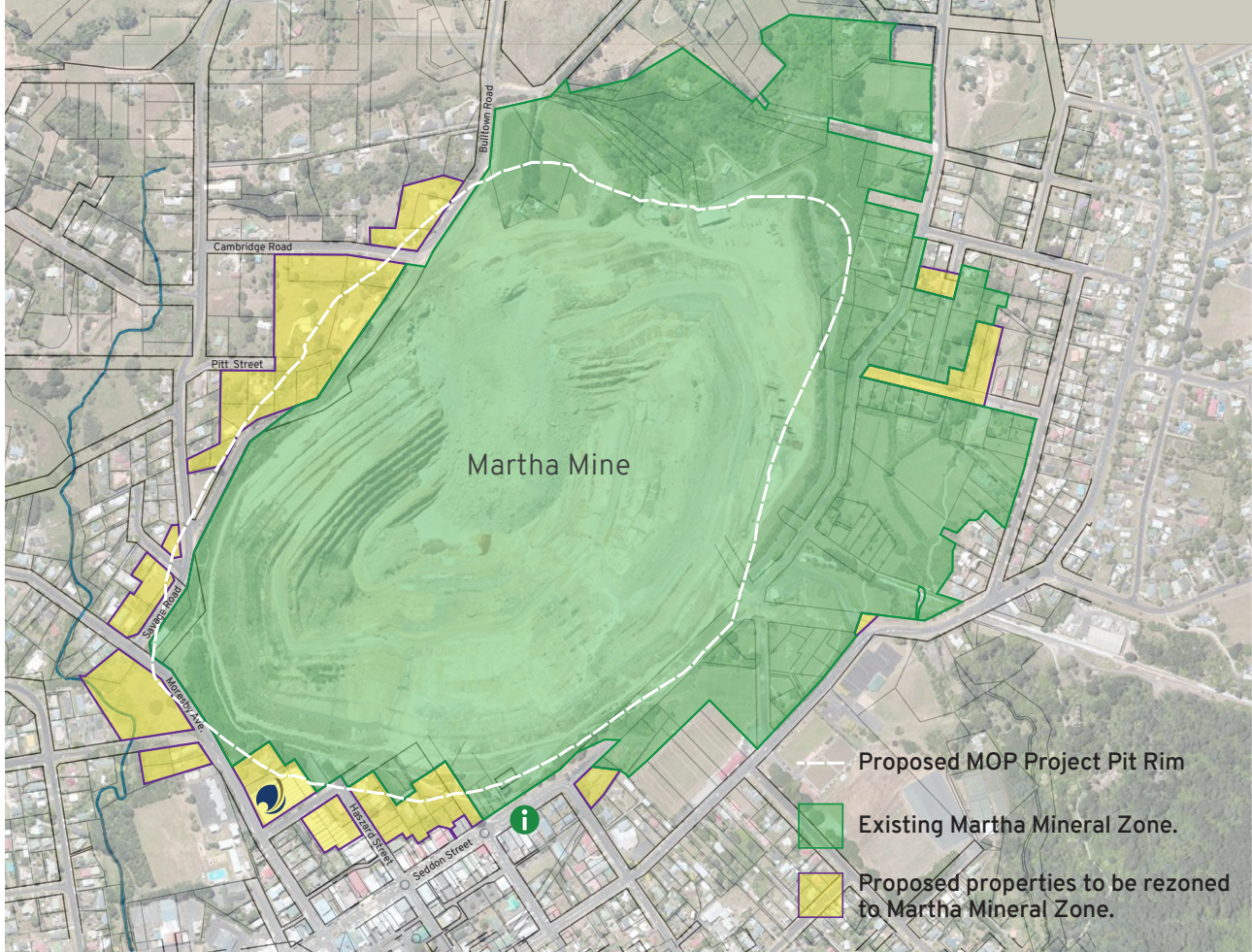
and assessment of plan change applications. These cover what must be included in a private plan change request, how the request will be processed, and how people can be involved. All potential changes in environmental effects as a result of the plan change must also be assessed.

Private plan changes are generally publicly notified,

meaning any person who wishes to make a submission (either supporting, opposing, or seeking amendments to the change) can do so within the closing date for submissions. There is also an opportunity for further submissions before a hearing is held by a panel appointed by the Hauraki District Council.

NEWSPAPER UPDATES

We will keep you updated through the Hauraki-Coromandel Post newspaper.



WILL THE PLAN CHANGE AFFECT ME?

As noted in the figure above, the extent of the Martha Mineral Zone is proposed to be expanded in the vicinity of Moresby Avenue, Pitt Street, Haszard Street and Seddon Street. No privately owned land will be rezoned as part of the plan change application. Updates to the provisions of the Martha Mineral Zone are proposed to further manage potential impacts from activities occurring within the zone, and set more direction in terms of the site’s rehabilitation once mining activities permanently cease.

Anyone, including members of the public, businesses, community groups and councils can make a submission on

a plan change request. Once the application has been reviewed by the Hauraki District Council, it will be publicly notified. If you would like to make a submission on this plan change, we encourage you to do so by the closing of the submission date.

Once the plan has been changed, OceanaGold would then make resource consent applications for the expansion of the Martha Open Pit. This would be as a discretionary activity and would require a full assessment of all of the potential effects of additional mining in the zone.



HOW DO I FIND MORE INFORMATION?

OceanaGold Waihi is committed to a long-term partnership with the community and it is important to us that you have reliable information about what we are proposing and what it means to you.

PROJECT INFORMATION OFFICE

The OceanaGold Waihi Project Information Office in Seddon Street has staff available to answer questions and listen to your views and ideas.

Opening hours are; 10.00 am to 2.00 pm, Monday to Friday.

IF YOU HAVE AN IDEA, CONCERN OR QUESTION, WE WANT TO HEAR FROM YOU.

You can contact us via our website; www.waihigold.co.nz or visit our Project Information Office; **86 Seddon Street, Waihi.**

Our Free Community Engagement Line **0800 924 444** is available 7 days.