

# Project Martha Community Meeting

Thursday 10 December 2020

The following is a record of the Project Martha community meeting held at 3pm on 10 December 2020. Where possible, we have tried to capture individual contributions at the meeting but these do not purport to be verbatim notes.

## Welcome

Tim Clarke introduced himself (independent facilitator) and Louise Fielden (independent minute taker) and welcomed everyone to the 4<sup>th</sup> Project Martha meeting.

Tim explained that these meetings are part of Oceana Gold's resource consent. These meetings are specifically about the Martha mine development.

Tim said: The meeting is being recorded because a recording is being posted on the website so that those of you who attend the meeting and other people who are interested can listen to that recording if they are not able to attend the meeting. Louise and I also use that to create the independent minutes to make sure that they're accurate – they are not every single word that is spoken in the meeting but they cover the important points.

*(Everyone was asked to introduce themselves – see attendance list at the end of these minutes.)*

## Purpose of meeting

### Project Martha

#### Purpose of meeting

Under Condition 99 of the Project Martha consents we are required to hold community meetings quarterly during the first year of mining activities provided for under this consent, and six-monthly thereafter.

a) Present information from the preceding six months on the following:

- i. A description of the mining activities provided for under this consent that have been undertaken;
- ii. A summary of relevant environmental results;
- iii. Progress with the IRP property purchase programme;
- iv. Progress on any matters raised at the preceding meeting;

b) Receive feedback from the meeting attendees on the consent holder's activities and progress on the matters listed above.

Donna Fisher said: I'm Donna Fisher the Company Liaison Officer. These meetings are a consent requirement under the Project Martha consent conditions. Currently they are held every 3 months. In the New Year they will go to a 6-month interval but we will let you know in the newsletter when the next meeting will be. The information we have to present is mining activities, summary of relevant environmental results, progress with any IRP property purchase programmes which at this stage don't really affect Project Martha, progress on any matters that were raised at the last meeting and receive feedback from you all on our activities and progress on the matters listed.

Tim said: Thank you Donna. Just before the next slide, welcome Kim.

Kim Calderwood said: Hi all, apologies for being late. I'm External Affairs and Social Performance Manager.

# Project Martha

## Outline

- ▶ **PROJECT**
- ▶ **ENVIRONMENT**
- ▶ **SOCIAL/COMMUNITY**
- ▶ **PROJECT MARTHA**
- ▶ **REX PROJECT**
- ▶ **CHRISTMAS HOURS**

3

INNOVATION PERFORMANCE GROWTH

OCEANA GOLD

Donna said: We're going to talk a bit about Project Martha, Russell will present some environmental results slides, a bit on social and community, obviously Project Martha and we're probably going to concentrate more today on the Rex project and some Christmas hours information for you all so you know how to get hold of us over the break.

# Project Martha



4

INNOVATION PERFORMANCE GROWTH

OCEANA GOLD

Donna said: You would have got this on the back of your Martha Matters this month and it shows you all where we've been in the yellow and the green is where we intend going for the following month. Did you want to say anything about that slide Jol?

Jol Jardine said (pointing at slide 4 above): You saw the photo at the start, that was the breakthrough photo 18 months or 2 years ago, we talked about the second breakthrough at the last meeting so that's up and running and we're actually exhausting air out of both of those at the moment. You can see this is on the higher level, at the 920 that we come out, this is the Rex area that we're going to talk about and you can see

we've branched out and we're going up and down on declines there and starting to access the Royal. We call this the Royal area, branching up and down on declines there. This we call the Edward, this is the Royal West and this is the Empire. You can see declines over each other there. These ones aren't far from breaking through so if you could imagine they are 120m apart and ramping up and down and nearly going to join, so that's why they look quite dense, we have nearly done all of our access there. We've got some big pumps down on the 800 level dewatering the old workings, they're all up and running.

Tim said: Jol, on the map the gold lines are the areas that have been mined, and the green are next month?

Jol said: Yes, that's the plan. At the moment, as we talked about previously, we're ramping up development so that's how much tunnelling we do each month. Last month we were just over 800m total, we developed 800m of tunnel, to give you an idea it's nearly 1km. We want to get to 1km every month for the next 3 or 4 years. The yellow mainly is the access development into the ore bodies and we drill it out of the ore bodies to get to the gold. You can see in the green that will equate to about 900m.

Jane Murray said: That one there, down the bottom towards the mining building – that must be where I'm getting the vibrations from and the noise.

Jol said: That's what we call Edward. Russell will probably talk more about that later, but yes that is where that's coming from and that's probably closer to you than it ever has been before.

Jane said: Yes, because I've been hearing those for quite a few months and nobody bothered telling me or anything and then when I rang Donna she said it wasn't you and then a couple of days later she rang back to say it was.

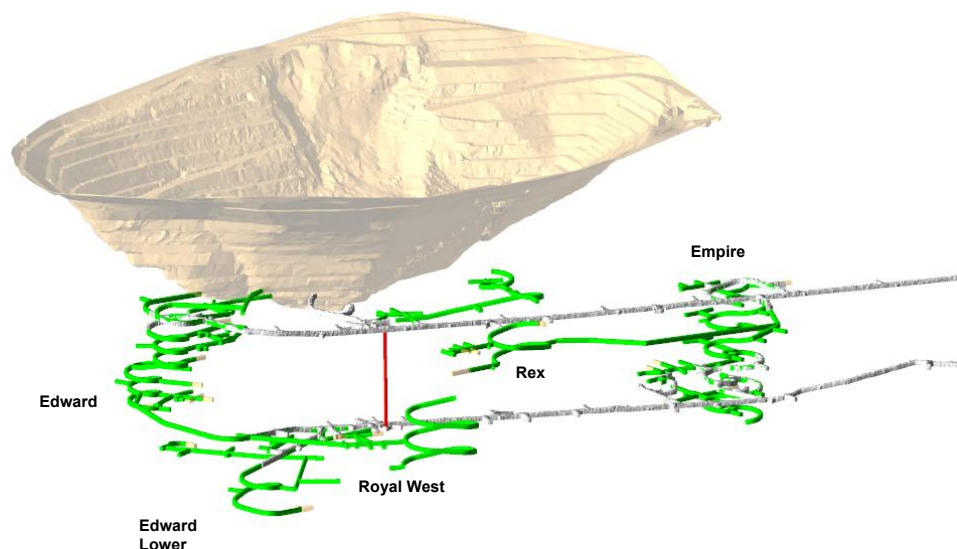
Tim said: Did Donna give a bit of background about what it was that you were feeling at that point?

Jane said: She said it was through what was happening there. The environmental fellow said that they were within their means and there was no need to put a monitor on our property.

Tim said: When Russell speaks next, he's going to talk some more about the vibrations and the readings and I want you to raise that again then because he'll be able to give you some direct answers at that time, okay?

Jane said: Yes.

## Project Martha at the end of 2020



INNOVATION PERFORMANCE GROWTH

OCEANA GOLD

Jol said (regarding slide 5): We were looking from the top, this is now looking sideways from the south. We talked about Edward – the one you just looked at Jane, you can see Royal West, Rex is towards us, that's the Royal West and then Empire. You can see they are just about joined up and it's changed colours but it's the same development, this is actually a bit more of a plan but it gives you an idea. This red line is a

ventilation shaft we put in about 12 months ago to get the air up here and then we ventilate out into the pit. Similarly, this one, at the moment we exhaust air out, all the air comes in from our existing line through these, we'll change that to draw air in a bit later on as well. What we have done during the quarter is we've got an underground crib-room facility which is sitting just over here. The miners actually stay underground now at crib-time and have their lunch rather than come all the way to the surface and certainly if we fire stopes, which we do in the middle of the day, they will retreat to that safe position in the crib-room, we fire stopes and then come back. We haven't started firing stopes here, I'll clarify that, we're actually still firing some little stopes in the existing mines but that's the intention. Are there any questions?

Ann Stevens said: If you put that on flat land, where would it be?

Jol said: If you go back up to the previous slide, just think of it sideways, that's Edward and then Empire and the pit and this is to the south, if you like, of the pit.

Ann said: So, the school would be there? That's right, that's okay.

Jol said: Yes, maybe we need to flip that 90 degrees, but we're looking that way.

Ann said: Oh yeah, I see. Out by the rugby club there looking sideways.

Leigh Robcke said: How far away are you from production?

Jol said: Probably quarter 2 next year is realistic to start stoping in those areas. We've shown all the new mining but what we haven't shown on here is all the historic workings and there's a lot of them of course. We're actually like threading the eye of the needle with some of these drives to get them through so before we develop these drives anywhere near the old workings we've drilled probe holes. We want to keep it safe for our miners and ourselves so we drill probe holes to make sure we don't get too close and they fall in. So, we've been doing that. We actually purposely broke through to a couple of old stopes and bogged out all the dirt that was in there and it went to grade so we put it through the mill and got a little bit of gold out of it. The old-time workings had much higher cut-off grades so they threw away stuff we can get economic gold out of now. So, we have got a little bit of gold out already, but in terms of firing stopes we won't do that until quarter 2 or late quarter 1 (March/April 2021).

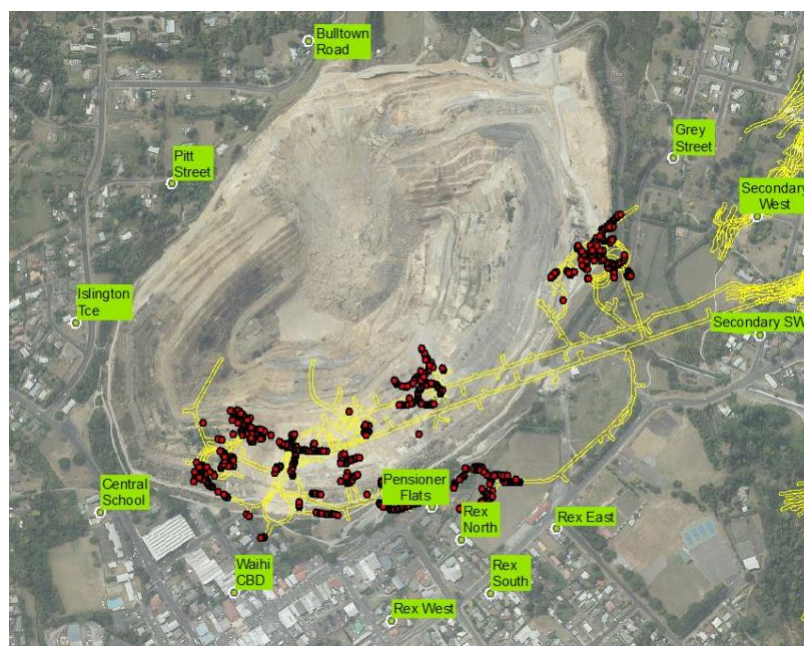
## Vibration

### Vibration

#### Project Martha

##### Six-months to date performance

- Development blasting (330 events)
  - Highest average 0.78 mm/s (consent limit 2 mm/s)
  - 95 percentile 1.43 mm/s (consent limit 5 mm/s)
  - Monitors have been triggered 93 times to date in relation to Martha blasts (max vibration: 2.1mm/s)
- Safety/Maintenance blasting (9 events)
  - No monitors triggered to date (consent limit 1 mm/s)
- No Production blasting to date



INNOVATION PERFORMANCE GROWTH

OCEANA GOLD

Russell said: On this picture we are overlaying the development blasting. You can see how the drives that have gone into the pit are completed now and we're back into these areas. As Jol said we're working up and down through the areas to join up the different workings and working towards the development headings. The dots are all the vibration monitors. In the last 6 months we've had 330 blast events. We try and get every



morning and every evening blast that we're allowed to. During that the highest average is 0.78 mm/s, that is from the Waihi CBD strangely enough but that has to do with the blasting out here. For those of you who are feeling the blasts, and we are starting to feel them, I looked at the previous 6 months' data and the monitors had only been triggered 33 times and now they've been triggered 93 times, so this has to do with an increased number of blasts as well as we are getting shallower and we're getting more at the extremities. When you (Jane) were talking about feeling the blasts, Donna actually came to see me and the initial indication we got, and I think this was probably a case of Chinese whispers, was that it was a drilling noise.

Jane said: Yeah originally.

Russell said: So I investigated and asked, "How could that be?" and then when a little bit more detail came that it was the time you said which was at 7.10am in the morning ...

Jane said: And at night.

Russell said: And then I went, "I know exactly what that is" and you were hearing them which was the other thing that's the key.

Jane said: Yeah and the odd time we've felt them too.

Russell said: The highest blast we've recorded so far is a 2.14mm/s from Waihi CBD which is just behind Waihi Bakery. There's another one on the other side of you down by the primary school so partly that's why I'm saying there's probably not much point putting a monitor directly on your place because we've actually got a monitor either side. We're not getting an awful lot from this one, we are getting a few results from that but they're still relatively low, they're still a maximum of just over 2mm/s. Largely the reason you're feeling them is what's called re-generated vibration and noise where a lot of it is actually your building. The vibration that is generated from the blast comes into your building and it's actually your building vibrating that's making the noise, it's not actually the blast itself. But it's real, so that's the key thing to remember, we acknowledge that you will be hearing it.

Jane said: Well you can't miss it, it's pretty loud. At first I thought it was a boy racer car but now it's deeper and more of a rumble and it's actually gotten louder.

Russell said: That is a little bit to do with proximity and also the number of headings. Often we're blasting two or three headings at a time so there might be one over here and one down here and one down there. Because we only have three blast windows a day we try and get as many headings as we can. I suspect, that the morning blasts are probably the biggest on average and that's because that's when we can do the most blasts. Monday morning is probably a classic one because we've been preparing all Sunday, so we probably can get up to maybe ... I think the best I've ever seen is 15 headings go off in one event and that goes right across the mine. So, even though there are probably only three or four near to you, we have to try and get them in because that's the consent rules, we have to fit them in a specific timeframe.

Jane said: Isn't it part of the rules to actually notify people?

Russell said: Yes, for production blasting? We're not required to do it for development blasting but we are required to put notification out for production blasting.

Tim said: So, define those two. What's development, Russell?

Russell said: Development blasting is the access tunnels that we're blasting and these are 5m x 5m tunnels driven 3m to 4m in advance every time. So, that's a simple sum of  $5\text{m} \times 5\text{m} \times 4\text{m} = 100\text{m}^3$  of rock. Under the consent those blasts are considered relatively minor in the scheme of things and they tend to happen in the morning and the evening and they happen routinely. It's the production blasts that will have a larger charge-weight and they can be several hundred tonnes, up to thousands, but they are managed in a different way. Remember we are still controlled by the limits of our vibration. So, it's up to us to figure out how to do it.

Tim said: Production is when you actually start to loosen up the ore so that you can take it out and extract it?

Russell said: Yes, so once we've done our tunnels, think of it like a series of tunnels with one above the other, the stopes are actually extracting the ore from in between those tunnels. The tunnels themselves are 5m high but they are between 5m and 20m apart vertically so a lot more rock comes out in stope blasts than in development blasts.

Tim said: So then, in terms of what Jane's experiencing, will that get noisier for her when production starts?

Russell said: It will be different. What you're feeling more at the moment I often liken to someone beating a drum, you can actually feel the different charges going off.

Jane said: Yeah it's quite loud, a real rumble, boom, boom, boom.

Russell said: Yes, when a production blast happens it will be more of a rumble, probably like an earthquake, but quite short and sharp.

Jol said: They are bigger but don't go as long.

Russell said: The difficulty with development blasts is how we have to free the rock without damaging the tunnels, so we have to do it in a very sequential space, time to relax the rock and let it come out so that we don't de-stabilise the tunnel.

Tim said: Jane, the house that you're in, is it concrete, brick, wood?

Jane said: It's an old miner's cottage on concrete piles.

Tim said: And it's wooden? Does that make a difference to what Jane experiences?

Russell said: It's very hard to anticipate how different houses will behave. A house with a full concrete block foundation probably has the least effect because it's the largest mass the ground has to mobilise. A smaller house on piles is probably more affected but a wooden house is probably the most structurally settled house.

Tim said: Jane, are you worried or are you just hearing it?

Jane said: I'm hearing it but I'm worried about what's going to happen when they want to expand because Waihi is an underground of honeycombs and what's the chance of a greater slip? How are we going to be affected with all the dust and everything? Why has the school been spoken to and we weren't told anything?

Tim said: Let's get Russell and Jol to answer those questions.

Jol said: So, Jane you talked about the drives, and we're getting towards the top of Edward at the moment. That's about as high as we get so for a while you probably won't notice a change, it won't get louder. When we come to stope it will be a change for you next year. In terms of, "Is it going to fall in?" our mining method is that we will mine the drives and then mine the stopes in between them and then we immediately fill those.

Jane said: Yeah but it still wouldn't be as solid as what it originally was. But I mean with the old tunnels and that, that are all around.

Jol said: What we're doing, because we need to go near them and we can't have them falling on us, we break through and then in-fill. We have been talking to council about "cemented rock" and what we do there is, any of these voids that are going to impact us, we break through to those and we fill them first before we mine them. We have to do that because we can't get the ore out, you're just going to fall in the hole, if that makes sense to you? So, we're going to fill those voids with rock with cement in it so that we can be sure that they are solid again. Just to give you a feel, you see the truck out here and the underground loaders? When we fill a void those machines then drive over them so they're quite compacted. They are also relatively deep so if there is any settlement then there is no way it would expose through to the surface. It has previously, in the old workings, and we do a lot of monitoring of that. We fill these probe holes I mentioned, we put a scanning machine in and measure the voids to understand it better around the area where we are going to work.

Jane said: So, like on the (north) side of the pit that had that massive slip, there's no way that's going to happen around this end?

Jol said: That's quite different to the open pit. That's quite different to what I was talking about in the underground. There's probably two things for you to think about. One is our impact underground and the potential risk it has to you, which we manage very closely. We could probably elaborate on that a bit more for you later. The other one is – are you worried that a slip could happen in this wall?

Jane said: Yeah.

Jol said: That's where all of our monitoring assists. We have a real-time monitoring array where we are constantly monitoring so if we see any significant movement we get alerted to it. We've also had a lot of work done and I'm probably not the best person, maybe we get a geotech engineer here. We've got a couple of geotech engineers employed and they have mapped it and have a better understanding of all of that behaviour (of the wall).

Tim said: Can I ask you a dummy's question about that Jol? I get it that there's some kind of monitoring. Is it a laser thing I've heard people talk about before to monitor the movement? What good is it to Jane if that just tells you that it is slipping?

Jol said: Yes, there's a couple of lasers there. Those sorts of slips give you advance notification. It's quite common and it's a whole science. It will give you an indication before it's going to go depending on the rock and how long it is. For this example, they knew the North Wall was going to slip long before it happened. They can tell by cracks and movement and so forth and everything moves over time, the whole island is moving with earthquakes and stuff.

Jane said: Yeah but when you're digging around it just encourages it even more doesn't it?

Jol said: A lot of work goes into that.

Tim said: So, you're watching it and you would know in advance if there was a slip?

Jol said: Yes.

Tim said: In terms of the old stoping, if you come across them then you're filling them and you're applying to council for permission to put concrete in those?

Jol said: I'll break that down a little bit. We will fill regardless, I'm just giving you some insight into ... we're actually engineering the fill. It's not just throwing the dirt in, we actually put rock in that's cemented so it becomes solid and we need to do that if we're going to mine around it and have confidence it's not going to self-mine on us.

Donna said: And in the long term that makes the old workings safer anyway.

Tim said: Okay, so it's a longer term positive.

Jol said: Yes, correct. It's interesting, it obviously costs us money to bring waste all the way to the surface and if there's a void there to fill we would rather put the rock in the hole and then we don't have to cart it to the surface and impact on the surface. So, it's an advantage for us to fill as much of the old workings as we can.

Russell said: We have got a little bit of experience with cement fill as well. When Oceana Gold took over, the first thing we did was cement fill the bottom layer of Correnso and that was because the ore body was unclear at depth. Since then we've actually mined three or four levels below that and at one stage I went down there and you can actually see the concrete above you.

Tim said: And it was still holding and secure?

Russell said: Yes and it's backfilled behind as well.

Tim said: So, that's the old mining stuff and in relation to the new mining you're putting fill back in and (answering Jane's question about it not being as tight) it's packed to the extent that you can drive machines over the top of it?

Jol said: Correct. We measure the void, we scan it and see how much rock came out of it and then we fill it and make sure that the rock put in matches what we took out of it. It would be good to be able to draw you a picture on a whiteboard. We mine from the bottom up, there are two tunnels, and we stope between. We then come in over the top, fill it with rock and work our way up, progressively filling as we go.

*Post-meeting comment: Pictorial representation of back-filling stopes and drives to be presented at the next meeting.*

Jane said: With that monitor that you say you've got that detects (subsidence in the pit), how much warning have you actually got? Is it telling you how much land's going to subside?

Jol said: They have multiple scanners and measuring any movement anywhere, if it gets to a certain level, and I don't know the numbers that are normal for it but let's say it might move 1mm over 6 months, but if it moves 5mm in a day then it will send an alarm to us and we would check it, eyeball it, measure it and get surveyors out there because they'll understand it well before you would see a slip.

Tim said: With the slip on the North Wall, do you know how many days/weeks/hours it was (after movement was noticed) before it slipped or is that an answer that we bring back to the meeting?

Jol said: That's one we can bring back to the next meeting.

*Post-meeting comment: Details of timing of the North Wall slip to be provided at the next meeting.*

Russell said: We knew well before that it was going to let go and I think we were less than a day out.

Donna said: Yes, we were. I think it was hours.

Tim said: Right, so you knew more than a day before but your prediction of when it was going to go was predicted to the accuracy of within a day of it happening?

Donna said: Yes.

Tim said: That's something we can bring back to the next meeting about the knowledge and who would know.

Jol said: Typically you would know weeks in advance of something like that happening.

Jane said: Well, there's houses up above me too. What do you do? Do you go and warn them or just wait and see how much dirt's going to go?

Tim said: Oceana are saying there would be lots of time, like weeks. But we'll get that specific answer.

Jeannine Wiki said: On Jane's questions about notification for blasting. When we do stope blasting we have different methods of notifying residents – when we're going to stope blast and where and what position in the underground it's going to be. We can text or email you and we put it on our website every day whether we're stope blasting or not – production blasting we call it. When we start stope blasting next year sometime, if you'd like us to notify you we definitely will.

Jane said: Yeah well it would have been nice for somebody to notify us in the beginning because we were hearing these noises and feeling things and when I rang and asked ...

Jeannine said: I know, we weren't told either.

Jane said: You know, it was like, "Oh it's not us" and I was like, "I'll ring the council and ask them then".

Jeannine said: When it comes around to stoping would you like us to get in touch?

Jane said: Well, it would be nice.

Tim said: So, Jane can expect a continuation of these rumblings for now while the development is going on and then when production starts there'll be a notification process before then.

Jeannine said: We offer that to most residents if they want it.

Tim said: Cool, the other thing that Kim said quietly before, which I think we should capture, is that it might be useful next time to have a slide about the mining technique.

Kim said: It's easy for us to stand there and waive our arms around but some pictures on the PowerPoint slide would help.

Tim said: Good plan, so we'll note that as a "to do" as well.



Russell said: I think there is even a video somewhere ...

*Post-meeting comment: Pictorial representation of mining technique to be presented at next meeting.*

Tim said: Russell, the other question I had was when you talk about one of those higher-level vibrations you were experiencing being a 2.1 or something, and the consent limit is 2mm/s, how does that work?

Russell said: The average is 2mm/s. We can be some above that as long as the average is below.

Tim said: Other questions about the vibration?

Russell said: There is an off-chance you may have felt one blast outside of an hour as well. We are permitted to do safety maintenance blasts, we've done nine of those in last 6 months. They have to be below 1mm/s so I doubt you'd be hearing or feeling them, but they may happen at any time of the day hence the very low limit. As mentioned we've done no production blasting for that.

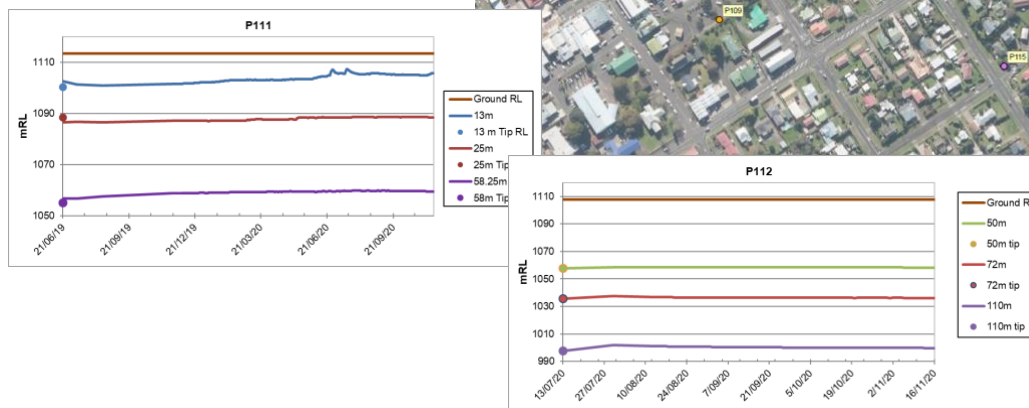
## Dewatering

### Dewatering

Newly established piezometers, currently collecting baseline data.

All now installed:

- P111 & P112 with multi-level dataloggers
- Deep levels stabilising and shallow aquifers responding to rain events.



INNOVATION PERFORMANCE GROWTH

OCEANA GOLD

Russell said: The other thing is dewatering. One of the other concerns that people have is if we pull too much water out of the upper layers of the rock that there could be some subsidence. You may be aware we made a mistake over Correnso in 2013 and we've learnt a lot from that in the time since then.

Tim said: And nothing since then, no issues?

Russell said: No and in fact once we resolved the unfortunate drainage the houses actually raised back up again from rehydration of the soil.

Donna said: But we did purchase them under the "we break, we pay" policy.

Russell said: The dots (the yellow squares with numbers in them) that you can see on the map here (PowerPoint slide above) are all of the installed piezometers. Most of those are simply sealed pipes in the ground that we drop a little tape measure down and when it goes beep and hits the water level we measure it. A couple of them are what are called multi-level data loggers so they have sensors at various levels down the hole and they are designed to measure the water level in the different aquifers that we have. So, you've got to realise that we have the alluvial aquifer at the surface which is the natural one that when it rains it gets closer to the surface and sometimes above the surface hence ponding. Then we've got a lower one in the young volcanics which is a rock layer below the alluvials, and then the mine is in the andesitic rock below that. We drill these bores right down through the whole lot, we seal them up but we leave these transducers at various places down through the rock site. They've only been in a few months and you can sort of see

how they've adjusted over the first few months and now the lower two in particular are quite stable. The purple line at the bottom is an indication of where we're at with the mine, we haven't really got close to it yet. The upper levels, the blue one and the yellow one, are in the shallower areas and they are affected by rainfall. The thing we want to see is these being affected by rain events as you can see here.

Tim said: That's the positive up-spikes.

Russell said: Yes, so when it rains the water level comes up in these soils but it doesn't affect these lower levels down below and that means that we've got separation between these two levels here. We may affect these lower levels later on when we mine near them which is a natural consequence of mining in that vicinity but there is a sufficient clay seal between those lower levels and the upper level that doesn't actually cause any shallow level subsidence.

Tim said: Just to make sure I'm not being dumber than usual, if there was an effect on the water levels in those top levels then the natural ground level would move?

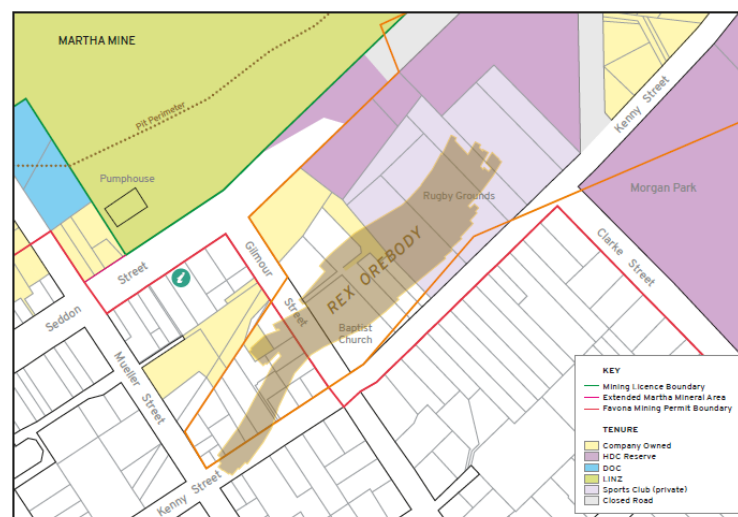
Russell said: Yes. If you get clay and mix it with water it swells and then when you take the water back out again it cracks, so that's when it shrinks back again. The same thing can happen with these upper alluvial soils if you take the water out and it starts to shrink.

Tim said: Is that why you're being super careful about not affecting those upper layers?

Russell said: Yes, what we want to see is these upper levels responding to rainfall. If they respond to rainfall and they stay high that's good for us.

## Project Rex

### Project Rex



8

INNOVATION PERFORMANCE GROWTH

OCEANA GOLD

Jol said: On the previous slide I pointed out the decline coming in from here, Clarke Street, and then we ramp up and down so we'll spiral decline basically out this end, and then we are accessing the Rex ore body. This is potentially what we design up – all the stopes that we are going to develop. We put drives out on these and the stopes but because we're quite shallow here you can see these little bumps. What that means is we're not going to drive two tunnels and fill 10m or 15m between like we talked about. We will actually do what you call flat-backing so rather than that we just take out one lift at a time, 4m or 5m, because we are closer to the surface and don't want to shake it up too much. That's the mining method we've chosen that has the minimum impact on the surface. We'll mine one tunnel and then fill it and mine above it with another tunnel and mine it and fill it as well.

Tim said: Jol, you're saying we're quite close to the surface. How many metres down?

Donna said: About 130m to 150m is the closest we come to the surface.

Jol said: Yes, about 140m at the moment.

Tim said: So that's about the length of 1-½ rugby fields down into the ground and there's that andesite layer that Russell was talking about between the mine and the surface?

Russell said: We mine in the andesite layer but there's a volcanic layer next and then there's clay layers between each of those.

Jol said: We basically come up to the bottom of the andesite. To give you an idea of those tunnels, if they were to fail then it would go up 15m before it shakes itself off and runs out (it would not make it to the surface). That's what we've got in total plan for Rex at the moment, drilling, developing the mine design – that changes as we do more drilling, so over the next couple of years you'll see that picture change a bit.

Tim said: It's quite a specific area (Rex ore body shown on the PowerPoint slide). How are you able to achieve the outline that you've got there?

Jol said: If we were to turn on all the drill holes you'd see a lot of diamond drill holes coming this way into the Rex ore body – there might be 50 or 60 holes in that. That gives us that design (on the PowerPoint) but we need to work out which bits to focus on. As we drill further you'll find that there will probably be big spots that we don't take because there is nothing there.

Ann said: Is that under the football field?

Donna said: Yes, this is the rugby club and that is the Baptist Church there.

Ann said: Under the pensioner houses then.

Donna said: And under the pensioner flats that are going to be relocated in the future.

Jol said: There's a design requirement that this area stays within that boundary, the mining consent boundary. It cannot go south of that.

Liz Cannell said: I don't know whether I missed a bit at the beginning, sorry I was late. When we were approached originally about the new Rex going ahead we were told ... I'm trying to think of the depth that you were going to go, but the latest information that we got is it's a lot shallower. Is that right?

Jol said: I knew the 140m but I just want to check with the design engineers. I don't believe that that's changed but I think we should check that for sure.

*Post-meeting comment: Answer regarding depth to be confirmed at next meeting.*

Tim said: What did you think it said it was Liz?

Liz said: I'm trying to think of the depth, was it 200m or 300m?

Donna said: It was from about 300m up to 140m. I don't think that has changed that much. We will come back to you and confirm that.

Tim said: We may be able to add these answers to the minutes so we don't have to wait for the next meeting.

Richard Jordan said: It's also a lot longer timeframe isn't it? It was originally 2 to 3 years, it's now 5 to 7.

Jol said: So, Richard that does change depending on overall mine plans. Think of this as only one part of the Martha project which was those other declines like Edward and that changes in each iteration of the design we do. As we do more drilling, as I said we will do more drilling here, some things might come in and go out. The other areas are the same, we're actually drilling to the old stopes. We had a model for so much gold but it may end up that there's more there, or there's less there.

Richard said: So, you don't know until you get in there?

Jol said: That's right, although we'll just check on that number for you as well. I'll ask the planning guys for the latest version. We're just doing another run at the moment. My understanding is that Rex hasn't changed a whole lot but the overall system has and we're finding we're actually mining to the extents and as we do this drilling there's swings and roundabouts, wins and losses. We will talk about each one of those at the next meeting. But, certainly at the moment, our schedule does look pretty solid for 7 to 10 years.

*Post-meeting comment: Timeframe for Martha to be confirmed at the next meeting.*

Russell said: Just to add there as well, when we talk about the development work we're doing we've also still got exploration rigs underground. Are there four still there?

Jol said: Four at the moment.

Russell said: This is why we're getting more and more definition of what's down there all the time. It's part of the reason for the original two tunnels under the South Wall. That was to get down there so we could put drilling rigs underground because when we go underground we can drill 24 hours a day because people don't hear us.

Jol said: The timeframe might be longer (than the 7 to 10 years), but why we'll go longer is because we may be going deeper. Our boundaries are set so we can't go longer or wider without changing the consents. So, mine life extension for this mine is then probably just going deeper and as it gets deeper you will feel it less.

Liz said: Could I just clarify please Jol? With Rex we were told it was going to be about 3 years – 1 year to get down there, 1 year to extract it and 1 year to backfill. Now we've been told it's about 7 years. Is it just that brown bit there that's going to be 7 years?

Jol said: Can you remember where you heard the change from Liz?

Richard said: At the launch of it, it was documented.

Jol said: Specifically for Rex?

Richard said: Yes.

Jol said: Let me find out the latest version of that. Very initially, before we released stuff, we were going to get in and do it very quickly because it's fairly good grade and that helps. Then we said, "Well, guess what? We actually have to mine it a different way to do it better". That takes longer so that's most likely what that change is. It does move around with our schedules.

Leigh Robcke said: I thought I recalled that the Rex vein was going to be 3 to 5 years or something like that, but the whole project, all the other aspects, was 10 years.

Jol said: That's what I know Leigh, I just don't want to give you misinformation. I'll find what the latest is and give you the update. But, I'm trying to explain to you about the changes and why they're not definite so you understand it's not that we're trying to change the story. We still "learn as we go" to build it, we put in our best estimates with timing and so forth. If the gold price went to half we might not do it at all because all of a sudden it won't make any money.

Jane said: It has dropped hasn't it?

Jol said: No, the gold price is quite high, it's quite healthy at the moment. So, it's a good time to buy Oceana shares.

Lee Anderson said: Could I ask a curveball question? Just changing it slightly, how are you going to shift the pumphouse from there down the hill?

Donna said: I'll come to that shortly and will talk to that in the slides. That's part of Project Quattro not Project Martha.

## Project Rex – What You Need to Know

- 14 properties are situated above the Rex mine workings.
- All 14 property owners have now been contacted and offers of purchase or ex-gratia will be formally made prior to Christmas.
- The offers will be carried out by The Property Group, an independent property consultancy as per the Project Martha Consent Condition 84.
- Now that we have a mine plan we will commence development blasting in March 2021.
- Production blasting will commence in July 2021.

Donna said: Still on Project Rex, 14 properties have now been identified to be over the Rex workings and all those property owners have now been visited by myself and a gentleman called Graeme Bates who is from Independent Property Group. As part of the consents, Oceana has to use an independent property person and that is Graeme Bates. Offers will be made to purchase those properties prior to Xmas and some of those people are here today. They can either take up a purchase offer or be paid an ex gratia payment which is 5% of the total value of the property and they can stay there, they don't have to do anything – not take the money, just stay there and live on. Those are the options available to people. They will be carried out by Independent Property Group not Oceana Gold. Now that we've got the mine plan I've spoken to the underground mining engineer, Dave Townsend, and he's informed me that they will want to start development blasting in March 2021 and they'll probably commence production blasting, that's the stope blasting, probably in about July next year. So, a little way off yet.

Jol said: Just to clarify that Donna, we're developing now. The development that you're talking about in March is in the ore bodies themselves.

Donna said: Yes, that's right, under those properties. We have to make those offers under the consent 3 months prior to blasting under those properties so that's why we're making the offers now. Once we make those offers, under the consent that's what we have to do, then we'll commence the development blasting in March.

Richard said: Is the mining company confident that all those properties within that area will be habitable during your workings?

Donna said: Yes, while we're mining under them you mean?

Richard said: Yes.

Donna said: Under the consent conditions we have a limit that we can blast to and that limit is set at a level that would not create any structural damage to a property. If it did we have a "we break, we pay" policy and that covers any damage, if it's down to us.

Richard said: Right, that's good. Same as Correnso.

Donna said: Exactly the same.

Tim said: No risk to life and limb. Just to be clear on what you were saying before Donna, with the ex gratia payment people can either receive the payment and stay, receive the payment and sell the property themselves, or there's an Oceana offer to buy the property that will be negotiated through Independent Property Group.

Donna said: Yes, if you took the ex gratia payment and then during the life of the mining project decided to stay and own your property, what you can do during the period that we are actually mining under there is come back to the company and say, "I've changed my mind, I want you now to purchase me". The company will do that but they will take the 5% ex gratia payment off the total price paid.

Richard said: And re-evaluate the property?

Donna said: Yes, it will be revalued.

Tim said: So, you could choose to hang in there for a while, see how it works and if you then decide to sell to Oceana you would not be "cutting off your nose".

Donna said: Yes, a lot of people in Correnso did that and ended up staying and are still there.

Jane said: With the revaluing of the properties, what happens if they decrease because you're mining under them?

Donna said: The valuations are done as though the mine doesn't exist, so they are generally above market valuation. You get to choose a valuer, we choose a valuer and then if those valuations are within 5% of each other, which generally they are and should be, we always go for the higher valuation.

Tim said: So, they pretend the mining's not happening and value it on that basis?

Donna said: Yes.

Richard said: I would point out that those valuations are registered valuations from professional valuers, they're not necessarily up to date with market values.

Donna said: I would agree to disagree with that.

Richard said: Well we know the market's moving far more rapidly in New Zealand than property ever has in the last decade, well certainly probably 20 years. Valuers look back in time, real estate looks forward and every sale that transpires is ahead of any valuation.

Donna said: I believe you are talking to Graeme Bates about that aren't you?

Richard said: Well, we have to. It's about fairness and procedure and I think the company's showing compassion where needed.

Donna said: Yes, they certainly are.

Richard said: I just wanted to point it out.

Donna said: That's fair enough.

Liz said: How are we placed with insuring our houses?

Donna said: There should not be any issue with insuring the house. If there is we'd like to know about it and we can certainly go into bat with you if the insurance company was not insuring your home.

Liz said: Do we have to let them know?

Donna said: No, I shouldn't imagine. We can find that out for you Liz.

*Post-meeting comment: Confirmation of insurance company status to be clarified at next meeting.*

Russell said: It's similar with mortgage renewals isn't it?

Donna said: Yes, I'll have to find that out though, I'll talk to Graeme.

Jane said: I think that the gold company should also take into consideration that for people who have been in their houses for a long time, it's hard to find somewhere else because the market is so high. They're under a lot of stress having to move.



Donna said: In some cases another option for people is that they can sell to the company and stay in their home and rent it back.

Jane said: It creates a lot of pressure and stress to pack up and move, and where are you going to move to? Where can you afford to move to?

Tim said: So, the ex gratia payment Donna, you're saying that's what percentage?

Donna said: 5% of the value of the property.

Tim said: Right, so if it was a \$500,000 property then it's a \$25,000 payment. And what's that for?

Donna said: Yes, it's basically a payment to recognise that we are mining under your property. It's a one-off cash payment to the property owner, and it's only offered once. It's just basically, "Here's some money because of the inconvenience of it".

Tim said: I'm wondering if that partly links back to Jane's question about it being a stressful thing having to leave your home of many years?

Donna said: Yes.

Kim said: It is about trying to offer as many options as possible, acknowledging it is a stressful time, it's a disruption to your life, to allow people to think about where they might like to go and as Donna said some people have chosen to stay. Donna and Jeannine work closely with people as they think through that process. Do we have figures or a percentage?

Donna said: No, we don't but we could find out.

*Post-meeting comment: Confirmation of quantum of ex gratia payment to be confirmed.*

Richard said: Is there a formula for renting back from Oceana Gold? Is it market value?

Donna said: Generally they are market value now but our AEP is paid to residents whether they're the owner or the tenant. Whoever is living in the property.

Richard said: Fair enough.

Tim said: So, teasing that down too, I'm conscious that we've had a series of these types of meetings with different neighbours, different communities. So, explain that a little bit more Donna.

Donna said: Jeannine actually manages the AEP. Can I hand that over to you Jeannine?

Tim said: So, if you're renting the property you still qualify for the AEP?

Jeannine said: If you're renting a property it's the person in the property that receives the AEP. The AEP will only kick in if we have two or more blasts in one month equal to or greater than 1.5mm/s. It's a 6-monthly payment from January to the end of June, and then July to the end of December. At the end of those periods it's calculated by Russell from the vibration monitors. That tells us which properties qualify. So, if it's the tenant who is in the property, the tenant will receive the AEP not the landlord. It's the person residing in the property.

Tim said: What does that range from and to?

Russell said: If it qualifies the minimum is \$250. Even if you had two qualifying blasts in one 6-month period and in a 1-month gap and none others for 5 months you get \$250. The highest I can recall is about \$3,500.

Tim said: For a 6-month period?

Donna said: Yes.

Tim said: And the eligibility for AEP lasts for as long as you're mining in that area?

Russell said: Yes. It's also related to all of the different mining activities that we do. For example, at one stage in the early days of the AEP we were blasting in the pit at the same time as we were mining Trio and I recall a couple of residents that happened to have one blast from the pit and one blast from Trio that happened in the month. That was the only way they qualified and they got a minimum payment of \$250, from different projects.

## Project Quattro

### Project Quattro



INNOVATION PERFORMANCE GROWTH

OCEANA GOLD

Donna said: If you're wanting to know any more information about Project Quattro, which is our new proposed project for Waihi, come down to our office at 86 Seddon Street. There is Westpac Bank, Banana Pepper, an alleyway and then our shop is right next to Adore Beauty Salon. We've got some great posters there. The shop hours are 10am to 2pm (shut from 12.30pm to 1pm to give Jeannine a break). We've got a great video on Project Quattro which is also available on our website. We've got some really great posters up there, huge posters where you can see things like the pumphouse move and how they're going to do that, which was your question Lee, and all different areas of the project. We're encouraging people to come down and have a look, take as long as you want and Jeannine is there to answer any questions. If she doesn't know the answer she'll get back to you with the answer.

### Project Quattro

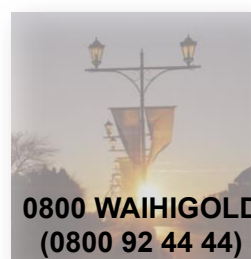
For more information about Project Quattro



Visit our Project Information Office at 86 Seddon St



Log on to our website  
[www.waihigold.co.nz](http://www.waihigold.co.nz)



Call us on our free call Community Engagement Line

11

INNOVATION PERFORMANCE GROWTH

OCEANA GOLD

Tim said: Great, so this is the link [www.waihigold.co.nz](http://www.waihigold.co.nz) and you can click on that to see the video of the Project Quattro overview.

Donna said: There's a video and it's a flyover, it's a really good video, excellent, well put together. Or if you don't want to do that, or you can't, you can call us on our community engagement line 0800 924 444 and someone will always answer that phone.

## General questions

Jane said: So, what about the people that are working? Why aren't these meetings in the evening for those people that are working?

Donna said: We have tried that in the past and it didn't really make any difference, there weren't a lot of people coming to those evening meetings but that was for another project. That's something we can look at.

Tim said: We can consider that.

Donna said: You can always just give us a ring and we can organise a time to come and see you.

Jane said: But it's also nice to have other people putting their input in as well and it gives other people the opportunity. I didn't even know these existed until I started saying, "Hey, what's going on?" and then I started to get the letters in the mailbox.

Tim said: So, Jane you're working during the day?

Jane said: Yes, I've had to take time off to come and see what's going on.

Tim said: And, not promising that we can do this, but how late in the day would it have to be to help you?

Jane said: Well, most people finish work 4.30pm or 5pm don't they?

Tim said: So, a 5.30pm meeting?

Jane said: Yes, for people that want to, it gives working people an opportunity without taking time off work.

Donna said: Yes, that's a fair comment.

Tim said: We have the conversation quite often, in this and other situations, and it ends up being, "I want to be finished work", and somebody else, "My kids are home and I need to feed them dinner at 5.30pm", so there is a mix and match that happens but I'm hearing you and we should look at that for the next meeting pattern.

*Post-meeting comment: The next Martha meeting will be on 11 March 2021 at 5.30pm.*

Donna said: Yes, we will.

Kim said: Jane, your point about being able to meet with other people, we take your feedback on-board and particularly with Project Quattro as we move forward we'll look at other ways to meet the needs of lots of different people.

Tim said: Also, as you said Russell, at our next meeting which may be 11 March 2021, we've got a Martha meeting and a Correnso meeting. So, we could flip those over so that Martha is at 5.30pm or something and Correnso at 3pm.

Donna said: Yes, we can work something out I'm sure.

## Christmas Hours

OceanaGold's main office will be closing on Wednesday 23<sup>rd</sup> December and reopening on Friday 11<sup>th</sup> January.

The Project Quattro Office (86 Seddon Street) will remain open apart from the Statutory Holidays.

Or if you prefer you can always contact us over the Christmas break by calling the Community Engagement Line – 0800 924 444.

The mine will continue to operate over this period, however no production blasting will be carried out on any public holidays.

We would like to take this opportunity to wish you all very happy and safe festive season and we look forward to seeing you all again in 2021



Donna said: Just a little slide on Merry Christmas and our hours. Our main office will be closing on 23 December, that's just that old Pye Building up the road there, and won't re-open until Friday 11 January, but people are still working inside. Our Project Quattro office will remain open from 10am to 2pm Monday to Friday, except obviously for the statutory holidays to give Jeannine some time off. Like I said before, you can always call us on the 0800 number because that will be available on those public holidays as well. The mine will continue to operate underground over that period, we just won't be production or stope blasting on public holidays because we're not allowed to under our consents. As I've said before we'd just like to take this opportunity to wish you all a very safe and happy holiday season and we look forward to seeing you next year and we'll definitely look at those meeting times Jane.

### Other discussion

Tim said: With Quattro, what's the next step? Are you still just working on stuff through until ...?

Donna said: Yes, we're still working on our technical reports and we've taken all the feedback we've got from the open days we had at the hall, and from talking to different stakeholders, and we've taken that information back to those experts, those consultants, who are writing these reports and we're trying to factor in those very things that people have raised. Those technical reports will be due out in the New Year so once we have those we will be able to share that information more widely with different stakeholders and we will probably lodge sometime next year, we're not sure yet.

Tim said: That's an application for a consent sometime next year, but there's steps before then. So, there's the technical reports and I was just thinking, linking to what you were saying about the shop being open, that people who want to know and who are working during the day, can they do that over the holiday period too? Can they just wander down?

Donna said: They could, most definitely. Those technical reports will be available at the project office and online if you're that interested in technical reports. But I'm sure we'll have a summary of those reports done for people that we can understand, including myself.

Ann said: You've talked about Savage Road, straightening it. When are you going to do it, roughly?

Donna said: Project Quattro is still a proposal, it's not a done deal. It has to go through a full RMA process and a full council hearing to be able to obtain a licence to do that. So, that's quite a way off yet. Sometime next year we may apply for that, I'm not sure when yet. This is why it's important for you people that live in those areas to go down to the project office and have a look at the big-size posters, they're huge, so you can say, "There's my house, that's the road realignment, how's that going to affect me?" and Jeannine will talk you through what's going to happen, if it takes place. It's all very conceptual at this stage, it can all change. It's important that if you are interested you come down to the shop and have a look.

Ann said: Okay.

Tim said: I wanted to say too that there will be more information and then there will be a consenting process, right? That means that Ann and neighbours etc will be able to have a say and the council will take all of that into consideration when the consenting decision is made, if it's applied for.

Donna said: That's right. There'll be a submission period where members of the public can put in a submission for or against.

Tim said: You will get heard.

Donna said: Yes, and you can actually speak to your submission at the hearing yourself if you wish.

Ann said: Okay.

Donna said: You're given that opportunity as well.

Tim said: Great question Ann, because that's why you said you were here at the meeting in the first place.

Ann said: I knew it wasn't going to happen straight away, but you know.

Donna said: That's why we're both in the shop in town so that people, when they're up-town, can just wander in and have a look and ask the questions.

Kim said: And come in multiple times. If you have something on your mind this week you might be able to answer that question and then in a month or two something else comes into your head. There's no limit on the number of times you can come in and out of the shop, that's what it's there for.

Ann said: I was quite interested, as a young girl when I went to the central school as a high school, we used to look out the window and see the rake going in underground, right outside the school.

Tim said: Oh wow, yeah? A lot of change in that time.

Ann said: An awful lot of change, the whole of Waihi has had an awful lot of change.

Tim said: Yes, are you born and bred Ann?

Ann said: No, I came here as a 5-year-old when my parents bought a farm and that's how I've come to be in Waihi.

Tim said: Right, fantastic. Any other questions? Are the meetings useful?

(Everyone said yes.)

Jeannine said: If there is more to ask about Quattro then come to the shop.

Tim said: The minutes will come out with the answers in them to those questions that you raised.

Tim said: At the last meeting we had a guess at when the next meeting could be and we think 11 March. I'm just looking at Donna and Kim – is that definite?

Donna said: No, that's not definite but we will certainly give you plenty of notice in Martha Matters for when the next meeting will be and also the Correnso one will be advertised in the Eastender.

Jeannine said: The Project Martha one now goes to 6-monthly under the consent conditions.

Donna said: Yes, and what we might do is combine it with the Correnso meeting for the next one, if that's okay with council, so that we get them in sync.

Tim said: Right, so people should not expect the date of the next meeting in the minutes as usual?

Donna said: We will try to work out when the next meeting will be so the date can go into the minutes.

## Conclusion

Tim said: Fantastic, thanks everybody for your questions and input.

Donna and Kim said: Thanks for coming.

The meeting finished at 4.20pm.

**Next meeting:**  
**Martha – 5.30pm Thursday 11 March 2021**  
(CEPA – 3.30pm Thursday 11 March 2021)

Attendance register	
Lee Anderson	Anton Douglas
Christine Bougher	Jane Murray
Ann Stevens	Annie Falconer
Richard Jordan	Sue Moore
Liz Cannell	Leigh Robcke
Kim Calderwood	Donna Fisher
Jeannine Wiki	Russell Squire
Jol Jardine	Tim Clarke
Louise Fielden	