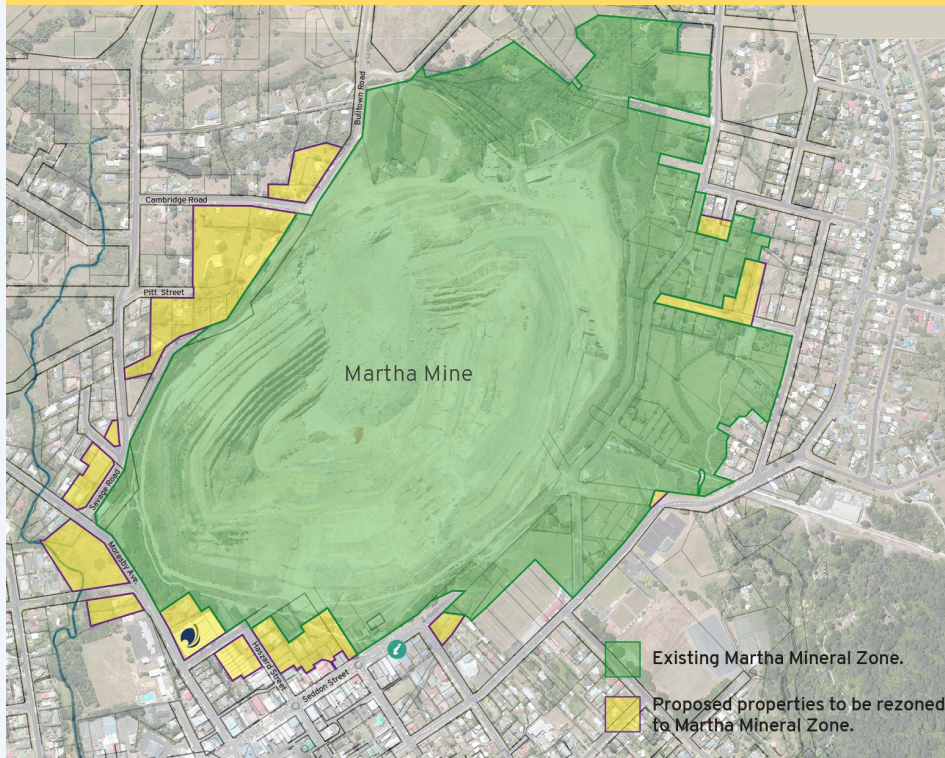


Amenity Effects Program Payments

We will be completing calculations for the AEP in the next few weeks, after which letters will be sent out to both qualifying and non-qualifying residents. For those already enrolled in the AEP scheme, please ensure you have provided your stamped and verified bank account details to Jeannine Wiki: Jeannine.wiki@oceanagold.com or pop into the Project Information Office at 86 Seddon Street between 10am – 2pm, Monday – Friday.



The existing Martha Mineral Zone, as defined within the Hauraki District Plan, allows for surface mining within its boundaries. The proposed expansion of the Martha Pit, as part of the Martha Open Pit Project, would require a change to the District Plan to increase the boundary to include all the land parcels necessary to support the expansion (this is inclusive of areas required for rehabilitation).

No privately owned land will be rezoned as part of the plan change application.

A change to the Martha Mineral Zone doesn't mean we can mine. Any mining activity is controlled by the Resource Management Act and resource consents would still need to be sought after the plan change has been approved.

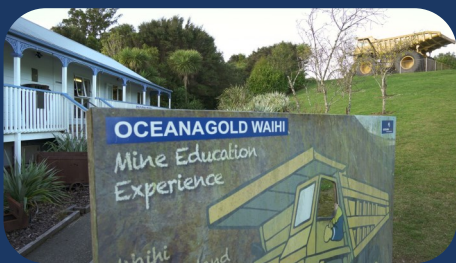
Anyone, including members of the public, businesses, community groups, and councils can make a submission on a plan change request. Once the application has been made, it will be publicly notified.

If you'd like to know more about the proposed changes, our Project Information Office at 86 Seddon Street has fact sheets and large format maps of the area available.

CORRENSEN & PROJECT MARTHA PUBLIC COMMUNITY MEETING

Our next Corrensen and Project Martha Community Meeting will be held on Thursday the 2nd of September at 5.30pm, in the OceanaGold Ed Centre at 35 Moresby Ave.

This meeting is designed to provide an update to affected residents within the Corrensen and Project Martha (including Rex) mining areas about works undertaken since the previous meeting. While this meeting is created specifically for affected residents in these areas, it is also open to any and all members of the public who wish to attend.



RESIDENTS IN THE REX OREBODY AREA:

In the month of August we are planning to begin stope blasting in the Rex Orebody, as shown on the Mine Development Plan map over the page.

If you want to discuss anything to do with these works please visit our Project Information Office or call 0800 924 444.



AUGUST 2021

CORRENSEN NORTH

CORRENSEN SOUTH

TRIO

GLADSTONE RD

MATAURA RD

BARRY RD

DOBSON ST

SUPA
(DAYBREAK)

ROYCROFT ST

KENNY ST

Martha South

Martha North

Mine Development Plan

Published at the start of each month as required by the Corrensen Underground Conditions of Consent, the Slevin Underground Conditions of Consent, and the Project Martha Conditions of Consent.



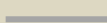
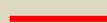
0800 WAIHIGOLD (0800 924 444)

www.waihigold.co.nz



KEY



-  Existing mining
-  Planned mining
-  Backfill
-  Stopes

This information valid for August 2021