

**Project Martha
Correnso (CEPA) / Slevin Underground Project Area (SUPA)
Combined Community Meetings**

Thursday 22 September 2022

The following is a record of the Project Martha and CEPA/SUPA combined community meeting held at 5.30pm on 22 September 2022. Where possible, we have tried to capture individual contributions at the meeting but these do not purport to be verbatim notes.

Welcome

Tim Clarke said: Welcome everybody. This is the third joint meeting of the CEPA and Martha meeting process. It seemed to work okay. I'm hoping that the minutes came back to you okay and that the record of the joint meeting is working from your perspective. Did you get the minutes okay?

Erich Schmidt said: Yes.

Tim said: Brian, I asked Donna about you not receiving the minutes recently and she said they are on the website but if you want them specifically sent to you then that can happen. Would you like that to be the case?

Brian Gentil said: That would be good, thank you.

Glenis Gentil said: When you go onto the website you have to push a "confirm" button to be able to get into the website. Is any data collected when you do that? Does it collect your IP address or identify who you are?

Kyle Welten said: No, you push a "confirm" button to get onto the Waihi North project website. It was specifically for the fact sheets and the assessment of environmental effects. It was a requirement from our corporate office for people to confirm "I'm not going to make any investment decisions based on this information". This is information for the purposes of resource consenting. We collect data on how many clicks we've had on the website but it doesn't track. It's literally a disclaimer to say "I've read this, and I accept that I am not going to make investor relations decisions based on this information", because that's not its purpose.

Erich said: I don't trust it.

Kyle said: That's fine, you don't have to go on to the website. Pop into the office and we'll show you in-person.

Donna Fisher said: Are you going on the Waihi Gold website or are you going on the Oceana Gold website?

Glenis said: It goes to both of them. It goes to the Oceana Gold if I put in Waihi Gold.

Kyle said: We can send you a link to all the different websites.

Glenis said: Yes, because for some reason I can only get onto the Oceana Gold website.

Brian said: Just to follow up on that, if I'm going on there and I have to say that I'm not going to make any investment decisions, but you're not taking my details, what's to stop me from making investment decisions?

Kyle said: Nothing. It's a legal disclaimer from our corporate office to say you need to make it clear that people can't make investor relations decisions based on the information. It's not stopping them, it's just saying don't do it and if you do it then it's on you. If you don't click that button, it will direct you to our corporate website.

Tim said: The meeting is being recorded and if you want to you can request a copy of that recording. Minutes are prepared of the meeting and those are available on the website or if you want them sent specifically to you let Donna know and we will make sure that those are sent out to you. If you have a question tonight, if it's a clarification question ask it at the time because it doesn't make sense to hold onto it until the end of the meeting. If it's a question about something fundamental then I'll take a note of it and we'll go back to it and we'll talk about it towards the end of the meeting.

(Everyone was asked to introduce themselves – see attendance list at the end of the minutes).

Purpose of meeting

Correnso/SUPA

Purpose of meeting

Under Condition 62 of the Correnso consents we are required to hold community meetings every six months. The consent states that the purpose of the meeting is to:

- a) Present information from the preceding six months on the following:
 - i. A description of the mining activities provided for under this consent that have been undertaken;
 - ii. A summary of relevant environmental results;
 - iii. Progress with the IRP property purchase programme;
 - iv. Progress on any matters raised at the preceding meeting;
- b) Receive feedback from the meeting attendees on the consent holder's activities and progress on the matters listed above.

Project Martha

Purpose of meeting

Under Condition 99 of the Project Martha consents we are required to hold community meetings quarterly during the first year of mining activities provided for under this consent, and six-monthly thereafter.

- a) Present information from the preceding six months on the following:
 - i. A description of the mining activities provided for under this consent that have been undertaken;
 - ii. A summary of relevant environmental results;
 - iii. Progress with the IRP property purchase programme;
 - iv. Progress on any matters raised at the preceding meeting;
- b) Receive feedback from the meeting attendees on the consent holder's activities and progress on the matters listed above.

Kyle said: Thanks everyone for coming. As usual we will start with why we're all here. As part of the Correnso project or Martha underground there are conditions to hold a six-monthly community meeting which is an opportunity to come together and talk about recently completed mining activity, planned mining activity, a summary of our environmental results and a summary of what we're doing in the community space. That's for Correnso and Project Martha and like you said I think this is the third one where we've done a joint meeting.

Community Meeting

Outline

- ▶ **POINTS FROM LAST MEETING**
- ▶ **MINING UPDATE**
- ▶ **ENVIRONMENT**
- ▶ **SOCIAL & COMMUNITY**

4

INNOVATION PERFORMANCE GROWTH

OCEANA GOLD

Kyle said: On the agenda are the points from the last meeting which will be a bit of a tag-team from all of us.

Points from last meeting

Underground mine tour for residents

Points from last Correnso & Project Martha meetings:

Underground Mine Tour for Residents: Kyle

Blast Notification Changeover to Project Martha from Correnso: Cassie

Waihi North Project: Application lodged Friday 24 June and all application documents are publicly available on our website. Council's have now completed their initial review and issued their request for further information, this is also publicly available on the HDC website.

Martha Open Pit Project: Now that the Waihi North Project application is submitted, contingent on a change to the MMZ, we will look to pick the work back up for the formal consent application for this Project. We currently don't have an indicative timeframe on this. At this stage, OceanaGold's priority continues to be the Waihi North Project.

5

INNOVATION PERFORMANCE GROWTH

OCEANA GOLD

Kyle said: At the last meeting there was a request for an underground tour, and we said we'd go away and have a think about it. We've done that and it's just not practical from our perspective to get people underground. They'd have to get inducted and ...

Jane Murray said: You're saying that but about a month ago when your guys were going to do the stair walk up Sky Tower there was a raffle being advertised on the community page about winning two tickets to the underground, a once in a lifetime opportunity. Where's the health and safety in that?

Kyle said: They would have had to be inducted; they would have to prove that they're of appropriate health.

Tim said: So, is the question, “Why can others do it, and you, but it is not available to these community members?”

Kyle said: The answer when we went away and looked at it was, “No”, for the reasons that they had to be inducted, had to do all the health and safety associated with it and they had to be of appropriate health to prove that they could come up ladder-ways etc. I wasn’t involved in the decision to raffle off an underground tour, so I will go away and discuss how that got approved, who approved it and what the process was and we’ll come back to it at another meeting. But, at this point in time, the answer is still, “No”.

Erich said: The last time when I have been underground (in 2015 or 2016) we got the safety meeting, clothing, everything was all fine.

Tim said: The decision made is, “No”, but it might help to know why you want to do the underground.

Erich said: To see it again so I can see it and take some photos. I want to see the backfilling.

Tim said: Yes, I remember we had that conversation about what you’d seen and what was being reported on. Lee, what would be the value to you of doing an underground tour?

Lee said: I’m interested and I’d like to go and have a look at the modern Martha underground mine. It’s nothing new, it’s just an extension of what I’ve always done but there’s a barrier.

Jane said: It could actually be of benefit to the people that are affected to let them see how the operation goes and it could put their mind at ease or provoke other things.

Post-meeting answer:

Kyle will speak to this point at the next community meeting.

Waihi North Project

Kyle said: This meeting is to talk about Correnso and Project Martha but as there are continued requests for updates on our other projects I will give a quick update.

The Waihi North Project, which includes the Wharekirauponga Underground Mine, continues to progress. We’ve lodged the application with councils who have subsequently come back and said that they’ve accepted the application. They have provided a request for further information which we expected as that is part of the process, especially in a large and complex project. That means, jump in at any time Leigh (Robcke) if I’m getting it wrong, that the clock has stopped and the ball is back in Oceana Gold’s court to assess the request for further information and then formulate a response. On receipt of that response, council will take it back up and start processing it again. We are going through that process currently.

Tim said: Is the information around the application available at the moment?

Kyle said: Yes, the full application and all the supporting technical assessments are available on the Waihi North website, which is waihinorth.info. The requests for further information are on HDC’s website.

Leigh Robcke said: Yes, on both councils’ websites, the regional council and the district council.

Glenis said: So, when you get back to council with your further information, will that information that is currently there change and will people know what the change is?

Kyle said: We’re still going through the process of how we respond to those questions but the current thinking is we attach our responses as an addendum to the existing report, so, “Here is our response to those specific points and how it affects the report”. That’s the current thinking but who knows where it will end up because we are still going through the process of talking with our consultants, talking with HDC and their consultants and just coming up with what we are trying to achieve, what people are asking and how we respond.

Leigh said: Same as you, I like to see what the actual base document was so I actually printed a whole copy which is 12 folders. So, I actually do have a copy so there is a reference point. Until we know the extent of the response we don’t really know how that information will be conveyed. For Project Martha there was a list of questions that we sent and then there was a response from the company so they didn’t actually amend each of the reports. That’s still to be determined.

Tim said: So, it sounds like there's a preference for actually being able to identify a separate summary of the answers so that you don't have to read through the 12 folders of information to work out what has changed. Some trust would be built if you were able to see what the new answers were without having to work out what they are by comparing?

Kyle said: I can appreciate what you're saying. Message heard which I will feed back.

Erich said: The last closing of the conservation area was for six months. The new one is for five years. Why?

Kyle said: Let's add that to the minutes as something to do some research on and get a specific response to.

Glenis said: Was that publicly notified?

Erich and Helga said: It was in the newspaper.

Tim said: I don't know how it works with DoC land. Do we make that part of the answer in the minutes?

Erich said: Yes.

Post-meeting answer:

The longer closure period is because that's the term recently granted by DoC for our Access Agreement. The previous Access Agreement granted was only six months.

Access Arrangements are considered and decided by the Department of Conservation. There is no statutory requirement for these to be publicly notified.

Martha Open Pit Project

Kyle said: There's not much to update beyond what we updated last time in terms of picking the resource consent application back up again. The process from our end is still largely on hold with our priority being the Waihi North Project. It's still in Oceana Gold's longer term plans but I couldn't give an indicative timeframe of when we're going to pick that consultation back up.

Blast notification changeover to Project Martha from Correnso

Cassie McArthur said: The blast notification changeover to Project Martha from Correnso happened on 10 June so from that date, any time the button is pressed to fire a shot, a blast number will automatically be populated for Project Martha blasts (they were for CEPA before).

Erich said: That is not the case. When ... say on 2 September the blast number was created at 1.40, the actual blast was at 1.42 so people don't get paid for it when there's no blast number and the same here, same here, same here, same here (pointing to results he had printed on paper.)

Cassie said: The difference in the times is because the button has been pressed more than 30 seconds before the actual shot has gone off. Most of the time it works but it's not fool-proof.

Erich said: So people don't get paid (AEP) and there's heaps of ... I've got 20 of them like this.

Cassie said: No, what happens when there's a bit of a mismatch like that is we have a consultant that comes back and reviews all of the data and he will see that those two times are slightly different, and he will correct the time and people will still get paid in that case.

Tim said: People are still paid?

Cassie said: Yes absolutely. We can provide the blast number and the corrected times if you want.

Erich said: Oh yeah, I'll send you a list this long. I will send it to you by email. Send it back to me in hard copy.

Donna said: Send it to me. You've got my email address Erich?

Erich said: Yeah, yeah, yeah.

Tim said: So that will go to Donna, Donna to Cassie, you'll get the numbers, a paper copy back to Erich.

Cassie said: If you want we can also provide a list of all of the payments per blast and how much value was assigned to each blast.

Erich said: Not interested. I don't live there.

Glenis said: Can I ask a question as you're talking about the meetings and how the meetings are advertised? I've become a little bit confused and so have other people I've talked to about who "the community" is. There's been no advertising about this meeting. There's nothing in the paper, there's nothing on the Oceana Gold Facebook page even today. The only thing I could find about it was something that Brian received as a councillor and when I asked him he said he had notification and it was in Mining Matters. We used to get Mining Matters but we no longer get it.

Donna said: You should still be getting it Glenis.

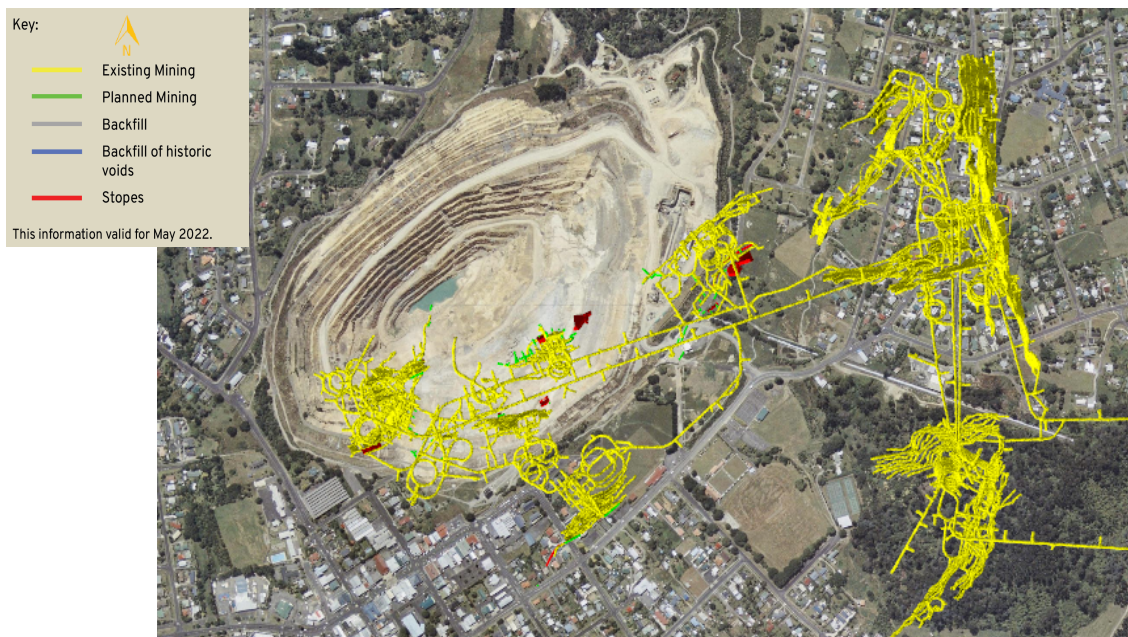
Glenis said: The wording was that it was for people directly affected but it should be for "the community".

Tim said: Can we talk about this at the end of the meeting? We will get through the business stuff and definitely come back to that question because it's important. So, the issues are who the community is and how the meetings are advertised.

Glenis said: Thank you.

Mining update

September Works



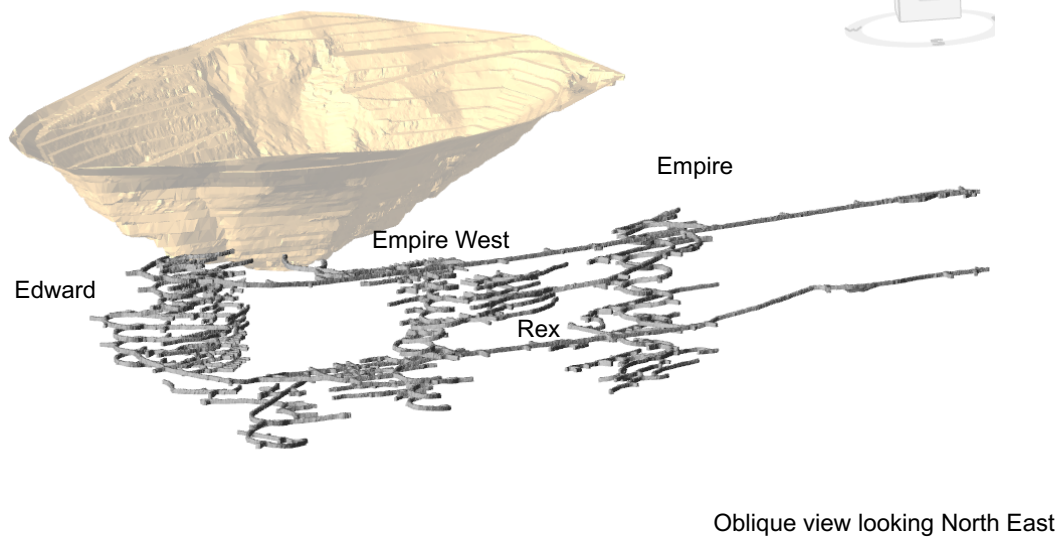
6

INNOVATION PERFORMANCE GROWTH

OCEANA GOLD

Dave Townsend said: In general, nothing has happened too much since last time. We're not doing anything different. We will cover Correnso first. Correnso is just about done. After the blast we fired today there's only about three more to go and then we're going to start backfilling all those drives. There's still a little bit of gold left but it's too narrow and too spindly so we're pretty much abandoning Correnso. Then we'll bog that dirt out and start filling the drives back up.

Project Martha as of September 2022



7

INNOVATION PERFORMANCE GROWTH

OCEANA GOLD

Dave T said: For Project Martha we're still mining in the same areas. We've got Rex down here and Edward, Empire West and Empire are the main ones that we're still mining. The main development is pretty much through all of them at the moment, spread out through the whole lot and production blasting in Edward, Empire West and Royal down in here. That's pretty much it for Martha, nothing's really changed.

Jane said (earlier in the meeting): That slip that's happening over towards the pumphouse side is getting bigger. Last time you said it was loose dirt. Why is the dirt becoming loose? It must have something to do with the blasts that are continually going off. It is getting bigger.

Dave T said: Yes and it comes down through here. The stuff that's washing out is the backfilled old stopes. This ore body that we're mining is also a historic ore body. It's the same one the old timers mined. It dips down this way. The Martha vein dips down this way. The stuff that we're mining through here is the stuff that either wasn't wide enough or wasn't of a high enough grade for the old timers. We're also mining some of the fill they put back in because it had gold in it. The stuff that's washing out down through here is the fill from the old stopes. When we mined the pit we mined that as well. The fill that's in there is like a clay material that's got chunks of quartz in it so as the rain comes down and runs down this wall it basically washes that out. It will get to a point where it will pretty much just dam itself off or we're just going to have to chuck some more fill back in there. The wall and the rock itself isn't failing, it's basically just the stuff that's washing out of the veins through here and it's the same stuff that we're mining down here.

Tim said: Dave, it's not a slip? Just this loose stuff being washed out?

Dave T said: Essentially, yes. The slip that happened on the North Wall happened because of a structural rock failure. There was a wedge of rock formed by two planes and that fell out. That was a structural rock failure. This stuff through here is not like that. The rock is still intact, it's just the clay fill that was put in by the old timers now getting washed out by the rain.

Jane said: When you're saying that, years ago they used to get the concrete trucks in there and concrete that side.

Dave T said: Shotcrete it, yes, and you'll see some of the shotcrete remnants up here. We can't access any of this stuff anymore and not easily so that's what that shotcrete did. Shotcrete is basically just spraying 50mm of cement over the top of it to stop that happening. But, because it's been there so long now, and it just happens in pits, the shotcrete will just erode away and then expose the clay. It's happening in this south-west corner as well. There's nothing structurally wrong with the pit, it just looks ugly.

Jane said: When you expand the pit out towards the Sterling more and you're wanting to move the pumphouse, you're saying that's still going to be solid?

Dave T said: I could double-check and let you know, but I believe the plan for phase 5 takes those out, so it goes down deeper than what it was. So, you won't see those expressions in the wall.

Brian said: Just to clarify "old timers" is not the 1980's is it?

Dave T said: No it is way back whenever it was, 1874 to 1920 or whatever.

Tim said: Jane, you are asking if, once they've expanded the mine south in the direction of the Sterling, whether there will be a nice, clean, solid rock face. Dave, you're going to check that?

Dave T said: I'll just double-check where it daylights out. If we make the pit deeper, the expression of where you see it will be deeper in the pit. Depending on how deep that pit is, you may see it right in the bottom.

Erich said: Make the pit wider.

Dave said: By making it wider, because you're moving that plane and these planes here, you may still see it but that expression you see now will likely be lower in the wall.

Jane said: And the same for where I live? I am just down the road there, across the road from your offices on the corner. I'm going to be 64m away from the edge of the pit so I want to know if that is going to be solid rock or if the same thing is going to happen with loose dirt.

Dave T said: I don't think it will be the clay washing out because old timers were mining up here (away from Jane's) but I will double-check.

Kyle said: Can we just be clear that it will be a solid rock wall but what Dave is saying is that where the old timers have mined, it "daylights" (touches the surface). It is the old timers' backfill that is washing out, not the rock of the pit. The pit is stable.

Dave T said: Yes.

Tim said: Dave, you are going to double check that there's no risk that Jane's house, which she says is going to be 64m from the pit, is on land that contains backfill that she would see washed away?

Dave T said: Yes. I can tell you that the rock wall will be solid, it's just where that expression happens in that wall.

Kyle said: At the start of the meeting I explained that the Martha Open Pit Project has been delayed a little bit and we haven't picked up on the assessment of effects for that yet. Some of those assessments are still to be picked up and completed so we won't have all the answers in that respect in terms of geotechnical whatever. When Dave checks we'll do our best to get the information but some of it might not have been completed yet.

Post-meeting answer:

Phase 5 pit design is still being finalised. The final angle the wall is designed at will determine where expressions of structures (if any) appear in the wall. The final pit design is part of any consent application and will be done in consultation with geotechnical engineers to ensure the wall is stable.

Brian said: In 2015 when the northern side slipped there was talk also about a fault on the pumphouse side. Is that not the case? Is there any information on that?

Glenis said: I think it was described as a small fault by the pumphouse.

Erich and Helga said: Yes, on the pumphouse side.

Glenis said: My niece came to New Zealand around that time, just before the big slip, and she's a geologist and she pointed out where the North Wall was going to go. It went exactly where she said it would and she also pointed over towards the pumphouse and said there was another one there.

Tim said: Dave, you will research that and get an answer to that because it's not in the memory in this room of the Oceana Gold team. We'll check that out as well.

Post-meeting answer:

From our monitoring, there are no geotechnical concerns with any of the faults in the southern wall. The ore body around Waihi and particularly Martha is associated with faults as this is typically how the ore body was formed. Potentially, what was seen was one of the ore bodies daylighting into the pit wall.

Dave T said: This (slide 7) is just a different view. It's probably a bit hard to see but it shows the extent of the area that we're mining. There are three main declines that we're mining at the moment – Edward, Empire and Empire West. We're continuing down. They've got about another 15 levels to go.

Dee Stevenson said: Dave, you're saying there's so many levels below. What's the depth we're looking at there? Is this from the bottom of the pit?

Dave T said: The top of the pit, if you filled that in, is about 1120 RL. We go down to 600 eventually. We're at about 700 now. If you went from the top of the pit there'd be 1120 minus 700, so we're 380m. Eventually we go down to around 600 there, so we haven't got much to go. That's from the top of that pit.

Dee said: So the old timers went as far as 600?

Dave T said: Yes they stopped at 600 because it got too much water and was too hot. There's some drilling down ... the deepest we'd like to go and got some gold around 500 but we haven't got enough gold or enough drilling yet to prove that. The current mine designs go to 600, about the same as the old timers. We're still drilling down to 500.

Tim said: Okay and possibly down to 400.

Dave T said: That's the very most we'd go to.

Glenis said: When you say it got too hot for the old timers, what does that mean? Why did it get too hot?

Dave T said: People generate heat, horses generated heat and all that stuff moving generates heat. The way you get rid of the heat is moving the air. We do it through the big fans. They did it through real primitive ways. We circulate about 400m³ per second through Martha. I think the number from the old timers was about 80.

Erich said: That is why we have fog at the moment over the pit.

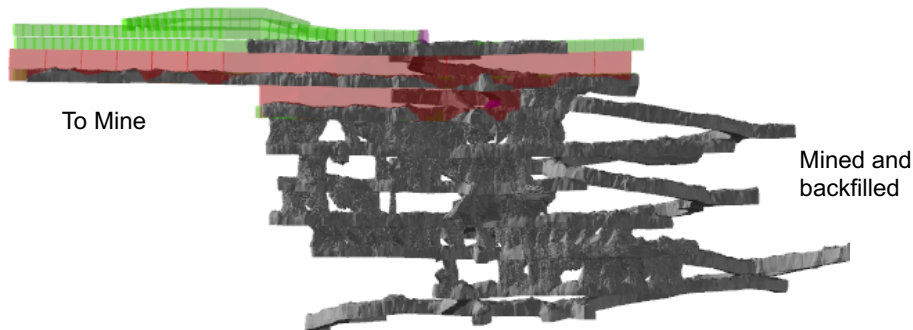
Dave T said: Yes, you would get it in the morning, because the average temperature underground at the moment is about 25 degrees. You throw it out into the pit at 2 degrees and you get the fog.

Erich said: Yeah every time and it goes all over to the State Highway actually.

Dave T said: You see it come out of the Union Hill too, same thing.

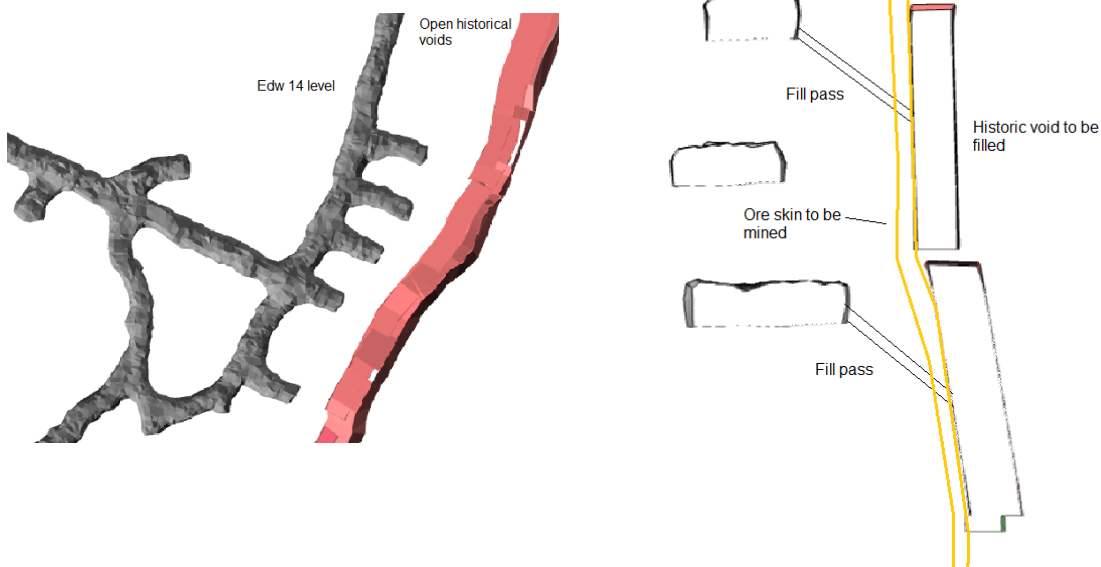
Project Rex

- Level 10 through 4 stopped and backfilled
- Currently developing 2 level
- Vibration being maintained through decking



Dave T said: Last month that level hadn't been mined. We've stoped that now. All these areas are stoped up to level 4. This is level 3. We're developing level 2 so we're pretty much developing the last level in Rex which is level 2. We're about here at the moment so we'll just finish this off and we'll start stoping towards the end of the year. There's not much left to go in Rex. We'll finish that one more level of stoping and then just put some cut and fill over the top.

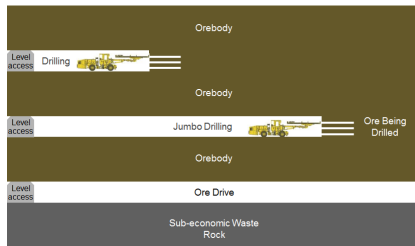
Backfilling historic voids



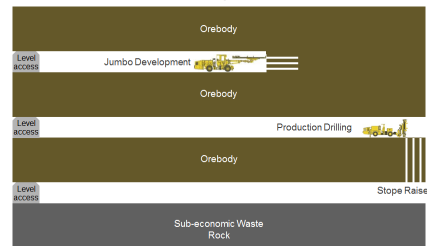
Dave T said: This is the same slide as last time. We talked about filling the old stopes. In the last month we've probably put about 30,000 tonnes of cemented rock-fill into those stopes. We're pretty much just filling the same areas and continuing on.

Modified Avoca Technique

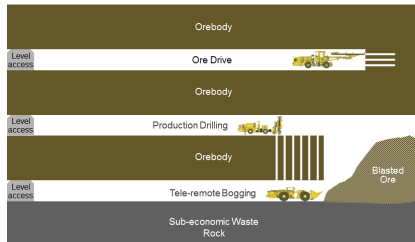
1 Drill drive access



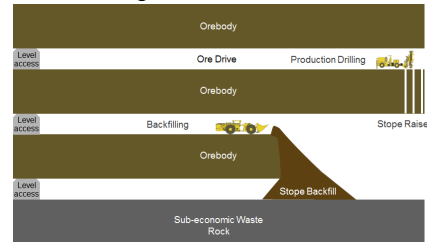
2 Production drilling



3 Production blasting & bogging

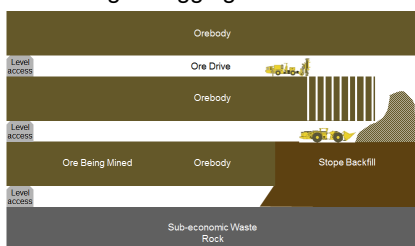


4 Backfilling

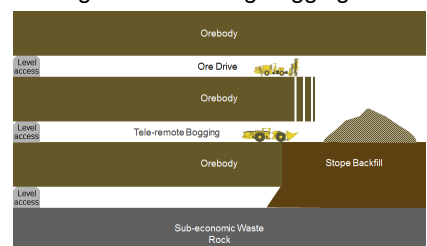


Modified Avoca Technique

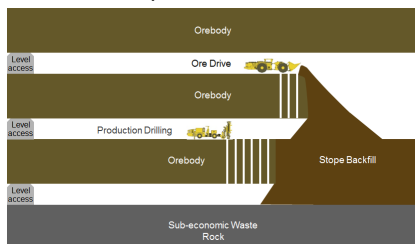
5 Blasting & bogging over backfill



6 Progressive blasting/bogging



7 Multi-level production/backfill



10

INNOVATION PERFORMANCE GROWTH

OCEANA GOLD

11

INNOVATION PERFORMANCE GROWTH

OCEANA GOLD

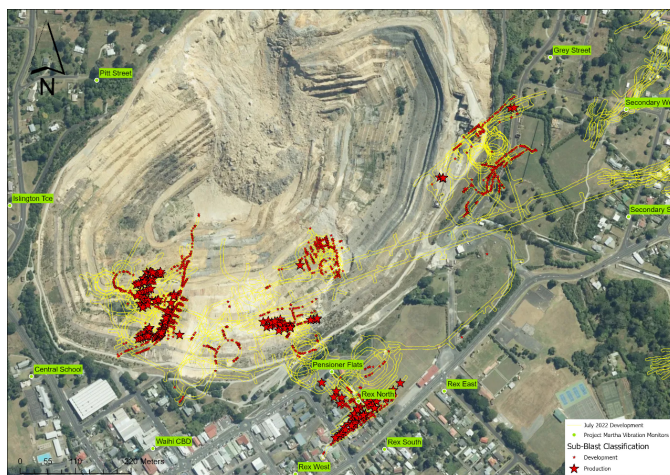
Dave T said: They are the same slides that are already in there, the mining methods.

Vibration

Project Martha

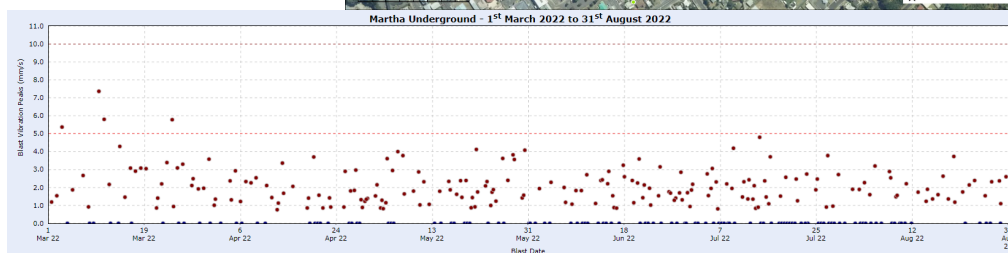
Six-months to date performance (for 6 months from 01/03/2022 - 31/08/2022)

- 313 blast events
- Development blasting
 - Highest average 1.01 mm/s (consent limit 2 mm/s)
 - 95 percentile 2.27 mm/s (consent limit 5 mm/s)
- Production blasting
 - Highest average 1.60 mm/s (consent limit 2 mm/s)
 - 95 percentile 4.29 mm/s (consent limit 5 mm/s)
- No Safety/Maintenance blasting
- 4 blasts > 5 mm/s in last 6 months, still within all compliance limits (all in March, none since then)



Correnso

- Only two blasts in Correnso in last 6 months, both in August and below 1 mm/s vibration



Cassie said: This is for the six months from March to the end of August 2022. For Project Martha over that time there were 313 blast events. For the development blasts the highest average at a single monitoring location was 1.01mm/second. The consent limit for that is 2mm/second so it was well below that. The 95 percentile was 2.27mm/second so again below the 5mm/s limit. For Project Martha production blasting the highest average at a single monitoring location was 1.6mm/second which is well below the limit. For production blasting the 95 percentile was 4.29mm/second which is again below the limit.

We had four high-level blast events within that six-month period and you can see them here. They were all in March and we haven't had any since that time so a big improvement from the underground there and you can see them out there where the Project Martha blasts have been in relation to the monitoring locations and the pit.

For Correnso, as Dave said, things are finishing up so there's only been two blasts in the last six months, both in August and both were below 1mm/second.

Tim said: Those March results would have been before our last meeting as well?

Cassie said: They were yes, it is a rolling average so they get reported again here. It's been less than six months since the last meeting.

Glenis said: What caused those high levels?

Dave T said: We drill a 64mm hole and the ground is really broken and when it's broken it's hard to keep the hole open and put the explosives in. One way of doing it is by put a lining into it. We put a 50mm conduit into it but as you know the way we control the vibration is by deck charging, separating them. You need to be careful when doing that. You need to have really good QAQC (quality assurance – quality control) because the charge operators don't follow exactly what the engineers want and the two charges go off together. That's what was happening. We tried to do one thing to reduce the vibration but we missed out some QAQC steps that caused those. The only reason we stopped it is because we stopped using that lining and now use like a fabric lining. It's more forgiving essentially.

Environmental

Worm Seeding of the TSFs

30 years ago in 1992, the Waihi mine began a program in conjunction with local primary schools to learn about the benefits of earthworms.

Recent surveys consisted of measuring worm numbers in several 20cm³ sods at points across TSF1A and TSF2.

Worms present in 96.5% of the surveyed areas across both TSFs, as well as in areas that were never originally seeded

Indicates earthworms are persisting in and spreading throughout the embankments.



13

INNOVATION PERFORMANCE GROWTH

OCEANA GOLD

Cassie said: I have a couple of slides on some environmental projects that we've been working on in the last couple of months. The first one is the worm survey that was completed. Around 30 years ago in 1992 the company at the time had a project with the local primary school about the role of worms in the ecosystem. School kids came out to the TSF embankments and seeded the embankments with worms. You can see on this map where they put the worms. We've come back in 2022 and done a survey of the embankments to see if the worms are persisting and what sort of numbers they are in. You'll see when the map changes in 2022 we found really high numbers of worms all the way around both embankments. That's really good for showing the pasture is working as it should. Around here we found worms in locations where they hadn't been seeded so they have just shown up there themselves which is encouraging.

Environmental

Bio Control of Tradescantia

Invasive weed that smothers native vegetation and can cause dermatitis in dogs and other animals.

Working with the Environmental Protection Authority and Landcare Research, in 2019 the Waihi Environmental Team released an approved biocontrol agent called the "Tradescantia yellow spot fungus".

'Host specific' fungus, so it cannot spread to non-target species.

Also spreads via spores to infect nearby tradescantia plants – large areas can be controlled easily.

The first release has seen great results, with the entire infestation almost completely disappearing within two years.

Cleared area will be replanted with native species and the fungus can be introduced to other locations around site to further control the weed.



14

INNOVATION PERFORMANCE GROWTH

OCEANA GOLD

Cassie said: The other one is a bio-control project that we've been working on. This is called Tradescantia. You might know it as Wandering Jew or Wandering Willie. It is an invasive weed and it smothers the ground. It can cause dermatitis in humans and dogs, and dogs in particular because they run through it without realising. With Landcare Research we got a bio-control agent which is a fungus and you plant an infected plant within a weed infestation like the one at the top (of the slide) which we did here and then the fungus kills all of the infestation. This is the same area as this, about one year later and you can see that it has killed all of that

weed. It is host-specific so there's no chance of it infecting any other plants. Now that area has been cleared we've gone back and planted native species under here so the Tradescantia can't re-colonise the area.

Glenis said: Is that bio-controlled agent available commercially? Could I put it in my garden?

Cassie said: Yes, you can contact Landcare and they will give it to you. It does cost because they've put lots of money into research and development for it and obviously they have to go through a really rigorous testing process before it is released in New Zealand. We're not allowed to give it to anyone else.

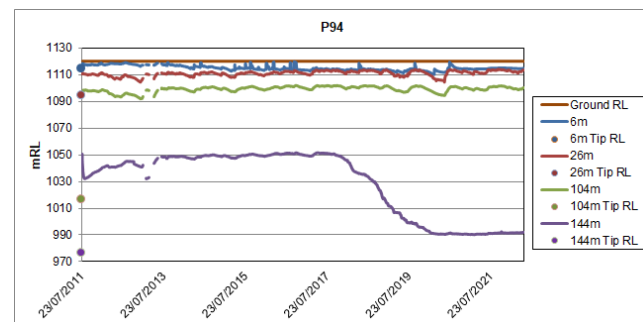
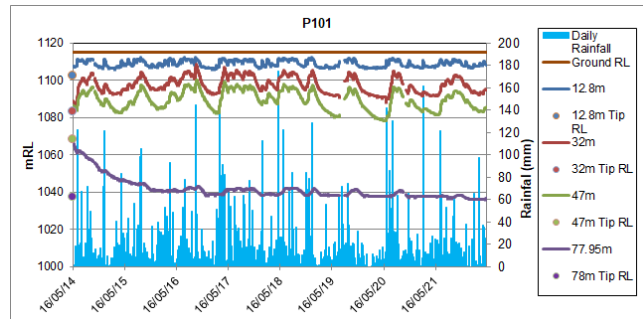
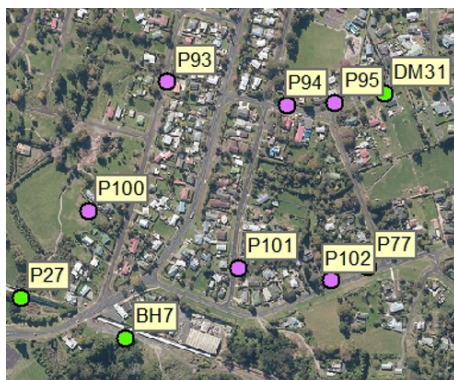
Correnso/SUPA

Dewatering

Established piezometers (e.g. P101)

- Shallow monitors respond quickly to rain
- Deep monitors slow response

Piezo P94 (est. 2011) deeper Andesite piezometer in touch with upper mining levels (deep piezo now settled, shallower piezo levels unaffected)



15

INNOVATION PERFORMANCE GROWTH

OCEANA GOLD

Mark Burroughs said: These are some other monitoring results. This is about dewatering and the monitoring. We have piezometers all around town measuring the water levels around Waihi to make sure there hasn't been any effect. That's just an example. These ones are in Correnso and show, for example, when you get rainfall which is the blue lines, the shallow piezometers will go up and down depending on the season. There were some dry summers where the levels dropped right down but then we get some rain and they shoot back up again. What we're really looking at and are interested in is these deep ones because that's in the hard rock which is more associated with where the mining is. Because they are drawing water from this host rock down here we want to make sure that this line stays nice and even and flat. It is okay for it to change just as long as these ones up here don't change. If you get big drops in these ones up here that's when it can cause things like ground settlement as happened on the drill rig in Gladstone Road a few years ago in the Newmont years. They drilled a hole down that caused the water levels to drop and it caused the water to drain and the ground to settle. Around Correnso we are not having any of those problems with the mining and that was associated with the drill rig. This is one that has dropped down over a long period but now it has stabilised. This is the only piezometer we have in all of Waihi that is showing any mine-related effect.

Tim said: That's P94 and it started dropping around 2017 and stopped dropping at 2019?

Mark said: Yes. Over a two-year period it kept on slowly creeping down. Most likely that is associated with dewatering in the underground. That was up here, that is Mataura Road. But there have been absolutely no effects. If these other lines on the graph were dropping as well that's when you would start to have concerns.

Tim said: It's hard looking from the back of the room but in terms of the level of drop there, that's 1050 ...

Mark said: Call it a 60m drop. Remember that's in the tight, hard rock way down which is 140m below the ground and it's having no effect on these other aquifers above it.

Cassie said: Or the settlement markers.

Mark said: Or the settlement markers on the surface.

Glenis said: What would it take to trigger a response when you see something like that?

Mark said: 5m in one month. If we have a 5m drop in water level in one month that's one of our triggers.

Brian said: So they're checked monthly?

Mark said: Yes, they are checked monthly. Every month we monitor over 100 of these around town to make sure there are no changes. Actually our consent condition is 15m in one month, that's the trigger, but we have it at 5m so we can investigate it sooner. We anticipate that once the mining stops and the dewatering pumps ... will go back to what it was at before.

Tim said: Cool and you would then expect the same non-response from the surface?

Mark said: Yes. We have settlement markers all over town, about 400 of them, measuring the ground level. The surveyors go around every six months and they record if the ground is moving.

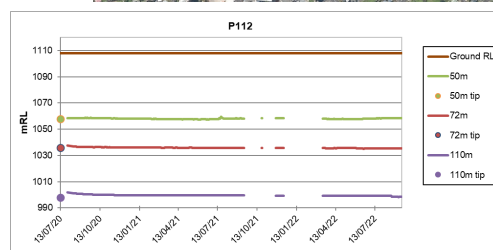
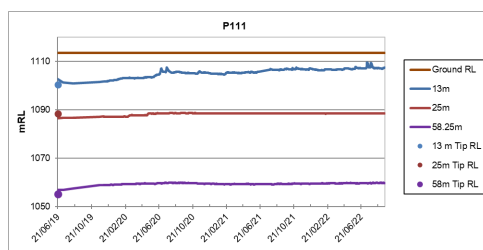
Martha

Dewatering

Newly established piezometers, currently collecting baseline data.

All now installed:

- P111 & P112 with multi-level dataloggers
 - Some logger issues with P112
- 3 extensometers installed. Used to detect any movement in rockmass.
- Two new piezometers to be installed



Mark said: These are some of the piezometers around the Martha pit area. There are a couple of new ones that have been installed over here. There are also extensometers through here to see if there's any ground movement deep down, above the mine. We are wanting to install two new piezometers in the area. All this data gets reviewed by the technical people and they recommended that we needed to put a couple more in to get a better picture of the area. There was a piezometer here that has ... some of these are quite old and they get damaged or destroyed over the years. There was one here that's gone now so we are looking at putting a new one down here by the courthouse and another one behind Tandoori Chambers in Haszard Street.

Brian said: More of a comment, and I mentioned it in council as well, right now we've got a ground zero there, nothing's happening in Martha pit. Would it be good to add dust to your monitoring? You've got all these piezometers checking the water level below. Given what you might be doing with Martha in the future wouldn't it be valuable to get a baseline indication of the dust levels while there is nothing happening?

Cassie said: We've got all of the existing network monitoring as it would if the pit was operating. We've got years of baseline since the pit stopped operating.

Brian said: So, that's continued even though you stopped doing anything in the mine?

Cassie said: Yes and we've even got three new real-time monitors installed to the west, east and north of the pit.

Brian said: How far away from the pit? In other words, for example, right now have you got anything in Seddon Street? Because if the mine does change it's going to be a lot closer to Seddon Street. Would it be good to monitor that now, from the top by the Poppet Head, down to Rob Roy or down to New World or maybe further?

Cassie said: We've got one monitor right near where Mark was just talking about by Tandoori Chambers. Is that the area you're talking about?

Brian said: I know your plans are on-hold at the moment but now is a good time to get an idea of what it looks like when there's nothing happening.

Glenis said: Being able to do a comparison.

Mark said: Next time we could put up a slide on air quality and show the network if you like. We have continued monitoring even though Martha is closed. We monitor for the suspended dust and also the stuff that settles.

Erich said: With the dust it not only comes from Martha but also from your vents. I get it on my car on a regular basis.

Mark said: From the vents? Normally that's just water vapour.

Erich said: No, no, no. It's brown.

Tim said: How do you know it's coming out of the vents, Erich? I'm not doubting you but do you know that it is?

Erich said: Go to the vents, especially Union Hill and all around there you see it.

Glenis said: It is true that you get more than water vapour coming out of that vent, in our experience.

Tim said: So, we are planning a segment on dust for the next meeting?

Cassie and Mark: Yes.

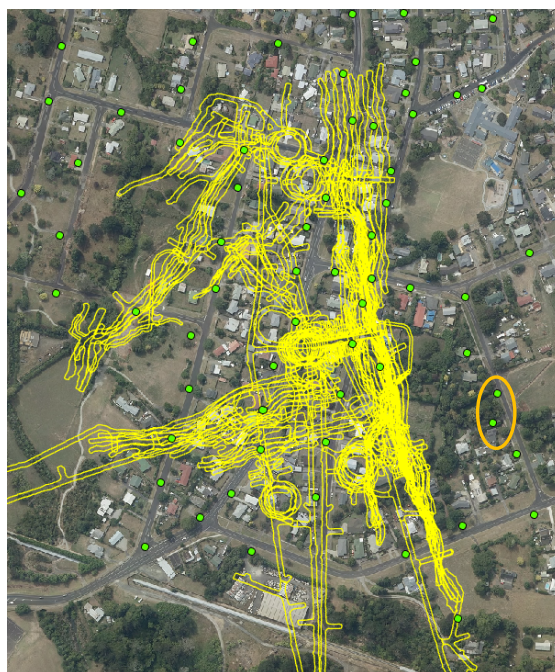
Mark said: And would you also like vent particulate associated with what comes out of the vent?

Erich said: Well, yes. Be specific this time.

Correnso/SUPA

Settlement

- Autumn survey conducted. Report submitted to HDC & WRC
- No significant settlement issues detected for Correnso/SUPA.
- Two minor anomalous tilt results; settlement marks noted as being adjacent to watercourse and potentially disturbed/drainage affected. Negligible change since May 2020 survey.



17

INNOVATION PERFORMANCE GROWTH

OCEANA GOLD

Mark said: A six-monthly settlement survey has been done since our last meeting. Around Correnso there have not been any changes. We reported this one last time. One of these marks had shown some movement but we believe it's associated with some drain work that was done around there. They cleaned the drain out so the ground dried out and it was recorded from the marker moving. Above the ore body around here we've had no changes at all and that's where you would expect to see any movement if it occurred, over the workings. So, nothing at Correnso.

Project Martha

Settlement

- No significant settlement issues detected for Martha
- Negligible change since May 2020 survey.



18

INNOVATION PERFORMANCE GROWTH

OCEANA GOLD

Mark said: The same at Martha. There has been no increase in settlement in any of these at all, nor around the north side where we've got markers and even with the slip there, indicating that the ground is very solid and firm with no issues. There are no real changes on that.

Social and community

Notification of Blasts

The latest blast times and locations are available daily on our website: www.waihigold.co.nz

Production blasting is scheduled between 1.00 – 2.00pm (note: a blast may occasionally be delayed under specific circumstances).

Underground Development blasts may still occur, and due to their small size, will not be notified. These are smaller than production blasts and will occur between:

7.00am – 8.00am

7.00pm – 8.00pm

1.00pm – 2.00pm

Please contact us on 0800 924 444 if you would like to receive text or email notifications.

In-home blast notification devices can also be provided to residents.

19

INNOVATION PERFORMANCE GROWTH

OCEANA GOLD

Kyle said: What's happening in our community space? We're still continuing to notify blasting via text message and email and we still have coasters available. If you're not on the list and you would like to be, touch base with Donna after this meeting or give her a call. We plug that at every meeting. If you want to be notified of blasting, let us know and we'll make it happen.

AEP Payments

For the January to June 2022 payment period, 414 properties qualified for an AEP payment.

These payments totalled \$231,367.48

A breakdown of these payments are:

- 310 properties in the Project Martha area qualified for a payment, totalling \$204,117.48
- 104 properties in the Correnso Project area qualified for a payment, totalling \$24,750.00

We are still in the process of signing up new properties (134) that have qualified for a payment for the first time in the Project Martha area.

Since 2007, 8,266 payments have been made totalling \$5,382,405.51.

Kyle said: For the January to June AEP payment period there were 414 properties that qualified. Jeannine and Donna have been busy going around and signing up the 134 people that have previously been in the scheme before. The payments totalled over \$230,000 and consistent with the blast data that Cassie and Dave talked about, the majority of payments were made to the Project Martha area and we've still managed to scoop a few people up in the Correnso area.

Tim said: Cool. Erich?

Erich said: Why does it take the AEP notification 61 days until we get it?

Kyle said: As you can imagine Cassie and co have a big process of verifying all of that data which you were questioning. We had to go through that process and then a third party does an analysis of it.

Erich said: It was never this long before. It was only four to five weeks or six weeks. Now it's 61 days.

Cassie said: We've just moved into the Project Martha area so there's 134 new people to sign up which takes quite a long time as you can imagine. Jeannine and Donna have to go around to everyone and get their new details and we can't start paying the payments until we've got all of the list finalised.

Donna said: The other thing is that the bank don't do cheques anymore. We have to get everybody's bank account details and because the banks are shut in Waihi now and it has to be verified by the bank, people are limited to when they can go to the bank and get those details.

Tim said: So, first of all there is a bunch of new people that you are signing up and you've got to get all their details and you can't provide the package of information until you've got everybody on the list?

Donna said: Yes and the second thing is because the bank don't do cheques now we have to get a verified, stamped account number from the bank, on bank letterhead, with your name, address and bank account number so we can pay directly into your account. Also, because the banks are closed and most of them only open two days a week, people have to wait for the bank to be open to go in to get that bank letterhead with a stamped account number. Then it has to be dropped off to us, we have to enter that information, scan everything, put it in the spreadsheet and that gets sent to Dunedin where our accounts payable are and then they have to load all of that information so that you can be paid. So, it's quite a lengthy process but it has to be done that way to make sure that we are paying into the right bank accounts.

Tim said: When it's all up and running Donna, will it be more efficient and quicker?

Donna said: It will be more efficient but we will always have some new people, especially with rentals. People move all the time so there will be a new tenant and they have qualified and we have got to do the same process

for them. It shouldn't be as painful next time but 414 properties and 130 new sign-ups was quite a mission. We have visited them all now but are waiting for a lot of people to bring that information in.

Glenis said: 414 properties sounds like quite a lot of properties to receive an AEP payment. Do they get payments because a blast has gone over?

Kyle said: The qualifying criteria is two blasts over 1.5mm/s in a single month. So yes, if they receive that in a single month they qualify and 414 properties qualified.

Mark said: Those blasts at the start of the year qualified a lot of people who normally didn't qualify.

Community

2022 Mazda BT-50 Ute Donation to Waihi LandSAR

Waihi LandSAR is a group of 24 volunteers available 24/7 to undertake search and rescue missions in Waihi and other urban and remote areas in Waikato and Bay of Plenty.

Over the last eight years they have been directly involved in saving the lives of seven people and assisting another 35. Volunteers devote hundreds of hours each year, with responses ranging from searching for lost hikers to helping locate family members suffering Dementia or Alzheimer's.

"We do quite a bit of travel out of the area to assist with neighbouring search operations and regional training... but up until now we've all just relied on our own personal vehicles for transport to get anywhere. So to have a group vehicle available is a huge asset."

Darren Butler, Chairman of Waihi LandSAR.



Kyle said: This is a bit of an embarrassing one to start with but Oceana Gold is a customer of Farm Source. We buy all of our fence palings and fence wiring and all the rest of it from them. We inadvertently entered ourselves into a competition to win a ute and low and behold they pulled our name out of the hat and Oceana Gold Waihi won a BT50 from the local Farm Source.

We saw it as a good opportunity to pay it forward to someone more deserving than us. We donated it to the local LandSAR (Land Search & Rescue). They are made up of 24 volunteers and in the past eight years they have saved about seven lives, contributing to search and rescue activities.

Prior to getting this ute, they had a trailer with all their kit on it and someone would have to drive their personal vehicle to load it up onto their personal vehicle and drive to where the search and rescue operation was happening. This lets them have that sitting in the shed with all their kit in it and they can jump in and race off to an emergency situation. It's been in the paper but we thought we'd share what's going on there.

Brian said: Where is it based?

Kyle said: I'm not sure where their base is. It's the Waihi LandSAR. It's totally over to them. We've given it to them. I'm not sure where their base is.

Community

Waihi's Mines Rescue Team Comes in First

The Sky Tower Challenge sees fire fighters climbing 51 flights of stairs (1,103 steps) while carrying 25kg of gear in an annual event to raise money for Kiwis living with blood cancer.

The Mines Rescue Team from Waihi gained first place in the recent Sky Tower Challenge for teams of 6-9 firefighters, raising just over \$35,000 in sponsorship.

The team from OceanaGold Macraes Operation in Otago gained second place in the 10-plus team members category, having raised over \$30,000, making OceanaGold employees one of the biggest contributors to the event.



22

INNOVATION PERFORMANCE GROWTH

OCEANA GOLD

Kyle said: Every year the boys in the Mines Rescue Team jump on-board the Sky Tower Challenge which is climbing 51 stairs in full emergency response kit. It's a fundraiser for leukaemia and blood cancer. They did it again this year and managed to get first place in their category and raised over \$35,000 in sponsorship for blood cancer and leukaemia. So, good on those boys. They always get around and hold the hat out and people seem to jump on board and support them so good on them because it's for a good cause.

Community



24

INNOVATION PERFORMANCE GROWTH

OCEANA GOLD

Kyle said: I think last time was the first time we introduced Jump Start. This is the driver licensing programme. In Phil's engagement with the college they explained that one of the biggest barriers for students once they leave school, or even while they are at school, is that to get employment or do further study they need a driver's licence and a car to get there. We jumped on-board and partnered with Blue Light and NZ Police and started this Jump Start driver licensing programme. It's been running for over 20 weeks and we've had 10 students get their driver's licence. There's been lots of driving and they have driven the length of New Zealand three times over now. We've extended it to adults as well and we've got our first adult student. They come through a NZ Police recommendation and Harley North sends those through to Phil. That's just an update and if there are any questions, I'm happy to answer them.

Dave Wellington said: Do you let them drive over 30kph? Because at 200 plus hours for 6,000km, if you do the maths, it means that the maximum speed they could do is 30kph. Do you keep a book? Because I see a lot of miners driving that around doing odd jobs.

Kyle said: Yes, we keep a book.

Dave W said: So the \$1,500 worth of diesel isn't the miners going to Hutchins Engineering?

Kyle said: We don't drive to Hutchins. We drove it to the panel-beaters the other day because one of the students backed into a pole but beyond that we don't really do much driving.

Dave W said: I've seen the miners driving that wagon more times than I've seen the kids driving it.

Donna said: They might have been going to Goldfields.

Dave W said: If you're going to do your propaganda you've got to do it properly.

Brian said: I just want to say it's a great initiative. But the issue is with NZTA and VTNZ who are the people who take you for your test. There's an eight month wait sometimes from when you book. It's well known that if you go to Thames you fail two to three times. They don't take you on the full course. Once you've done three "criticals" they stop. They don't do the rest of the course and make it proactive and say, "Here's the whole course, you have failed but we want you to do the whole course so you can work on these things". So, you're stuck between a rock and a hard place. There is a lack of testing people available across the nation.

Glenis said: We've been quite hot on talking to VTNZ and NZTA.

Tim said: Is there something that you think that Oceana can do? Report back to us.

Kyle said: We don't want to bite off more than we can chew. It's been 20 weeks and we have got one adult student who has come as a recommendation from NZ Police because he's doing exactly what you described – driving on his learner's licence and getting pulled up. It's a different scenario. Phil is slowly snowballing it and hopefully it will get bigger, but this is where it's at, at the moment.

Glenis said: There's a place called "Driving for Change Network" which is trying to do something very similar.

Dave W said: Oceana is spending about \$3.50 a day on it.

Kyle said: I'm not saying that we're spending a lot of money on it.

Dave W said: When Newmont was here the donations to the town were like \$270,000 a year. We've lost about \$120,000 in sponsorship to this town since Oceana took over. The mine's not really putting their hand in their pocket.

Tim said: Kyle, is this to compensate Waihi?

Kyle said: No, this is just a shared infrastructure partnership opportunity that we've jumped on.

Dave W said: It's propaganda. It's for the community isn't it? They're not doing it for love.

Kyle said: I think you'll find that Phil, who looks after this, is doing it for love.

Dave W said: It's the propaganda that pisses me off.

Kyle said: I appreciate your feedback.

Community

Summer Internship Programme Launched for 2022/2023

Currently recruiting for the next OceanaGold Summer Internship Programme for the 2022/2023 period across both our Waihi and Macraes (Otago) operations. We're looking for people currently in their second or third year of a relevant Degree qualification who can commit to the programme from the end of December until Mid-February.

The internships are paid positions with the potential for a permanent, full-time position upon graduation.

Applications close Friday, 30 September 2022

<https://careers.oceanagold.com/>



25

INNOVATION PERFORMANCE GROWTH

OCEANA GOLD

Kyle said: This is my last slide. Macrae's and Waihi are both offering the Summer Internship Programme which is for tertiary students in their second or third year covering anything from environment to engineering to surveying. They just need to be available between December and mid-February. Applications close soon but we have been advertising it and they are paid positions so it's an opportunity to earn some money on the summer break and apply what they've been learning in a real-life workforce scenario.

Brian said: You push that through the schools eh?

Kyle said: Yes, we push that through the schools and there's an unofficial hierarchy that if you're a local you get preference over someone with the same skills and attributes who's not local.

General questions

Tim said: What questions do you have?

Water quality of the TSF

Erich said: Heaps. This is the water that comes out of the (tailings) ponds, only it's not complete. There's no legend in it. I created my own. There are 30 different elements in it from hydrogen to aluminium to arsenic to copper, cobalt, lead. Why is the legend not in here? It took me five hours or something to do that.

Tim said: That was the information that was promised to you at the last meeting?

Erich said: Yes.

Tim said: You broke that down and you've got an analysis?

Erich said: Yes and you can put it in your minutes, what is in the water. Put it in the minutes. The names (of the elements). The quantity is in there. It's minimal. I understand this.

Tim said: If we put the names in do we also need to put the quantities in otherwise people are going to see the names of the elements and worry about it.

Erich said: No.

Dave W said: Give them the chance to investigate it themselves.

Tim said: Are you saying that the water quality on the tailings ponds exceeds the parameters?

Erich said: No, I don't say that. Why? I say only what is in there.

Tim said: That it contains those things?

Erich said: Yes.

Tim said: Leigh Robcke, what's the process in terms of the content of the water in the tailings storage facility?

Leigh said: That's mainly a regional council issue but when there's a consent they have all their scientific people looking at what's in the water naturally and also what ends up through the process. Mark would know better than me, but it's subject to a whole lot of peer review analysis and everything else every year.

Tim said: Alright, so I'm concerned again though Erich that if I just put a list of those things in, all that's going to do is make people say, "How much and is it safe? "

Dave W said: Why not let them ask that question? What are you scared of?

Tim said: I don't want to create a sensationalising process. If you want to put the names of the elements in then the numbers of what they are should be in there too and the safe drinking standards as a comparison.

Erich said: No, it's nothing to do with drinking. They let it out into the river.

Kyle said: What are we trying to achieve, Erich? I'm happy to go away and get Mark to list out what the parameters are and whether or not we're meeting them but I'm just interested in knowing what Erich's trying to achieve by doing that.

Tim said: Who sets the parameters?

Leigh said: The regional council. There are experts that the regional council employ.

Dave W said: Yeah but maybe we don't agree with the council. Maybe we should argue with the council, fair enough, but the mine is the cause of it. The mine is turning the tap on whether it's in the parameters or not. It's our environment you're screwing.

Tim said: But is it screwing the environment?

Dave W said: The amount of water they're pumping in for one. How many gallons an hour, how many gallons a day is going into that river?

Mark said: About 4 million cubes a year.

Dave W said: Just because it's within the parameters doesn't make it right, mate.

Tim said: Pause. We've got some other things we need to talk about before the end of the meeting. The next question that you have, Erich?

Testing the sediment in the TSF

Erich said: Where is the analysis of the sediment from the pond? You said I could have it. It's in the minutes twice.

Mark said: The report has the water quality results from that sediment so it reflects exactly what is in the TSF.

Erich said: That is not what I want.

Mark said: It's the tailings, the leach column results.

Erich said: Take a tube, put it in the pond, in the sediment, close it up, take it out, what comes out and then you've got so much of a sample, and you can analyse it. That is what I want. It's simple.

Mark said: I'll see if we've got that. It's not something we do often. They may have done some historically so I will find out for you. The water results that come out of that material is what's in that material.

Tim said: Let me ask you a question, Erich. The company is saying that the water that comes out is going to have the stuff in it that it's just run through. Why do you say that's not good enough?

Erich said: No, not good enough.

Tim said: Why not?

Erich said: How much is in the sediment? We've got 27 million tonnes of dry matter in the ponds. When one of your bloody ponds breaks then we can forget Waihi and we've got 21 million cubic metres of wet stuff.

Tim said: I don't know whether those figures are right but is that what you're worried about?

Dave W said: Erich doesn't want to know the water quality, he wants to know the residual in the ponds.

Tim said: Mark is going to see what's possible and report back to us.

Post-meeting answer:

No deep TSF core samples are possible. However, speaking to our geochemist he said the results recorded previously from the spigot when discharged would be similar to what is in the dam. Mark will add a slide to the next meeting about these results.

Mark said: We are required for every new ore body to get a composite sample of the tailings. That is sent off to Sydney where they put it altogether into a tube. So, you have a tube of sediment and they run water through it and analyse what comes out because that potentially is what will be affecting the environment with the water. The Correnso one went for five years – they tested it every week for five years until we stopped it. Now we're about to send off samples for the Martha tailings to see if what comes out is any different to Correnso. The results from that Correnso test are in the report that I supplied.

Tim said: And the testing at Correnso stopped because it wasn't an issue anymore. Is that why?

Mark said: They had enough information and we got permission that we didn't have to keep on continuing with this testing.

Erich said: And it stopped in July 2015.

Mark said: That was one of the reviewers that comes to site every year from regional council. He is an independent geochemist and he said we don't need to do it any longer. I will check when that was.

Post-meeting answer:

Correnso tailings leach column ran for 156 weeks from July 2015 to August 2018.

Invitations to the community meetings

Glynis said: Can we get back to why this isn't this a general community meeting? I couldn't find any information about this meeting tonight. The only reason I knew about it was because Brian is a councillor and got it in Mining Matters. Once upon a time we used to get the Mining Matters.

Donna said: You should still be getting it.

Glenis said: No I haven't had it since Covid.

Donna said: Okay I've written that down.

Glenis said: There was nothing in the paper, I looked on your Facebook page and went back a bit and there was nothing. What I found in the Mining Matters is that "the meeting is designed to provide an update to affected residents within the Correnso and Project Martha including Rex mining areas about works undertaken since the previous meeting". Who decides who is affected? Because according to what we saw before there are 414 affected properties at least.

Donna said: Yes and they all get the Mining Matters.

Kyle said: I appreciate that it wasn't advertised as well as it could be so we need to ask, "What could Oceana Gold do better to advertise next time?" Do you want it in the paper? Do you want it on our Facebook page?

Glenis said: I just think when you've got a Facebook page, when you're having something, put a public ... put it out there. It's kind of like a secret meeting more than a community meeting.

Kyle said: I am absolutely hearing you and the purpose of this meeting is to talk about Project Martha and Correnso but it doesn't mean we can't advertise it in the paper and on the Facebook page. Put that in the minutes and I will make sure they happen for next time. If you've got any other suggestions I'm open to hear them.

Dave W said: This should have been advertised in the paper.

Post meeting comment:

Oceana Gold confirmed that the next meeting will be advertised in the paper and on Facebook etc.

Glenis said: The thing is I looked at consent 99 for community meetings and it says "the consent holder shall hold a consultation meeting open to public. The meeting shall be called ..." and then it goes through the details. With a public meeting you would normally advertise it to the public. You wouldn't decide that there is a small sector that you consider to be affected that you only invite. I think that's why people like this gentleman here and perhaps others get suspicious. It basically comes down to how you're communicating.

Kyle said: I'm not arguing, I'm saying we'll do it next time.

Tim said: I want to capture that but I also want to make sure that we don't set ourselves up for the next meeting. What if we get 50 people turning up thinking it's about something that is not on the agenda like Wharekirauponga?

Dave W said: What would be the problem with a meeting about Wharekirauponga, the whole damn lot, what is the problem with that? I've asked time and time again.

Kyle said: There's plenty of opportunities for engagement on Wharekirauponga.

Dave W said: But not a public meeting. You haven't got the whole town together. You're dividing and conquering. You're having little meetings with different groups. You're dividing and conquering. You're keeping us in the dark. That's the perception.

Glenis said: That is how people are feeling. That's the feedback we were getting for the past four or five years.

Tim said: Pause there, Dave. Got you. Stop talking for a second for me please. Lou, you've captured that about the concern in relation to the lack of opportunity for a meeting about, for example, Wharekirauponga. Glenis, you're saying the same thing about that general opportunity.

Glenis said: I'm just saying that it's the way the wording is done and the lack of seeing a notice. You could still say it is a meeting about Correnso and the Martha Project for those residents who feel they may want to know more information. You don't have to put Wharekirauponga in there because I understand that you haven't even got a consent or an application that's going through the process right now so that can come later as it should really. But for a community meeting that's listed in a resource consent, when it says "community" – the people in the community think that it's them but they read it or they don't read it and hear about it and they think that they've been excluded deliberately.

Brian said: When you say affected parties, the question is about what people think "affected" means. It might not be in my back-yard but if I'm living up in Waihi west by the college it's not affecting me. But I might want to buy in Waihi east or I might want my children to go to that school so it affects everybody whether you live there or not. It seems that the company chooses what it means by "community".

Kyle said: Our description of local is always defined as a 30km radius or a 30-minute drive time and we hash-tag that or start that on all of our documents where we are referring to local. So, I would dispute that we chop and change "local". As part of the Correnso social impact management plan, one of the management conditions or measures was that we had to define "local" and that's what we've done. From 2014 onwards it's always been defined as a 30km radius or 30-minute drive time.

Erich said: Under consent condition paragraph 99 it is written "open to the public". I can come from Christchurch and go to this meeting.

Kyle said: I think we are arguing about different things and we've already conceded that we will try and do a better job of advertising next time.

Helga said: Sometimes it was advertised so small in the article that people didn't read it. It's the same as the little pamphlet we get every month. It's written small.

Eric Rhodes said: With this meeting ... public meetings ... if you threw it open to the public as they are saying you could get people come from all over the place. What size building would you need to hold it in? If you had it, say, for all of Waihi then you've got a better idea. But if you throw it open to anybody like from Napier or way up north ... I mean you'd never hold them all in the building.

Tim said: We will work on a way of balancing that out.

Kyle said: Sure.

Glenis said: Yes and I'm not suggesting that the whole of New Zealand should be here but I think just a little more care about how it is communicated to this local Waihi community.

Question about Overseas Investment Office

Glenis said: At the last meeting I brought up about the Overseas Investment Office (OIO) and the 75ha of residential land and I haven't heard anything back.

Kyle said: It was answered in the minutes so apologies that you didn't manage to get the minutes.

(Kyle read out post-meeting answer from the previous minutes that said: "There hasn't been an OIO application to purchase 75ha of residential land. Likely what is being referred to is the standing consent with the OIO granted us in 2020 which authorises 15 transaction purchases over a total of 75ha but each property no more than 5ha which was part of the Martha Underground so we could purchase the Rex properties.")

Glenis said: That is a big area. What would you be buying that residential land for?

Kyle said: We were buying it under the Project Martha consent conditions where we had to offer to purchase.

Leigh said: I think it's probably a result of the consent conditions whereby if landowners are having stopes or declines under their house there is a condition that says that there's an option for the company to buy them. So, it's like a chicken and egg thing. The company needs to have permission from the OIO to actually purchase those properties first. That's what that consent would be for. I just want to say that I think the wording in the OIO consent is that "it's incidental to mining". So, it's not just to go and buy land for anything, there are some words in there about buffers and roads if things are going to moved. But it's incidental to mining so it has to be associated with the actual mining activity.

Glenis said: I think it runs out in 2023 because I've got a copy of it in my bag here. So, how many properties have been bought?

Kyle said: I know at least one has been purchased but I don't know off the top of my head how many. Do you know how many off the top of your head Donna?

Donna said: No, I don't know but I can find out. Not everybody in that area wanted to be purchased.

Glenis said: I've got information here. It says, "Oceana Gold plans to acquire residential land for various purposes related to its mining activities in Waihi that intends that the majority of residential properties purchased under the standing consent will be due to meet to comply with conditions of resource consents. In this scenario they envisage that most of the properties will remain suitable for residential use until mining commences and/or while mining takes place. They also expect to purchase residential land for physical mining works that was for extension, relocating roads and for use as buffer land" and it's for a maximum of 15 transactions by 31 October 2023.

Donna said: Yes and 15 properties in the Rex area is exactly the right amount.

Glenis said: So, is that the area where the pit will be extended?

Donna said: No, that's where we're mining currently.

Glenis said: So, is there 75ha?

Kyle said: I don't know where they plucked the 75 from but all I can tell you is what its intended use was for and it's for the purchase of these Rex properties.

Tim said: The wording of this is “which authorises 15 transactions purchases over a total area of 75ha”. It doesn’t say that you’re buying 75ha of land.

Donna said: No, these are residential properties. Most of them are on quite small plots of land, less than ¼ acre.

Glenis said: Yes, it does say, “up to”.

Post-meeting answer:

Oceana Gold confirmed that for Project Martha 11 properties have now been purchased with seven opting to take an ex-gratia payment.

Tim thanked everyone for their attendance and input to the meeting.

The meeting finished at 7.21pm.

**Next meeting: Thursday 9 March 2023 at 5.30pm
(Combined CEPA/SUPA and Martha meeting)**

| Attendance register: | |
|-----------------------------|-------------------------|
| Lee Anderson | Jane Murray |
| Dave Wellington | Erich and Helga Schmidt |
| Dee Stevenson | Eric Rhodes |
| Brian and Glenis Gentil | Leigh Robcke |
| Kyle Welten | Mark Burroughs |
| Dave Townsend | Cassie McArthur |
| Donna Fisher | Tim Clarke |
| Louise Fielden | |