

Project Martha / Correnso (CEPA) Combined Community Meeting

Thursday 14 March 2024

The following is a record of the Project Martha and CEPA/SUPA combined community meeting held at 5.30pm on 14 March 2024. Where possible, we have tried to capture individual contributions at the meeting, but these do not purport to be verbatim notes.

Welcome

Tim Clarke said: It's Thursday 14 March 2024 and this is our sixth combined CEPA and Martha community engagement meeting. Welcome everybody, let's look at the purpose of the meeting and the agenda for tonight.

[Tim explained his role as the independent facilitator to ensure that everyone gets an opportunity to speak, that questions get asked and answered and to ensure that the meeting covers the issues and subjects that people want to hear about.]

Tim said: The meeting (as usual) is being recorded to help us prepare the minutes and a copy of the recording is available for people to listen to if they would like to.

[Tim introduced Louise from Collaborative Solutions whose role here is to type up the minutes. Tim stressed that it is important that everyone has the opportunity to speak and it is important that issues get raised but also that it is important that we do not interrupt each other so that we can hear what is said and provide an accurate set of minutes. He asked that people indicate when they would like to ask a question and he will facilitate that.]

Everyone was asked to introduce themselves and their reason for coming to the meeting (see attendance list at the end of these minutes).

Purpose of meeting

Kyle Welten said: I've been working for Oceana Gold for about 5 years in the community engagement team. It is a consent condition that we talk to Correnso and Project Martha, specifically the mining activities that are provided for under those resource consents undertaken in the past 6 months, a summary of the relevant environmental results and progress on the answers that we were not able to provide at the previous meeting.

Correnso/SUPA

Purpose of meeting

Under Condition 62 of the Correnso consents we are required to hold community meetings every six months. The consent states that the purpose of the meeting is to:

a) Present information from the preceding six months on the following:

- i. A description of the mining activities provided for under this consent that have been undertaken;
- ii. A summary of relevant environmental results;
- iii. Progress with the IRP property purchase programme;
- iv. Progress on any matters raised at the preceding meeting;

b) Receive feedback from the meeting attendees on the consent holder's activities and progress on the matters listed above.

2

INNOVATION PERFORMANCE GROWTH

OCEANA GOLD

Project Martha

Purpose of meeting

Under Condition 99 of the Project Martha consents we are required to hold community meetings quarterly during the first year of mining activities provided for under this consent, and six-monthly thereafter.

a) Present information from the preceding six months on the following:

- i. A description of the mining activities provided for under this consent that have been undertaken;
- ii. A summary of relevant environmental results;
- iii. Progress on any matters raised at the preceding meeting;

b) Receive feedback from the meeting attendees on the consent holder's activities and progress on the matters listed above.

3

INNOVATION PERFORMANCE GROWTH

OCEANA GOLD

Agenda

Community Meeting

Outline

POINTS FROM LAST MEETING

MINING UPDATE

ENVIRONMENT

SOCIAL & COMMUNITY

4

INNOVATION PERFORMANCE GROWTH

OCEANA GOLD

Kyle said: We run through the questions we needed to answer from the previous meeting, Patrick will give us a mining update, Mark will provide the environmental monitoring results, and then I (with support from others) will talk to some of the social and community things which will include an update on where our current approvals process.

Points from last meeting

Points from last Correnso & Project Martha Meetings:

Pre meeting questions

- Notification of Meeting - Josh
- Contents of Tailings Storage Facility – Tim
- Vent Shaft Air Emissions – Mark
- Community Survey – Kyle
- Apologies for non-attendance from OGL General Manager Justin Johns - Kyle

5

INNOVATION PERFORMANCE GROWTH

OCEANA GOLD

Notification of meeting

Kyle said: Last time there was some discussion around whether or not the text for the meeting invite was clear that it was open to everyone so we made some changes to it. It was published in the newspaper, Mining Matters, Facebook and local grapevine and the text read:

Correnso & Project Martha Community Meeting – March 14th

Our next Correnso and Project Martha Community Meeting will be held on Thursday the 14th of March from 5:30 to 7:30 pm. This public meeting is designed to provide an update about works in the existing Correnso and Project Martha (including Rex) mining areas undertaken since the previous meeting. The meeting will be held in the OceanaGold Education Centre on the corner of Moresby Avenue and Savage Road. This meeting is open to the public and all are welcome. For queries on all other current or proposed projects, please visit or call the Project Information Office.

Tim said: Thanks Kyle. After it was published, I checked with Dave and he had read it and said it was “okay”.

Dave Wellington said: 18 months of piddling into the wind but at least it doesn’t specify any areas or locale (regarding who are affected residents).

Kyle said: The reason for the to-ing and fro-ing is that we did not want to be misleading about the focus of the meeting being on Correnso and Project Martha. We have lots of other information provision processes and we did not want you to think you were going to be presented with information at this meeting about a subject that you were not. We have a condition that says we need to present about Correnso and Project Martha and for the most part that is what this meeting is about.

Glenis Gentil said: Also the word “public” was not included in any of the previous notifications despite the “public meeting” part being a requirement of the consent.

Tim said: To be really precise, there was nothing and then there was “public” for a couple of meetings but there was still a concern about what “residents affected by” meant. But, we are there now.

Contents of tailings storage facility

Tim said: On 11 March 2024 I heard back from Sheryl Roa, Principal Consents Advisor Waikato Regional Council, who wrote back to me on questions we had on the contents of the TSF and risks associated with it. I can read out the answers or we can add them to the minutes of the meeting so we can read them through.

Erich Schmidt said: Add it to the minutes.

Els de Man said: I would like to hear.

Tim said: I will read the questions we had agreed on at previous meetings and the answers from Sheryl (and add them to the minutes).

Our questions from the September 2023 meeting are listed 1 to 9 with the answers in *grey/italics* and any additional comments by Tim or others in brackets at the end of each answer.

Groundwater quality / leachate / content of the tailings storage facility

1. Is testing the leachate from each TSF a reliable way of determining the content of the TSFs?

- *The current testing regime undertaken by the Company is considered to be sufficient to assess the potential effects likely to occur from the TSFs. Collectively the testing regime consists of:*
 - *Proactive measures on-site during operations eg testing of onsite tailings storage areas and liming where necessary;*
 - *Testing of material prior to placement into the TSFs;*
 - *Testing of the pond supernatant;*
 - *Measuring of rainfall;*
 - *Testing of the collection and silt ponds; and*
 - *Leachate testing of the underdrainage.*
- *The data from the testing and associated review of this data by the Company’s technical experts and WRC’s independent peer reviewers collectively gives WRC confidence that the effects from the operations are occurring as per design.*

(Tim’s additional comment = so it seems that Waikato Regional Council (WRC) is not concerned about it for those reasons.)

2. Will it identify all of the content of each TSF including heavy metals such as lead?
 - *The metals for which the Company are required to test for as part of its monitoring regime are:*
 - *Iron, Manganese, Copper, Nickel, Zinc, Silver, Antimony, Arsenic, Selenium, Mercury, Cadmium, Chromium (VI), Lead.*
 - *In addition Cyanide (WAD) is also measured.*
3. Would obtaining a core sample from each TSF be a better mechanism (of testing)?
 - *The design of each TSF is to test and know the chemistry of the material put into each TSF, then to encapsulate the material sufficiently such that there are no known pathways out, and thirdly to have a testing regime that picks up any effects before it reaches any environment where it has the potential to have an adverse effect.*
 - *So, to answer your question No – obtaining a core sample would not in my opinion be a better mechanism and would unlikely be of any benefit as obtaining a core sample is not anticipated to provide any additional information that the existing testing regime does not already manage.*
 - *Also, I note that undertaking a core sample could have some unintended consequences eg opening up a pathway for adverse effects that are currently known to be contained for no real benefit.*
4. What is the content of each TSF?
 - *The TSF consists of encapsulated PAF (potentially acid forming) and NAF (non-acid forming) material from the operations associated with the Waihi site.*
5. Is there any cause for concern regarding the content of the TSF and the toxicity of its contents?
 - *No concerns have been identified to WRC through the data presented nor has the independent geochemistry peer reviewer identified any issues.*
 - *I note that the peer reviewer in their report states “In general, and as previously, management of the tailings storage facilities (TSF2 and 1A) is at best practice level and the monitoring regime is proactive and thorough.”*
 - *I have attached the latest independent peer review for your information.*

(Tim’s additional comment = so there is a peer review that has been undertaken that is accessible if you want to request that from WRC or from Oceana Gold.)

Structural integrity of the tailings storage facility

6. Is there confidence that the TSF structures are robust and safe?
 - *The design philosophy of the TSFs includes knowing and recording the type and volume of the rock used to construct each part of the TSF and using each rock to construct the TSF based on the properties of each rock type used. This design philosophy collectively along with the monitoring of the pore water pressures, benchmark surveys designed to detect movement within the structures, the data collected and data reviews provide WRC with confidence that the TSF structures are monitored appropriately.*
 - *The design and construction of the TSFs are undertaken and monitored by the Company’s staff and consultants which is then peer reviewed by an independent consultant. The Company produces a report that is reviewed by another independent peer reviewer who reports their findings to WRC. The latest independent peer reviewer’s report is due to be supplied shortly but he has advised WRC that there are no concerns with the TSFs.*
 - *So they haven’t got the most up to date report from the peer reviewer yet but the peer reviewer is saying there are no concerns.*

(Tim’s additional comment = again there is a peer review that has been undertaken on the structural integrity of the TSFs and that will be accessible when complete if you want to request that from WRC or from Oceana Gold.)
7. What level of earthquake or issue could cause a structural failure?
 - *I have attached a Waihi Newsletter that details the design parameters which answers this question.*

(Tim note = please contact WRC or Oceana Gold if you want a copy of the peer review.)

Kyle said: It was our newspaper update. We generally cover TSFs annually. That was the 2023 one and there will be another one this year. The short answer is that the TSFs are built to a standard of a 1 in 10,000 year earthquake event.

8. What systems are in place to provide early warning of movement or weakness?
 - *There are some 100+ piezometers placed within the foundations and embankments around the TSFs to measure pore water pressures to assess soil behaviour including shear strength. Additionally there are currently 40+ benchmark surveys designed to pick up any potential movement on the outside shoulder of the embankments. Also the rate of the subsurface drain*

flows is measured. Collectively these are the systems put in place to enable early warning alerts and triggers to assess the design performance.

9. What early warning systems are in place to notify the neighbours of any risk or event?

- *Warning systems associated with natural disasters are the responsibility of Central Government eg GNS and through the Civil Defence process. I understand that the Company provides notification to the police and Civil Defence via their own internal processes. Further detail on these processes would be better directed at the Company.*

Discussion:

Erich said: So, they don't want to test the contents? I will have to go to the Environment Court. If a dam failed, how quickly would people get notified? You talk about central government having systems, do you remember White Island? The government didn't do anything to warn the people. When one (of the TSFs) fail here, you are in deep shit.

Tim said: WRC are saying that they are satisfied that the monitoring systems here are sufficient and that if there was sign of movement it would be up to Oceana Gold to report to the council, Police and Civil Defence.

Erich said: How quickly? If you get a failure in the dam, how long until they notify?

Tim said: Erich, you are predicating there would be a failure without anyone knowing there was going to be a failure. The company are satisfied and WRC are satisfied that there are measurements in place that would indicate that is going to happen before it happens.

Glenis said: Is there a plan in place to notify the public?

Kyle said: Yes, there is. There are a couple of points (that apply):

- It's a "likelihood" and "consequence" kind of discussion. The likelihood is very, very, very low, to the extent that I would say we have engineered it out as best we can. The 1 in 10,000 year design is a 0.01 percent chance. It is not telling us it will happen 10,000 years from now, it is an estimate of the likelihood.
- Sheryl talked about the trigger levels on our monitoring. They are set well below where we believe a failure could occur. Mark's (environmental) team monitors those so if one monitor was to go above a trigger level, that is when the notification process would kick in but there is still a period of time before a failure could occur. I want to reiterate that we don't believe a failure will occur. It has been engineered not to fail.
- Civil Defence and Oceana Gold are building a better relationship about what would happen regarding the physical notification process, but yes, we have an internal plan.

Carolyn McKenna said: Do your warning things rely on the internet?

Mark Burrows said: The water pressure meters are manually read.

Carolyn said: If there's a big shake, do you need the internet to get the alarm? What if the internet is down?

Mark said: We would contact Civil Defence, District Council and Police through telephone or radio.

Leigh Robcke said: Yes, council maintains a radio option.

Katherine Lucas said: If there was a breach, what material would come out? Is it water or something else?

Tim said: There was a question raised about the "what if" (there was an event) and we've been talking about the "what if" for a long time, but WRC is satisfied things are safe.

Kit Wilson said: I see the issue – we look at things like Mount Polley in Canada or the Brazilian tailings dam failure and we therefore think that could happen in Waihi. But we need to understand the difference between a tailings dam and a tailings impoundment. Our tailings impoundment is built out of rock and other material that's come out of the pit if it is structural quality or fill quality, it gets sorted out and goes to the tailings storage facility. A tailings dam, especially the overseas ones, are often built out of tailings. That is like making a donut shape on a beach out of sand which as you know will fail. That is how many overseas dams are built. Here we don't have a tailings dam, we have a tailings impoundment. Inside of the impoundment is basically the stuff

that has come out of the mine which is rock-flour and water. When you talk about a failure, you're thinking about what happens overseas. That won't happen here.

Kyle has mentioned the 1 in 10,000 standard. You regularly drive over bridges which have a 1 in 500 design standard, your children go to schools that have a 1 in 500 design standard, hospitals have, I think, a 1 in 1,000 standard. The tailings storage facilities here are 1 in 10,000. That is where Sheryl's work comes in (WRC). The chances of a catastrophe are so small they are negligible. If something happened that meant the impoundment failed, that would be the least of your worries because the town would be gone.

Tim said: We have had this conversation (about the TSF) a lot. We will put the answers that Sheryl (WRC) gave us into the minutes. If you have further questions, then I invite you to contact WRC or Oceana Gold to get a copy of peer review report so you can read it yourself. I don't want us, in this meeting, to keep speculating on things that might or might not happen that are beyond our technical capabilities. So, I am going to say (if you have more questions) talk to WRC.

Lee Anderson said: We've already got an example. Golden Cross is sliding down the hill. They kept quiet about it and quickly sold the mine.

Kit said: No, I was contracting at that time to Coeur Gold and they didn't keep quiet, they spent \$28.5m to fix that issue and the people who live on Golden Cross Road will tell you how that happened. It was an issue and I see why you would be concerned, but it was fixed. They certainly didn't keep quiet about it as I was the comms guy for Coeur Gold at the time and there was a huge amount of accountability to councils and others concerned. Coeur still owns that site and are bonded to that site until the water quality is such that they can be released from the consent.

Carol Walker said: Are they still pumping up behind the pit there?

Kit said: No, but they are still treating the water that comes out of it.

Lee said: The sludge that is in there, what is its standing angle or co-efficient of friction?

Tim said: That is a good thing to refer to peer reviewers. This is beyond the role of this forum to talk about the engineering and one of the things frustrating me is using this forum to challenge what engineers have decided. Who here is qualified to do that?

Lee said: Asking about the contents of the tailings storage facility and the coefficient of friction are very pertinent questions.

Tim said: Regarding these questions, council have said they are satisfied. If you want to question that then talk more to council and (see the reports from) the peer reviewer.

Dave said: The council are using the information from the mine, by the enemy.

Tim said: We've talked long and hard about what information you need to have confidence in the tailings storage facility. We have provided it from the company and you have said that the company is unreliable because it is in its own interests.

Dave said: I'm saying the mine is relying on information from the mine and I thought that these meetings were supposed to be for the benefit of the host community. If we are not allowed to bring up our concerns, then why hold the meeting? If there wasn't a tailings dam there would not be a problem.

Tim said: We tried really hard to get an answer that satisfied you. Now we are saying that WRC are satisfied and if you ask them to explain why they are satisfied then they will refer to the work that has been done by their peer reviewers who are also qualified engineers.

Erich said: For 3 years we didn't get an answer.

Tim said: We will put Sheryl's answers in the minutes.

Vent shaft air emissions

Mark said: People asked if we could sample the vent shaft from Martha Pit (for silica) and we have had consultants here this week to get samples including a silica analysis which will be sent to Australia and we will present the information for the next meeting.

Glenis said: Yes, and now it is going to be a year since the question was asked before we get the results and that is part of the frustration of people who come to these meetings, that it can take quite a long time to get the answers.

Mark said: The design and scope of the sampling had to be done first. The portal is 5m x 5m and is quite a difficult thing to monitor. Normally air discharge sampling is done from a more restricted opening. We ran the design past the council to see if it is a valid way to measure. That all takes time. With the processing of samples in Australia we expect it will take about 4 weeks to get the results.

Glenis said: If the resource consent comes out then those results are not going to be available in time if it takes a year to get an answer on something like air quality. The previous stuff we've seen about air quality was 2014 and that's a long time ago.

Dave said: There is some important stuff that is being considered coming up.

Tim said: Is that in relation to the consent that is being sought going forward?

Kyle said: The specific monitoring you asked for was last done in 2014 but there has been air quality monitoring happening all the time that we have presented. It was just that specific point.

Mark said: Of the vent itself.

Tim said: Addressing Glenis' issue, when will the company receive a report?

Mark said: A couple of months maybe, by the time they process it all and run it through the system and I thought the next meeting would be the ideal opportunity to present the information.

Erich said: My question for you Mark is which time was the sample taken?

Mark said: Before, during and after blasting so we get a spread over the ...

Erich said: Before, during and after ... how long after?

Mark said: Not too sure actually but I can find out for you. It is the generally approved way of sampling. They put it in one morning and came back the next day with the equipment so not sure how long it ran for but it was for hours.

Post-meeting answer:

Sampling occurred from 13:00 (12 March) to 10:00 (13 March). Further details to follow as to the activities that were taking place at this time, once the report is received.

Glenis said: Was the vent operational during all those tests?

Mark said: Yes, it was. This was not Trio, it is the vent in Martha which is the only one running at the moment.

Carolyn said: Can we not wait until the next meeting? Can you release to the public? Could you put it on your Facebook?

Kyle said: Sure thing, give us your email and we'll email it to you. I will talk to Mark about whether it would work to post it on our Facebook page. We will get back to you about that.

Post-meeting answer:

When the report is ready, Oceana Gold will include a summary of the findings in one of its HC Post Updates together with a link to the report.

Tim said: Has everyone made sure they have put their email and contact details on the sign-in sheet so that if the decision is that it needs to be sent to people directly then we have your contact details to do so?

Community survey

Kyle said: The next follow-up question was about the community survey. Josh covered it off and talked to Phoenix Research, specifically David Fougere (Managing Director) and asked who Phoenix surveys. He said we endeavour to get 300 respondents in Waihi and environs (Waihi township, Waihi Beach, Athenree and Whangamata).

Tim said: For those that were not at the last meeting that is about the Social Impact Management Plan (SIMP).

Kyle said: Yes, they are inputs to Oceana Gold so we have an understanding of what people's perceptions are of what we are doing and also it provides direct inputs into the SIMP. It asks quite broad questions such as the advantages and disadvantages of mining and it asks whether people are strongly opposed to the mine, strongly supportive of the mine or are on a scale somewhere in between.

Glenis said: With the SIMP, I looked at how many properties Oceana Gold actually own and I could only find a percentage that it had data about how many of their staff own houses, how many rent, but no real data that I could find about how many properties Oceana Gold actually owns and how many are rented to give an idea of the effect that might have to the rental and housing market if houses were moved due to mine layback. Given the OIO approval of up to 75ha, I wanted to know how many extra houses have been bought by Oceana Gold and how that will affect our housing and rental market.

Kyle said: It does report the number of properties we own (as Josh presented at the last meeting). There are 137 that we own, 49 rented to employees, 74 rented to the public and 14 are short-term stays used for relocating our short-term contractors. As of 2022, 84 of our employees and 27 of our contractors owned homes in Waihi according to our data set. That is in SIMP. I will give you the page number.

Post-meeting answer:

- *Oceana Gold Waihi property ownership and rental data is reported in our SIMP biennial monitoring report, from page 72 onwards.*
- *https://www.waihigold.co.nz/uploads/documents/reports-and-plans/Waihi-Social-Impact-Management-Plan-2021-2022-Monitoring-Report.pdf?_cchid=cbb6e354728e8dfdfbaf483da8790b7*

Jane Murray said: I was reading a few years ago that the mining company had 400ha that they were utilising including facilities at Union Hill. How many hectares have you got today? Has it expanded?

Kyle said: I don't know the answer. I will give you that area in the minutes if I can find it.

Post-meeting answer:

1022ha (in total) but 280ha has mine use eg the mill, TSFs, pit, core sheds and Moresby Avenue (excludes residential as use).

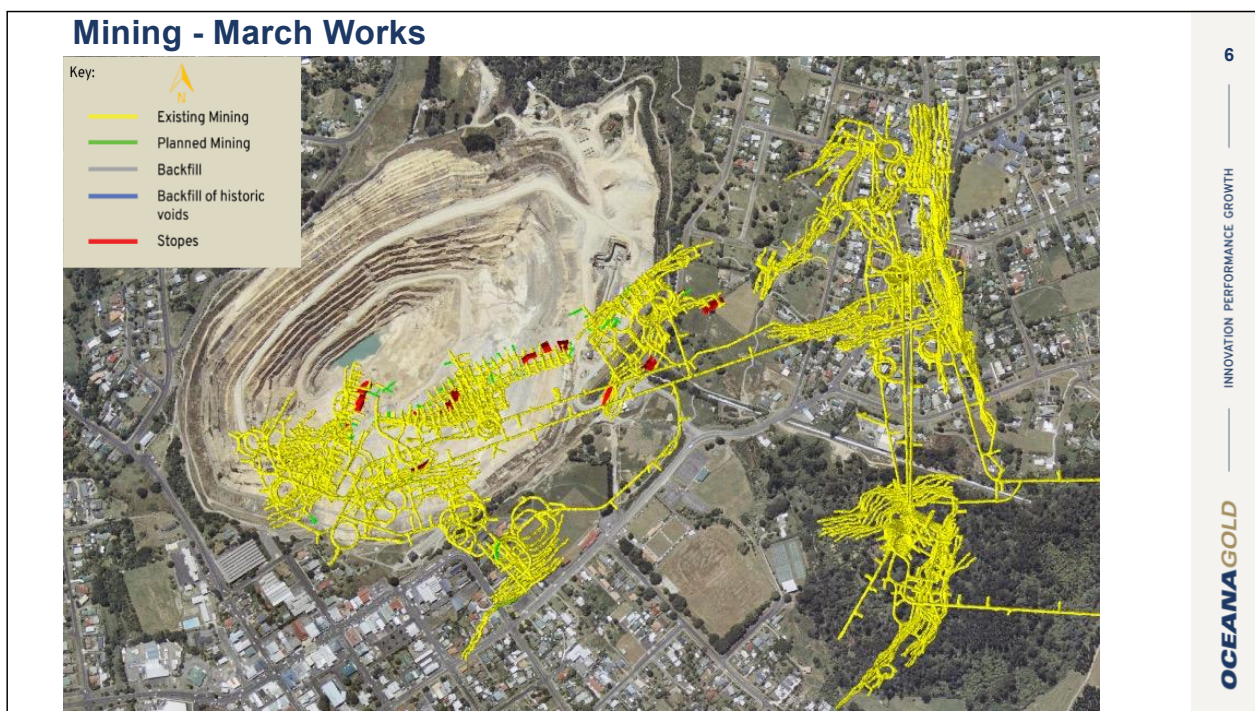
Jane said: It's just interesting as you're buying properties and you're getting wider and wider.

Kyle said: The consent conditions require us to buy properties under Correnso and Project Martha. It is actually really hard for us to buy property but yes, we are still buying them under those consent conditions. The conditions say that 3 months prior to stopping under a property, that means physically doing a stope blast, we have to offer to purchase the property or give the owners a 5% ex gratia payment.

Apology for non-attendance from Oceana Gold GM Justin Johns

Kyle said: Justin Johns is our GM and there have been lots of questions about when (you) get to meet him. We had intended for him to come along to this meeting but he has been rushed off to Brisbane. Justin gives his apologies and has offered himself for a "meet and greet" at the project information office. We will communicate the details later and he will be at the next meeting.

Mining update



Patrick Slagter (Technical Services Superintendent Oceana Gold) said: This is our update on mining progress (for March). For those who aren't familiar with the layout of the underground in this area (pointing to the slide above) we have the Trio operation which was mined post-2010 through to 2013, Correnso (pointing again to the Correnso area on the slide) mined 2014, 2015 to 2019, some upper level stuff around 2020 but it's complete now and really just has a backfilling stage to go.

Our main area of focus now is five areas divided up by vein names of those areas. Some work down here in the Rex ore body, some work in and around Empire, also Royal East which is offset to Empire but accessed through the same decline travel-way, west of Empire we have a lot of activity and then we have the Edward Lode over this side and quite a bit of activity planned in and around that area as well. Previously we had activity in Royal, a vein that stretches between west to the east, we're mining the eastern side of it near Empire, this is pretty much exhausted so just closure stuff we need to do and that area will be pretty much finished unless we manage to prove up some additional resources and need to access it from that area.

Brian Gentil said: (Looking at the key on the map) I can see yellow, green, no blue, I can see grey streets but can you point out some grey "backfill"?

Patrick said: In the sequence of mining, we mine levels, we develop declines, we access the declines and we drive along the ore body or we will access the ore body through transverse drives depending on how wide it is and whether or not we're developing in and around the historic stopes which is a lot of the material in here associated with Empire and some associated with the historic Edward stopes. When we complete those stopes which are in this case marked by red, we will then fill the void between those. Between each level we take out a block of ore and each of those we define as a stope, then we backfill those. Is the backfill shown on the plan here? No, it is not shown on the plan, it would show as a complete set of historical stopes or shapes that have got voids in them and they would then be coloured grey.

Andrew Wharry said: So, is all that yellow still open?

Patrick said: There is a fair degree of it that is open because we are still active. There is also material that we have extracted from it and we have backfilled within the last 3 years of operation in Project Martha. Within Correnso, the stoping has been completed and all of the stoping levels have been filled now and we are doing some remedial backfill of the access drives.

Andrew said: So, are all of those yellow bits drives? Is that still open?

Patrick said: That's drives correct, (it is open) except for when we have finished and filled. When we take out a mineable block of ore between levels, we will actually take out the level itself so that will disappear. There is

access because we still access through Favona portal, we come down through Trio, into Correnso and then use these access drives in order to get across into Martha because we don't have access down the Martha ramp because of the failure in 2015.

Brian said: So, just to clarify, the grey shown at the bottom of Martha mine is not backfill?

Patrick said: No, it is a pond of water.

Jane said: With the mining underground under the open pit, why do you need to expand the open pit? Why not keep it underground? And going in the sides like you are, why do you have to make the pit bigger?

Patrick said: There is still mineable material in the walls of the pit, areas we can't access from underground because of the stand-off distance we have to the pit. So, it is an opportunity to go and fully extract that material.

Jane said: So, you want to get every last bit?

Patrick said: Yes, we certainly should optimise the ore body if there are resources there.

Jane said: What happens if there's a slip on the Stirling side like there was on the other side?

Patrick said: Then there are consent conditions which require us to remediate that slip.

Jane said: When you expand, you're going closer to a main street. What happens if there's a slip on the main road side? People could be killed.

Kyle said: We will talk about the Martha Mineral Zone (MMZ) at end of the meeting. We are seeking approval to extend the MMZ as it is defined within the District Plan. That is just step 1 for Oceana Gold around our decision-making (about whether and how to proceed) about an expanded Martha Pit. There are still lots of investigations that would be required to determine what the final shell of the pit would look like, where it goes, what the geotech assessments say, what effect it would have on the air quality and noise and what decisions will be made. We haven't got there yet, we don't know the answers yet, the studies are still to be done.

Jane said: Shouldn't you do the studies first before you apply for the minerals?

Tim said: Is the request to extend the MMZ but not a licence for Oceana licence to mine? Is that right?

Kyle said: The request is to expand the MMZ to include properties that Oceana Gold owns. There has been an indicative pit shell identified to apply some sort of assessment to that including our understanding of where the ore body is, the properties we own so that is where can we put our footprint, ensuring that we can do a pit with appropriate pit slope to ensure stability. That's about the extent of the "thumb-suck" that went into the picture along with a bunch of studies to determine the appropriateness of extending the pit. A further resource consent, with an approvals process, would need to be sought after that with additional studies around noise, social impacts and air quality with geotech to be fleshed out further.

Jane said: Have you thought about how it affects the value of the residential Waihi people, not the mining staff?

Kyle said: Yes, the company's current priority is the Waihi North project. The extended Martha Pit was considered, as part of Quattro in 2020, and those plans are still out there for people to look at showing this is what we would like to do but we still have to figure out how we would do it.

Tim said: Is this the first step of a multi-step process? Would there need to be a resource consent applied for if Oceana wants to mine in the areas that Jane is concerned about? When that resource consent is applied for, would that be an opportunity for Jane to express her concerns?

Kyle said: With all of the concerns that Jane is expressing, to go deeper we've got to go wider and to go wider we have to extend the MMZ. That is step 1. The company might make a decision later, once they've done the studies, that it's not viable and they might just do the North Wall layback.

Erich said: I'm not happy with this answer. Last time and the time before there was a question raised here about the retaining wall at the back of the Salvation Army and the explanation in minutes is that Oceana bought the property and that is what was misleading the last time.

Kyle said: That is correct, we did buy the property. If we could pull the minutes out, we could read it out verbatim but yes, the bank behind the Salvation Army is now Oceana Gold owned. We needed that for the MMZ.

Dave said: You never mentioned it before. The last time that question was brought up you took two steps forward rather violently towards Brian and said, "What are your concerns?", then at the next meeting you told us you bought the bloody thing.

Tim said: It is in the minutes from the last meeting.

Dave said: It must have been the meeting before when Kyle was here, he wasn't at the last meeting. He stepped towards Brian and said, "What are your concerns?" as if he was a schoolboy.

Tim said: Was that your experience Brian?

Brian said: He did approach me, he did ask me that and step towards me and it was a bit like I was a school child and I said I was interested and that is why I asked because of my interest.

Kyle said: The questions were around the retaining wall and if you pull the minutes out it was part of the arrangement around us getting approval to purchase the bank behind the Salvation Army.

Dave said: You never said that.

Erich said: Read the minutes. Page 28.

Tim said: Which minutes are those, Erich? The minutes of the previous meeting at page 24?

Erich said: No, the meeting before when Kyle was here.

Tim said: Why are we talking about something that was ? There was a post-meeting answer that was provided to us that we published in the minutes that said (let me read this out now that you have raised it). This is what Oceana said 6 months ago when the question was raised:

Post-meeting answer:

Oceana Gold purchased a piece of land from the Salvation Army. This piece of land may be required if there is a future expansion of the Martha Pit. In the land acquisition negotiations, it was agreed that Oceana Gold would support the Salvation Army in obtaining resource consent for a retaining wall that facilitates the extension to their building..... (interrupted)

Erich said: From 1 year ago.

Dave said: I am talking about a year ago when Kyle was here.

Tim said: Clarify for me now what the problem is.

Dave said: When he told us that they purchased that land he never mentioned that.

Glenis said: We asked about it (two meetings ago) because we noticed how much earthworks there was and the huge piles that were going into the ground. Nothing had been mentioned about it, but it kind of looked like it was shoring up a potential layback of the mine. That is why we asked about it.

Tim said: I don't have the minutes from two meetings ago with me.

Erich said: I do (have the meetings minutes).

Tim said: What does it say that Oceana said at that time?

Erich said: They lied. I hate liars.

[Multiple interruptions and multiple people talking.]

Lyn Randell said: You need to speak one at a time or nothing is going to get resolved and that poor lady cannot hear who is saying what so nothing will be in the minutes.

Tim read post-meeting answer from March 2023 minutes:

Post-meeting answer:

- *Oceana Gold purchased the piece of land highlighted below from the Salvation Army.*
- *The Salvation Army is constructing a retaining wall on the boundary to provide extra space at the rear of its building (to allow for parking/the construction of a food-bank).*
- *The Salvation Army is responsible for the consenting of the structure, its construction and paying for its installation. It is our understanding that the funds Ocean Gold provided in the property purchase are being utilised by the Salvation Army for that purpose.*

Tim said: Then you asked us again at the last meeting (the September 2023 meeting) and we got a post-meeting answer from Oceana Gold which is what I read out just before. Erich, I don't see the lie. Where did Oceana Gold lie?

Erich said: They were saying we don't have anything to do with retaining wall. That was what they said.

Tim said: Do you agree that the last (September 2023) meeting minutes is an accurate account of the situation?

Erich said: Yes, they are (accurate). They lied earlier.

Dave said: That is post-meeting minutes, in the meeting they did not say anything.

Erich said: Anything.

Tim said: What do you suggest we do about it?

Dave said: Nothing, I am just pointing out that sometimes they tell a load of don't trowel it onto us. That is the whole reason I am at these meetings. I am not anti-mining – I am anti-bullshit.

Carolyn said: Patrick, how much will be backfilled? When it's all finished will we be left with any holes in the ground?

Patrick said: We have to fill to consent conditions so we do an analysis of the probability of failure and propagation of the openings and we stabilise those openings so there are no openings that have a probability of making surface expression. We don't fill openings that have no probability of surface expression.

Brian said: Some would be filled with water tables naturally?

Pat said: Eventually that would be the case, we have drawn the water table down, eventually they would refill.

Glenis said: When you mentioned before how for any future work there will have to be a resource consent, I think it needs to be said that I've read two media releases in the last few days from Oceana Gold Corporate where they say they're excited about the Fast Track Bill, which will allow them to be able to move forward with the Waihi North project and the Wharekirauponga (WKP) project without the same sort of (consent process) conditions they would have had. Realistically there is possibly some concern that locals won't get input into a resource consent process and submit if this goes through that fast-track process. Shane Jones keeps saying he loves mining and there is concern that we may not be able to submit on any future consent.

Katherine said: Do you need any of the waste from the Martha Pit to construct TSF3? I was thinking of potential reasons why you were applying for the expansion of the MMZ.

Kyle said: We need Gladstone Open Pit and we potentially need the North Wall layback to build TSF3. TSF designs are engineered to allow for another lift should we want to come back and apply for that, to accommodate an expanded Martha Pit. We are seeking approvals to one height, but it is engineered so that if we want to come back and seek approvals for another height we can do that, that is RL 153.

Brian said: Where is TSF3?

Kyle (pointed to the map and) said: TSF3 is adjacent and butted into the existing TSFs on the right-hand side.

Katherine said: Potentially you could need the material, the waste, from here to do TSF3 but not necessarily mine in there?

Kyle said: It is a material balance scenario. My understanding is that Gladstone Open Pit builds TSF3 and we could potentially use some rock from the North Wall if we need to.

Kathy said: In the letter we received from council, that says your proposal that's about to be considered by council, where I live it is not where your red lined or shaded red area is in the papers that you sent us. But, it says that my property may be rezoned. Why? What potential effects are there? *(Addressed later in meeting.)*

Andrew said: The Rex ore body was consented to 110 below the surface. What is it now?

Patrick said: It is about 120 at the moment so we're still mining up to the original 110 level and we have approval to mine up beyond the 110. We are allowed about another 30m of development above that.

Andrew said: The top of the mine could be 80m below the ground? Originally it was 110m consented?

Patrick said: Correct.

Andrew said: Can the original consents be altered down the track?

Leigh said: I didn't bring the consent with me but there was a provision within the conditions (of the original consent) that if council agreed there could be a further lift. So, Oceana did approach the council about that and we got advice from our geotech engineer. He requested some extra monitoring but basically he is happy enough with the controls in place for that to happen safely.

Andrew said: Could I get a copy of that consent?

Leigh said: It is online, I will send you a link and I can send it to Tim to put in the minutes.

Links to the Project Martha resource consents (HDC, WRC and common conditions [conditions common between HDC and WRC]) are below:

[Project-Martha-Land-Use-Consent-conditions.pdf \(hauraki-dc.govt.nz\)](#)

[Project-Martha-Conditions-for-WRC-consents.pdf \(hauraki-dc.govt.nz\)](#)

[Project-Martha-Sch1-Common-Conditions-HDC-WRC-Sep2019.pdf \(hauraki-dc.govt.nz\)](#)

Erich said: I know the consent was originally for 110. You are already blasting at 100, correct?

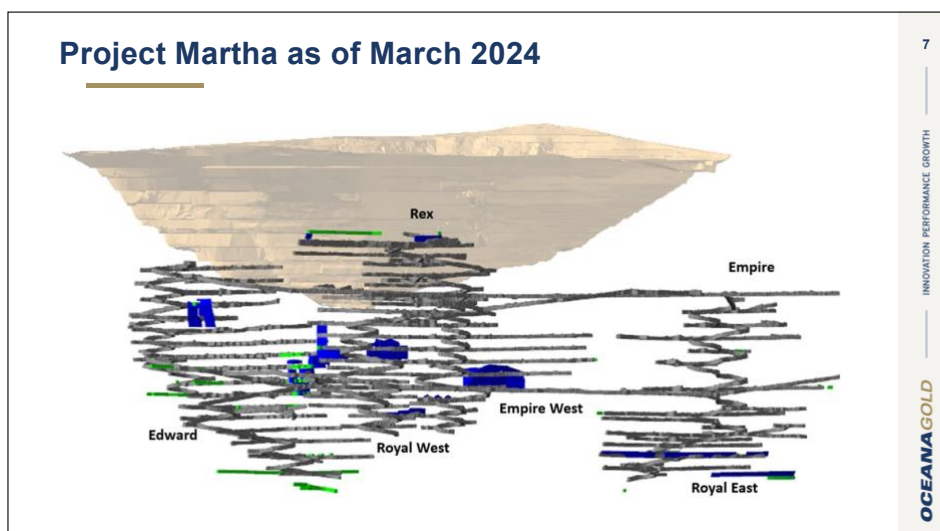
Patrick said: We are at about 120 at the moment.

Erich said: Look in your blast minutes, it's written 100 and 120 you are blasting for 3 or 4 days now.

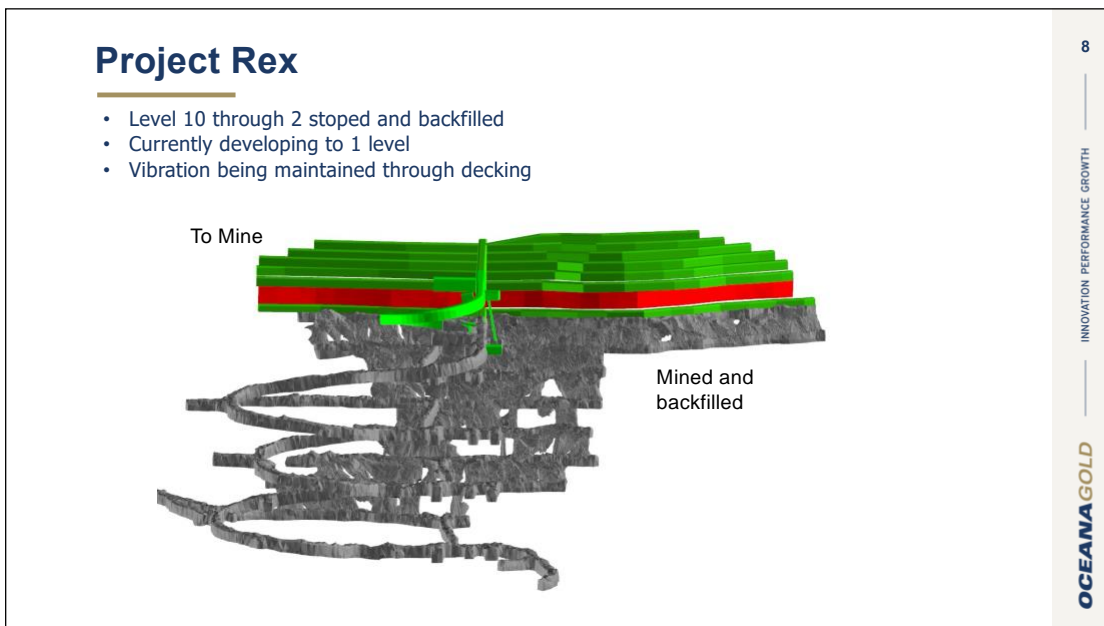
Patrick said: We are still mining within the original mine plan. We haven't yet extended up to the additional lift which we had planned; we are on our way there which I have got a slide on.

Erich said: There is 100 written on the website.

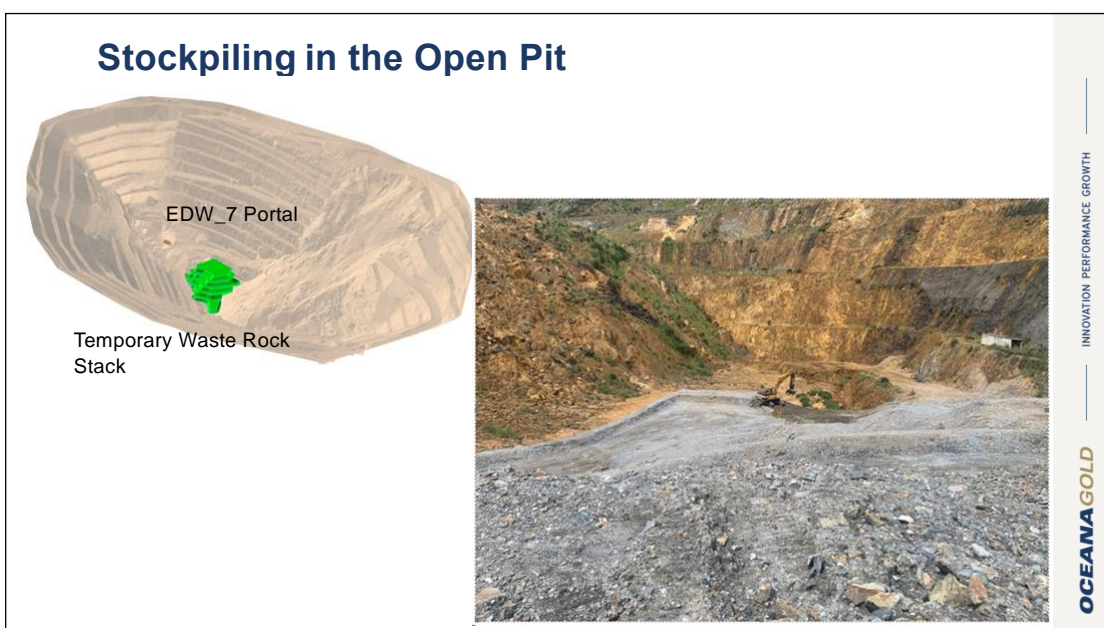
Jeannine Wiki said: That's correct, we have put it up there with the blast times.



Patrick said: See this cross-section, these are our areas of mining. Rex is our focus at the present time. At Edward we are spread between some other level activity and some central ore body as we are developing the decline as well. Royal West is complete for us and we have no plan to do additional work unless we find some additional resource in there as well. We can access that from Edward decline as well. A lot of focus for us this year is within this area which is Empire West. Within Empire itself, there is not a lot of activity scheduled within Empire but we are still mining the eastern end of the Royal vein which we access off the Empire.



Patrick said: This is the Rex ore body in section. In the grey here we have completed stoping through those areas at successive levels taking lifts going upwards. The white areas shown here are just pillars (in situ pillars) that we have left and the grey material is what we have removed and backfilled. As part of that approval in the condition, we are going to incline for (nominally) another 20m vertically. Then we will drive along the ore body stoping out the (red) material. We have a slightly altered method up here where we will flatback the areas up here working along our drive and just drill and blast using our development equipment. We will work along there progressively until that whole ore body is removed and the area filled.

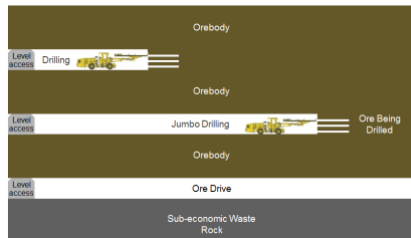


Patrick said: This is a bit of a photograph update. In November we commenced a temporary waste rock stockpile in the open pit. We access that through our fresh air intake in the bottom of the pit. This is a photo showing the progress that we have made and we will progressively bring that up and then over time begin to draw that back down and use that material (to backfill) underground.

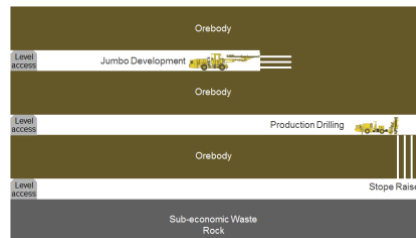
[Patrick briefly summarised the Modified Avoca technique that has been covered in full in previous meeting minutes.]

Modified Avoca Technique

1 Drill drive access



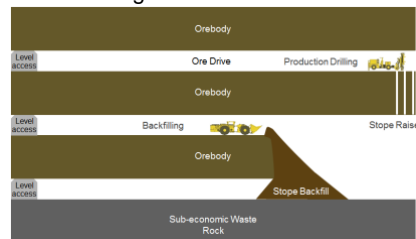
2 Production drilling



3 Production blasting & bogging



4 Backfilling



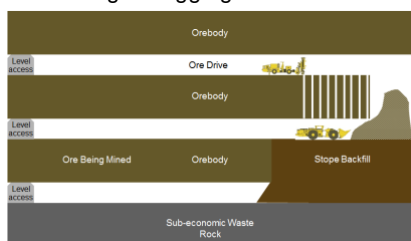
10

INNOVATION PERFORMANCE GROWTH

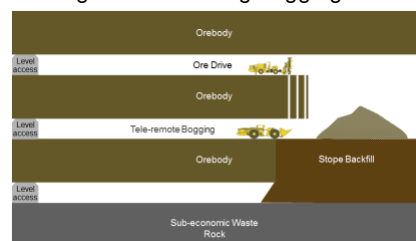
OCEANA GOLD

Modified Avoca Technique

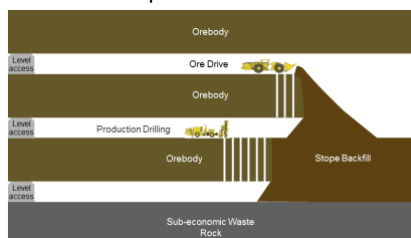
5 Blasting & bogging over backfill



6 Progressive blasting/bogging



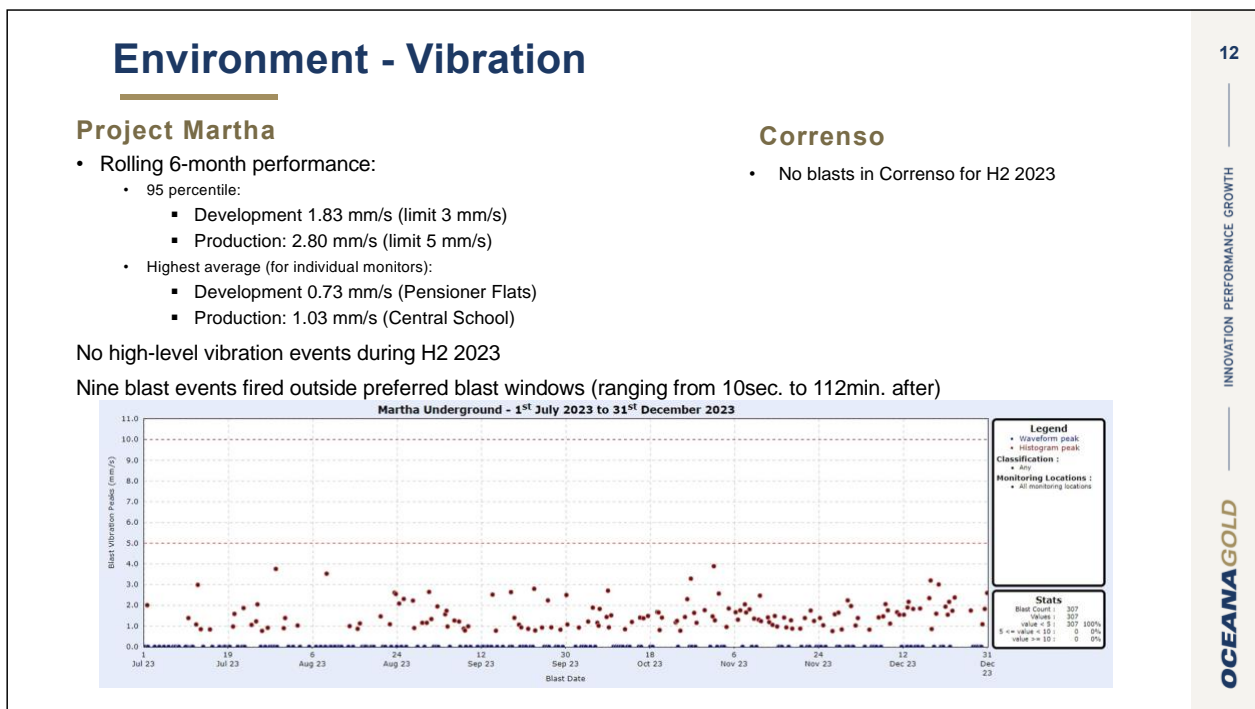
7 Multi-level production/backfill



11

INNOVATION PERFORMANCE GROWTH

OCEANA GOLD



Vibration

Mark (Environmental Superintendent Oceana Gold) said: This is the data for the last 6 months, as in the second half (H2) 2023 from July to December of last year. Project Martha is the only place we are doing underground blasting. Correnso had no blasts during that period, so it is all about Martha Underground. As you can see, we have been compliant with our requirements with development blasting at 1.8 when the limit is 3 and production blasting at 2.8 when the limit is 5. We've also got other conditions about the highest average at individual monitors with development at 0.73 and production at 1.03. During that period, we didn't have any high-level blasts (high level is anything above 5). The dots down there (below the line) are the blasts conducted during that period. We have preferred blasting times of 7am to 8am, 1.30pm to 2.30pm and 7pm to 8pm. We try to blast during those times but during this H2 period we had 9 outside those windows with some just outside (as in) 10 secs and some up to 2 hours outside of the preferred blasting windows. H2 2023 was pretty good.

Mike Hayden said: That 2 hours is quite a long time outside that window. What was cause of that delay?

Mark said: There are a lot of changing conditions for underground – water, damp. Patrick, I don't suppose you remember what caused the delay of 112 minutes?

Patrick said: No, my memory does not serve me that long. There's a bunch of reasons. A lot of those overrun duration ones will be production shots and they can come about for a number of reasons such as the condition of the holes, during the charging (process) we may come across holes that are blocked and we may need to work them open so we can charge them fully and blast safely.

Mike said: So, safety is a major contribution?

Patrick said: Absolutely.

Glenis said: When it says 9 blast events outside preferred blast windows, is that within consent conditions?

Mark said: Yes, we aim for those windows because that is when people are expecting us to blast but sometimes things happen that mean we are outside of those windows.

Brian said: What are your preferred blast windows?

Mark said: 7am to 8am, 1.30 to 2.30pm and 7pm to 8pm.

Brian said: Monday to Sunday?

Mark said: Not Sundays.

Brian said: Has it always been 1.30pm to 2.30pm? When did it change?

Mark said: Previously it has been 1pm to 2pm but they have their lunch at 1pm and we don't want people in the underground when we are blasting.

Leigh said: It changed at Project Martha.

Brian said: This information is July to December 2023. Is there information for January and February 2024?

Mark said: We work in quarters and we are still in Q1 at the moment. A lot of data is in quarters or halves and because we are still in March we have not got all of the Q1 data yet.

Jane said: With your vibration meters, they are on concrete pads aren't they?

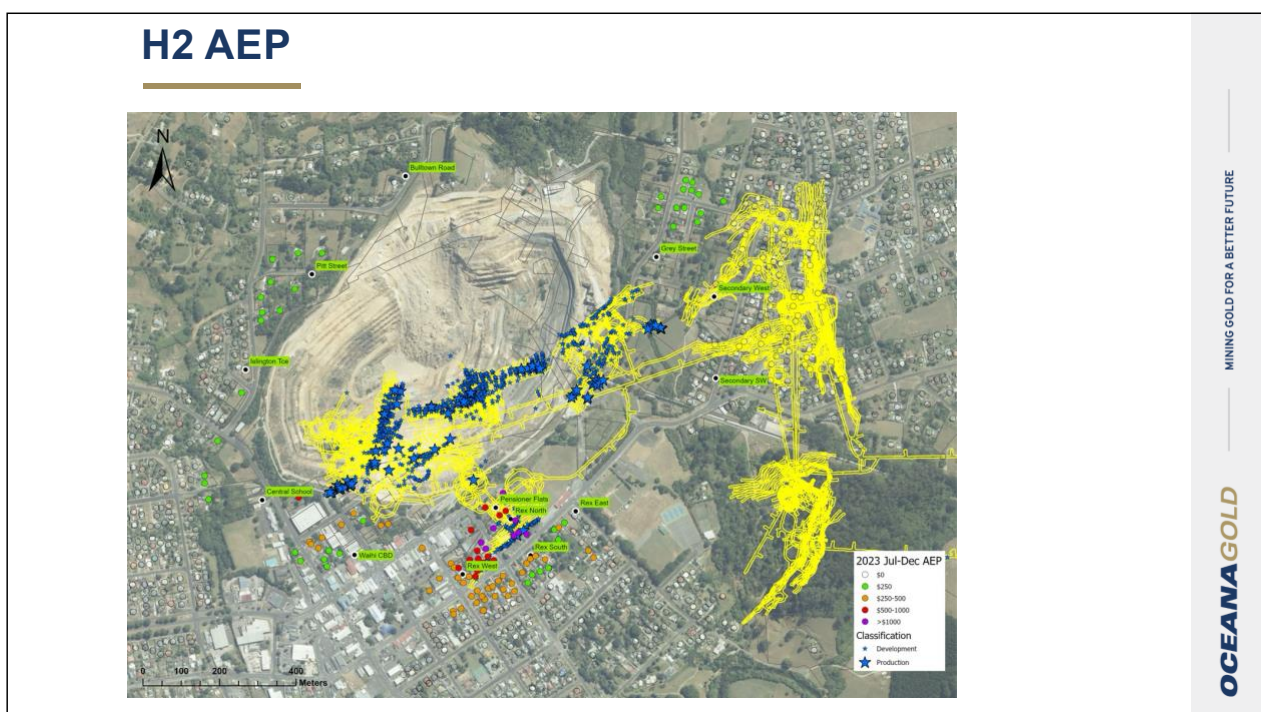
Mark said: Yes, small blocks 250mm x 250mm.

Jane said: If they are on a concrete pad, like houses, would that have a less impact on a house on wooden piles feeling that vibration? Why is it sitting on a concrete block?

Mark said: That would depend on the type of construction – if you had a house on stilts maybe you would feel it more. Our requirement is to measure the actual vibration in the ground. That is the design standard (on those blocks and) not 300mm or 400mm but 250mm x 250mm and 250mm deep.

Jane said: I am just pointing out that it might measure something on your concrete but someone on piles could feel it more.

Mark said: Yes, it could be different.



Mark said: The blue stars show where we have made AEP payments.

Brian said: Can you please explain for the newbies here what AEP is?

Mark said: Amenity Effects Programme. We have a consent condition based on the level of blasting that the company does that can determine payments that we make to people in the community for affecting their amenity. It all depends on where the residents are located in relation to the blast, the depth of the blast and the size of the blast.

Jeannine said: Two blasts in one month that exceed the 1.5mm/second limit trigger the AEP and the payment.

Mark said: Around the Rex area you can see there have been quite a few payments where we are blasting near or underneath people's homes.

AEP Payments

For the July – December 2023 payment period, 122 properties qualified for an AEP payment.

These payments totalled \$55,545.35

All properties qualifying were in the Project Martha area.

Since 2007 there have been 9,098 payments made, totalling \$5,829,790.71

13

INNOVATION PERFORMANCE GROWTH

OCEANA GOLD

Mark said: This shows the payment total for the period.

Glenis said: With the mine layback and future work that is going to happen basically in the CBD, is there anything planned for commercial buildings? You've got AEP payments for around the pit area but only for residential. What about commercial?

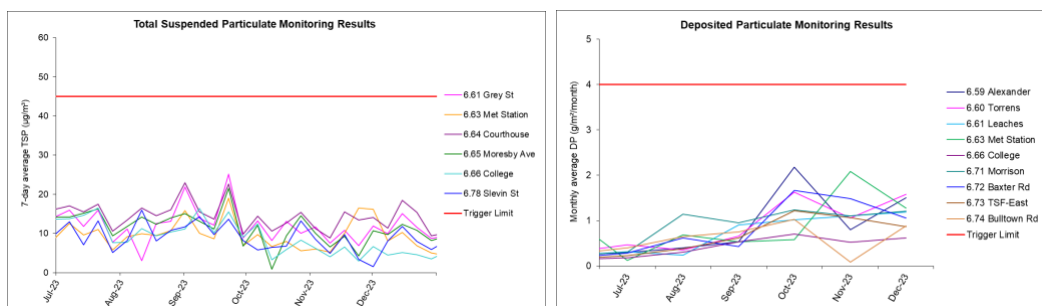
Mark said: Currently it is only residential.

Jeannine said: Unless they are living in their commercial property.

Kyle said: There is nothing specifically proposed now.

Air Quality Results

H2 2023



	Total suspended particulate	Deposited particulate
Sample period	7-day average	30-day average
Unit of measure	µg/m³	g/m²/month
OGNZL trigger level	45	4

INNOVATION PERFORMANCE GROWTH

OCEANA GOLD

Air quality

Mark said: This is H2 last year. The compliance limits are shown up here (red line). The left-hand graph is the suspended solids, the stuff you might breathe in. The right-hand graph is the dust deposited that you might see settle on surfaces. You can see that we've been within limits with a slight increase during Q4. I think that might be due to it being springtime with more pollen and people doing activities like hay-making.

Brian said: Are there no monitors in the centre of town?

Mark said: Yes, all around the pit.

Brian said: So, they are not registered on there? (See the list on the slide.)

Donna Fisher said: The courthouse is CBD.

Mark said: Courthouse is just for suspended dust. The suspended solids monitors are all around Martha Pit.

Brian said: Just on the outskirts of the CBD, and Moresby Ave, this end or school end?

Donna said: Central.

Brian said: Nothing up Seddon Street where there is potential, and it would be good to get a reading now where you will get a zero reading to compare to readings if the layback goes ahead?

Mark said: No, it won't be a zero reading, there will be diesel particulate and all sorts ... these monitors measure everything.

Andrew said: Why isn't there a monitoring station in the middle of the CBD?

Mark said: I don't know why there isn't one there – in the old days was there one there?

Donna said: I think the courthouse is the only one.

Andrew said: Do you have any problems with putting a monitor in a public space and being tampered with?

Mark said: We could put a cage around it or something. These are all the locations that were agreed on with the regulator WRC and we have never had any advice that they are in incorrect locations or anything like that.

Brian said: That was for the mining operations back then?

Mark said: Yes, then and now but we can tweak the network; we would just need permission from the regulator.

Donna said: These are all the monitors that were operating when the pit was operating.

Tim said: Is that a request then? Are you asking that Oceana consider putting something in the CBD?

Brian said: It would be great to have something now, as a comparison to the future, top, middle and bottom.

Mark said: That might be a condition that is implemented.

Brian said: All these (stations listed) were they a condition, or did you choose to put some of those in?

Mark said: Determined through our management plans.

Andrew said: The pit is still in operation; you are stockpiling down the bottom.

Tim said: Two suggestions, one is putting monitors in place now and one to make monitoring part of the consent conditions if the consent is granted.

Multiple voices: Do it now so you get a comparison, it would be helpful to everyone.

Post-meeting answer:

Mark to consider and respond as Environmental Superintendent.

Water Quality Results

Surface Water Quality H2 2023:

- 129 surface water samples taken
- Low pH – 8 results slightly below trigger – not mining related

Table 2: Receiving Water Quality Standards

Parameter (g/m ³ unless stated)	Receiving Water Concentration ⁽²⁾	
	Hardness 20 g/m ³ CaCO ₃	Hardness 100 g/m ³ CaCO ₃
pH	6.5 to 9.0	6.5 to 9.0
Cyanide (CN _{iso}) ⁽¹⁾	0.093	0.093
Iron	1.0	1.0
Manganese	2.0	2.0
Copper	0.003	0.011
Nickel	0.040	0.160
Zinc	0.027	0.100
Silver ⁽¹⁾	0.00025	0.00284
Total Ammonia	Refer Table 3	Refer Table 3
Antimony	0.030	0.030
Arsenic	0.190	0.190
Selenium	0.006- Refer Note (4)	0.006- Refer Note (4)
Mercury	0.000012	0.000012
Cadmium	0.0003	0.001
Chromium (VI)	0.010	0.010
Lead	0.0004	0.0025



Freshwater Biomonitoring:

- Two surveys each year conducted by consultants
- Two reports generated and sent to WRC and independently reviewed
- 2023 summary:

“OGNZL was compliant with conditions of its Permit, which authorises the discharge of treated mine water to the Ohinemuri River.”



INNOVATION PERFORMANCE GROWTH

OCEANA GOLD

Water quality

Mark said: We do a lot of water sampling. With the streams, primarily because we have a water treatment plant, we discharge at two locations into the Ohinemuri River and we take a lot of river samples weekly and monthly. Those orange dots (on the slide) are some of our river sample sites. During H2 we took 129 surface water samples around Waihi and got 8 results slightly below our trigger levels. In a mining related situation this can happen after rainfall. One of the low pH readings came from one of our control sites upstream. We did not have anything out of compliance for all of these other things we analyse for. We analyse for all of these metals and things in the river and suspended solids as well. All of that information goes into quarterly water reports that go into the council. Then twice a year we have biomonitoring assessments conducted in streams and they test different things within the waterways – plants, sediments, fish. We get consultants to do that and that also gets submitted to council who get their own independent person to review those reports. We had no issues. On the slide is a comment from the consultant's report that we were compliant with the conditions of our permit.

Carolyn said: Are those things on the list things you have been putting into the water? Or, if there was no mining, would the water still have those things in it?

Mark said: These aren't results, these are the limits. Our consent requires us to test for all these things. It doesn't mean we have them in our water.

Katherine said: What is the pH when you discharge the water into the river?

Mark said: The pH of the treated water is an upper limit of up to 9.5pH. We can't go beyond that.

Mike said: Are those parameters for the river as it is naturally or after treated water has gone into it?

Mark said: Those are our compliance limits. The intention is for that to be the level after we've put water in there but we also use the same parameters for our analysis upstream. Sometimes you can get something naturally occurring upstream that is not mine related. That happens sometimes – you get a strange result up here by HDC's water take.

Dave said: So those are your maximums that you are allowed. Where are your results?

Mark said: I can give you the results – there are 129 of them. You are welcome to them.

Dave said: Yes, I would like the water results.

Post-meeting answer:

These results will be made available to Dave by OceanaGold and can be provided to others on request should they wish to receive them.

Mark said: So the summary is that we had 8 low pH's over 6 months after the rainfall.

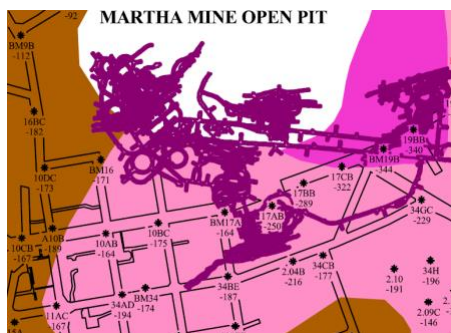
Brian said: And nothing from the other limits in the list came up at all?

Jane said: Why does the water taste horrible?

Mark said: That is upstream of us so we have no impact on that.

Dewatering & Settlement

- Overall, groundwater levels have decreased due to less rainfall (1930mm in H1 cf. 967 mm in H2 2023).
- Waihi township piezometers have been stable
- Settlement monitoring – Nov 2023 settlement survey no new tilts.



MINING GOLD FOR A BETTER FUTURE

OCEANA GOLD

Dewatering and settlement

Mark said: To mine you have to dewater and so we have to monitor that there are no effects on the surface around Waihi. Overall, the ground water levels have decreased because we had less rainfall. In the first half of the year we had almost 2m of rain so water levels came up, but in the second half we had just under 1m of rain so we have dropped back down to normal levels. There are piezometers all around town which measure every month. There are triggers that tell us if there are any changes in groundwater levels but there has been no movement in those. Also, there is the survey every 6 months of the settlement pins. November was the most recent survey and we haven't had any significant movement on our settlement either.

Brian said: The piezometer testing once a month, is that automatic or manual?

Mark said: It is a real mixture of things. Some of the older ones are like a tape measure that we unwind down the hole and measure what the water level is, there are other ones that we plug a computer into and download and other ones that actually send messages back through a modem on the wifi.

Community - Notification of Blasts

The latest blast times and locations are available daily on our website: www.waihigold.co.nz

Production blasting is scheduled between 1.30 – 2.30pm (note: a blast may occasionally be delayed under specific circumstances).

Underground Development blasts may still occur, and due to their small size, will not be notified. These are smaller than production blasts and will occur between:

7.00am – 8.00am
7.00pm – 8.00pm
1.30pm – 2.30pm

Please contact us on 0800 924 444 if you would like to receive text or email notifications.

In-home blast notification devices can also be provided to residents.

18

INNOVATION PERFORMANCE GROWTH

OCEANA GOLD

Donna said: We notify people in the community who want to be notified of our blasting activities daily. If you are one of those that are not being notified, we can text and email people and we can tell you or ring you if you have a landline and let you know daily of blasting – where, what time and what area in the mine. If anybody wants that to happen, please see me before you leave and we will add you to the list. We also have blast notification devices like the spaceship-looking thing that you get at the RSA when your meal's ready. Ours play music, Elvis or Hawaii 50 or Beach Boys. When we first started Correnso, people were frightened when the blasts went off so this takes away the startle factor. The music plays and then within a minute there is the blast.

Complaints & Concerns – July – December 2023

Martha	Type	Number	Period
	Staff Behaviour	1	July
	Total	1	
Project Martha	Type	Number	Period
	Vibration	2	July - December
	Felt & Heard	1	July
	Noise	1	September
	Communication	1	July
	Total	5	
Proposed Projects	Type	Number	Period
	Noise	5	August - December
	Total	5	
Concerns	Type	Number	Period
	Property	1	September
	Communication	1	July
	AEP	1	July
	Vibration	1	November
	Total	4	

INNOVATION PERFORMANCE GROWTH

OCEANA GOLD

Complaints & concerns

Donna said: This is a report on the July to December 2023 complaints and concerns that Oceana has received from residents. You can see from the table that Martha, with the pit not working, we don't get complaints about the pit anymore. The one complaint that we did get was about staff behaviour because their property was on the north side of the pit and rubbish got blown over during a short-term stay and the neighbour did not like it. We picked the rubbish up. For Project Martha we had 2 vibration complaints, 1 "felt and heard" which is when

you hear the blast and feel the vibration, 1 noise complaint and 1 communications complaint about one of the communications articles we published.

We've added new category called Proposed Projects and that is mainly because we got 5 complaints about helicopter activity flying stuff into our Waihi North Project in the WKP area.

Then we have a "Concerns" category which is, say, a phone call from a resident who does not want to make a "complaint" but they are concerned about something. So, we report that to council as well.

Over the last 3 years: in 2021 we had 80 complaints over the whole year, in 2022 we had 57 complaints and 15 concerns and last year January to December we had 41 complaints and 12 concerns. So, it is decreasing and this is the lowest amount of complaints and concerns we have received since (our recoding) time began.

Carolyn said: If people felt and heard it, are they meant to let you know? Do they know they are meant to call you?

Donna said: Only if it is worrying them.

Mike said: The complaints registered in the Proposed Projects section – are they all from one property?

Donna said: One wasn't, one was from Powerco checking their lines but I still listed it.

Erich said: What I cannot understand is why fly a helicopter over the town in the first place and not around it?

Donna said: Powerco have been checking power lines and when the helicopter was flying low it was actually Powerco. When we got these complaints about our helicopter, we were able to log into the helicopter pilot's log sheet with the flight path and see how high they are flying. They are actually flying at 1000ft even though the lowest you can is a lot lower at 500ft so we are actually flying 500ft higher than the allowable height, solely because we don't want to annoy people.

Erich said: Sometimes I hear it.

Donna said: I do too.

Andrew said: I hear it all the time. On 21 February the chopper flew over my house at 6.44am. So, I would like to make a complaint with those dates. It was unnecessary for a chopper to be flying over Waihi, especially over residential property and especially when Oceana owns 500 acres. Any considerate organisation should be using roads to transport equipment and personnel, not using an aircraft.

Donna said: Andrew, talk to me after the meeting and I will take the details of your complaint.

Andrew said: I understand flying over the bush, but there is no need for the helicopter to fly over private property when there are roads available.

Donna said: So, are you suggesting that we transport stuff by road to Willows Road and the helicopter picks it up from there? I will take that to the team and come back to Andrew on the answer.

Post-meeting answer:

We have had a number of discussions with Andrew about the helicopter since the meeting and these discussions are ongoing. Management have been made aware of Andrew's suggestion to fly from Willows Road.

Glenis said: At 7.49pm on Saturday 9 March (2024), we had one heck of a blast and that shifted the house sideways.

Donna said: That isn't in these results because this slide shows complaints and concerns from July to December 2023. We report these 6-monthly to HDC and WRC. So, that blast and the calls I got about that will be reported in the January to June 2024 complaints and concerns report.

Glenis said: What caused it?

Donna said: We can find out and we will put that in the minutes?

Post-meeting answer:

The highest vibration monitor reading was Secondary SW 2.46mm/s which is located in Roycroft Street. The blast was 425m below the surface and was 370m from the pit to Roycroft Street monitor, and 400m from the Baker Street property. A normal blast occurred and was within compliance.

The Waihi North Project Update

- We are continuing to progress the technical studies supporting our application for the Waihi North Project. A full consent documentation package was provided to both Hauraki District and Waikato Regional councils for their consideration and review in June 2022. This application was accepted as complete, and a Request for Information was subsequently received.
- In complex applications like this, once the application has been formally accepted, regulators often request additional information in specific areas once their technical experts have had time to review the application. This includes questions around the potential noise, vibration, geochemistry, ecological assessments, and groundwater impacts of the project.
- While the consent process continues, we have prepared a series of summary Fact Sheets about the project. Members of the public are also invited to call in to the Company's Project Office at 86 Seddon Street in Waihi.

FURTHER INFORMATION ON THE WAIHI NORTH PROJECT MAY BE FOUND ONLINE AT www.waihinorth.info

INNOVATION PERFORMANCE GROWTH

OCEANA GOLD

Kyle said: Although the purpose of these meetings is to provide an update on our operations, we always do a couple of slides on where we are going with our proposed projects – the Waihi North Project which is the Gladstone Open Pit, the third TSF and tunnel up to WKP from some surface infrastructure at Willows Road. We announced it back in 2021 and we applied for a resource consent in June 2022. They have accepted that but sent us requests for further information (RFI's) and we have been working through responding to those requests since that time.

The full application and supporting technical studies are available on our website <https://oceanagold.com/interactive-documents/> and the RFI's we received are on Hauraki District Council (HDC) website <https://www.hauraki-dc.govt.nz/community/mining-in-hauraki/new-mining-proposals> and we are still working on getting a response to those RFI's to council.

In the meantime, we are continuing working with the existing consultation that we have been doing and we have got WSP coming back in a couple of weeks for a "meet the expert" session. Similarly, we've had a noise expert, a tailings expert and an air quality expert all attend at the Project Information Office (86 Seddon Street, Waihi). If the times don't suit, then we can book in alternative times for them to come and see us.

Tim said: How do people know when, the date/time, the sessions are coming?

Kyle said: Josh is not here tonight but he has published it in the newspaper, our Facebook page, it's shown on our website and Josh normally posts it in the community grapevine page as well.

Proposed Change to the Martha Mineral Zone Update

The proposed expansion of the Martha Pit, as part of the Martha Open Pit Project, would first require a change to the District Plan to increase the boundary to include all the land parcels necessary to support the expansion (this is inclusive of areas required for rehabilitation). No privately owned land will be rezoned as part of the plan change application.

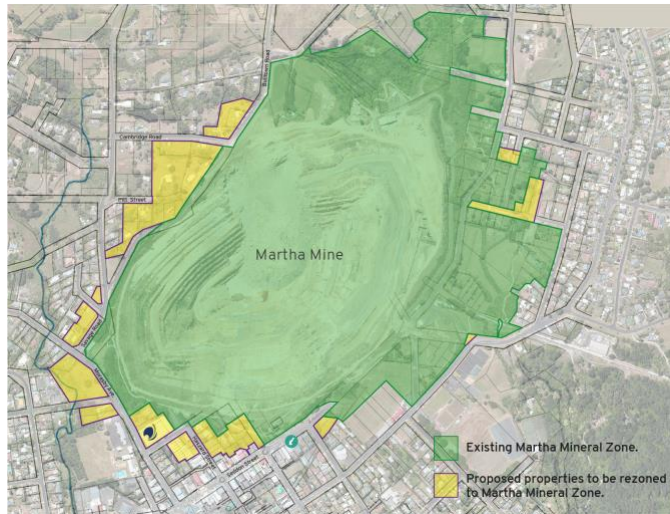
In July 2021, OceanaGold shared details of a proposed change to the Martha Mineral Zone. The Hauraki District Council (HDC) has now announced the public notification phase of the proposed change.

A CHANGE TO THE MARTHA MINERAL ZONE DOESN'T MEAN WE CAN MINE

Any mining activity is controlled by the Resource Management Act and resource consents would still need to be sought should the plan change be approved.

Now that HDC have publicly notified the plan change application, anyone (including members of the public, businesses, community groups, and councils) can make a submission on the plan change application. The submission period will run from the 15th of February 2024 until the 28th of March 2024.

IF YOU HAVE ANY QUESTIONS ABOUT THE PRIVATE PLAN CHANGE SUBMISSIONS PROCESS, IN THE FIRST INSTANCE PLEASE CONTACT HDC via www.hauraki-dc.govt.nz/council/plans-strategies/hauraki-district-plan/dp-changes-6



INNOVATION PERFORMANCE GROWTH

OCEANA GOLD

We have talked a fair bit already about what the Martha Open Pit project may or may not entail but the first step is for us to apply to WDC to change a line on the map. The Martha Mineral Zone (MMZ) is defined within the District Plan. We started talking about that back in 2021, lodged an application in 2022 and in a similar process RFI's were received that we responded to. Then, as of the middle of February 2024, HDC has publicly notified Oceana's application and anyone who wishes to can make a submission in that until 28 March 2024. There is more information on how to submit and more about the details on the HDC website <https://www.hauraki-dc.govt.nz/council/plans-strategies/hauraki-district-plan/dp-changes-6>. If you would like to talk with us further then come and visit us at the shop or if you would like us to we can visit you at your house.

Kathy said: My question (before) is that the outline where you had coloured in red doesn't involve my property and yet it's still being possibly rezoned and I want to know why if you're not going to mine on it.

Leigh said: The property is not being rezoned. The plan change is to rezone those areas shown in yellow (see the slide above). All of it is owned by Oceana Gold. The town centre, residential and low density residential don't allow for surface mining – it is a prohibited activity. The company have applied to council to change the zone and with the application material they provided some information "Hypothetical Mock 5", which is a potential pit which could be conceivable. From that they put some information in terms of what you could expect in terms of vibration. So, we use that to identify a line where, if there was surface mining, there could be some effects from it. We have used a 2mm/s line which is vibration that is "slightly perceptible". So, you might feel vibrations. I need to emphasise this is not something that is being proposed. It is saying that *if* there was a pit like in the plans, you could have potentially have vibration at 2mm/s, increasing the closer you get to the pit. Kathy, that is the reason why you got a letter. At the moment, you wouldn't expect that sort of activity in your area because it's prohibited. It is a line that's changing but it's also potential for an activity that still has to go through a resource consent process. If the RMA stays the same it would be notified to people who are potentially affected (like Kathy) and that is why we had to send a letter to who we thought could be affected.

Kathy said: When you rezone something for the Martha Pit it potentially affects the value of my property. I bought because it is not on top of the mine, so the letter is quite concerning for me. When I bought my property one of the first things I looked at was the mine. If you are going to rezone it's going to affect me if I decide to sell, the sale value.

Tim said: Is council inviting Kathy to write to council and say, "I have a worry".

Leigh said: Yes, that's the point of submissions. The MMZ doesn't just allow for mining, it allows for rehabilitation and all sorts of things. There would be a consent involved but it would make it a more customised mining surface, not actually mining.

Jane said: If they do dig a bigger hole, it will affect values.

Kathy said: Exactly.

Leigh said: We have to wait and see. There is no resource consent yet.

Tim said: Leigh is saying you get “two bites at the cherry”. You can submit on the re-zone application and then if that is granted you get to submit and oppose any resource consent application.

Carolyn said: Obviously you think you are going to get the consent as you are buying properties in the yellow zone.

Kyle (and others) said: No, Oceana already owns them.

Carolyn said: See the roads at the top of Hazard Street and down to the school – will those roads stay there, or will we lose them?

Kyle said: We don't know. The proposal in 2020, which was our understanding at the time, is the roads would be closed. The back half of the Pye building would disappear (keeping the façade), the pumphouse would need to be moved but we haven't applied for a resource consent yet and whether all of that would happen yet needs to be determined.

Katherine said: Could I say I don't approve of the MMZ expansion because I don't know what is going to happen after the expansion has been approved?

Kyle said: That would be a question for the planner in the room.

Katherine said: Could you change the expansion of the mineral zone so it didn't impact any homes?

Kyle said: I would imagine no. What we have put forward is based on our understanding of where the resource is, the properties we own and ensuring that we can have an appropriate pit slope so we can maintain the stability of the pit. This is us saying what is reasonable to achieve – a bigger mine one day in the future.

Brian said: I think if the proposed change to MMZ goes ahead it will give any applications by the mine less loopholes to jump through and less opportunity for people to have their say. Lowering where MMZ is to be could affect things further down the track, say, if there are 10 grounds for opposition but if the MMZ goes through there might be 4 or 5.

Kyle said: I would say it goes the other way. We can't apply for a resource consent to mine in these areas because it is prohibited. There are other provisions in the plan to ensure that any future resource consent considers any effects on the area, the noise etc, lots of things that are focussed on protecting the community not just about changing the mine. I would say the threshold goes up not down.

Brian said: I also received one of those letters (like Kathy). If you look at the map, which is very small, that area shows us not affected. I got in touch with Leigh and asked if you have provided us with this as a courtesy or are we affected. Leigh's response was that they had looked at the 2mm/s contour and considered that the house that I am in could be affected, it is up to me to look at that further. I am concerned that this is misleading information saying I could be affected.

Tim said: What is the purpose of notification?

Leigh said: We have to publicly notify a plan change anyway. We have to identify who we think could be affected, we have to draw a line somewhere and send our letter to those people's houses, so we used the 2mm/s based on the conceptual pit. If there was confusion around that then I apologise but we let people know something is changed and there could be some surface activity not provided for and we thought people would be better off knowing than not.

Brian said: Well, put a circle around it, tell me I am affected. At the moment I am on the outside of that line.

Kathy said: That was what was confusing about the letter, saying we may be affected.

Leigh said: The 2mm/s line that we have used is the worst-case scenario because it's based on when any blasting work is being done at the surface. The 2mm/s vibration line is much broader than the noise.

Brian said: So, as a worst-case scenario we could be affected and you have put us in the “we might be affected” area when we are outside of it. So, put us in, we are outside of it which is why I sent you an email saying it looks like I am outside of the area, why have I been included?

Leigh said: You are outside of the zone area, you are not being re-zoned.

Tim said: Are you inside the 2mm/s line?

Brian said: Yes, according to the letter that Leigh sent us but according to the information that says I am affected, I am not. It is not clear anyway. I am out of the zone.

Glenis said: The re-contouring of the roads, how will that process happen? What say will the public have about that? Will they be consulted as that could have a huge effect on how people get around CBD? Then the council has money set aside in the long term plan for upgrading part of the main street. Which will come first – the upgrade of mining or the street for Waihi that ratepayers will pay for?

Kyle said: The first decision would be, “Is it something we want to pursue?” That is stopping the road and then working through the approvals process to do that. Firstly, we have to decide if it is something we want to do and we have not landed there yet.

Glenis said: I thought you had?

Kyle said: In 2020 we announced that this is what Martha Open Pit might look like as part of Project Quatro. We pulled Quatro apart. The information that was available when we were looking at Project Quatro remains publicly available, we are being transparent about that. The Oceana Gold effort is focussed on the Waihi North project. We started a long time ago but the MMZ application was lodged in 2022. It has taken us a long time to get to this step and we are also wanting to hear what the feedback is to this proposal.

Tim said: Is 28 March the closure date for submissions on the MMZ?

Glenis said: I think it is important that people know the District Plan is “the one ring that rules them all” (Lord of the Rings analogy). Whatever is changed in the District Plan allows for those types of activities to happen. For example, if the District Plan says that hazardous substances can be stored next to your house then there is nothing you can do about it.

Leigh said: No, the plan change is still requiring a full discretionary activity so an activity can be refused, or approved with conditions. But look at the picture – it’s in the middle of the town, it is not like outback Australia. We actually look at what the environment is and where people are.

Katherine said: Can WKP go ahead if you don’t get this?

Kyle said: Yes, subject to all of the other approvals we need for WKP. But WKP is not contingent on getting this, they are separate and distinct.

Dave said: How many dwellings are we losing?

Kyle said: There are 47 properties proposed to be rezoned and 24 have dwellings on them.

Dave said: So, 24 houses that are now paying rates will disappear?

Kyle said: No, 24 properties won’t disappear should this get approved. Should we seek a resource consent, and it is granted, then it potentially engulfs those properties.

Dave said: They would be moved so if they are going ahead we will lose 24 rate-paying homes.

Kyle said: Potentially, if the pit went that far there could be 24 properties.

Dave said: So, how many houses has Waihi lost through mining in the last 40 years? Our rates will go up if we lose those houses.

Kyle said: I would encourage you to go onto the HDC website or come to the Information Office. There is a land supply assessment done for this application and the answers to those sorts of questions are there.

Dave said: You don't care about your host community. Your survey says that 18% of people don't like mining. That is 1 in 5 but you don't give a toss.

General questions and comments

TSF details

Carolyn said: I found it helpful when I could see the layers of how far the mining went underground. Can you do one so I can see where the level is of the town, where the beach is and then how high the TSF will be?

Kyle said: I am sure we can find that for you. We will put on our website once it's done.

Lee said: That height of the dam of 153, is that the new dam?

Kyle said: It is 53. It is the proposed height of the new TSF3.

Lee said: What's the current height (of the existing TSF)?

Mark said: It is 175. Existing TSFs are higher than the proposed TSF3.

Brian said: But those can have add-ons can't they?

Mark said: TSF1(a) has got permission to go to 182.

Elections

Brian said: Does Oceana Gold have any input financially in the elections or do you lobby in Wellington?

Kit said: I work for corporate now (so I have the direct knowledge to answer this). We do nothing at all, we make no financial contribution. Everybody lobbies.

Waihi Community Forum

Anne-Marie Spicer said: It is good to see new faces. I would love to see these meetings be more constructive. There has been some dominating and I find that a bit jarring and could be off-putting for the new members. I would love to see some more positive contributions.

Bavesh Ranchod said: I heard the comments from Glenis about "Streetscape" and the long-term plan and there is money allocated for that. The Waihi Ward isn't rushing in to do that in any great hurry. The proposal wouldn't affect the plan anyway, it would stop basically where the Stirling Pub is. It will go up to Stirling and along Rosemont and down to Work & Income end of School Lane.

Glenis said: Would it happen before or after the mining?

Bavesh said: Nothing has been solidly planned at the moment. We certainly wouldn't do anything at the upper end of Seddon Street until this (zoning etc) is finalised. At the moment we're in a holding pattern in that area.

Anne-Marie said: We are looking at replacing the street lighting and the flagpoles.

Bavesh said: That is for a whole lot of reasons, not just because of the mining. We are considering whether in these economic times it is the right thing to do to be spending money on this right now. We are looking at what we can do more cost effectively. We are not rushing into doing stuff that will then change should this action progress.

As far as the Forum is concerned, if you want to have a say or are interested, please make submissions. These come back through the process, back to the commissioners who will take it on board so if you're interested I'd encourage you to make a submission.

Mike said: Anne-Marie, you have been in it the longest. Could you give a history of the purpose of the Waihi Community Forum?

Anne-Marie said: The Forum started in about 2012. It has five community members, two from council and two from Oceana Gold (or the consent holder at the time). It now looks after the whole Waihi area and is there as a support for residents. It has some consent conditions from Correnso that it needs to work with around

property purchases, not that it has done that for a while. It has a Streets Ahead scheme which is all about supporting the area where mining takes place. That is a key focus for the Forum at the moment with a couple of key projects we have got going – the benches around the pit rim and the outdoor recreation hub.

Katherine said: Thank you for changing the terminology to “public” so all members know they could come and (Kyle) congratulations on your baby.

Conclusion

Tim said: Thanks everyone. I will put my neck on the line and say minutes in two weeks’ time. Thank you for coming to the meeting, it is your questions and your input that makes the process successful.

The meeting finished at 8pm.

**Next meeting: Thursday 12 September 2024 at 5.30pm
(Combined CEPA/SUPA and Martha meeting)**

Attendance register:	
Dee Stevenson	Katherine Lucas
Lee Anderson	Els de Man
Rudy de Man	Leigh Robcke
Mike Hayden	Bhavesh Ranchod
Andrew Wharry	Peter Lush
Colin Walker	Carol Walker
Jane Murray	Dave Wellington
Anne-Marie Spicer	Carolyn McKenna
Helga Schmidt	Erich Schmidt
Kathy Cooper	Lyn Randell
Neil Andrews	Glenis Gentil
Brian Gentil	Dan Michael
Kyle Welton	Kit Wilson
Donna Fisher	Jeannine Wiki
Mark Burrows	Sam Mortensen
Patrick Slagter	Tim Clarke
Louise Fielden	
Apologies:	
Josh Smith	Justin Johns

Tailings Impoundments at Waihi

Tailings are the finely ground rock left over after the gold and silver have been extracted. A Tailings Storage Facility (TSF) is the category name for any structure built for the purposes of storing tailings from the gold and silver extraction process. There are several different types of TSF globally, with varying types of construction.

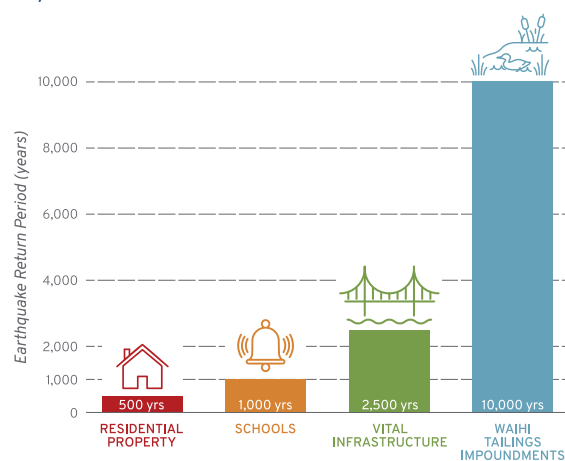
At Waihi we currently operate and manage two tailings impoundments: TSF 1A and TSF 2. TSF 1A is currently in operation, and TSF 2 stopped receiving tailings in 2005. All of our TSFs are built and operated in accordance with internationally recognised standards. As part of the Waihi North Project and to cater for the extension of mining life, OceanaGold Waihi is proposing to construct a new tailings storage facility (TSF 3) immediately east of the current facilities.

EARTHQUAKE RISK AND DESIGN

Due to the geological setting of New Zealand, one of the greatest risks to a TSF (or any structure) is from an earthquake occurring. While Waihi is an area of historically low seismic activity, the Waihi TSFs are still designed to withstand significant seismic events, including earthquake ground motions with a 1 in 10,000-year 'return period' (or a 0.01% probability of happening in a given year). In 2007 the Institute of Geological and Nuclear Sciences (GNS) provided updated estimates of 10,000-year ground motions for design of the tailings impoundments at Waihi.

The embankments have been designed to resist the effects of earthquake shaking from what is known as the Maximum Credible Earthquake (MCE), based on a seismic hazard study of the site in accordance with international guidelines. The MCE has been conservatively assessed to be a magnitude MW 7 earthquake at a distance of nine kilometres from the site. To put this in context, standard buildings, such as residential houses, are designed for 1 in 500-year events. Structures that can accommodate large numbers of people, such as schools, are designed for 1 in 1,000-year events. Structures with special emergency and post-disaster functions (e.g., hospitals, fire, and police stations) and vital infrastructure (e.g., state highway bridges) are designed for 1 in 2,500-year events.

CONSTRUCTION
STANDARDS FOR
EARTHQUAKE
'RETURN PERIODS'



TSFs AND CYANIDE

Cyanide is used in the processing of gold and silver ores at Waihi. The first cyanidation plant in the world was actually established locally, in 1889 at the Crown Mine in Karangahake. The process was a huge success, improving the recovery of gold from ore from around 40-50% at the time to 85-95%.

Given its past history, it is no wonder that there are a number of concerns relating to the toxicity of cyanide, however it is important to distinguish facts from myths and misconceptions. While cyanide can be deadly, it also occurs naturally, is not toxic in all forms or all concentrations, does not persist in the environment, and is not cumulative, nor is it a heavy metal or radioactive.

The particular form of cyanide, together with the concentration, is what determines whether it has the potential to be toxic within the environment.

From an environmental perspective, the 'toxicologically significant' or 'ecologically important' form of cyanide is what's known as weak acid dissociable (WAD) cyanide.

Only low residual concentrations of cyanide are found in the decant pond at our tailings storage areas, with concentrations of WAD cyanide averaging around 4 grams per cubic metre. For comparison, this is well within the level of 50 grams per cubic metre which is the upper level considered safe for migratory birds and waterfowl.



CONCLUSION

Tailings and their storage are a complex subject, covering multiple areas across engineering and chemistry disciplines, with differing approaches around the world. As a result, TSFs are one of the most talked about aspects of gold mining operations, but also one of the most prone to myth or misunderstanding. Even this update can only briefly cover some of the aspects of tailings impoundments at Waihi. In a future update we'll cover other TSF topics, including how water and rainfall interacts with TSFs and how TSFs are rehabilitated at the end of their operational life.

For even more information on tailings, the storage and monitoring processes, or the references used, visit www.waihigold.co.nz/about-mining. If you'd like to learn more about the proposed TSF3 or other aspects of the Waihi North Project, visit www.waihinorth.info

Tailings Storage Facility 1A

IF YOU HAVE ANY QUESTIONS OR CONCERNS, PLEASE CONTACT US.

Community Engagement Line: 0800 924 444 | Project Information Office: 86 Seddon St., Waihi.
Email us via our website: www.waihigold.co.nz

**NOTE: WE ARE NOT CURRENTLY
BLASTING IN THE MARTHA OPEN PIT.
CHANGES TO THIS WILL BE NOTIFIED.**